

KANSAS CORPORATION COMMISSION
OIL & GAS CONSERVATION DIVISION

TEMPORARY ABANDONMENT WELL APPLICATION

OPERATOR: License# _____
Name: _____
Address 1: _____
Address 2: _____
City: _____ State: _____ Zip: _____ + _____
Contact Person: _____
Phone:(_____) _____
Contact Person Email: _____
Field Contact Person: _____
Field Contact Person Phone: (_____) _____

API No. 15- _____
Spot Description: _____
- - - - - Sec. _____ Twp. _____ S. R. _____ E W
_____ feet from N / S Line of Section
_____ feet from E / W Line of Section
GPS Location: Lat: _____, Long: _____
Datum: NAD27 NAD83 WGS84
County: _____ Elevation: _____ GL KB
Lease Name: _____ Well #: _____
Well Type: (check one) Oil Gas OG WSW Other: _____
 SWD Permit #: _____ ENHR Permit #: _____
 Gas Storage Permit #: _____
Spud Date: _____ Date Shut-In: _____

Table with 7 columns: Conductor, Surface, Production, Intermediate, Liner, Tubing. Rows include Size, Setting Depth, Amount of Cement, Top of Cement, Bottom of Cement.

Casing Fluid Level from Surface: _____ How Determined? _____ Date: _____
Casing Squeeze(s): _____ to _____ w / _____ sacks of cement, _____ to _____ w / _____ sacks of cement. Date: _____
Do you have a valid Oil & Gas Lease? Yes No
Depth and Type: Junk in Hole at _____ Tools in Hole at _____ Casing Leaks: Yes No Depth of casing leak(s): _____
Type Completion: ALT. I ALT. II Depth of: DV Tool: _____ w / _____ sacks of cement Port Collar: _____ w / _____ sack of cement
Packer Type: _____ Size: _____ Inch Set at: _____ Feet
Total Depth: _____ Plug Back Depth: _____ Plug Back Method: _____

Geological Date:

Table with 2 columns: Formation Name, Completion Information. Rows 1 and 2 for formation details.

UNDER PENALTY OF PERJURY I HEREBY ATTEST THAT THE INFORMATION CONTAINED HEREIN IS TRUE AND CORRECT TO THE BEST OF MY KNOWLEDGE

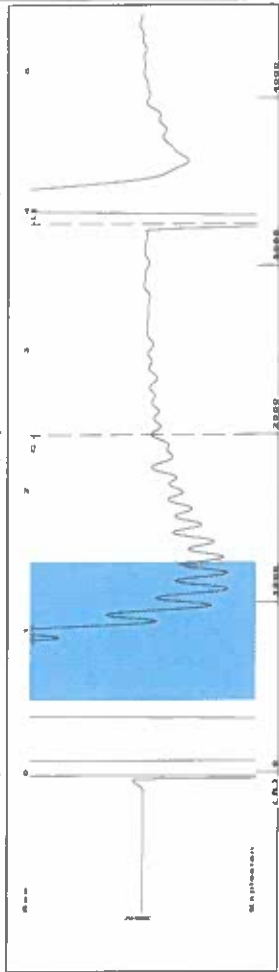
Submitted Electronically

Form with fields: Do NOT Write in This Space - KCC USE ONLY, Date Tested, Results, Date Plugged, Date Repaired, Date Put Back in Service, Review Completed by, Comments, TA Approved (Yes/No), Date.

Mail to the Appropriate KCC Conservation Office:

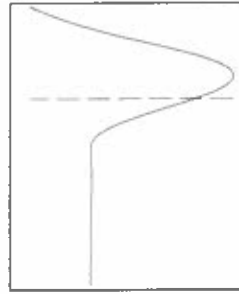
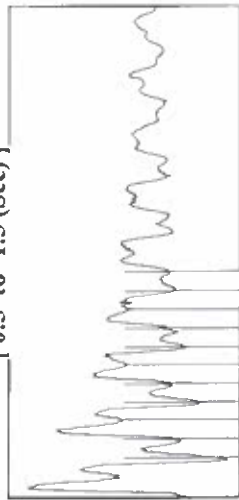
Table with 2 columns: Office Address, Phone Number. Rows for District Offices #1, #2, #3, and #4.

Group: SUBLETTE Well: Hickman B-2 (acquired on: 07/20/21 14:40:43)



Filter Type High Pass
 Manual Acoustic Veloc 1681.7 ft/s
 Automatic Collar Count Yes
 Manual JTS/sec 26.5252
 Time 3.901 sec
 Joints 102.465 Jts
 Depth 3248.15 ft

[0.5 to 1.5 (Sec)]

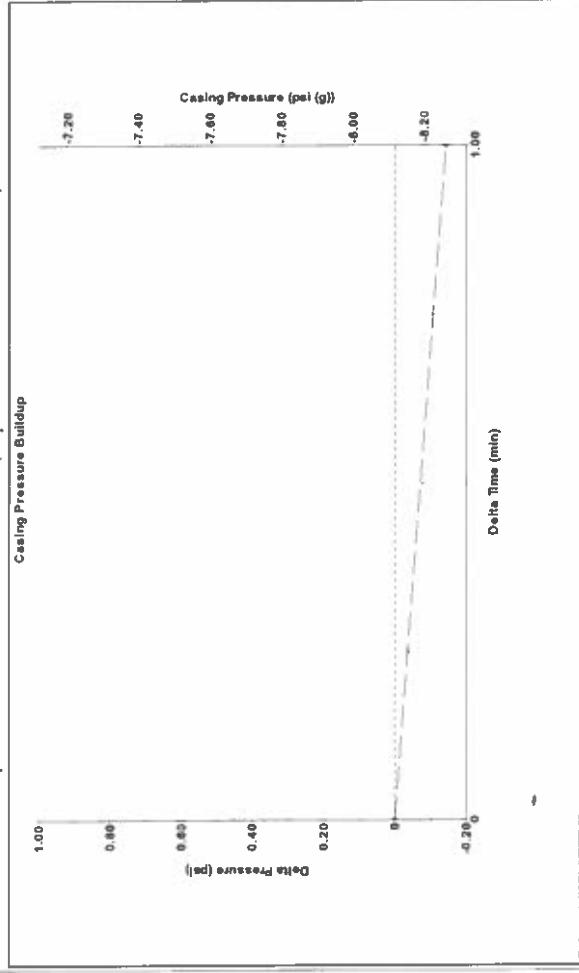


Analysis Method: Automatic

Group: SUBLETTE Well: Hickman B-2 (acquired on: 07/20/21 14:40:43)

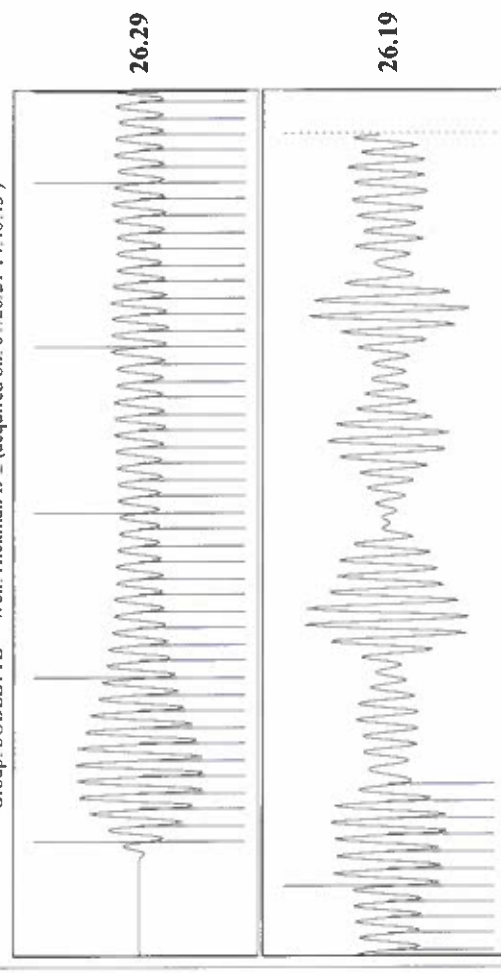
Production	Potential	Casing Pressure	Producing
Current	-*- BBL/D	-8.1 psi (g)	Annular
Oil	-*- BBL/D	Casing Pressure Buildup	Gas Flow
Water	-*- Mscf/D	-0.142 psi	0 Mscf/D
Gas	-*- Mscf/D	1.00 min	% Liquid
IPR Method	Vogel	Gas/Liquid Interface Pressure	100 %
PBHP/SBHP	-*-	-7.7 psi (g)	
Production Efficiency	0.0		
Oil	40 deg.API	Liquid Level Depth	Pump Intake
Water	1.05 Sp.Gr.H2O	3248.15 ft	320.0 psi (g)
Gas	0.55 Sp.Gr.AIR	Pump Intake Depth	Producing BHP
Acoustic Velocity	1665.29 ft/s	4221.00 ft	836.0 psi (g)
		Formation Depth	Static BHP
		5400.00 ft	-*- psi (g)
Formation Submergence			
Total Gaseous Liquid Column HT (TVD)	973 ft		
Equivalent Gas Free Liquid HT (TVD)	973 ft		
7/20/21			

Group: SUBLETTE Well: Hickman B-2 (acquired on: 07/20/21 14:40:43)



Change in Pressure -0.14 psi
 Change in Time 1.00 min
 Range PT14679
 0 - ? psi

Group: SUBLETTE Well: Hickman B-2 (acquired on: 07/20/21 14:40:43)



Acoustic Velocity 1665.29 ft/s
 Joints Per Second 26.2664 Jts/sec
 Depth to liquid level 3248.15 ft
 Automatic Collar Count Yes
 Joints counted 56
 Joints to liquid level 102.465
 Filter Width 24.5252
 Time to 1st Collar 2.396

Conservation Division
District Office No. 1
210 E. Frontview, Suite A
Dodge City, KS 67801



Phone: 620-682-7933
<http://kcc.ks.gov/>

Andrew J. French, Chairperson
Dwight D. Keen, Commissioner
Susan K. Duffy, Commissioner

Laura Kelly, Governor

July 22, 2021

Katherine McClurkan
Merit Energy Company, LLC
13727 Noel Road, Suite 1200
Dallas, TX 75240

Re: Temporary Abandonment
API 15-081-39028-00-01
Hickman B 2
SE/4 Sec.28-30S-33W
Haskell County, Kansas

Dear Katherine McClurkan:

"Your temporary abandonment (TA) application for the well listed above has been approved. In accordance with K.A.R. 82-3-111 the TA status of this well will expire 07/22/2022.

- * If you return this well to service or plug it, please notify the District Office.
- * If you sell this well you are required to file a Transfer of Operator form, T-1.
- * If the well will remain temporarily abandoned, you must submit a new TA application, CP-111, before 07/22/2022.

You may contact me at the number above if you have questions.

Very truly yours,

Michael Maier"