

KANSAS CORPORATION COMMISSION
OIL & GAS CONSERVATION DIVISION

TEMPORARY ABANDONMENT WELL APPLICATION

OPERATOR: License#
Name:
Address 1:
Address 2:
City: State: Zip:
Contact Person:
Phone:
Contact Person Email:
Field Contact Person:
Field Contact Person Phone:

API No. 15-
Spot Description:
Sec. Twp. S. R.
feet from N / S Line of Section
feet from E / W Line of Section
GPS Location: Lat: , Long:
Datum: NAD27 NAD83 WGS84
County: Elevation: GL KB
Lease Name: Well #:
Well Type: Oil Gas OG WSW Other:
SWD Permit #: ENHR Permit #:
Gas Storage Permit #:
Spud Date: Date Shut-In:

Table with 7 columns: Conductor, Surface, Production, Intermediate, Liner, Tubing. Rows include Size, Setting Depth, Amount of Cement, Top of Cement, Bottom of Cement.

Casing Fluid Level from Surface: How Determined? Date:
Casing Squeeze(s): to w / sacks of cement, to w / sacks of cement. Date:
Do you have a valid Oil & Gas Lease? Yes No
Depth and Type: Junk in Hole at Tools in Hole at Casing Leaks: Yes No Depth of casing leak(s):
Type Completion: ALT. I ALT. II Depth of: DV Tool: w / sacks of cement Port Collar: w / sack of cement
Packer Type: Size: Inch Set at: Feet
Total Depth: Plug Back Depth: Plug Back Method:

Geological Date:

Table with 4 columns: Formation Name, Formation Top, Formation Base, Completion Information. Rows 1 and 2.

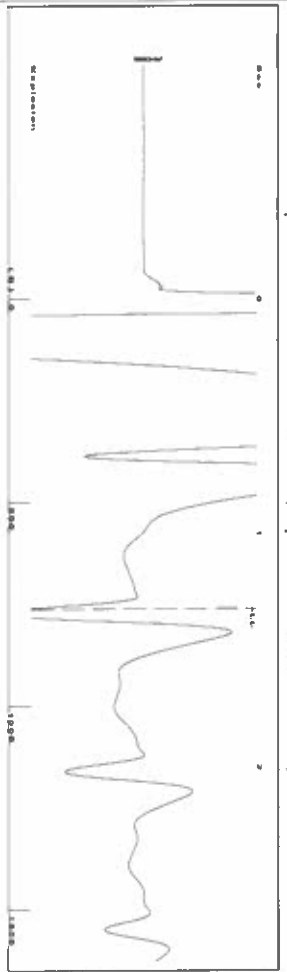
UNDER PENALTY OF PERJURY I HEREBY ATTEST THAT THE INFORMATION CONTAINED HEREIN IS TRUE AND CORRECT TO THE BEST OF MY KNOWLEDGE

Submitted Electronically

Do NOT Write in This Space - KCC USE ONLY
Date Tested: Results: Date Plugged: Date Repaired: Date Put Back in Service:
Review Completed by: Comments:
TA Approved: Yes Denied Date:

Mail to the Appropriate KCC Conservation Office:

Table with 3 columns: District Office, Address, Phone. Rows for District Office #1, #2, #3, #4.



Time 1.326 sec
 Joints 24.0521 Jts
 Depth 762.45 ft

Liquid level calculated with
 user supplied Acoustic Velocity
 Acoustic Velocity 1150 ft/s

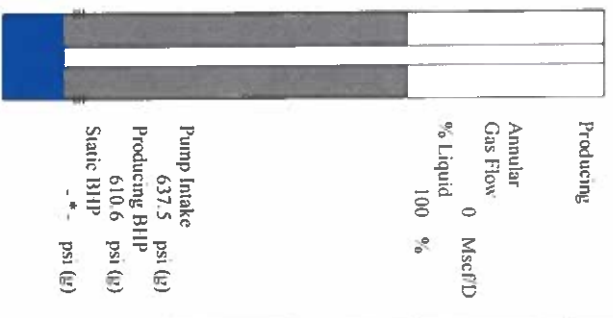


Analysis Method: Acoustic Velocity

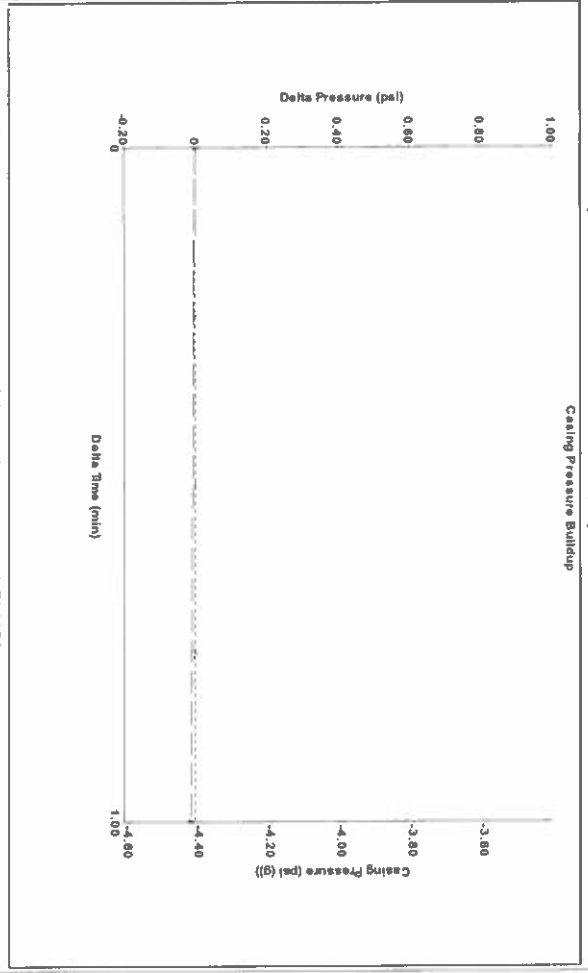
Group: SUBLETTE Well: McCune 1 (acquired on: 07/21/21 10:01:28)

Production	Potential	Casing Pressure	Producing
Oil -*-	-*- BBL/D	-4.4 psi (g)	Annular
Water -*-	-*- BBL/D	-0.013 psi	Gas Flow
Gas -*-	-*- Mscf/D	1.00 min	% Liquid
IPR Method	Vogel	Gas/Liquid Interface Pressure	0 Mscf/D
PBHIP/SBHP	-*-	-4.2 psi (g)	% Liquid
Production Efficiency	0.0	Liquid Level Depth	100 %
Oil 40 deg API		762.45 ft	
Water 1.05 Sp.Gr.H2O		Pump Intake Depth	
Gas 0.85 Sp.Gr.AIR		2674.00 ft	
Acoustic Velocity	1150 ft/s	Formation Depth	
		2590.00 ft	

Formation Submergence
 Total Gaseous Liquid Column HIT (TVD) 1912 ft
 Equivalent Gas Free Liquid HIT (TVD) 1912 ft
 7/21/21



Pump Intake 637.5 psi (g)
 Producing BHIP 610.6 psi (g)
 Static BHIP - psi (g)



Change in Pressure -0.01 psi
 Change in Time 1.00 min
 PT14679 Range
 0 - ? psi

Group: SUBLETTE Well: McCune 1 (acquired on: 07/21/21 10:01:28)

Entered Acoustic Velocity for Liquid Level depth determination

Conservation Division
District Office No. 1
210 E. Frontview, Suite A
Dodge City, KS 67801



Phone: 620-682-7933
<http://kcc.ks.gov/>

Andrew J. French, Chairperson
Dwight D. Keen, Commissioner
Susan K. Duffy, Commissioner

Laura Kelly, Governor

July 22, 2021

Katherine McClurkan
Merit Energy Company, LLC
13727 Noel Road, Suite 1200
Dallas, TX 75240-7362

Re: Temporary Abandonment
API 15-175-00435-00-00
McCune 1
NW/4 Sec.09-31S-32W
Seward County, Kansas

Dear Katherine McClurkan:

"Your temporary abandonment (TA) application for the well listed above has been approved. In accordance with K.A.R. 82-3-111 the TA status of this well will expire 07/22/2022.

- * If you return this well to service or plug it, please notify the District Office.
- * If you sell this well you are required to file a Transfer of Operator form, T-1.
- * If the well will remain temporarily abandoned, you must submit a new TA application, CP-111, before 07/22/2022.

You may contact me at the number above if you have questions.

Very truly yours,

Michael Maier"