

KANSAS CORPORATION COMMISSION
OIL & GAS CONSERVATION DIVISION

TEMPORARY ABANDONMENT WELL APPLICATION

OPERATOR: License#
Name:
Address 1:
Address 2:
City: State: Zip:
Contact Person:
Phone:
Contact Person Email:
Field Contact Person:
Field Contact Person Phone:

API No. 15-
Spot Description:
Sec. Twp. S. R.
feet from N / S Line of Section
feet from E / W Line of Section
GPS Location: Lat: , Long:
Datum: NAD27 NAD83 WGS84
County: Elevation: GL KB
Lease Name: Well #:
Well Type: Oil Gas OG WSW Other:
SWD Permit #: ENHR Permit #:
Gas Storage Permit #:
Spud Date: Date Shut-In:

Table with 7 columns: Conductor, Surface, Production, Intermediate, Liner, Tubing. Rows include Size, Setting Depth, Amount of Cement, Top of Cement, Bottom of Cement.

Casing Fluid Level from Surface: How Determined? Date:
Casing Squeeze(s): to w / sacks of cement, to w / sacks of cement. Date:
Do you have a valid Oil & Gas Lease? Yes No
Depth and Type: Junk in Hole at Tools in Hole at Casing Leaks: Yes No Depth of casing leak(s):
Type Completion: ALT. I ALT. II Depth of: DV Tool: w / sacks of cement Port Collar: w / sack of cement
Packer Type: Size: Inch Set at: Feet
Total Depth: Plug Back Depth: Plug Back Method:

Geological Date:

Table with 4 columns: Formation Name, Formation Top, Formation Base, Completion Information. Rows 1 and 2.

UNDER PENALTY OF PERJURY I HEREBY ATTEST THAT THE INFORMATION CONTAINED HEREIN IS TRUE AND CORRECT TO THE BEST OF MY KNOWLEDGE

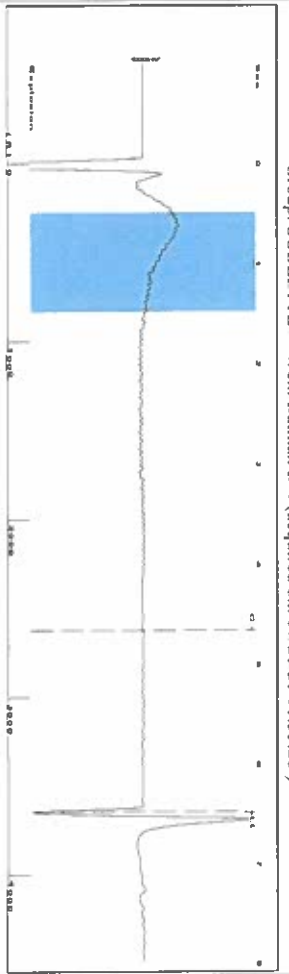
Submitted Electronically

Do NOT Write in This Space - KCC USE ONLY
Date Tested: Results: Date Plugged: Date Repaired: Date Put Back in Service:
Review Completed by: Comments:
TA Approved: Yes Denied Date:

Mail to the Appropriate KCC Conservation Office:

Table with 2 columns: Office Address, Phone. Rows for District Office #1, #2, #3, #4.

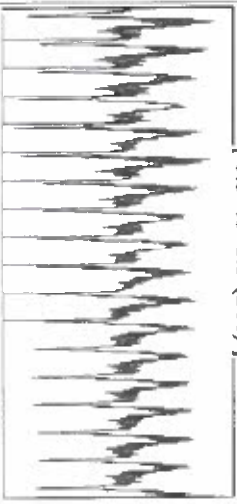
Group: SUBLETTE Well: Batman B-4 (acquired on: 07/21/21 11:55:28)



Filter Type High Pass Automatic Collar Count Yes
 Manual Acoustic Velo 1104.53 N/s Manual JTS/sec 17.4216

Time 6.48 sec
 Joints 114.873 J/s
 Depth 3641.47 ft

0.5 to 1.5 (Sec) |



Analysis Method: Automatic

Group: SUBLETTE Well: Batman B-4 (acquired on: 07/21/21 11:55:28)

Production	Potential	Casing Pressure
Current	BB/L/D	603.1 psi (g)
Oil	BB/L/D	Casing Pressure Buildup
Water	BB/L/D	-0.049 psi
Gas	Misc/D	1.00 min
IPR Method	Vogel	Gas/Liquid Interface Pressure
PBHP/SBHP	0.0	675.3 psi (g)
Production Efficiency		Liquid Level Depth
		3641.47 ft
Oil 40 deg API		Pump Intake Depth
Water 1.05 Sp.Gr:H2O		5460.00 ft
Gas 0.77 Sp.Gr:AIR		Formation Depth
Acoustic Velocity	1123.91 ft/s	5415.00 ft

Formation Submergence
 Total Gaseous Liquid Column HIT (TVD)
 Equivalent Gas Free Liquid HT (TVD)

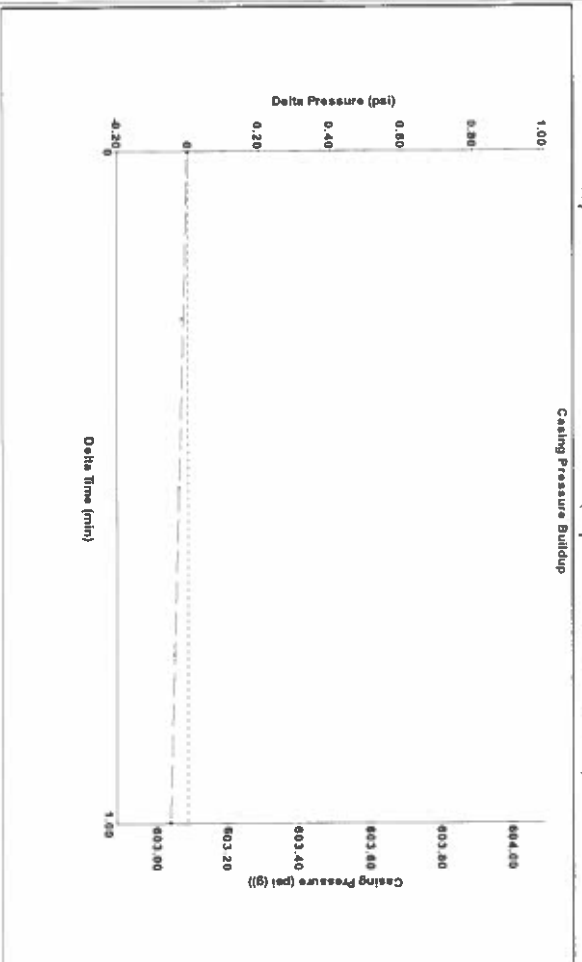
1819 ft
 1819 ft

7/21/21A



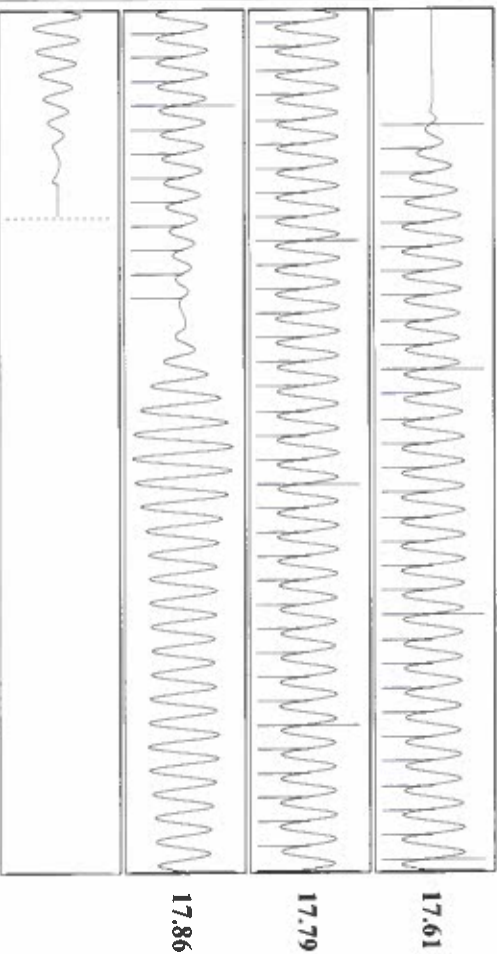
Producing
 Annular Gas Flow 0 Misc/D
 % Liquid 100 %
 Pump Intake 1242.3 psi (g)
 Producing BHP 1228.7 psi (g)
 Static BHP - psi (g)

Group: SUBLETTE Well: Batman B-4 (acquired on: 07/21/21 11:55:28)



Change in Pressure -0.05 psi PT 14679
 Change in Time 1.00 min Range

Group: SUBLETTE Well: Batman B-4 (acquired on: 07/21/21 11:55:28)



Acoustic Velocity 1123.91 ft/s Joints counted 78
 Joints Per Second 17.7273 Jts/sec Joints to liquid level 114.873
 Depth to liquid level 3641.47 ft Filter Width 15.4216
 Automatic Collar Count Yes Time to 1st Collar 0.268 4.668

Conservation Division
District Office No. 1
210 E. Frontview, Suite A
Dodge City, KS 67801



Phone: 620-682-7933
<http://kcc.ks.gov/>

Andrew J. French, Chairperson
Dwight D. Keen, Commissioner
Susan K. Duffy, Commissioner

Laura Kelly, Governor

July 22, 2021

Katherine McClurkan
Merit Energy Company, LLC
13727 Noel Road, Suite 1200
Dallas, TX 75240

Re: Temporary Abandonment
API 15-081-22171-00-00
Batman B 4
NE/4 Sec.10-28S-33W
Haskell County, Kansas

Dear Katherine McClurkan:

"Your temporary abandonment (TA) application for the well listed above has been approved. In accordance with K.A.R. 82-3-111 the TA status of this well will expire 07/22/2022.

- * If you return this well to service or plug it, please notify the District Office.
- * If you sell this well you are required to file a Transfer of Operator form, T-1.
- * If the well will remain temporarily abandoned, you must submit a new TA application, CP-111, before 07/22/2022.

You may contact me at the number above if you have questions.

Very truly yours,

Michael Maier"