

KANSAS CORPORATION COMMISSION
OIL & GAS CONSERVATION DIVISION

TEMPORARY ABANDONMENT WELL APPLICATION

OPERATOR: License#
Name:
Address 1:
Address 2:
City: State: Zip:
Contact Person:
Phone:
Contact Person Email:
Field Contact Person:
Field Contact Person Phone:

API No. 15-
Spot Description:
Sec. Twp. S. R.
GPS Location: Lat: Long:
Datum: NAD27 NAD83 WGS84
County: Elevation:
Lease Name: Well #:
Well Type: Oil Gas OG WSW Other:
SWD Permit #: ENHR Permit #:
Gas Storage Permit #:
Spud Date: Date Shut-In:

Table with 7 columns: Conductor, Surface, Production, Intermediate, Liner, Tubing. Rows include Size, Setting Depth, Amount of Cement, Top of Cement, Bottom of Cement.

Casing Fluid Level from Surface: How Determined? Date:
Casing Squeeze(s): to w / sacks of cement, to w / sacks of cement. Date:
Do you have a valid Oil & Gas Lease? Yes No
Depth and Type: Junk in Hole at Tools in Hole at Casing Leaks: Yes No Depth of casing leak(s):
Type Completion: ALT. I ALT. II Depth of: DV Tool: w / sacks of cement Port Collar: w / sack of cement
Packer Type: Size: Inch Set at: Feet
Total Depth: Plug Back Depth: Plug Back Method:

Geological Data:

Table with 4 columns: Formation Name, Formation Top, Formation Base, Completion Information. Rows 1 and 2.

UNDER PENALTY OF PERJURY I HEREBY ATTEST THAT THE INFORMATION CONTAINED HEREIN IS TRUE AND CORRECT TO THE BEST OF MY KNOWLEDGE

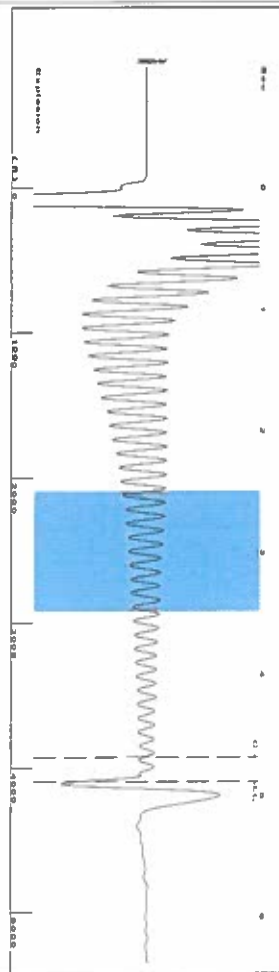
Submitted Electronically

Do NOT Write in This Space - KCC USE ONLY
Date Tested: Results: Date Plugged: Date Repaired: Date Put Back in Service:
Review Completed by: Comments:
TA Approved: Yes Denied Date:

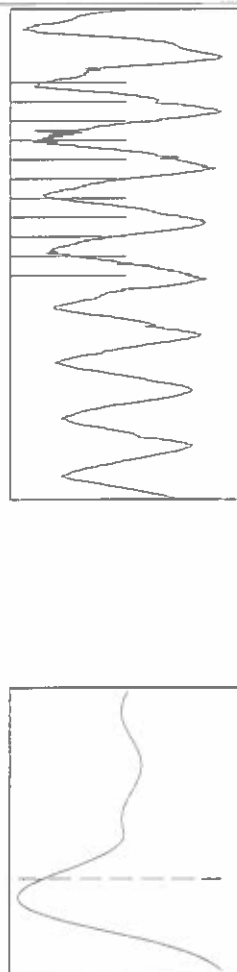
Mail to the Appropriate KCC Conservation Office:

Table with 3 columns: District Office, Address, Phone. Rows for District Office #1, #2, #3, #4.

Group: Ulysses East Well: NEMU 401W (acquired on: 07/21/21 12:40:37)



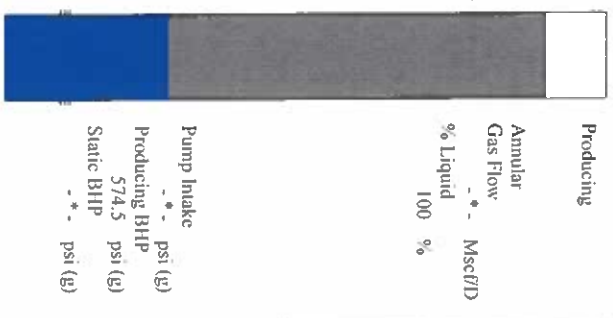
Filter Type: High Pass
Manual Acoustic Vel: 1605.06 f/s
Automatic Collar Count: Yes
Manual JTS/sec: 25.3165
Time: 4.889 sec
Joints: 129.298 J/s
Depth: 4098.74 ft



Analysis Method: Automatic

Group: Ulysses East Well: NEMU 401W (acquired on: 07/21/21 12:40:37)

Production Current	Potential	Casing Pressure	Producing
Oil: *	BB/LD	61.5 psi (g)	Annular Gas Flow
Water: *	BB/LD	Casing Pressure Buildup	% Liquid
Gas: *	Mscf/D	-0.021 psi	100 %
IPR Method: PBHP/SBHP	Vogel	Gas/Liquid Interface Pressure	Mscf/D
Production Efficiency: 0.0		67.5 psi (g)	
Oil: 40 deg API	Liquid Level Depth		
Water: 1.05 Sp.Gr./120	4098.74 ft		
Gas: 0.55 Sp.Gr./AIR	Pump Intake Depth		
Acoustic Velocity: 1676.72 ft/s	Formation Depth		
	5214.00 ft		
Formation Submergence			
Total Gaseous Liquid Column HT (TVD)	1115 ft		
Equivalent Gas Free Liquid HT (TVL)	1115 ft		
7/21/21			

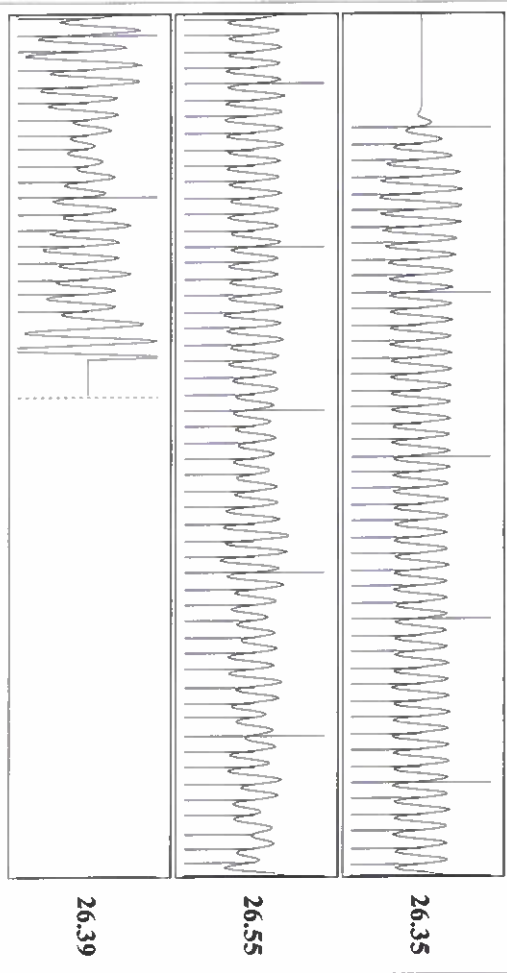


Group: Ulysses East Well: NEMU 401W (acquired on: 07/21/21 12:40:37)



Change in Pressure: -0.02 psi
Change in Time: 1.00 min
PTI14679 Range
0 - ? psi

Group: Ulysses East Well: NEMU 401W (acquired on: 07/21/21 12:40:37)



Acoustic Velocity: 1676.72 ft/s
Joints Per Second: 26.4467 J/s/sec
Depth to liquid level: 4098.74 ft
Automatic Collar Count: Yes

Joints counted: 117
Joints to liquid level: 129.298
Filter Width: 23.3165
Time to 1st Collar: 0.264

Conservation Division
District Office No. 1
210 E. Frontview, Suite A
Dodge City, KS 67801



Phone: 620-682-7933
<http://kcc.ks.gov/>

Andrew J. French, Chairperson
Dwight D. Keen, Commissioner
Susan K. Duffy, Commissioner

Laura Kelly, Governor

July 22, 2021

Katherine McClurkan
Merit Energy Company, LLC
13727 Noel Road, Suite 1200
Dallas, TX 75240

Re: Temporary Abandonment
API 15-081-20490-00-02
North Eubank Morrow Unit 401W
SW/4 Sec.34-27S-34W
Haskell County, Kansas

Dear Katherine McClurkan:

"Your temporary abandonment (TA) application for the well listed above has been approved. In accordance with K.A.R. 82-3-111 the TA status of this well will expire 07/22/2022.

- * If you return this well to service or plug it, please notify the District Office.
- * If you sell this well you are required to file a Transfer of Operator form, T-1.
- * If the well will remain temporarily abandoned, you must submit a new TA application, CP-111, before 07/22/2022.

You may contact me at the number above if you have questions.

Very truly yours,

Michael Maier"