

KANSAS CORPORATION COMMISSION  
OIL & GAS CONSERVATION DIVISION

TEMPORARY ABANDONMENT WELL APPLICATION

OPERATOR: License# \_\_\_\_\_  
 Name: \_\_\_\_\_  
 Address 1: \_\_\_\_\_  
 Address 2: \_\_\_\_\_  
 City: \_\_\_\_\_ State: \_\_\_\_\_ Zip: \_\_\_\_\_ + \_\_\_\_\_  
 Contact Person: \_\_\_\_\_  
 Phone: ( \_\_\_\_\_ ) \_\_\_\_\_  
 Contact Person Email: \_\_\_\_\_  
 Field Contact Person: \_\_\_\_\_  
 Field Contact Person Phone: ( \_\_\_\_\_ ) \_\_\_\_\_

API No. 15- \_\_\_\_\_  
 Spot Description: \_\_\_\_\_  
 \_\_\_\_\_ - \_\_\_\_\_ - \_\_\_\_\_ - \_\_\_\_\_ Sec. \_\_\_\_\_ Twp. \_\_\_\_\_ S. R. \_\_\_\_\_  E  W  
 \_\_\_\_\_ feet from  N /  S Line of Section  
 \_\_\_\_\_ feet from  E /  W Line of Section  
 GPS Location: Lat: \_\_\_\_\_, Long: \_\_\_\_\_  
(e.g. xx.xxxxx) (e.g. -xxx.xxxxx)  
 Datum:  NAD27  NAD83  WGS84  
 County: \_\_\_\_\_ Elevation: \_\_\_\_\_  GL  KB  
 Lease Name: \_\_\_\_\_ Well #: \_\_\_\_\_  
 Well Type: (check one)  Oil  Gas  OG  WSW  Other: \_\_\_\_\_  
 SWD Permit #: \_\_\_\_\_  ENHR Permit #: \_\_\_\_\_  
 Gas Storage Permit #: \_\_\_\_\_  
 Spud Date: \_\_\_\_\_ Date Shut-In: \_\_\_\_\_

	Conductor	Surface	Production	Intermediate	Liner	Tubing
Size						
Setting Depth						
Amount of Cement						
Top of Cement						
Bottom of Cement						

Casing Fluid Level from Surface: \_\_\_\_\_ How Determined? \_\_\_\_\_ Date: \_\_\_\_\_  
 Casing Squeeze(s): \_\_\_\_\_ to \_\_\_\_\_ w / \_\_\_\_\_ sacks of cement, \_\_\_\_\_ to \_\_\_\_\_ w / \_\_\_\_\_ sacks of cement. Date: \_\_\_\_\_  
(top) (bottom) (top) (bottom)  
 Do you have a valid Oil & Gas Lease?  Yes  No  
 Depth and Type:  Junk in Hole at \_\_\_\_\_  Tools in Hole at \_\_\_\_\_ Casing Leaks:  Yes  No Depth of casing leak(s): \_\_\_\_\_  
(depth) (depth)  
 Type Completion:  ALT. I  ALT. II Depth of:  DV Tool: \_\_\_\_\_ w / \_\_\_\_\_ sacks of cement  Port Collar: \_\_\_\_\_ w / \_\_\_\_\_ sack of cement  
(depth) (depth)  
 Packer Type: \_\_\_\_\_ Size: \_\_\_\_\_ Inch Set at: \_\_\_\_\_ Feet  
 Total Depth: \_\_\_\_\_ Plug Back Depth: \_\_\_\_\_ Plug Back Method: \_\_\_\_\_

**Geological Data:**

Formation Name	Formation Top	Formation Base	Completion Information
1. _____	At: _____	to _____ Feet	Perforation Interval _____ to _____ Feet or Open Hole Interval _____ to _____ Feet
2. _____	At: _____	to _____ Feet	Perforation Interval _____ to _____ Feet or Open Hole Interval _____ to _____ Feet

UNDER PENALTY OF PERJURY I HEREBY ATTEST THAT THE INFORMATION CONTAINED HEREIN IS TRUE AND CORRECT TO THE BEST OF MY KNOWLEDGE

Submitted Electronically

<b>Do NOT Write in This Space - KCC USE ONLY</b>	Date Tested: _____	Results: _____	Date Plugged: _____	Date Repaired: _____	Date Put Back in Service: _____
	Review Completed by: _____ Comments: _____				
TA Approved: <input type="checkbox"/> Yes <input type="checkbox"/> Denied Date: _____					

Mail to the Appropriate KCC Conservation Office:

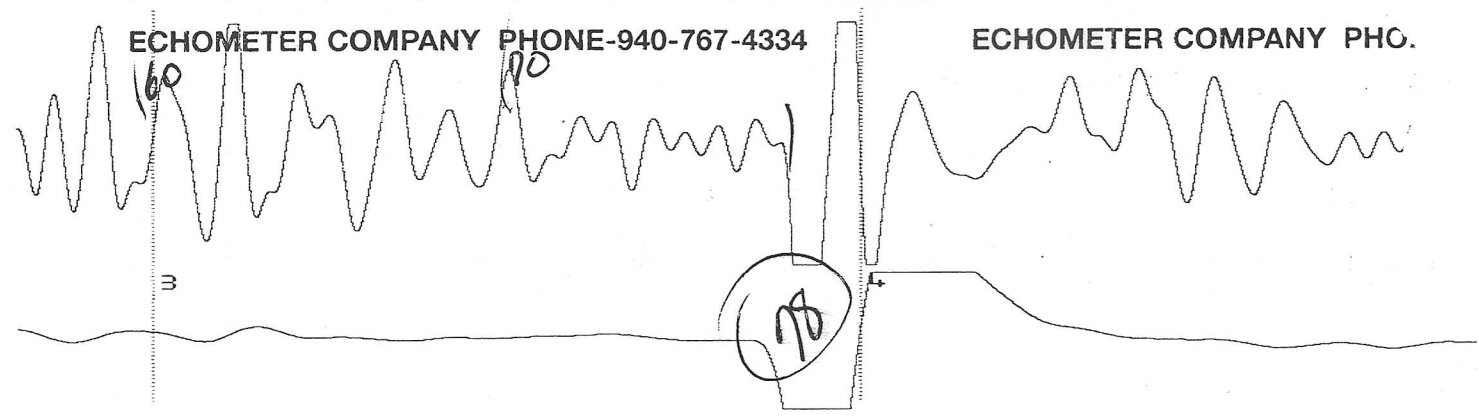
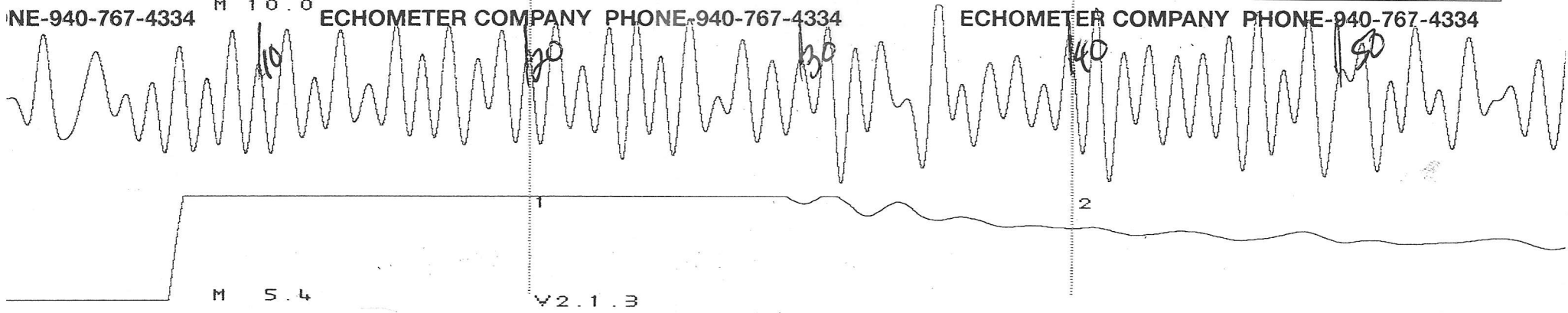
	KCC District Office #1 - 210 E. Frontview, Suite A, Dodge City, KS 67801	Phone 620.682.7933
	KCC District Office #2 - 3450 N. Rock Road, Building 600, Suite 601, Wichita, KS 67226	Phone 316.337.7400
	KCC District Office #3 - 137 E. 21st St., Chanute, KS 66720	Phone 620.902.6450
	KCC District Office #4 - 2301 E. 13th Street, Hays, KS 67601-2651	Phone 785.261.6250

PRECISION WIRELINE and TESTING  
 P.O. BOX 560  
 LIBERAL, KANSAS 67905-0560  
 620-629-0204

PRODUCER PANTERA ENERGY  
 WELL NAME POTTER #2  
 LOCATION 1250'FNL & 2570'FWL 3-24S-34W  
 COUNTY FINNEY STATE KS

CSG \_\_\_\_\_ WT \_\_\_\_\_ SET @ \_\_\_\_\_ TD \_\_\_\_\_ PB \_\_\_\_\_ GL \_\_\_\_\_  
 TBG \_\_\_\_\_ WT \_\_\_\_\_ SET @ \_\_\_\_\_ SN \_\_\_\_\_ PKR \_\_\_\_\_ KB \_\_\_\_\_  
 PERFS \_\_\_\_\_ TO \_\_\_\_\_ TO \_\_\_\_\_ TO \_\_\_\_\_ TO \_\_\_\_\_  
 PROVER \_\_\_\_\_ METER \_\_\_\_\_ TAPS \_\_\_\_\_ ORIFICE \_\_\_\_\_ PCR \_\_\_\_\_ TCR \_\_\_\_\_  
 GG \_\_\_\_\_ API \_\_\_\_\_ @ \_\_\_\_\_ GM \_\_\_\_\_ RESERVOIR \_\_\_\_\_

DATE TIME OF READING	ELAP TIME HOUR	WELLHEAD PRESSURE DATA						MEASUREMENT DATA				LIQUIDS		TYPE	INITIAL	SPEICAL	ENDING	
		CSG PSIG	$\Delta P$ CSG	TBG PSIG	$\Delta P$ TBG	BHP PSIG	$\Delta P$ BHP	PRESS PSIG	DIFF.	TEMP	Q MCFD	COND BBLs.	WATER BBLs.	TEST:	ANNUAL	RETEST	DATE	
THURSDAY																		
7-8-21																		7-8-21
1400		0			PUMP OFF													
REMARKS PERTINENT TO TEST DATA QUALITY																		
ASSUME AVERAGE JOINT LENGTH = 31.50'																		
CONDUCT LIQUID LEVEL DETERMINATION TEST																		
SHOT                      JTS. TO                      DISTANCE																		
#                              FLUID                      TO FLUID																		
1                              78.0                      2457'																		
2                              78.0                      2457'																		



July 29, 2021

Lisa Jones  
Pantera Energy Company  
817 S POLK ST STE 201  
AMARILLO, TX 79101-3433

Re: Temporary Abandonment  
API 15-055-20324-00-01  
POTTER 2  
N/2 Sec.03-24S-34W  
Finney County, Kansas

Dear Lisa Jones:

"Your temporary abandonment (TA) application for the well listed above has been approved. In accordance with K.A.R. 82-3-111 the TA status of this well will expire 07/29/2022.

- \* If you return this well to service or plug it, please notify the District Office.
- \* If you sell this well you are required to file a Transfer of Operator form, T-1.
- \* If the well will remain temporarily abandoned, you must submit a new TA application, CP-111, before 07/29/2022.

You may contact me at the number above if you have questions.

Very truly yours,

Michael Maier"