

KANSAS CORPORATION COMMISSION
OIL & GAS CONSERVATION DIVISION

Form must be Typed
Form must be signed

TEMPORARY ABANDONMENT WELL APPLICATION

All blanks must be complete

OPERATOR: License#
Name:
Address 1:
Address 2:
City: State: Zip:
Contact Person:
Phone:
Contact Person Email:
Field Contact Person:
Field Contact Person Phone:

API No. 15-
Spot Description:
Sec. Twp. S. R.
feet from N / S Line of Section
feet from E / W Line of Section
GPS Location: Lat: , Long:
Datum: NAD27 NAD83 WGS84
County: Elevation: GL KB
Lease Name: Well #:
Well Type: (check one) Oil Gas OG WSW Other:
SWD Permit #: ENHR Permit #:
Gas Storage Permit #:
Spud Date: Date Shut-In:

Table with 7 columns: Conductor, Surface, Production, Intermediate, Liner, Tubing. Rows include Size, Setting Depth, Amount of Cement, Top of Cement, Bottom of Cement.

Casing Fluid Level from Surface: How Determined? Date:
Casing Squeeze(s): to w / sacks of cement, to w / sacks of cement. Date:
Do you have a valid Oil & Gas Lease? Yes No
Depth and Type: Junk in Hole at Tools in Hole at Casing Leaks: Yes No Depth of casing leak(s):
Type Completion: ALT. I ALT. II Depth of: DV Tool: w / sacks of cement Port Collar: w / sack of cement
Packer Type: Size: Inch Set at: Feet
Total Depth: Plug Back Depth: Plug Back Method:

Geological Data:

Table with 4 columns: Formation Name, Formation Top, Formation Base, Completion Information. Rows 1 and 2.

UNDER PENALTY OF PERJURY I HEREBY ATTEST THAT THE INFORMATION CONTAINED HEREIN IS TRUE AND CORRECT TO THE BEST OF MY KNOWLEDGE

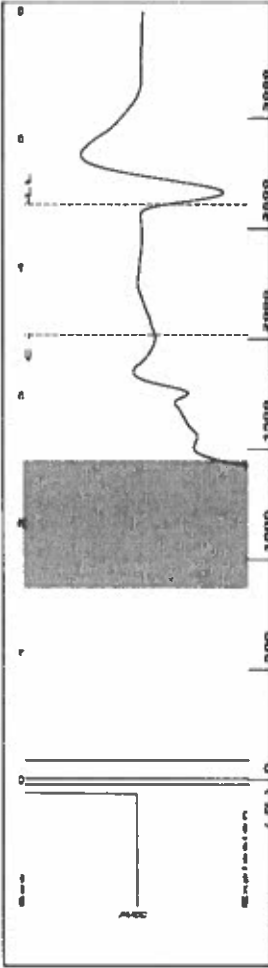
Submitted Electronically

Do NOT Write in This Space - KCC USE ONLY
Date Tested: Results: Date Plugged: Date Repaired: Date Put Back in Service:
Review Completed by: Comments:
TA Approved: Yes Denied Date:

Mail to the Appropriate KCC Conservation Office:

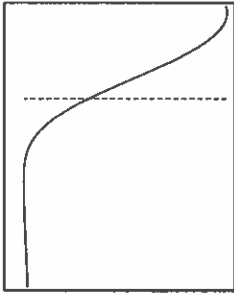
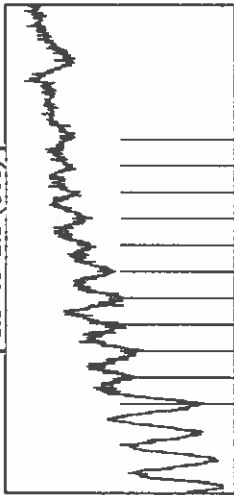
Table with 2 columns: Office Address, Phone. Rows for District Office #1, #2, #3, #4.

Group: TAD Well: whitbren A-3 (acquired on: 07/27/21 13:57:40)



Filter Type High Pass Automatic Collar Count Yes Time 4.485 sec
 Manual Acoustic Veloc 1167.59 ft/s Manual JTS/sec 18.4162 Joints 82.2808 Jts
 Depth 2608.30 ft

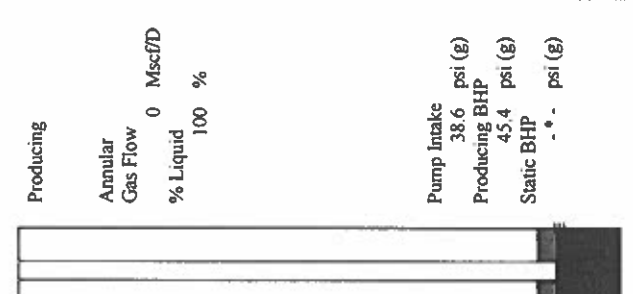
[1.5 to 2.5 (Sec)]



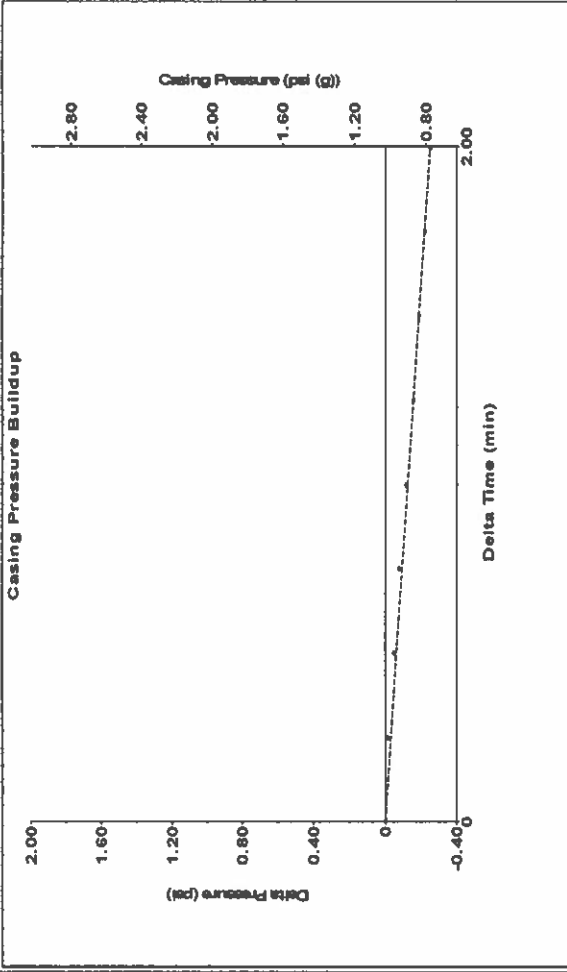
Analysis Method: Automatic

Group: TAD Well: whitbren A-3 (acquired on: 07/27/21 13:57:40)

Production	Potential	Casing Pressure	Producing
Current	1.0 psi (g)		Annular
Oil	- * - BBL/D	Casing Pressure Buildup	Gas Flow
Water	- * - BBL/D	-0.251 psi	0 Mscf/D
Gas	- * - Mscf/D	2.00 min	% Liquid
IPR Method	Vogel	Gas/Liquid Interface Pressure	100 %
PBHP/SBHP	- * -	2.2 psi (g)	
Production Efficiency	0.0	Liquid Level Depth	Pump Intake
Oil	40 deg API	2608.30 ft	38.6 psi (g)
Water	1.05 Sp.Gr.H2O	Pump Intake Depth	Producing BHP
Gas	0.84 Sp.Gr.AIR	2715.00 ft	45.4 psi (g)
Acoustic Velocity	1163.12 ft/s	Formation Depth	Static BHP
		2730.00 ft	- * - psi (g)
Formation Submergence			
Total Gaseous Liquid Column HT (TVD)	107 ft		
Equivalent Gas Free Liquid HT (TVD)	107 ft		
Acoustic Test			

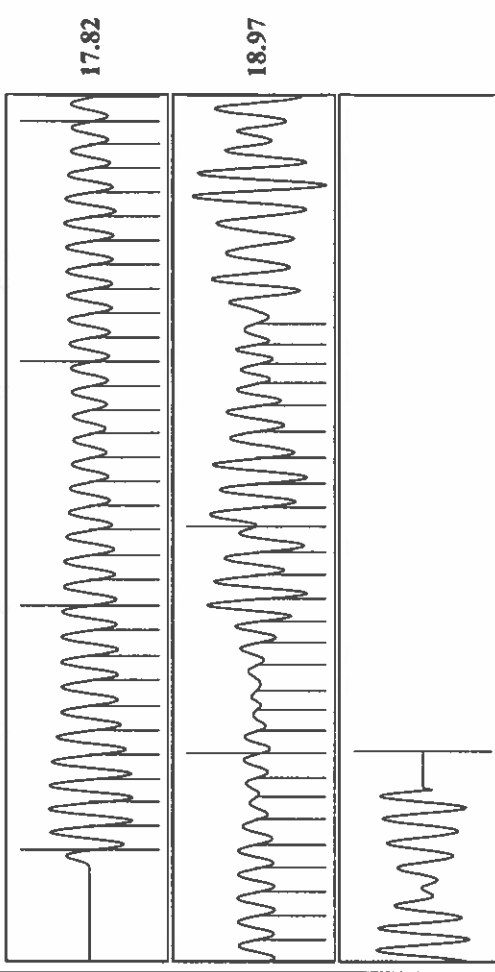


Group: TAD Well: whitbren A-3 (acquired on: 07/27/21 13:57:40)



Change in Pressure -0.25 psi PT 6902 Range 0 - 7 psi
 Change in Time 2.00 min

Group: TAD Well: whitbren A-3 (acquired on: 07/27/21 13:57:40)



Acoustic Velocity 1163.12 ft/s Joints counted 59
 Joints Per Second 18.3458 Jts/sec 82.2808
 Depth to liquid level 2608.3 ft Filter Width 16.4162
 Automatic Collar Count Yes Time to 1st Collar 0.256 3.472

July 29, 2021

Katherine McClurkan
Merit Energy Company, LLC
13727 Noel Road, Suite 1200
Dallas, TX 75240-7362

Re: Temporary Abandonment
API 15-093-21741-00-01
Whitman Brennaman A 3
SW/4 Sec.22-24S-35W
Kearny County, Kansas

Dear Katherine McClurkan:

"Your temporary abandonment (TA) application for the well listed above has been approved. In accordance with K.A.R. 82-3-111 the TA status of this well will expire 07/29/2022.

- * If you return this well to service or plug it, please notify the District Office.
- * If you sell this well you are required to file a Transfer of Operator form, T-1.
- * If the well will remain temporarily abandoned, you must submit a new TA application, CP-111, before 07/29/2022.

You may contact me at the number above if you have questions.

Very truly yours,

Michael Maier"