

KANSAS CORPORATION COMMISSION
OIL & GAS CONSERVATION DIVISION

TEMPORARY ABANDONMENT WELL APPLICATION

OPERATOR: License#
Name:
Address 1:
Address 2:
City: State: Zip:
Contact Person:
Phone:
Contact Person Email:
Field Contact Person:
Field Contact Person Phone:

API No. 15-
Spot Description:
Sec. Twp. S. R.
GPS Location: Lat: Long:
Datum: NAD27 NAD83 WGS84
County: Elevation:
Lease Name: Well #:
Well Type: Oil Gas OG WSW Other:
SWD Permit #: ENHR Permit #:
Gas Storage Permit #:
Spud Date: Date Shut-In:

Table with 7 columns: Conductor, Surface, Production, Intermediate, Liner, Tubing. Rows include Size, Setting Depth, Amount of Cement, Top of Cement, Bottom of Cement.

Casing Fluid Level from Surface: How Determined? Date:
Casing Squeeze(s): to w / sacks of cement, to w / sacks of cement. Date:
Do you have a valid Oil & Gas Lease? Yes No
Depth and Type: Junk in Hole at Tools in Hole at Casing Leaks: Yes No Depth of casing leak(s):
Type Completion: ALT. I ALT. II Depth of: DV Tool: w / sacks of cement Port Collar: w / sack of cement
Packer Type: Size: Inch Set at: Feet
Total Depth: Plug Back Depth: Plug Back Method:

Geological Data:

Table with 4 columns: Formation Name, Formation Top, Formation Base, Completion Information. Rows 1 and 2.

UNDER PENALTY OF PERJURY I HEREBY ATTEST THAT THE INFORMATION CONTAINED HEREIN IS TRUE AND CORRECT TO THE BEST OF MY KNOWLEDGE

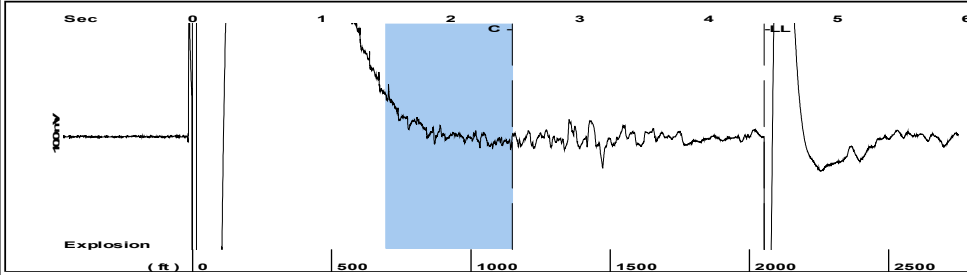
Submitted Electronically

Do NOT Write in This Space - KCC USE ONLY
Date Tested: Results: Date Plugged: Date Repaired: Date Put Back in Service:
Review Completed by: Comments:
TA Approved: Yes Denied Date:

Mail to the Appropriate KCC Conservation Office:

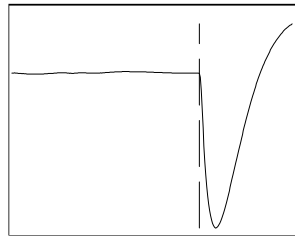
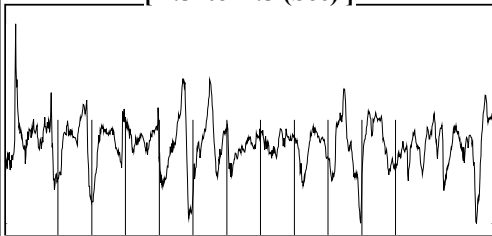
Table with 2 columns: Office Address, Phone. Rows for District Office #1, #2, #3, #4.

Group: MyWells Well: Maag P #2 twin (acquired on: 07/23/21 12:17:42)



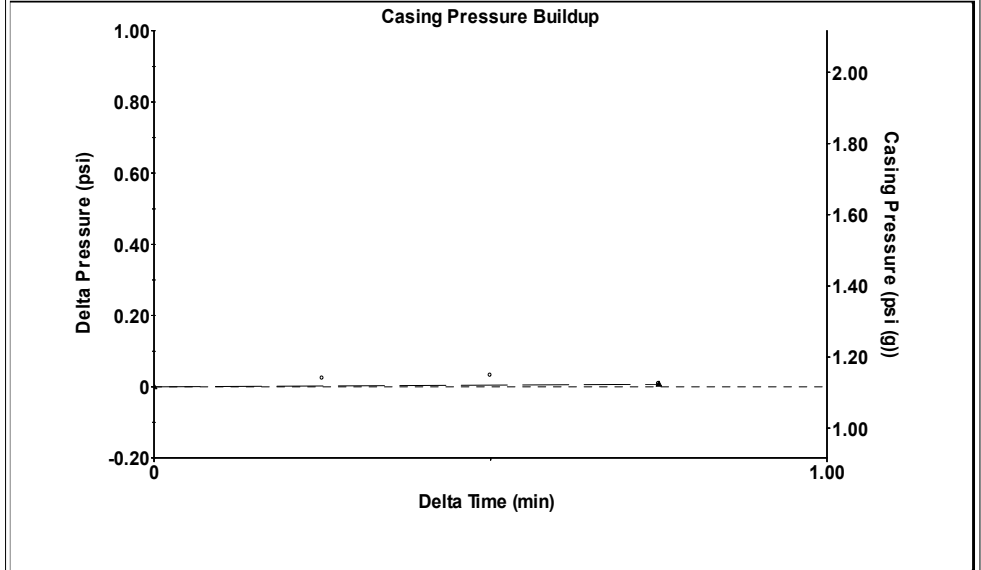
Filter Type High Pass Automatic Collar Count Yes Time 4.431 sec
 Manual Acoustic Veloc 913.545 ft/s Manual JTS/sec 14.4092 Joints 64.7386 Jts
 Depth 2052.21 ft

[1.5 to 2.5 (Sec)]



Analysis Method: Automatic

Group: MyWells Well: Maag P #2 twin (acquired on: 07/23/21 12:17:42)

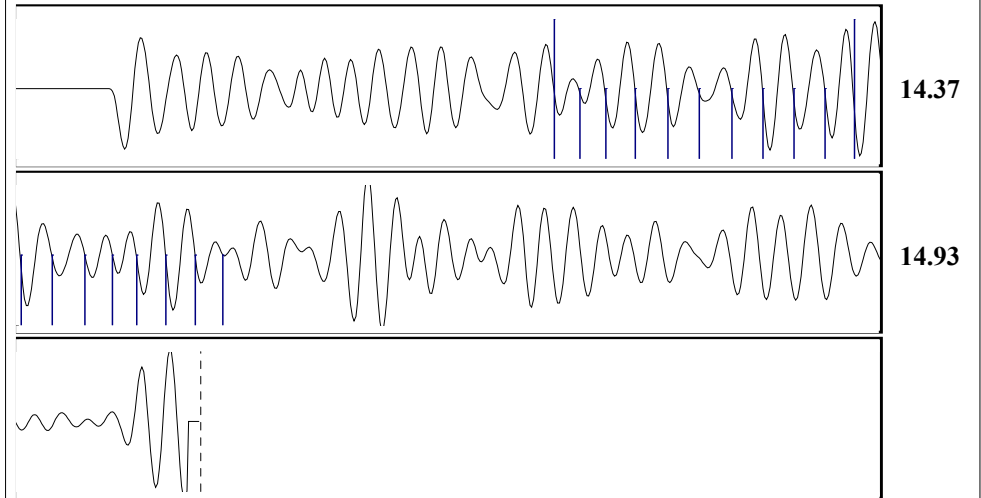


Change in Pressure 0.01 psi PT12830
 Change in Time 0.75 min Range 0 - ? psi

Group: MyWells Well: Maag P #2 twin (acquired on: 07/23/21 12:17:42)

Production Current	Potential	Casing Pressure	Producing
Oil - *-	- *- BBL/D	1.1 psi (g)	
Water - *-	- *- BBL/D	Casing Pressure Buildup	Annular Gas Flow - *- Mscf/D
Gas - *-	- *- Mscf/D	0.0 psi	% Liquid 100 %
		0.75 min	
IPR Method	Vogel	Gas/Liquid Interface Pressure	
PBHP/SBHP	- *-	- *- psi (g)	
Production Efficiency	0.0		
Oil 40 deg.API		Liquid Level Depth	
Water 1.05 Sp.Gr.H2O		2052.21 ft	
Gas 1.05 Sp.Gr.AIR		Pump Intake Depth	
		- *- ft	
Acoustic Velocity 926.299 ft/s		Formation Depth	
		3200.00 ft	
Formation Submergence		Pump Intake	
Total Gaseous Liquid Column HT (TVD)	- *- ft	- *- psi (g)	
Equivalent Gas Free Liquid HT (TVD)	- *- ft	Producing BHP	
		- *- psi (g)	
Acoustic Test		Static BHP	
		- *- psi (g)	

Group: MyWells Well: Maag P #2 twin (acquired on: 07/23/21 12:17:42)



Acoustic Velocity 926.299 ft/s Joints counted 18
 Joints Per Second 14.6104 jts/sec Joints to liquid level 64.7386
 Depth to liquid level 2052.21 ft Filter Width 12.4092 16.4092
 Automatic Collar Count Yes Time to 1st Collar 1.248 2.48

Conservation Division
District Office No. 4
2301 E. 13th Street
Hays, KS 67601-2651



Phone: 785-261-6250
Fax: 785-625-0564
<http://kcc.ks.gov/>

Andrew J. French, Chairperson
Dwight D. Keen, Commissioner
Susan K. Duffy, Commissioner

Laura Kelly, Governor

July 29, 2021

Brent Homeier
Mai Oil Operations, Inc.
8411 PRESTON RD STE 800
DALLAS, TX 75225-5520

Re: Temporary Abandonment
API 15-167-23510-00-00
MAAG P TWIN 2
SW/4 Sec.07-15S-13W
Russell County, Kansas

Dear Brent Homeier:

"Your temporary abandonment (TA) application for the well listed above has been approved. In accordance with K.A.R. 82-3-111 the TA status of this well will expire 07/29/2022.

- * If you return this well to service or plug it, please notify the District Office.
- * If you sell this well you are required to file a Transfer of Operator form, T-1.
- * If the well will remain temporarily abandoned, you must submit a new TA application, CP-111, before 07/29/2022.

You may contact me at the number above if you have questions.

Very truly yours,

RICHARD WILLIAMS"