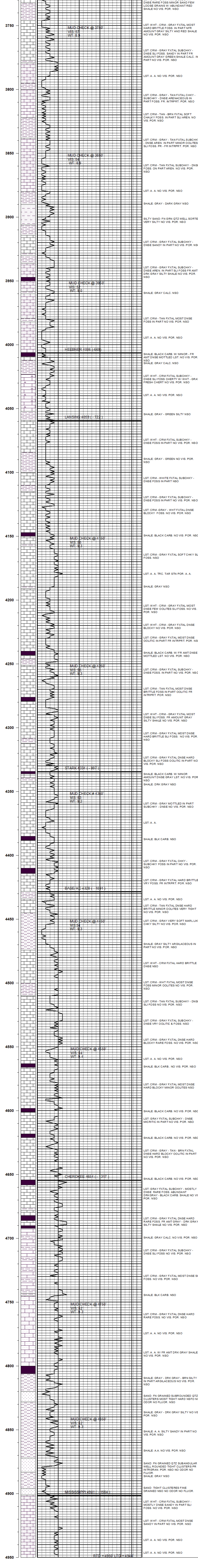


# KEVIN L. KESSLER

## CONSULTING PETROLEUM GEOLOGIST

( 316 ) 522 - 7338

<b>OPERATOR :</b> MULL DRILLING CO. INC.				<b>ELEVATION</b>	
<b>LEASE :</b> WOODS		<b>WELL # :</b> 1 - 12		<b>KB:</b> 3337'	
<b>LOCATION :</b> 1871' FSL & 1982' FWL					
<b>SEC :</b> 12		<b>TWP :</b> 16S		<b>RGE :</b> 37W	
<b>COUNTY :</b> WICHITA			<b>STATE :</b> KANSAS		
<b>CONTRACTOR:</b> DUKE DRILLING RIG # 4				<b>CASING RECORD:</b>	
<b>COMM:</b> 04 - 10 - 2019		<b>COMP:</b> 04 - 19 - 2019		<b>SURFACE:</b>	
<b>RTD:</b> 4950'		<b>LTD:</b> 4944'		<b>8 5/8" @ 253'</b>	
<b>GEOLOGICAL SUPERVISION FROM:</b> 3700'				<b>PRODUCTION:</b>	
<b>SAMPLES SAVED FROM:</b> 3700'				<b>NONE</b>	
<b>FORMATION:</b>		<b>TOP LOG DATUM</b>	<b>SAMPLE TOP DATUM</b>	<b>COMP.</b>	<b>ELECTRICAL SURVEYS:</b>
					DIL
HEEBNER	4006 - 669	4006 - 669	- 15		CNL/CDL
LANSING	4059 - 722	4059 - 722	- 23		MICRO
STARK	4334 - 997	4334 - 997	- 21		SONIC
BASE/KC	4428 - 1091	4428 - 1091	- 25		
CHEROKEE	4654 - 1317	4654 - 1317	- 22		
MISSISSIPPI	4901 - 1564	4901 - 1564	- 06		
<b>REFERENCE WELL FOR STRUCTURAL COMPARISON:</b>					
MULL DRLG #1-3 REDDING 03-16S-37W WICHITA CO. KS.					



**COMMENTS :**

DUE TO LACK OF SHOWS OF OIL THIS WELL WAS PLUGGED AND ABANDONED

KEVIN L. KESSLER