



## DRILL STEM TEST REPORT

Prepared For: **Palomino Petroleum Inc**

4924 SE 84th St  
Newton KS 67114+8827

ATTN: Andrew Stenzel

### **Hilton-Tokoi #4**

#### **26-17S-26W Ness,KS**

Start Date: 2019.06.28 @ 18:55:00

End Date: 2019.06.29 @ 01:34:15

Job Ticket #: 65959                      DST #: 1

Trilobite Testing, Inc  
1515 Commerce Parkway Hays, KS 67601  
ph: 785-625-4778 fax: 785-625-5620

Printed: 2019.07.02 @ 08:47:24



**TRILOBITE  
TESTING, INC.**

## DRILL STEM TEST REPORT

Palomino Petroleum Inc  
4924 SE 84th St  
New ton KS 67114+8827  
  
ATTN: Andrew Stenzel

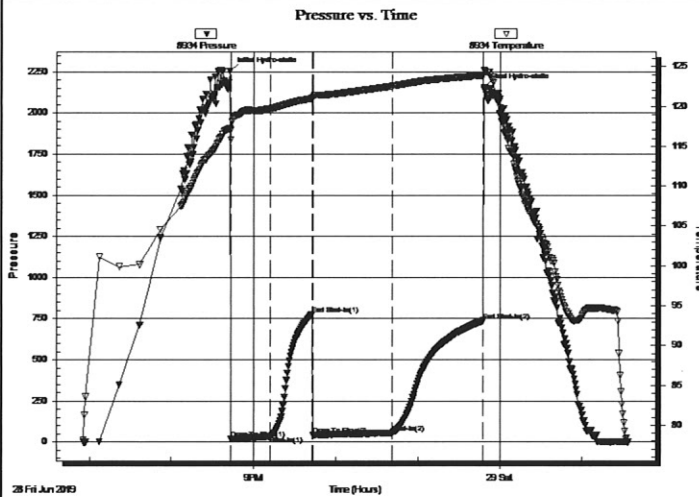
**26-17S-26W Ness,KS**  
**Hilton-Tokoi #4**  
Job Ticket: 65959      **DST#: 1**  
Test Start: 2019.06.28 @ 18:55:00

### GENERAL INFORMATION:

Formation: **Mississippi**  
Deviated: No Whipstock: ft (KB)  
Time Tool Opened: 20:42:45  
Time Test Ended: 01:34:15  
  
Interval: **4383.00 ft (KB) To 4398.00 ft (KB) (TVD)**  
Total Depth: 4398.00 ft (KB) (TVD)  
Hole Diameter: 7.88 inches Hole Condition: Fair  
  
Test Type: Conventional Bottom Hole (Initial)  
Tester: Spencer J Staab  
Unit No: 84  
  
Reference Elevations: 2444.00 ft (KB)  
2439.00 ft (CF)  
KB to GR/CF: 5.00 ft

**Serial #: 8934**      **Inside**  
Press@RunDepth: 55.40 psig @ 4384.00 ft (KB)      Capacity: 8000.00 psig  
Start Date: 2019.06.28      End Date: 2019.06.29      Last Calib.: 2019.06.29  
Start Time: 18:55:15      End Time: 01:34:15      Time On Btm: 2019.06.28 @ 20:42:30  
Time Off Btm: 2019.06.28 @ 23:48:30

TEST COMMENT: 30-IF-Weak; Built to 3"  
30-ISI-No Return  
60-FF-Weak; Built to 3&1/2"  
60-FSI-No Return



### PRESSURE SUMMARY

Time (Min.)	Pressure (psig)	Temp (deg F)	Annotation
0	2254.17	117.24	Initial Hydro-static
1	17.70	115.86	Open To Flow (1)
30	34.10	119.73	Shut-In(1)
60	776.56	121.00	End Shut-In(1)
61	40.14	121.13	Open To Flow (2)
119	55.40	122.55	Shut-In(2)
186	737.66	123.89	End Shut-In(2)
186	2153.82	124.55	Final Hydro-static

### Recovery

Length (ft)	Description	Volume (bbl)
30.00	HOCM 40%O 60%M	0.15
60.00	GO 50%G 50%O	0.30
0.00	30' GIP 100%G	0.00

### Gas Rates

Choke (inches)	Pressure (psig)	Gas Rate (Mcf/d)





**TRILOBITE  
TESTING, INC.**

## DRILL STEM TEST REPORT

**TOOL DIAGRAM**

Palomino Petroleum Inc  
4924 SE 84th St  
New ton KS 67114+8827  
ATTN: Andrew Stenzel

**26-17S-26W Ness,KS**  
**Hilton-Tokoi #4**  
Job Ticket: 65959      **DST#: 1**  
Test Start: 2019.06.28 @ 18:55:00

### Tool Information

Drill Pipe:	Length: 4266.00 ft	Diameter: 3.82 inches	Volume: 60.47 bbl	Tool Weight: 2500.00 lb
Heavy Wt. Pipe:	Length:            ft	Diameter: 2.75 inches	Volume: - bbl	Weight set on Packer: 25000.00 lb
Drill Collar:	Length: 118.00 ft	Diameter: 2.25 inches	Volume: 0.58 bbl	Weight to Pull Loose: 58000.00 lb
			<u>Total Volume: - bbl</u>	Tool Chased                            ft
Drill Pipe Above KB:	30.00 ft			String Weight: Initial 55000.00 lb
Depth to Top Packer:	4383.00 ft			Final 56000.00 lb
Depth to Bottom Packer:	ft			
Interval between Packers:	15.00 ft			
Tool Length:	44.00 ft			
Number of Packers:	1	Diameter: 6.75 inches		

Tool Comments:

Tool Description	Length (ft)	Serial No.	Position	Depth (ft)	Accum. Lengths
Change Over Sub	1.00			4355.00	
Shut In Tool	5.00			4360.00	
Hydraulic tool	5.00			4365.00	
Jars	5.00			4370.00	
Safety Joint	3.00			4373.00	
Packer	5.00			4378.00	29.00      Bottom Of Top Packer
Packer	5.00			4383.00	
Stubb	1.00			4384.00	
Recorder	0.00	8934	Inside	4384.00	
Recorder	0.00	8352	Outside	4384.00	
Perforations	11.00			4395.00	
Bullnose	3.00			4398.00	15.00      Bottom Packers & Anchor

**Total Tool Length: 44.00**



**TRILOBITE  
TESTING, INC.**

# DRILL STEM TEST REPORT

**FLUID SUMMARY**

Palomino Petroleum Inc  
4924 SE 84th St  
New ton KS 67114+8827  
  
ATTN: Andrew Stenzel

**26-17S-26W Ness,KS**  
**Hilton-Tokoi #4**  
Job Ticket: 65959      **DST#: 1**  
Test Start: 2019.06.28 @ 18:55:00

## Mud and Cushion Information

Mud Type:	Gel Chem	Cushion Type:		Oil API:	41 deg API
Mud Weight:	9.00 lb/gal	Cushion Length:	ft	Water Salinity:	ppm
Viscosity:	56.00 sec/qt	Cushion Volume:	bbl		
Water Loss:	7.98 in <sup>3</sup>	Gas Cushion Type:			
Resistivity:	ohm.m	Gas Cushion Pressure:	psig		
Salinity:	4400.00 ppm				
Filter Cake:	inches				

## Recovery Information

Recovery Table

Length ft	Description	Volume bbl
30.00	HOCM 40%O 60%M	0.148
60.00	GO 50%G 50%O	0.295
0.00	30' GIP 100%G	0.000

Total Length: 90.00 ft      Total Volume: 0.443 bbl

Num Fluid Samples: 0      Num Gas Bombs: 0      Serial #:

Laboratory Name:      Laboratory Location:

Recovery Comments: 2#LCM

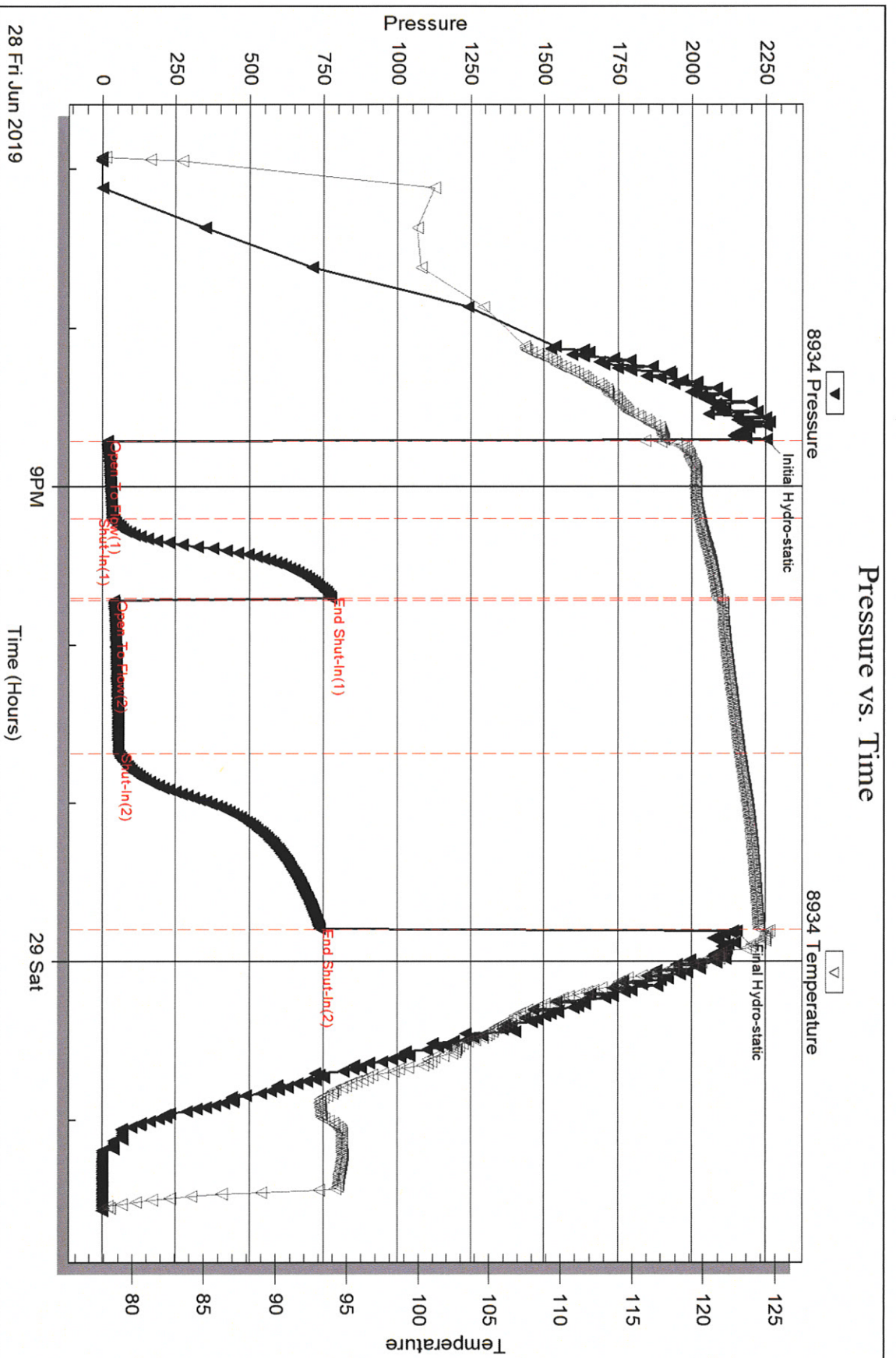
Serial #: 8934

Inside

Palomino Petroleum Inc

Hilton-Tokoi #4

DST Test Number: 1



Triobite Testing, Inc

Ref. No: 65959

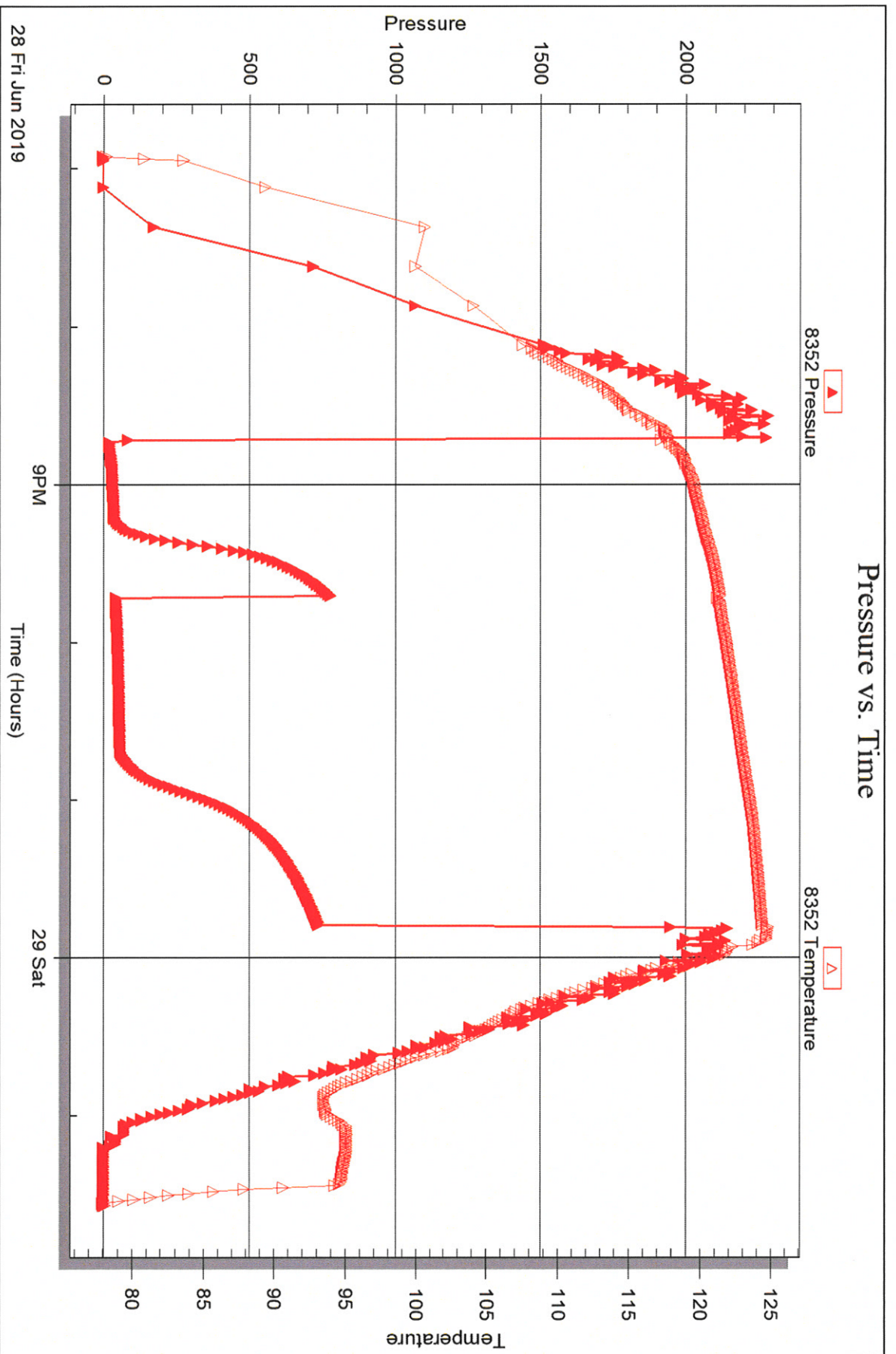
Printed: 2019.07.02 @ 08:47:25

Serial #: 8352

Outside Palomino Petroleum Inc

Hilton-Tokoi #4

DST Test Number: 1





## DRILL STEM TEST REPORT

Prepared For: **Palomino Petroleum Inc**

4924 SE 84th St  
Newton KS 67114+8827

ATTN: Andrew Stenzel

### **Hilton-Tokoi #4**

#### **26-17S-26W Ness,KS**

Start Date: 2019.06.29 @ 07:53:00

End Date: 2019.06.29 @ 14:20:15

Job Ticket #: 65960                      DST #: 2

Trilobite Testing, Inc  
1515 Commerce Parkway Hays, KS 67601  
ph: 785-625-4778 fax: 785-625-5620

Printed: 2019.07.02 @ 08:45:41





**TRILOBITE TESTING, INC.**

# DRILL STEM TEST REPORT

Palomino Petroleum Inc  
 4924 SE 84th St  
 Newton KS 67114+8827  
 ATTN: Andrew Stenzel

**26-17S-26W Ness,KS**  
**Hilton-Tokoi #4**  
 Job Ticket: 65960      **DST#: 2**  
 Test Start: 2019.06.29 @ 07:53:00

## GENERAL INFORMATION:

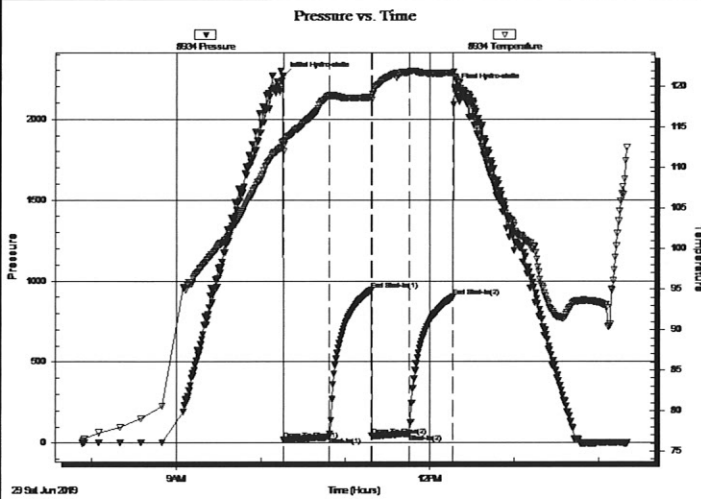
Formation: **Mississippi**  
 Deviated: No Whipstock: ft (KB)  
 Time Tool Opened: 10:16:00  
 Time Test Ended: 14:20:15  
 Interval: **4399.00 ft (KB) To 4417.00 ft (KB) (TVD)**  
 Total Depth: 4417.00 ft (KB) (TVD)  
 Hole Diameter: 7.88 inches Hole Condition: Fair  
 Test Type: Conventional Bottom Hole (Reset)  
 Tester: Spencer J Staab  
 Unit No: 84  
 Reference Elevations: 2444.00 ft (KB)  
 2439.00 ft (CF)  
 KB to GR/CF: 5.00 ft

## Serial #: 8934

Inside

Press@RunDepth: 57.00 psig @ 4400.00 ft (KB)      Capacity: 8000.00 psig  
 Start Date: 2019.06.29      End Date: 2019.06.29      Last Calib.: 2019.06.29  
 Start Time: 07:53:15      End Time: 14:20:15      Time On Btm: 2019.06.29 @ 10:15:45  
 Time Off Btm: 2019.06.29 @ 12:17:30

TEST COMMENT: 30-IF-Weak; Built to 2&1/4"  
 30-ISI-No Return  
 30-FF-Weak; Built to 3/4"; Flushed No Help  
 30-FSI-No Return



## PRESSURE SUMMARY

Time (Min.)	Pressure (psig)	Temp (deg F)	Annotation
0	2269.97	113.32	Initial Hydro-static
1	18.09	111.99	Open To Flow (1)
33	37.07	118.90	Shut-In(1)
63	941.64	118.72	End Shut-In(1)
63	42.44	118.42	Open To Flow (2)
90	57.00	121.85	Shut-In(2)
121	899.87	121.74	End Shut-In(2)
122	2197.00	121.18	Final Hydro-static

## Recovery

Length (ft)	Description	Volume (bbl)
70.00	OSMW 40%M 60%W	0.34

\* Recovery from multiple tests

## Gas Rates

Choke (inches)	Pressure (psig)	Gas Rate (Mcf/d)





**TRILOBITE  
TESTING, INC.**

## DRILL STEM TEST REPORT

**TOOL DIAGRAM**

Palomino Petroleum Inc  
4924 SE 84th St  
New ton KS 67114+8827  
  
ATTN: Andrew Stenzel

**26-17S-26W Ness,KS**  
**Hilton-Tokoi #4**  
Job Ticket: 65960      **DST#: 2**  
Test Start: 2019.06.29 @ 07:53:00

### Tool Information

Drill Pipe:	Length: 4260.00 ft	Diameter: 3.82 inches	Volume: 60.39 bbl	Tool Weight: 2500.00 lb
Heavy Wt. Pipe:	Length: ft	Diameter: 2.75 inches	Volume: - bbl	Weight set on Packer: 25000.00 lb
Drill Collar:	Length: 118.00 ft	Diameter: 2.25 inches	Volume: 0.58 bbl	Weight to Pull Loose: 58000.00 lb
			<u>Total Volume: - bbl</u>	Tool Chased ft
Drill Pipe Above KB:	8.00 ft			String Weight: Initial 56000.00 lb
Depth to Top Packer:	4399.00 ft			Final 57000.00 lb
Depth to Bottom Packer:	ft			
Interval between Packers:	18.00 ft			
Tool Length:	47.00 ft			
Number of Packers:	1	Diameter: 6.75 inches		

Tool Comments:

Tool Description	Length (ft)	Serial No.	Position	Depth (ft)	Accum. Lengths
Change Over Sub	1.00			4371.00	
Shut In Tool	5.00			4376.00	
Hydraulic tool	5.00			4381.00	
Jars	5.00			4386.00	
Safety Joint	3.00			4389.00	
Packer	5.00			4394.00	29.00      Bottom Of Top Packer
Packer	5.00			4399.00	
Stubb	1.00			4400.00	
Recorder	0.00	8934	Inside	4400.00	
Recorder	0.00	8352	Outside	4400.00	
Perforations	14.00			4414.00	
Bullnose	3.00			4417.00	18.00      Bottom Packers & Anchor

**Total Tool Length: 47.00**



**TRILOBITE**  
**TESTING, INC.**

# DRILL STEM TEST REPORT

**FLUID SUMMARY**

Palomino Petroleum Inc  
4924 SE 84th St  
New ton KS 67114+8827  
ATTN: Andrew Stenzel

**26-17S-26W Ness,KS**  
**Hilton-Tokoi #4**  
Job Ticket: 65960      **DST#: 2**  
Test Start: 2019.06.29 @ 07:53:00

## Mud and Cushion Information

Mud Type: Gel Chem	Cushion Type:	Oil API:	deg API
Mud Weight: 9.00 lb/gal	Cushion Length: ft	Water Salinity:	66000 ppm
Viscosity: 56.00 sec/qt	Cushion Volume: bbl		
Water Loss: 8.59 in <sup>3</sup>	Gas Cushion Type:		
Resistivity: ohm.m	Gas Cushion Pressure: psig		
Salinity: 6000.00 ppm			
Filter Cake: inches			

## Recovery Information

Recovery Table

Length ft	Description	Volume bbl
70.00	OSMW 40%M 60%W	0.344

Total Length: 70.00 ft      Total Volume: 0.344 bbl

Num Fluid Samples: 0      Num Gas Bombs: 0      Serial #:

Laboratory Name:      Laboratory Location:

Recovery Comments: 2#LCM  
RW=.078@100F

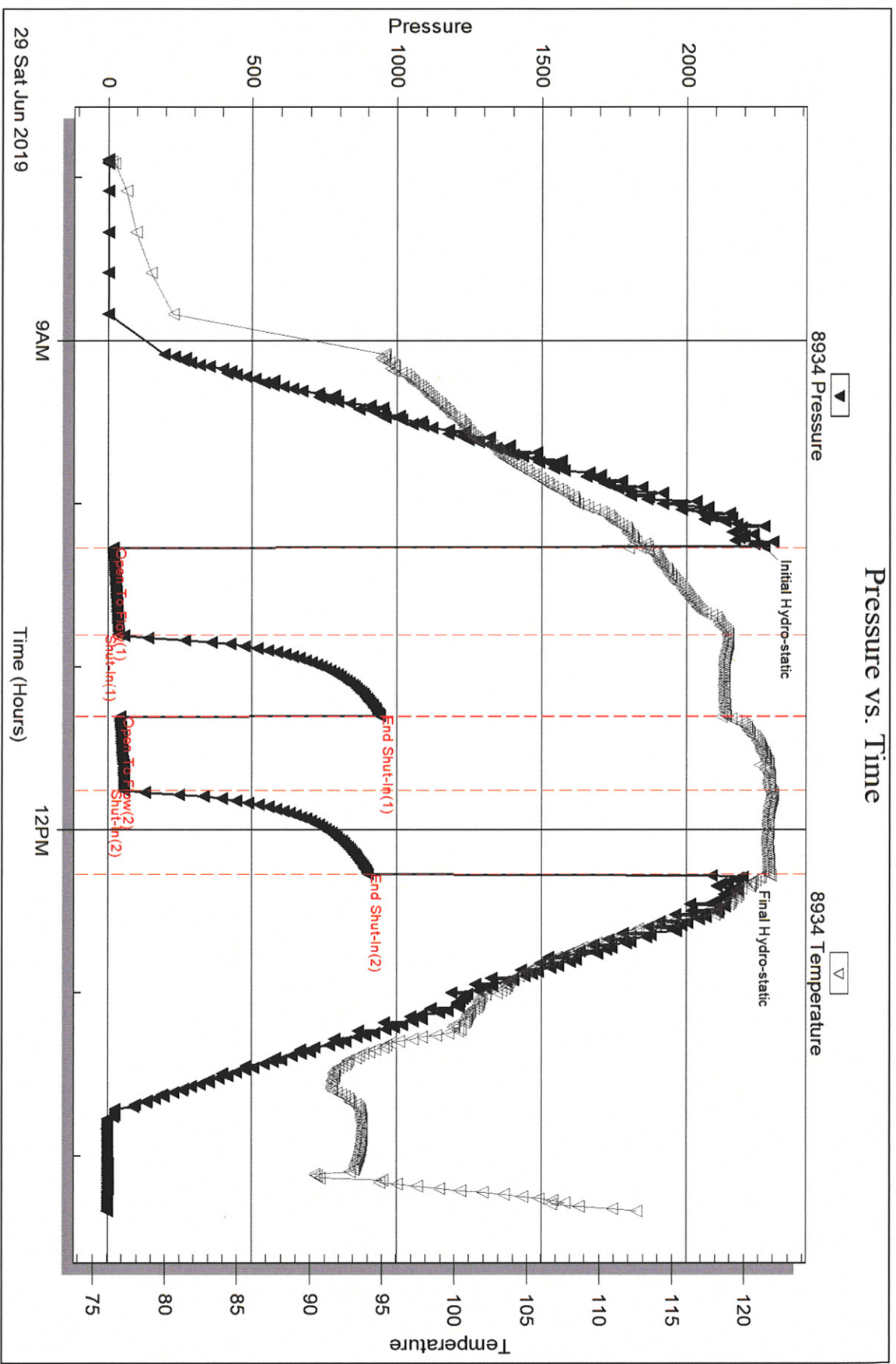
Serial #: 8934

Inside

Palomino Petroleum Inc

Hilton-Tokoi #4

DST Test Number: 2



Trilobite Testing, Inc

Ref. No: 65960

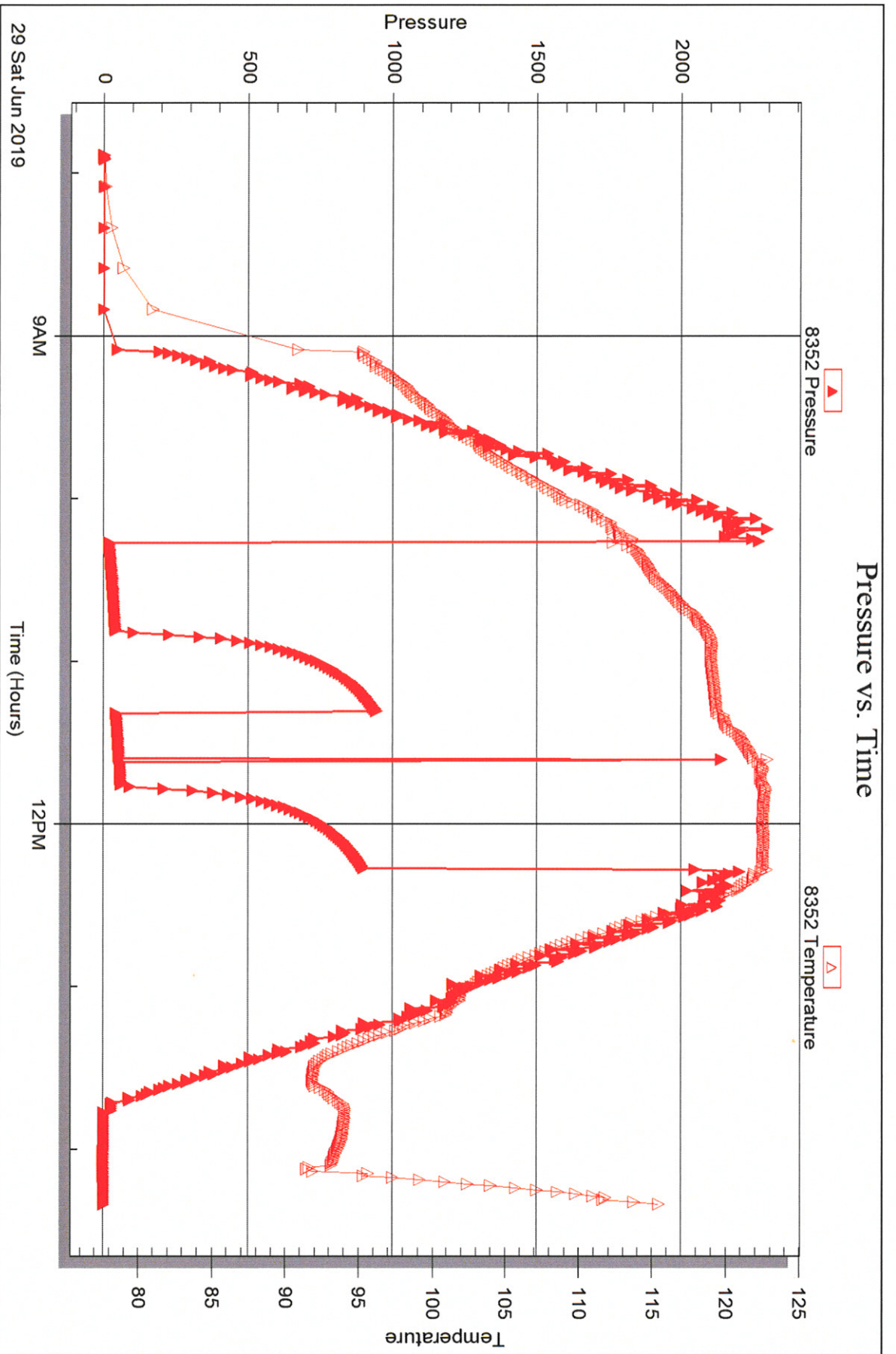
Printed: 2019.07.02 @ 08:45:42

Serial #: 8352

Outside Palomino Petroleum Inc

Hilton-Tokoi #4

DST Test Number: 2





## DRILL STEM TEST REPORT

Prepared For: **Palomino Petroleum Inc**

4924 SE 84th St  
Newton KS 67114+8827

ATTN: Andrew Stenzel

### **Hilton-Tokoi #4**

### **26-17S-26W Ness,KS**

Start Date: 2019.06.30 @ 02:55:00

End Date: 2019.06.30 @ 09:38:15

Job Ticket #: 65961                      DST #: 3

Trilobite Testing, Inc

1515 Commerce Parkway Hays, KS 67601

ph: 785-625-4778 fax: 785-625-5620

Printed: 2019.07.02 @ 08:43:34



**TRILOBITE  
TESTING, INC.**

# DRILL STEM TEST REPORT

Palomino Petroleum Inc  
4924 SE 84th St  
New ton KS 67114+8827  
ATTN: Andrew Stenzel

**26-17S-26W Ness,KS**  
**Hilton-Tokoi #4**  
Job Ticket: 65961      **DST#: 3**  
Test Start: 2019.06.30 @ 02:55:00

## GENERAL INFORMATION:

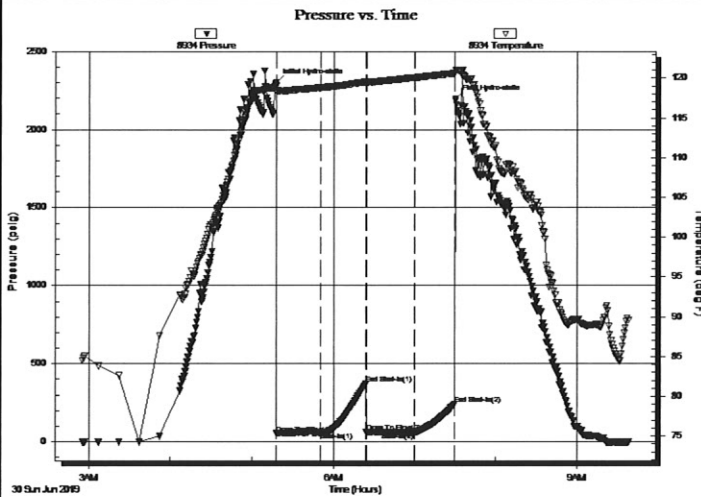
Formation: **Cong**  
Deviated: No Whipstock: ft (KB)  
Time Tool Opened: 05:18:15  
Time Test Ended: 09:38:15  
Interval: **4300.00 ft (KB) To 4387.00 ft (KB) (TVD)**  
Total Depth: 4490.00 ft (KB) (TVD)  
Hole Diameter: 7.88 inches Hole Condition: Fair  
Test Type: Conventional Straddle (Reset)  
Tester: Spencer J Staab  
Unit No: 84  
Reference Elevations: 2444.00 ft (KB)  
2439.00 ft (CF)  
KB to GR/CF: 5.00 ft

## Serial #: 8934

Inside

Press@RunDepth: 60.70 psig @ 4365.00 ft (KB)  
Start Date: 2019.06.30 End Date: 2019.06.30  
Start Time: 02:55:15 End Time: 09:38:15  
Capacity: 8000.00 psig  
Last Calib.: 2019.06.30  
Time On Btm: 2019.06.30 @ 05:18:00  
Time Off Btm: 2019.06.30 @ 07:30:30

TEST COMMENT: 30-IF-Weak; Built to 1/2"  
30-ISI-No Return  
30-FF-Weak Surface  
30-FSI-No Return



## PRESSURE SUMMARY

Time (Min.)	Pressure (psig)	Temp (deg F)	Annotation
0	2298.92	119.02	Initial Hydro-static
1	53.78	118.33	Open To Flow (1)
32	60.71	118.80	Shut-In(1)
66	370.60	119.55	End Shut-In(1)
66	60.99	119.38	Open To Flow (2)
102	60.70	120.07	Shut-In(2)
132	241.48	120.63	End Shut-In(2)
133	2195.99	121.01	Final Hydro-static

## Recovery

Length (ft)	Description	Volume (bbl)
20.00	OSM 100%M	0.10

\* Recovery from multiple tests

## Gas Rates

Choke (inches)	Pressure (psig)	Gas Rate (Mcf/d)









**TRILOBITE**  
TESTING, INC.

## DRILL STEM TEST REPORT

TOOL DIAGRAM

Palomino Petroleum Inc  
4924 SE 84th St  
New ton KS 67114+8827  
ATTN: Andrew Stenzel

**26-17S-26W Ness,KS**  
**Hilton-Tokoi #4**  
Job Ticket: 65961      **DST#: 3**  
Test Start: 2019.06.30 @ 02:55:00

### Tool Information

Drill Pipe:	Length: 4168.00 ft	Diameter: 3.82 inches	Volume: 59.08 bbl	Tool Weight: 2500.00 lb
Heavy Wt. Pipe:	Length: ft	Diameter: 2.75 inches	Volume: - bbl	Weight set on Packer: 25000.00 lb
Drill Collar:	Length: 118.00 ft	Diameter: 2.25 inches	Volume: 0.58 bbl	Weight to Pull Loose: 60000.00 lb
			<u>Total Volume: - bbl</u>	Tool Chased ft
Drill Pipe Above KB:	15.00 ft			String Weight: Initial 56000.00 lb
Depth to Top Packer:	4300.00 ft			Final 56000.00 lb
Depth to Bottom Packer:	4386.00 ft			
Interval between Packers:	86.00 ft			
Tool Length:	218.00 ft			
Number of Packers:	1	Diameter: 6.75 inches		

Tool Comments:

Tool Description	Length (ft)	Serial No.	Position	Depth (ft)	Accum. Lengths
Change Over Sub	1.00			4272.00	
Shut In Tool	5.00			4277.00	
Hydraulic tool	5.00			4282.00	
Jars	5.00			4287.00	
Safety Joint	3.00			4290.00	
Packer	5.00			4295.00	29.00      Bottom Of Top Packer
Packer	5.00			4300.00	
Stubb	1.00			4301.00	
Perforations	1.00			4302.00	
Drill Pipe	62.00			4364.00	
Change Over Sub	1.00			4365.00	
Recorder	0.00	8934	Inside	4365.00	
Recorder	0.00	8352	Outside	4365.00	
Perforations	16.00			4381.00	
Blank Off Sub	1.00			4382.00	
Top S. Packer	4.00			4386.00	86.00      Tool Interval
Packer	0.00			4386.00	
Stubb	1.00			4387.00	
Perforations	3.00			4390.00	
Change Over Sub	1.00			4391.00	
Recorder	0.00	9120	Below	4391.00	
Drill Pipe	94.00			4485.00	
Change Over Sub	1.00			4486.00	
Bullnose	3.00			4489.00	103.00      Bottom Packers & Anchor
<b>Total Tool Length:</b>	<b>218.00</b>				



**TRILOBITE  
TESTING, INC.**

## DRILL STEM TEST REPORT

**FLUID SUMMARY**

Palomino Petroleum Inc  
4924 SE 84th St  
New ton KS 67114+8827  
ATTN: Andrew Stenzel

**26-17S-26W Ness,KS**  
**Hilton-Tokoi #4**  
Job Ticket: 65961      **DST#: 3**  
Test Start: 2019.06.30 @ 02:55:00

### Mud and Cushion Information

Mud Type: Gel Chem	Cushion Type:	Oil API:	deg API
Mud Weight: 9.00 lb/gal	Cushion Length: ft	Water Salinity:	ppm
Viscosity: 56.00 sec/qt	Cushion Volume: bbl		
Water Loss: 9.59 in <sup>3</sup>	Gas Cushion Type:		
Resistivity: ohm.m	Gas Cushion Pressure: psig		
Salinity: 5000.00 ppm			
Filter Cake: inches			

### Recovery Information

Recovery Table

Length ft	Description	Volume bbl
20.00	OSM 100%M	0.098

Total Length: 20.00 ft      Total Volume: 0.098 bbl  
Num Fluid Samples: 0      Num Gas Bombs: 0      Serial #:  
Laboratory Name:      Laboratory Location:  
Recovery Comments: 2#LCM

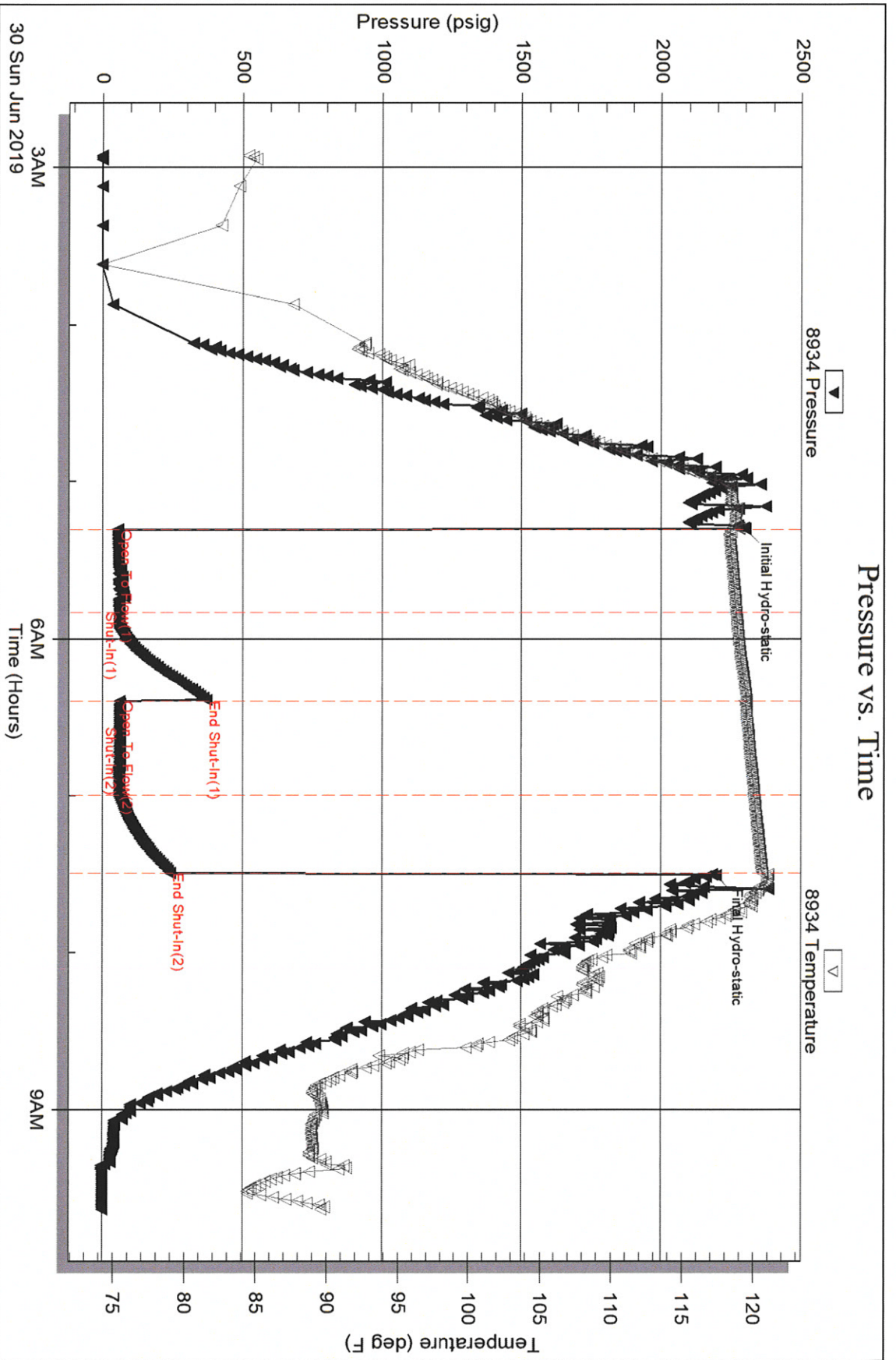
Serial #: 8934

Inside

Palomino Petroleum Inc

Hilton-Tokoi #4

DST Test Number: 3



Trilobite Testing, Inc

Ref. No: 65961

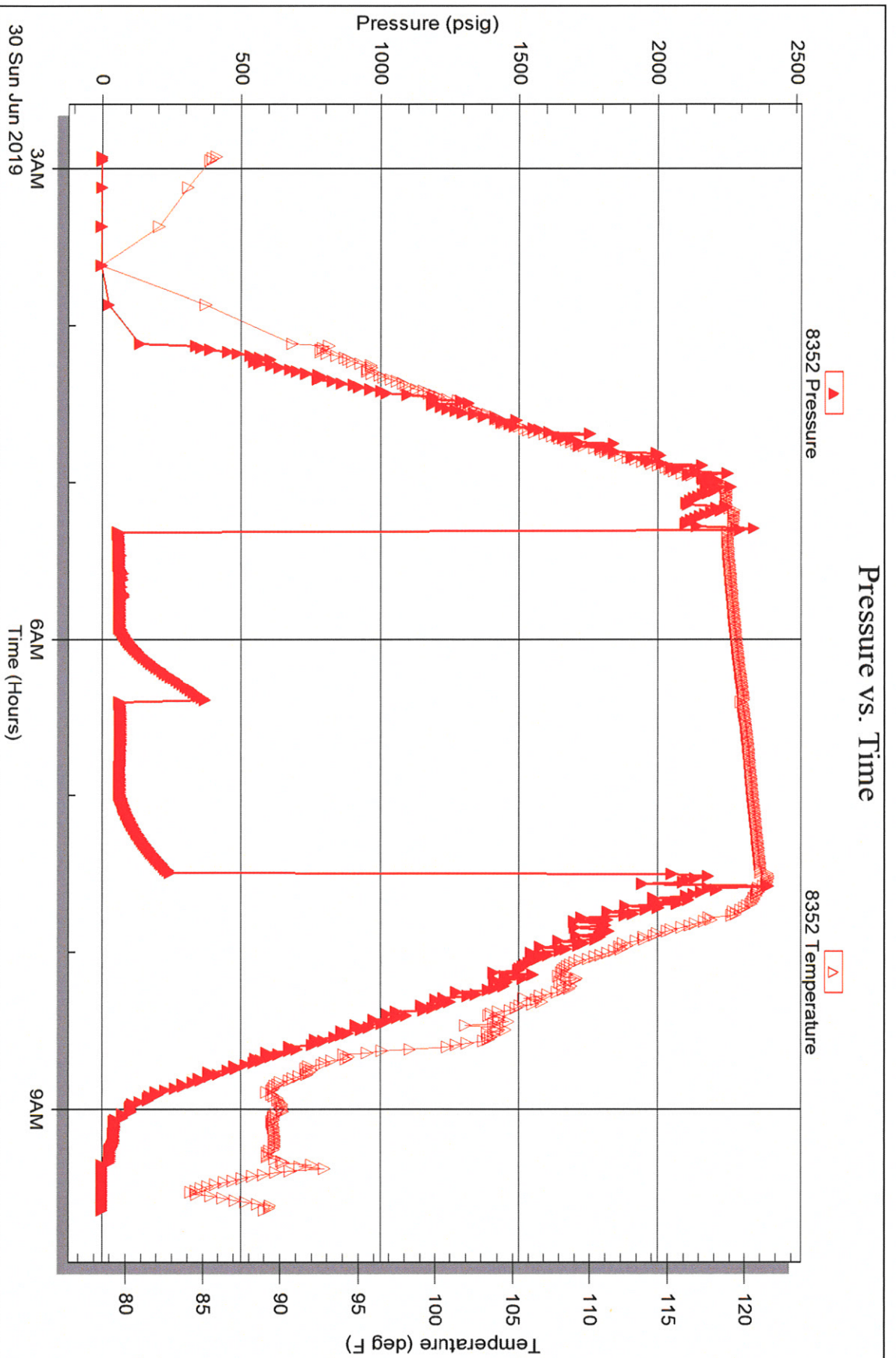
Printed: 2019.07.02 @ 08:43:35

Serial #: 8352

Outside Palomino Petroleum Inc

Hilton-Tokoi #4

DST Test Number: 3

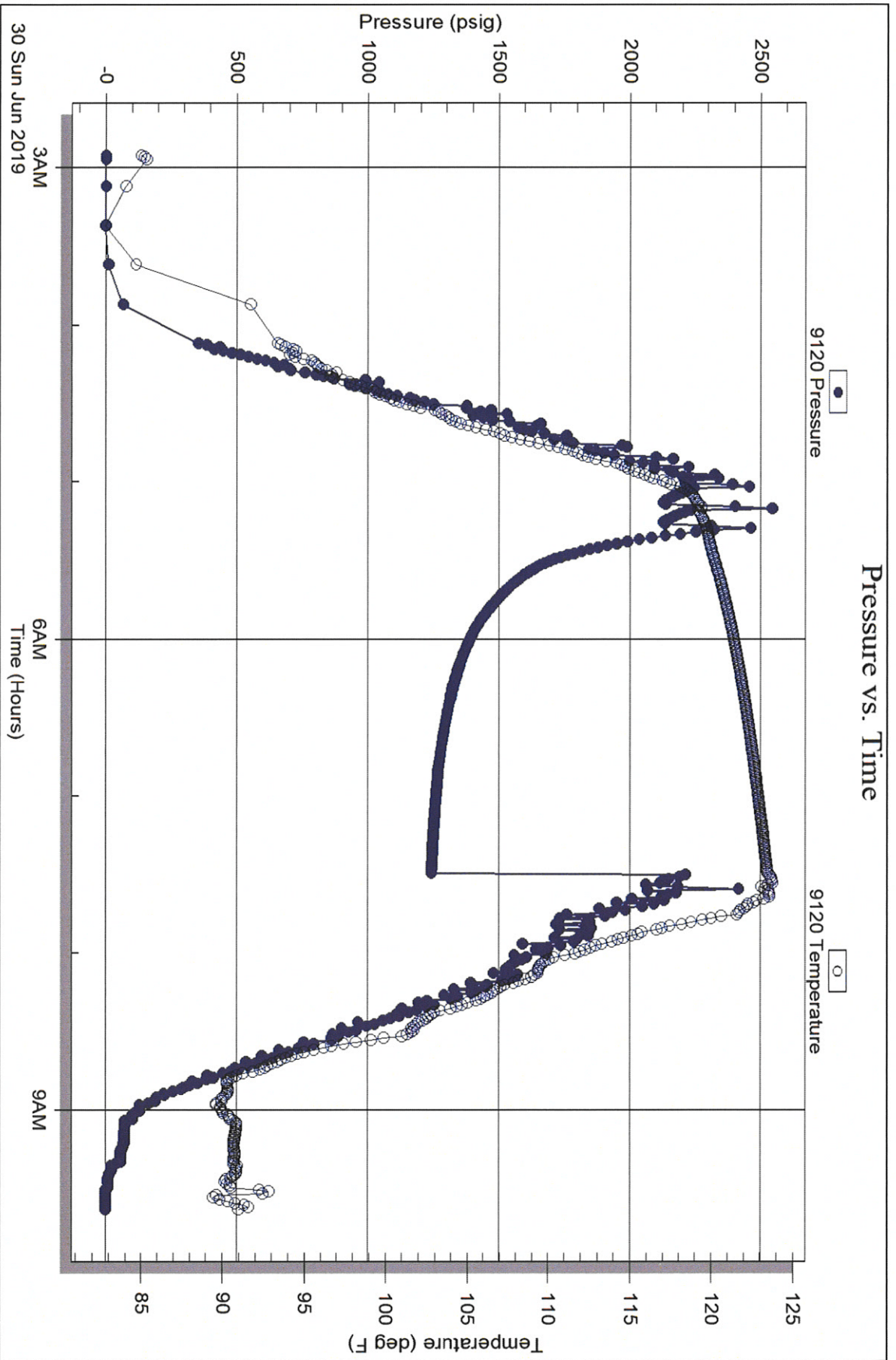


Serial #: 9120

Below (Strat) Petrodecum Inc

Hilton-Tokoi #4

DST Test Number: 3





# TRILOBITE TESTING INC.

1515 Commerce Parkway • Hays, Kansas 67601

## Test Ticket 65959

NO.

Well Name & No. Hilton - 7okin #4 Test No. 1 Date 06/28/2019  
 Company Palominos Petroleum Inc Elevation 2444 KB 2439 GL  
 Address 4924 SE 84th St Newton KS 67114 +8827  
 Co. Rep / Geo. Andrew Stempel Rig W9W#2  
 Location: Sec. 26 Twp 17 Rge. 26 Co. Miss State KS

Interval Tested 4383' - 4398 Zone Tested Mississippi  
 Anchor Length 15' Drill Pipe Run 4266 Mud Wt. 9.3  
 Top Packer Depth 4378' Drill Collars Run 118' Vis 56  
 Bottom Packer Depth 4383' Wt. Pipe Run - WL 8.0  
 Total Depth 4398' Chlorides 4400 ppm System LCM 2H

Blow Description 17-9 Weak; Built to 3"  
JSA - No Return  
47-9 Weak; Built to 3 1/2"  
75J - No Return

Rec	Feet of	%gas	%oil	%water	%mud
30'	HOCM	40		60	
60'	GO	50	50		
	30' GTP	100			

Rec Total 90' BHT 1240 Gravity 41° API RW - @ - °F Chlorides - ppm

(A) Initial Hydrostatic 2254  Test 1300 T-On Location 18:22  
 (B) First Initial Flow 17  Jars 250 T-Started 18:55  
 (C) First Final Flow 34  Safety Joint 75 T-Open 20:40  
 (D) Initial Shut-In 776  Circ Sub \_\_\_\_\_ T-Pulled 23:40  
 (E) Second Initial Flow 40  Hourly Standby \_\_\_\_\_ T-Out 01:33 06/29/2019  
 (F) Second Final Flow 55  Mileage 17627 110 Comments \_\_\_\_\_  
 (G) Final Shut-In 737  Sampler \_\_\_\_\_  
 (H) Final Hydrostatic 2153  Straddle \_\_\_\_\_

Initial Open 30  Shale Packer \_\_\_\_\_  EM Tool \_\_\_\_\_  
 Initial Shut-In 30  Extra Packer \_\_\_\_\_  Ruined Shale Packer \_\_\_\_\_  
 Final Flow 60  Extra Recorder \_\_\_\_\_  Ruined Packer \_\_\_\_\_  
 Final Shut-In 60  Day Standby \_\_\_\_\_  Extra Copies \_\_\_\_\_  
 Sub Total 0  Accessibility \_\_\_\_\_ Total 1735  
 Sub Total 1735 MP/DST Disc't \_\_\_\_\_

Approved By \_\_\_\_\_ Our Representative James J. Seal Thanks!  
 TriLOBITE Testing Inc. shall not be liable for damaged of any kind of the property or personnel of the one for whom a test is made, or for any loss suffered or sustained, directly or indirectly, through the use of its equipment, or its statements or opinion concerning the results of any test, tools lost or damaged in the hole shall be paid for at cost by the party for whom the test is made.

785-259-0056





# TRIOBITE TESTING INC.

1515 Commerce Parkway • Hays, Kansas 67601

## Test Ticket 65960

NO.

Well Name & No. Hilton-Tokio #4 Test No. 2 Date 06/29/2019  
 Company Palomino Petroleum Inc Elevation 2444 KB 2439 GL  
 Address 4924 SE 84th St Newton KS 67114 + 8827  
 Co. Rep / Geo. Andrew Stenzel Rig WW #2  
 Location: Sec. 26 Twp 17S Rge. 26W Co. Ness State KS

Interval Tested 4399' - 4417' Zone Tested Mississippi  
 Anchor Length 18' Drill Pipe Run 4260 Mud Wt. 9.35  
 Top Packer Depth 4394' Drill Collars Run 118' Vis 58  
 Bottom Packer Depth 4399' Wt. Pipe Run - WL 8.6  
 Total Depth 4417' Chlorides 6000 ppm System LCM 2#

Blow Description IF - Weak; Built to 2 1/4"  
IST - No Return  
EF - Weak; Built to 3/4"; Flushed no help  
FST - No Return

Rec	Feet of	%gas	%oil	%water	%mud
70'	OSM W			60%	40%

Rec Total 70' BHT 121° Gravity - API RW 0.78 @ 100° F Chlorides 66000 ppm

(A) Initial Hydrostatic <u>2269</u>	<input checked="" type="checkbox"/> Test <u>1300</u>	T-On Location <u>07:30</u>
(B) First Initial Flow <u>18</u>	<input checked="" type="checkbox"/> Jars <u>250</u>	T-Started <u>07:53</u>
(C) First Final Flow <u>37</u>	<input checked="" type="checkbox"/> Safety Joint <u>75</u>	T-Open <u>10:15</u>
(D) Initial Shut-In <u>941</u>	<input type="checkbox"/> Circ Sub	T-Pulled <u>12:15</u>
(E) Second Initial Flow <u>42</u>	<input type="checkbox"/> Hourly Standby	T-Out <u>14:19</u>
(F) Second Final Flow <u>57</u>	<input checked="" type="checkbox"/> Mileage <u>176 RT</u> 110	Comments
(G) Final Shut-In <u>899</u>	<input type="checkbox"/> Sampler	
(H) Final Hydrostatic <u>2197</u>	<input type="checkbox"/> Straddle	

Initial Open <u>30</u>	<input type="checkbox"/> Shale Packer	<input type="checkbox"/> EM Tool
Initial Shut-In <u>30</u>	<input type="checkbox"/> Extra Packer	<input type="checkbox"/> Ruined Shale Packer
Final Flow <u>30</u>	<input type="checkbox"/> Extra Recorder	<input type="checkbox"/> Ruined Packer
Final Shut-In <u>30</u>	<input type="checkbox"/> Day Standby	<input type="checkbox"/> Extra Copies
	<input type="checkbox"/> Accessibility	Sub Total <u>0</u>
	Sub Total <u>1735</u>	Total <u>1735</u>

Approved By \_\_\_\_\_ Our Representative Spencer J. Stahl *Thanks!*

Triobite Testing Inc. shall not be liable for damaged of any kind of the property or personnel of the one for whom a test is made, or for any loss suffered or sustained, directly or indirectly, through the use of its equipment, or its statements or opinion concerning the results of any test, tools lost or damaged in the hole shall be paid for at cost by the party for whom the test is made.

785-259-0056



# TRILOBITE TESTING INC.

1515 Commerce Parkway • Hays, Kansas 67601

## Test Ticket 65961

NO.

Well Name & No. Hilton - Tokio #4 Test No. 3 Date 06/30/2019  
 Company Palomino Petroleum Elevation 2444 KB 2439 GL  
 Address 4924 SE 847h 57 Newton Ks 67114 +8827  
 Co. Rep / Geo. Andrew Stempel Rig 9W9W #2  
 Location: Sec. 26 Twp 17s Rge. 26w Co. 9ess State Ks

Interval Tested 4300' - 4387' Zone Tested Cong.  
 Anchor Length 87' 103' tail Drill Pipe Run 4168' Mud Wt. 9.35  
 Top Packer Depth 4300' Drill Collars Run 118 Vis 56  
 Bottom Packer Depth 4387' Wt. Pipe Run \_\_\_\_\_ WL 9.6  
 Total Depth 4490' Chlorides 5000 ppm System LCM 2#

Blow Description 77- Wash; Built to 1/2"  
75D - No Return  
77 - Wash Surface  
75D - No Return

Rec	Feet of	%gas	%oil	%water	%mud
<u>20'</u>	<u>OSM</u>			<u>100%</u>	
Rec _____	Feet of _____	%gas _____	%oil _____	%water _____	%mud _____
Rec _____	Feet of _____	%gas _____	%oil _____	%water _____	%mud _____
Rec _____	Feet of _____	%gas _____	%oil _____	%water _____	%mud _____
Rec _____	Feet of _____	%gas _____	%oil _____	%water _____	%mud _____

Rec Total 20' BHT 120° Gravity \_\_\_\_\_ API RW \_\_\_\_\_ @ \_\_\_\_\_ °F Chlorides \_\_\_\_\_ ppm

(A) Initial Hydrostatic <u>2298</u>	<input checked="" type="checkbox"/> Test <u>1300</u>	T-On Location <u>02:20</u>
(B) First Initial Flow <u>53</u>	<input checked="" type="checkbox"/> Jars <u>250</u>	T-Started <u>02:55</u>
(C) First Final Flow <u>60</u>	<input checked="" type="checkbox"/> Safety Joint <u>75</u>	T-Open <u>05:15</u>
(D) Initial Shut-In <u>370</u>	<input type="checkbox"/> Circ Sub _____	T-Pulled <u>07:15</u>
(E) Second Initial Flow <u>60</u>	<input type="checkbox"/> Hourly Standby _____	T-Out <u>09:35</u>
(F) Second Final Flow <u>60</u>	<input checked="" type="checkbox"/> Mileage <u>17627</u> 110	Comments _____
(G) Final Shut-In <u>241</u>	<input type="checkbox"/> Sampler _____	
(H) Final Hydrostatic <u>2195</u>	<input checked="" type="checkbox"/> Straddle <u>600</u>	

Initial Open <u>30</u>	<input type="checkbox"/> Shale Packer _____	<input type="checkbox"/> EM Tool _____
Initial Shut-In <u>30</u>	<input type="checkbox"/> Extra Packer _____	<input type="checkbox"/> Ruined Shale Packer _____
Final Flow <u>30</u>	<input type="checkbox"/> Extra Recorder _____	<input checked="" type="checkbox"/> Ruined Packer <u>320</u>
Final Shut-In <u>30</u>	<input type="checkbox"/> Day Standby _____	<input type="checkbox"/> Extra Copies _____
	<input type="checkbox"/> Accessibility _____	Sub Total <u>320</u>
	Sub Total <u>2335</u>	Total <u>2655</u>
		MP/DST Disc't _____

Approved By \_\_\_\_\_ Our Representative \_\_\_\_\_  
 Trilobite Testing Inc. shall not be liable for damaged of any kind of the property or personnel of the one for whom a test is made, or for any loss suffered or sustained, directly or indirectly, through the use of its equipment, or its statements or opinion concerning the results of any test, tools lost or damaged in the hole shall be paid for at cost by the party for whom the test is made.