

OPERATOR

Company: Charles N. Griffin
Address: PO Box 347
Pratt, KS 67124

Contact Geologist:
Contact Phone Nbr:

Well Name: #3 Addie
Location: Section 28-29S-15W
Pool:
State: Kansas

API: 15-151-22488
Field: Croft
Country: USA

Scale 1:240 Imperial

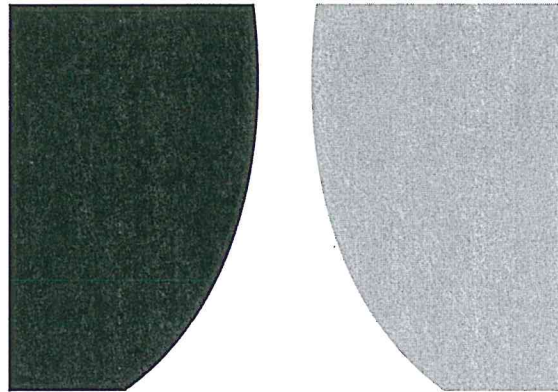
Well Name: #3 Addie
Surface Location: Section 28-29S-15W
Bottom Location:
API: 15-151-22488
License Number:
Spud Date: 4/19/2019 Time: 8:00 PM
Region: Pratt County
Drilling Completed: 4/24/2019 Time: 4:45 AM
Surface Coordinates: 1850' FSL / 1450' FWL
Bottom Hole Coordinates:
Ground Elevation: 1987.00ft
K.B. Elevation: 1998.00ft
Logged Interval: 3800.00ft To: 4810.00ft
Total Depth: 4810.00ft
Formation:
Drilling Fluid Type: Chemical (MudCo)

Drilling Fluid Type: Chemical (Mudoc)

SURFACE CO-ORDINATES

Well Type: Vertical
Longitude: Latitude:
N/S Co-ord: 1850' FSL / 1450' FWL
E/W Co-ord:

LOGGED BY



TERRATECH

ENERGY SERVICE, LLC

Company: TerraTech Energy Service LLC.
Address: 1632 S. West St. Suite 12
Wichita, KS 67208

Phone Nbr: 316-617-3959
Logged By: Geologist

Name: Bruce Reed

CONTRACTOR

Contractor:	WW Drilling	
Rig #:	14	
Rig Type:	mud rotary	
Spud Date:	4/19/2019	Time: 8:00 PM
TD Date:	4/24/2019	Time: 4:45 AM
Rig Release:	4/25/2019	Time: 10:45 AM

ELEVATIONS

K.B. Elevation:	1998.00ft	Ground Elevation:	1987.00ft
K.B. to Ground:	11.00ft		

NOTES

Surface Casing: 8-5/8" at 267'
Production Casing: 5-1/2" at 4795'

Daily Penetration: 04/19/19 Spud @ 8:00 PM
04/20/19 267'

Production Casing: 5-1/2" at 4795'

Daily Penetration: 04/19/19 Spud @ 8:00 PM
04/20/19 267'
04/21/19 1693'
04/22/19 2839'
04/23/19 3901'
04/24/19 4810' RTD @ 4:45 AM
04/25/19 4810' Rig released @ 10:45 AM

FORMATION TOPS

Formation	Sample Top	Datum	Log Top	Datum	Comparison*
Heebner	3908'	-1910	3908'	-1910	+1
Brown Lime	4071'	-2073	4073'	-2075	-2
Lansing	4087'	-2089	4087'	-2089	-2
Stark	4351'	-2353	4354'	-2356	-5
Base KC	4482'	-2484	4485'	-2487	-12
Pawnee	4548'	-2550	4551'	-2553	-16
Cherokee	4586'	-2588	4589'	-2591	-19
Mississippi	4631'	-2633	4631'	-2633	-39
Viola	4674'	-2676	4676'	-2678	-24

*Griffin Management, #2 Addie, 1190' FSL & 790'FWL Section 28-29S-15W, Pratt County, Kansas

ROCK TYPES

 Cht	 Lmst fw7>	 Carbon Sh
 Dolprim	 shale, gry	 Ss

OTHER SYMBOLS

INTERVALS

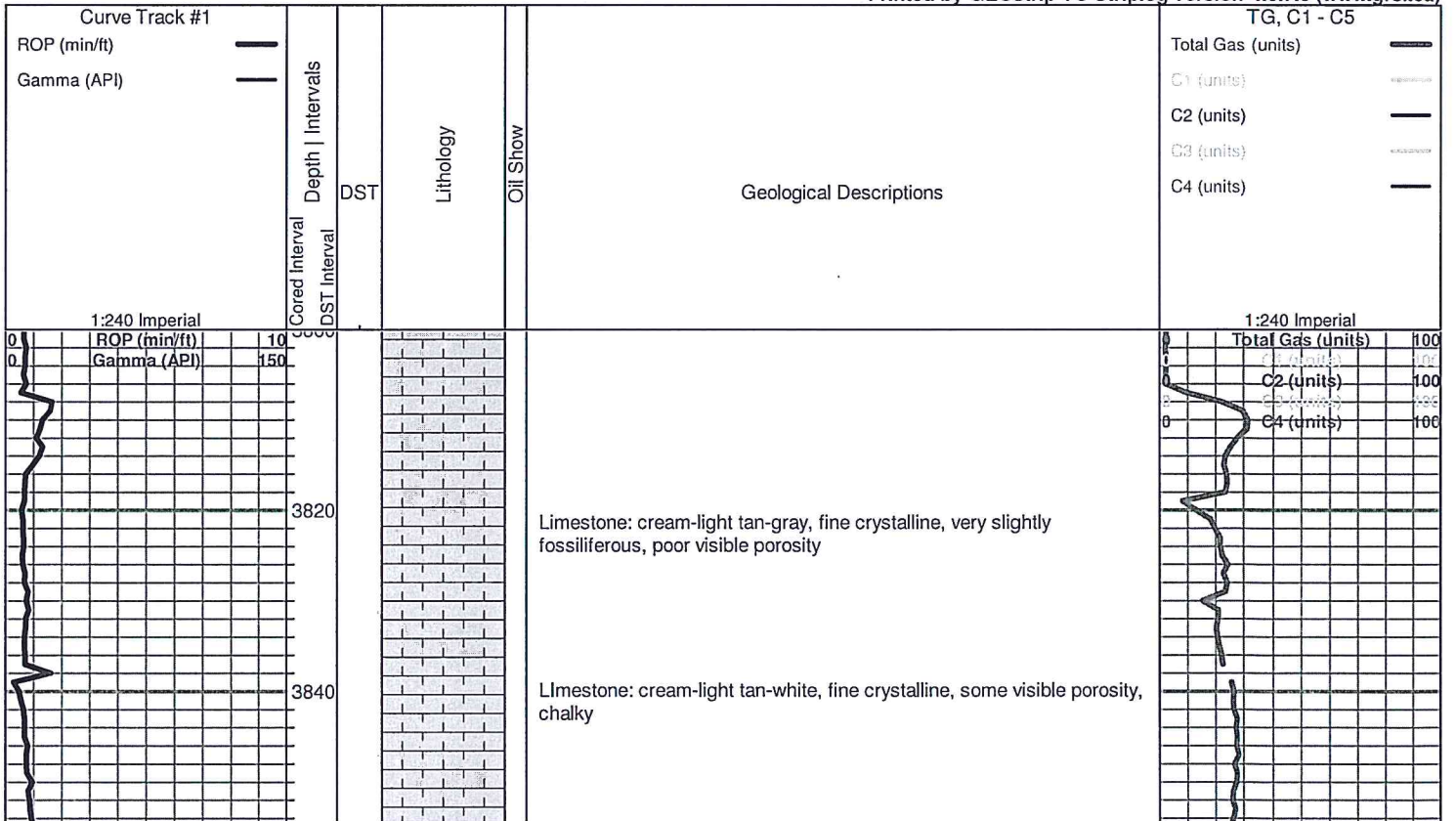
- Core
- DST

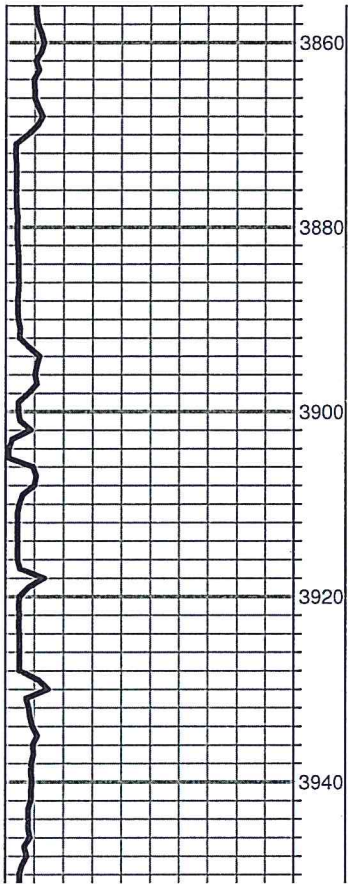
Oil Show

- Good Show
- ⊙ Fair Show
- ⦿ Poor Show
- Spotted or Trace
- Questionable Stn
- D Dead Oil Stn
- Fluorescence
- * Gas

DST

- DST Int
- DST alt
- Core
- || tail pipe





Limestone: as above

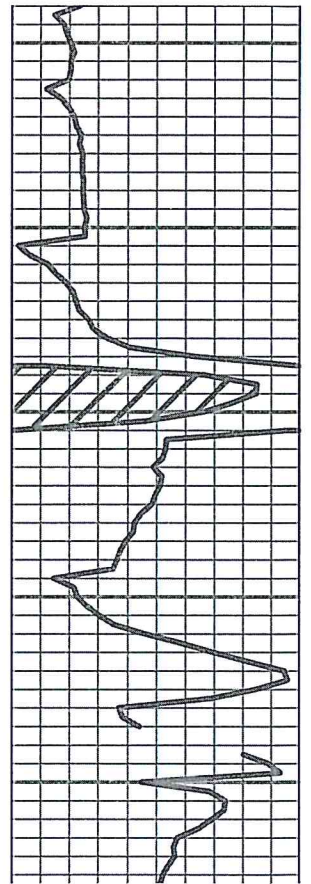
Shale: gray-green-brown

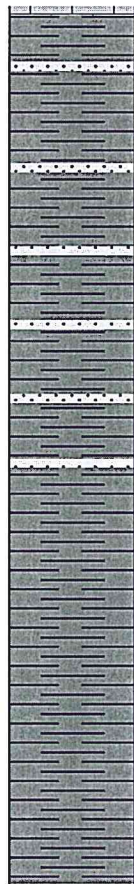
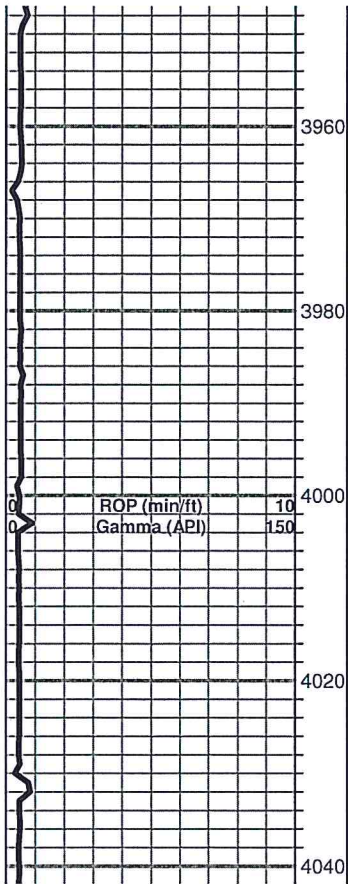
Shale: dark gray-brown-black, few pieces light tan, dense limestone

Heebner 3908' (-1910)

* Shale: black, carbonaceous, fissile, bleeds gas, trace dense, brown, limestone

Limestone: cream-white, fine crystalline, sub chalky





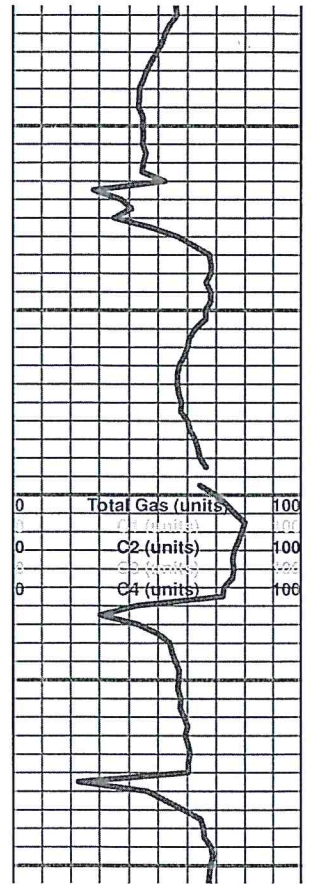
Shale: light gray-brown, silty/sandy

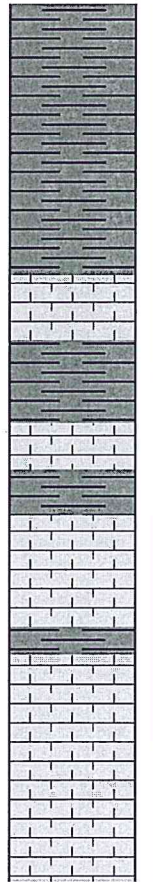
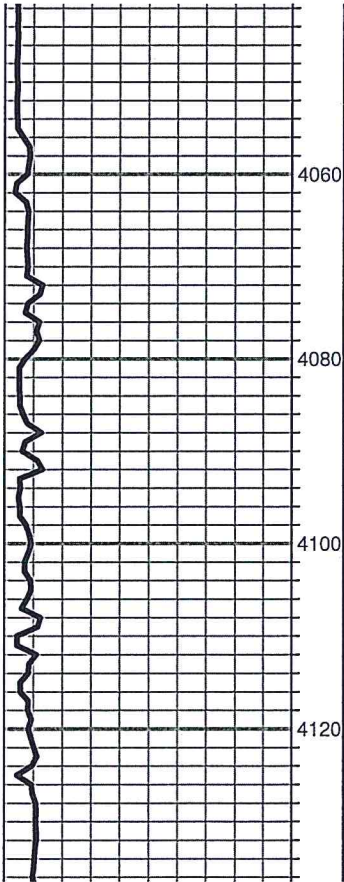
Shale: brown-gray-green, silty/sandy

* Shale: dark gray-brown-black, sandy, few pieces bleed gas

Shale: as above, less sandy

Shale: as above, trace very fine grained sandstone





Shale and sandstone as above

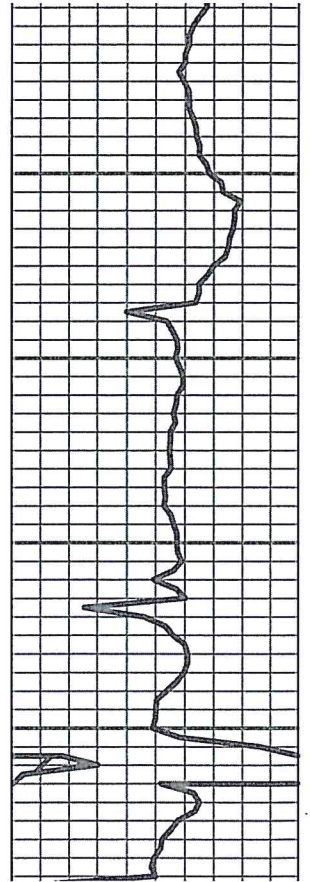
Brown Lime 4071' (-2073)

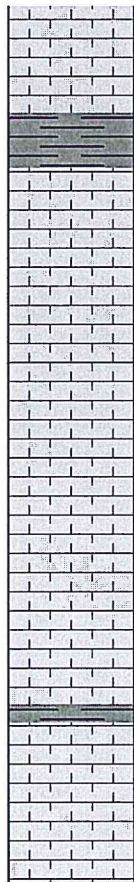
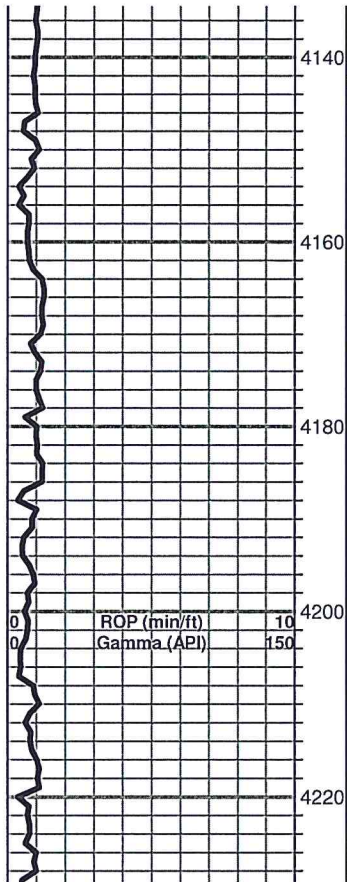
Limestone: tan-brown, fine crystalline, poor visible porosity, sub shaley

Lansing 4087' (-2089)

Limestone: light tan-cream, fine crystalline, dense, sub shaley

Limestone: more cream, fine crystalline, poor to no visible porosity, dense





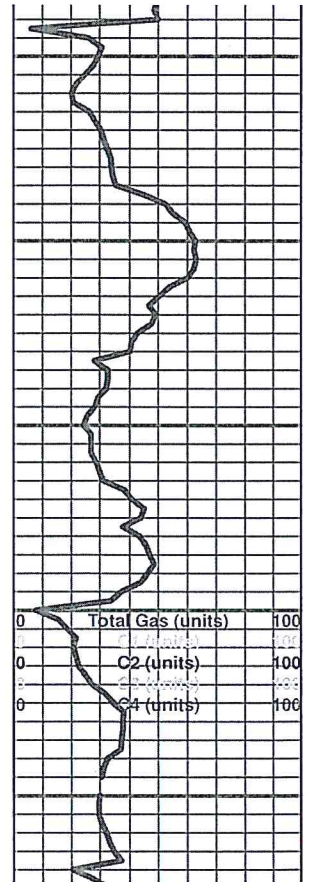
Limestone: cream-white, fine crystalline, dense

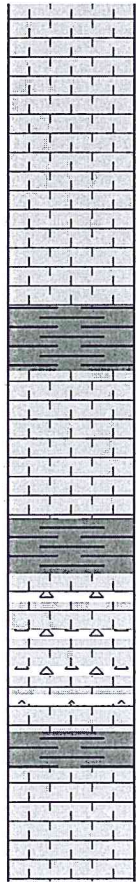
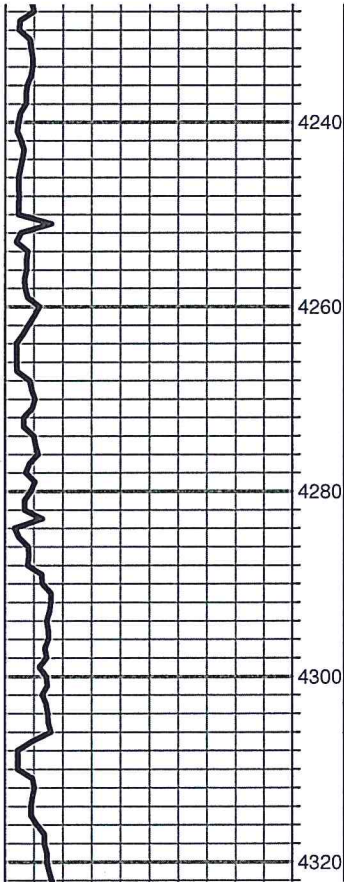
Limestone: cream-light tan-white, fine crystalline, very slightly fossiliferous, poor to fair visible porosity, very faint odor, no show

Limestone: cream-white, fine crystalline, sub chalky

Limestone: cream-white, fine crystalline, poor visible porosity, dense, sub chalky

Limestone: cream, fine crystalline, poor to no visible porosity, trace chalky





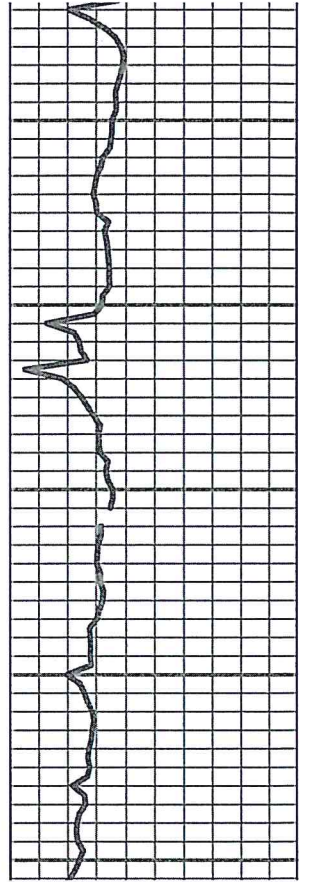
Limestone: cream-gray, fine crystalline, poor to no visible porosity, dense

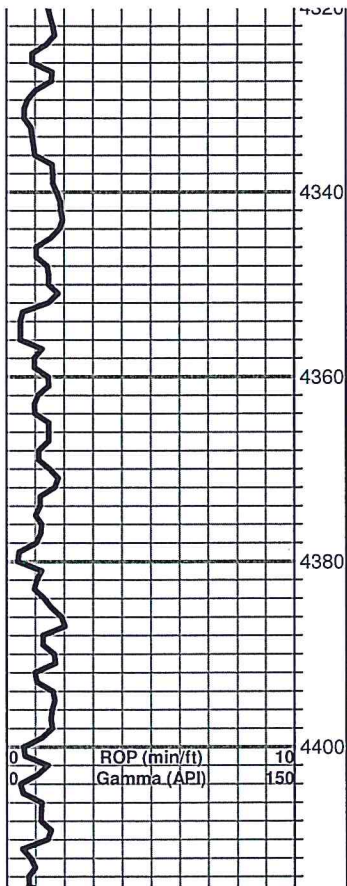
Limestone: as above

Limestone: light tan-cream-light gray, fine crystalline to fossiliferous, dense

Limestone: cream-light tan, fine to slightly medium crystalline, poor visible porosity, dense, sub cherty

Limestone: cream-medium tan, fine crystalline, poor to no visible porosity, dense





porosity, dense

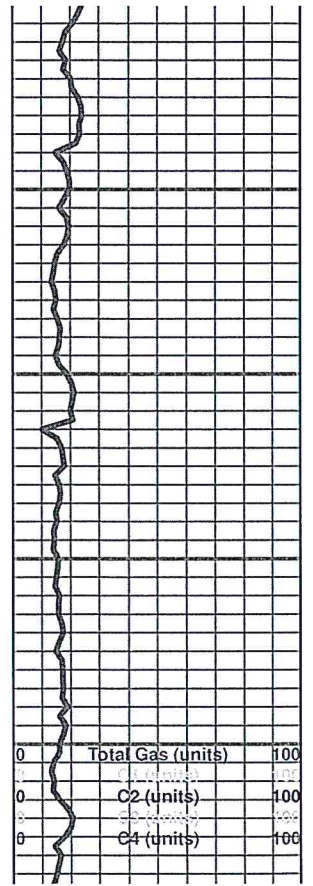
Limestone: more cream, fine crystalline, slightly fossiliferous, dense

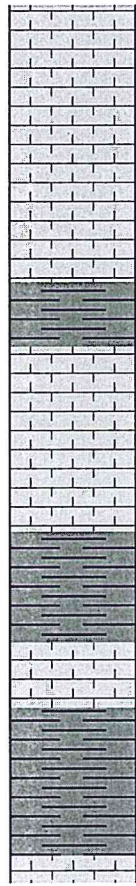
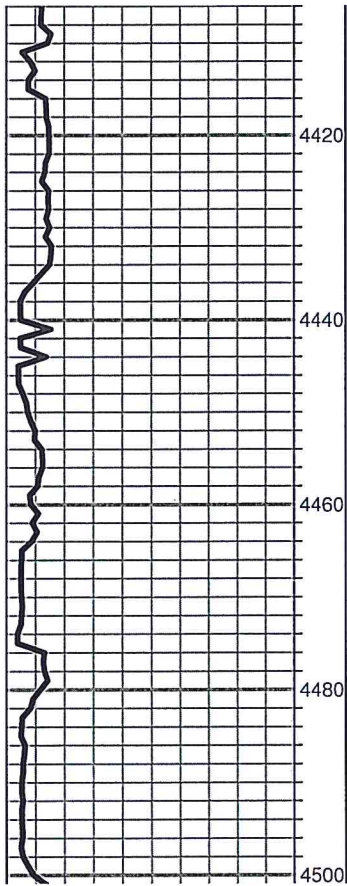
Stark 4351' (-2353)

Limestone: cream-light tan-white, fine crystalline, slightly fossiliferous, sub chalky, some dark gray, soft shale

Limestone: as above

Shale: black





Limestone: cream-white, fine crystalline, sub chalky, dense

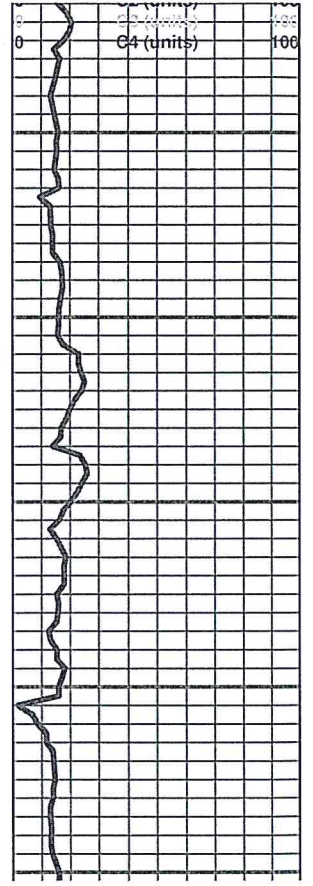
Shale: dark-medium gray-green

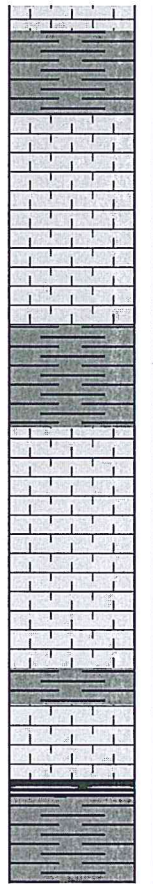
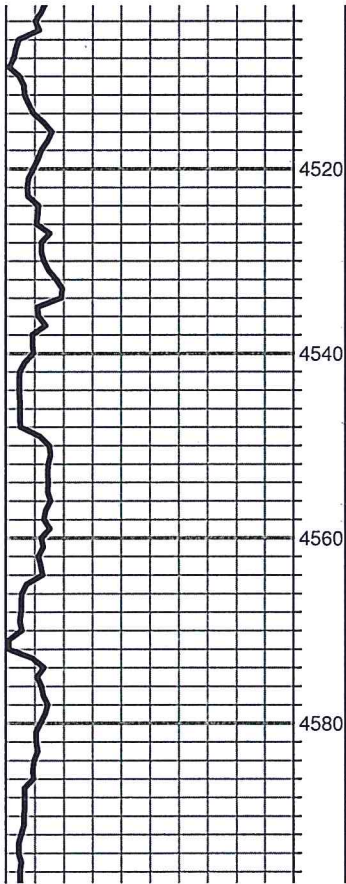
Limestone: cream-gray, fine crystalline, poor to no visible porosity

Limestone: gray, dense with flood gray-medium gray-black shale

B/KC 4482' (-2484)

Flood vari-colored shale with dense gray-brown limestone





Limestone: cream-light tan-gray, fine crystalline, slightly fossiliferous, sub chalky, samples carry lots of gray-green shale

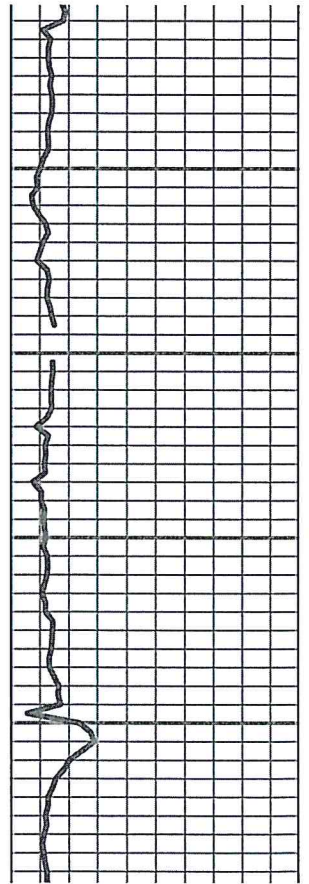
Shale: gray-green

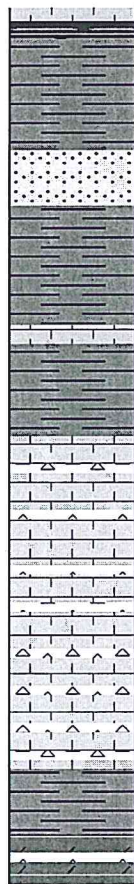
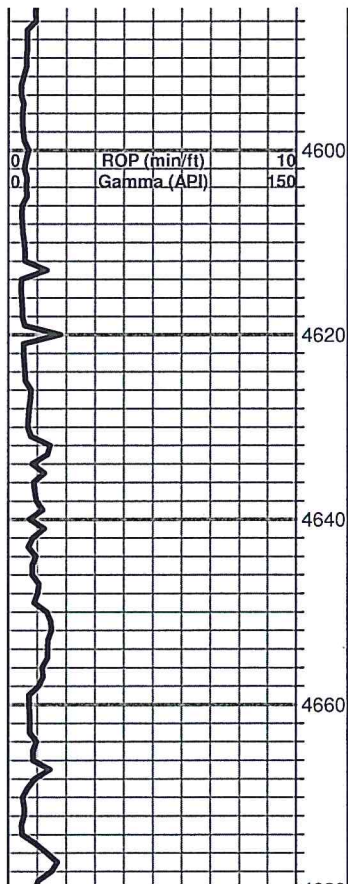
Pawnee 4548' (-2550)

Limestone: cream-white-light tan, fine crystalline, poor to no visible porosity, dense

Limestone: cream-light tan, fine to micro-crystalline, no visible porosity, sub shaley

Cherokee 4586' (-2588)





ONEFOUR 4500 (-2500)

Shale: dark-medium gray-red

Shale: pale green-gray, few fine grained sandstone clusters, no shows

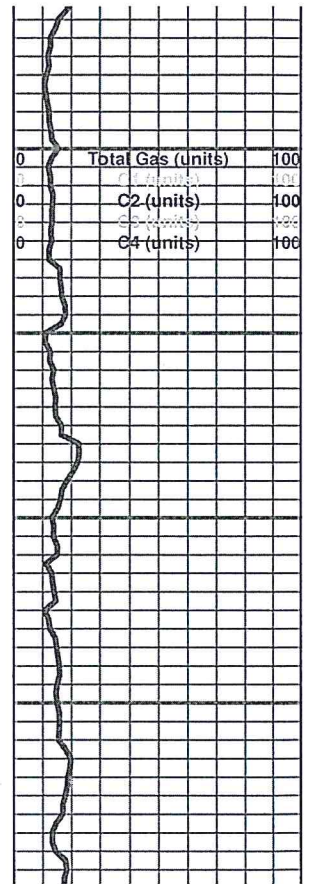
Mississippi 4631' (-2633)

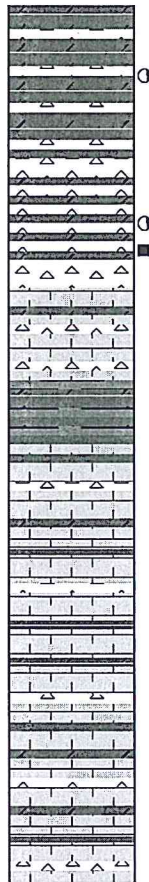
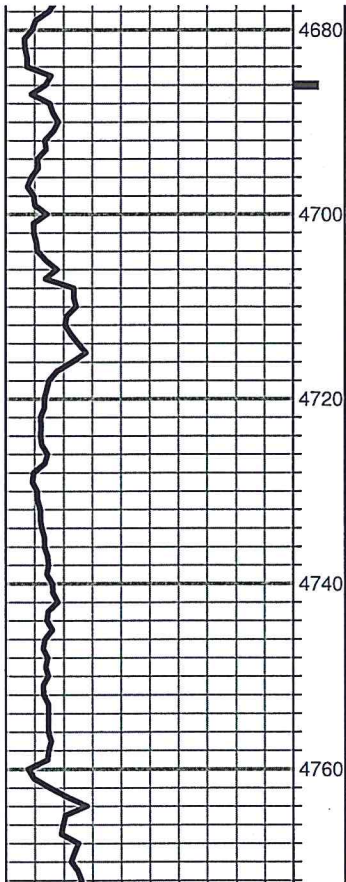
Limestone: cream-light tan, fine crystalline, dense, Chert: mostly vitreous, few pieces weathered, black edge stain, no odor or show free oil

Cherty limestone: as above

Shale: pale green

Viola 4674' (-2676)





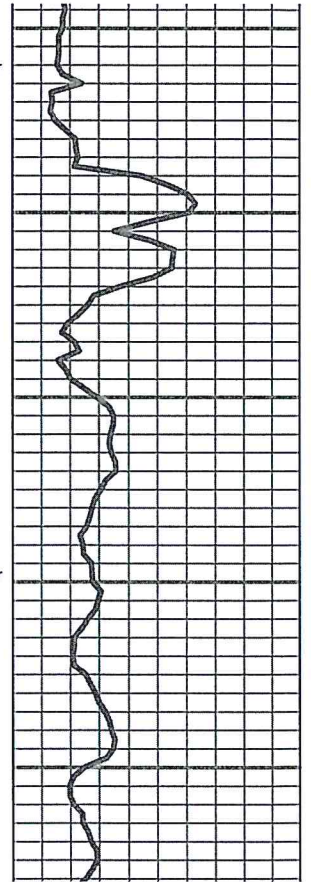
Circulated at 4686' Dolomite: dark brown, fine crystalline, sucrosic, poor inter-crystalline porosity, no odor, few pieces show oil, scattered white-cream vitreous chert

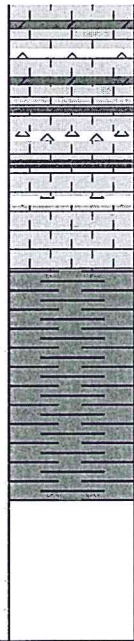
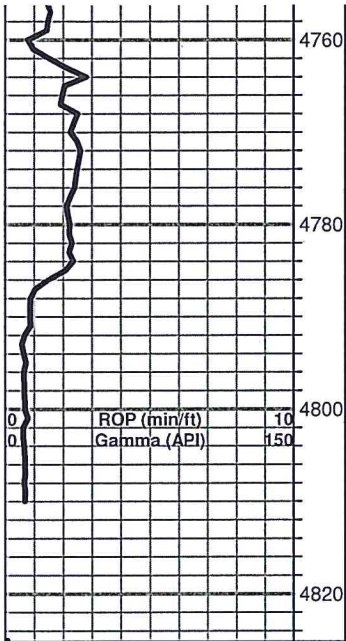
Dolomite: cream-light tan, fine crystalline, sucrosic, most pieces look tite, some white, vitreous chert, faint odor in fresh, some bright yellow fluorescence, slight showfree oil

Shales and dolomitic limestone: cream-light tan, fine crystalline, lots of vitreous, opaque chert, no shows

Dolomitic limestone: light tan-white, fine crystalline, some pieces appear sandy, lots of chert, no shows

Cherty dolomitic limestone: cream, barren





Cherty dolomitic limestone: cream, barren

Cherty dolomitic limestone: cream-white, barren

Simpson 4785' (-2787)

Flood Simpson type shale

