



DRILL STEM TEST REPORT

Prepared For: **Damar Resources Inc**

PO BoxX70
Hays KS 67601+0070

ATTN: Roger Moses

Schmeid Ranch #1

4-12s-17w Ellis,KS

Start Date: 2019.07.27 @ 22:13:00

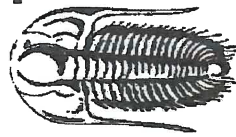
End Date: 2019.07.28 @ 04:03:00

Job Ticket #: 65976 DST #: 1

Trilobite Testing, Inc

1515 Commerce Parkway Hays, KS 67601

ph: 785-625-4778 fax: 785-625-5620



TRIOBITE TESTING, INC

DRILL STEM TEST REPORT

Damar Resources Inc
 PO BoxX 70
 Hays KS 67601+0070
 ATTN: Roger Moses

4-12s-17w Ellis, KS

Schmeid Ranch #1

Job Ticket: 65976 DST#: 1

Test Start: 2019.07.27 @ 22:13:00

GENERAL INFORMATION:

Formation: **LKC G**
 Deviated: No Whipstock: ft (KB)
 Time Tool Opened: 00:41:15
 Time Test Ended: 04:03:00
 Interval: **3437.00 ft (KB) To 3460.00 ft (KB) (TVD)**
 Total Depth: 3757.00 ft (KB) (TVD)
 Hole Diameter: 7.88 inchesHole Condition: Fair

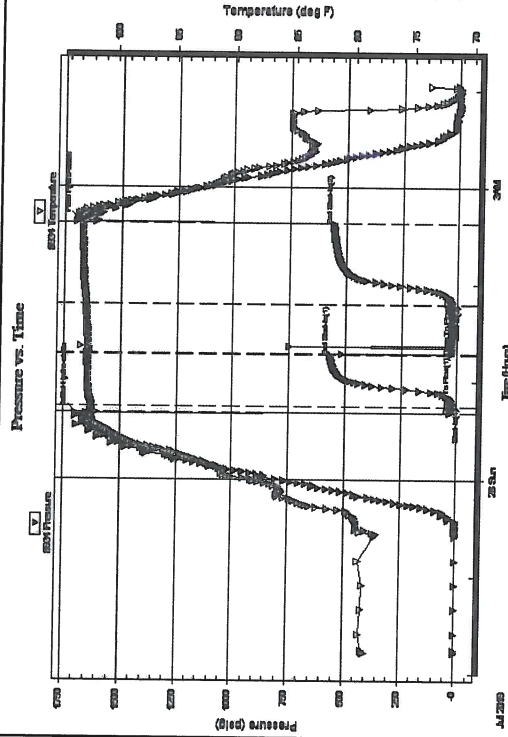
Test Type: Conventional Straddle (Initial)
 Tester: Spencer J Staab
 Unit No: 84
 Reference Elevations: 2117.00 ft (KB)
 2112.00 ft (CF)
 KB to GR/CF: 5.00 ft

Serial #: 8934

Press@RunDepth: 22.91 psig @ 3438.00 ft (KB)
 Start Date: 2019.07.27 End Date:
 Start Time: 22:13:15 End Time:

Capacity: 8000.00 psig
 Last Calib.: 2019.07.28
 Time On Btm: 2019.07.28 @ 00:41:00
 Time Off Btm: 2019.07.28 @ 02:39:30

TEST COMMENT: 5-IF-Weak Surface
 30-ISI-No Return
 30-FF-No Blow; Flushed; No Help
 45-FSI-No Return



PRESSURE SUMMARY

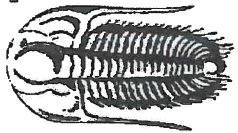
Time (Min.)	Pressure (psig)	Temp (deg F)	Annotation
0	1697.67	102.42	Initial Hydro-static
1	29.58	101.55	Open To Flow (1)
4	21.42	101.93	Shut-In(1)
37	568.58	102.34	End Shut-In(1)
37	27.30	102.19	Open To Flow (2)
67	22.91	102.43	Shut-In(2)
117	555.80	102.80	End Shut-In(2)
119	1690.50	103.13	Final Hydro-static

Recovery

Length (ft)	Description	Volume (bbl)
3.00	Mud 100%M	0.01

Gas Rates

Choke (inches)	Pressure (psig)	Gas Rate (Mcf/d)



TRILOBITE TESTING, INC

DRILL STEM TEST REPORT

Damar Resources Inc

4-12s-17w Ellis,KS

PO BoxX 70

Schmeid Ranch #1

Hays KS 67601+0070

Job Ticket: 65976

DST#: 1

ATTN: Roger Moses

Test Start: 2019.07.27 @ 22:13:00

GENERAL INFORMATION:

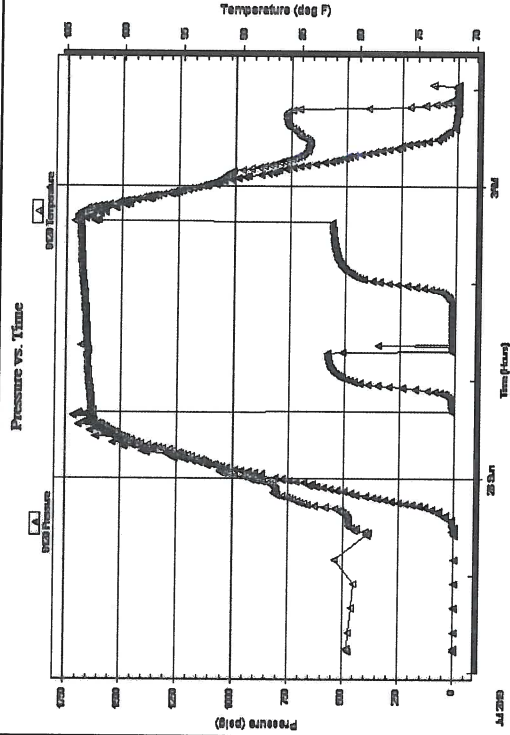
Formation: **LKC G**
 Deviated: No Whipstock: ft (KB)
 Time Tool Opened: 00:41:15
 Time Test Ended: 04:03:00
 Interval: **3437.00 ft (KB) To 3460.00 ft (KB) (TVD)**
 Total Depth: 3757.00 ft (KB) (TVD)
 Hole Diameter: 7.88 inchesHole Condition: Fair
 Test Type: Conventional Straddle (Initial)
 Tester: Spencer J Staab
 Unit No: 84
 Reference Elevations: 2117.00 ft (KB)
 2112.00 ft (CF)
 5.00 ft
 KB to GR/CF:

Serial #: 9120

Press@RunDepth: psig @ 3438.00 ft (KB)
 Start Date: 2019.07.27 End Date:
 Start Time: 22:13:15 End Time:

Capacity: 8000.00 psig
 Last Calib.: 2019.07.28
 Time On Btm: 04:03:00
 Time Off Btm:

TEST COMMENT: 5-IF-Weak Surface
 30-ISI-No Return
 30-FF-No Blow; Flushed; No Help
 45-FSI-No Return



PRESSURE SUMMARY

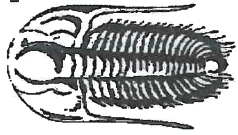
Time (Min.)	Pressure (psig)	Temp (deg F)	Annotation

Recovery

Length (ft)	Description	Volume (bbl)
3.00	Mud 100%M	0.01

Gas Rates

Choke (inches)	Pressure (psig)	Gas Rate (Mcf/d)



**TRILOBITE
TESTING, INC.**

DRILL STEM TEST REPORT

Damar Resources Inc
PO BoxX 70
Hays KS 67601+0070
ATTN: Roger Moses

4-12s-17w Ellis,KS

Schmeid Ranch #1

Job Ticket: 65976 **DST#:** 1
Test Start: 2019.07.27 @ 22:13:00

GENERAL INFORMATION:

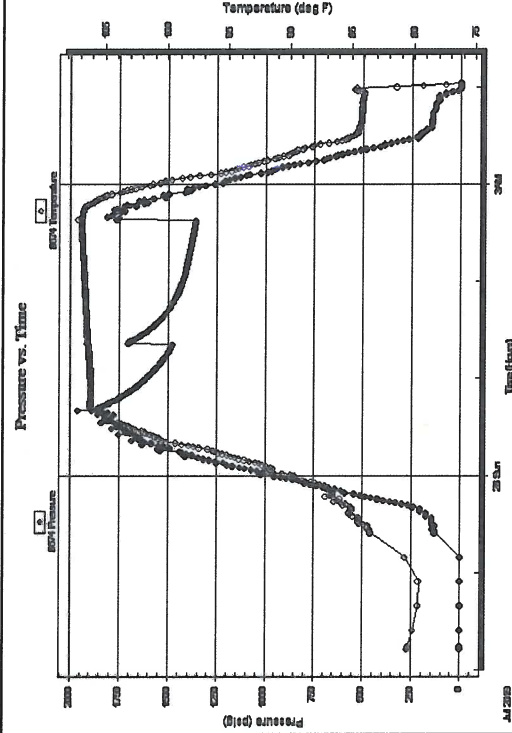
Formation: **LKC G**
 Deviated: No Whipstock: ft (KB)
 Time Tool Opened: 00:41:15
 Time Test Ended: 04:03:00
 Interval: **3437.00 ft (KB) To 3460.00 ft (KB) (TVD)**
 Total Depth: 3757.00 ft (KB) (TVD)
 Hole Diameter: 7.88 inches Hole Condition: Fair
 Test Type: Conventional Straddle (Initial)
 Tester: Spencer J Staab
 Unit No: 84
 Reference Elevations: 2117.00 ft (KB)
 2112.00 ft (CF)
 5.00 ft
 KB to GR/CF:

Serial #: 8674 Below (Straddle)

Press@RunDepth: psig @ 3469.00 ft (KB)
 Start Date: 2019.07.27 End Date:
 Start Time: 22:13:15 End Time:

Capacity: 8000.00 psig
 Last Calib.: 2019.07.28
 Time On Btm: 04:02:45
 Time Off Btm:

TEST COMMENT: 5-IF-Weak Surface
 30-ISI-No Return
 30-FF-No Blow; Flushed; No Help
 45-FSI-No Return



PRESSURE SUMMARY

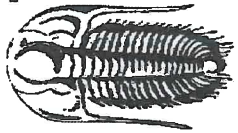
Time (Min.)	Pressure (psig)	Temp (deg F)	Annotation

Recovery

Length (ft)	Description	Volume (bbl)
3.00	Mud 100%M	0.01

Gas Rates

Choke (inches)	Pressure (psig)	Gas Rate (Mcf/d)



**TRILOBITE
TESTING, INC**

DRILL STEM TEST REPORT

TOOL DIAGRAM

Damar Resources Inc

4-12s-17w Ellis,KS

PO BoxX 70

Schmeid Ranch #1

Hays KS 67601+0070

Job Ticket: 65976

DST#: 1

ATTN: Roger Moses

Test Start: 2019.07.27 @ 22:13:00

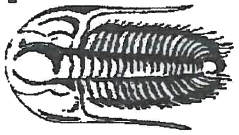
Tool Information

Drill Pipe:	Length: 3292.00 ft	Diameter: 3.82 inches	Volume: 46.67 bbl	Tool Weight: 2500.00 lb
Heavy Wt. Pipe:	ft	Diameter: 2.75 inches	Volume: - bbl	Weight set on Packer: 25000.00 lb
Drill Collar:	Length: 120.00 ft	Diameter: 2.25 inches	Volume: 0.59 bbl	Weight to Pull Loose: 62000.00 lb
Drill Pipe Above KB:	4.00 ft	Total Volume: - bbl		Tool Chased ft
Depth to Top Packer:	3437.00 ft	String Weight: Initial 53000.00 lb		
Depth to Bottom Packer:	3460.00 ft	Final 53000.00 lb		
Interval betw een Packers:	23.00 ft			
Tool Length:	349.00 ft			
Number of Packers:	1	Diameter: 6.75 inches		

Tool Comments:

Tool Description	Length (ft)	Serial No.	Position	Depth (ft)	Accum. Lengths
Change Over Sub	1.00			3409.00	
Shut In Tool	5.00			3414.00	
Hydraulic tool	5.00			3419.00	
Jars	5.00			3424.00	
Safety Joint	3.00			3427.00	
Packer	5.00			3432.00	29.00 Bottom Of Top Packer
Packer	5.00			3437.00	
Stubb	1.00			3438.00	
Recorder	0.00	8934	Inside	3438.00	
Recorder	0.00	9120	Outside	3438.00	
Perforations	17.00			3455.00	
Blank Off Sub	1.00			3456.00	
Top S. Packer	4.00			3460.00	
Packer - Shale	0.00			3460.00	23.00 Tool Interval
Packer	0.00			3460.00	
Stubb	1.00			3461.00	
Perforations	7.00			3468.00	
Change Over Sub	1.00			3469.00	
Recorder	0.00	8674	Below	3469.00	
Drill Pipe	284.00			3753.00	
Change Over Sub	1.00			3754.00	
Bullnose	3.00			3757.00	297.00 Bottom Packers & Anchor

Total Tool Length: 349.00



**TRILOBITE
TESTING, INC.**

DRILL STEM TEST REPORT

FLUID SUMMARY

Damar Resources Inc

4-12s-17w Ellis,KS

PO BoxX 70

Schmeid Ranch #1

Hays KS 67601+0070

Job Ticket: 65976

DST#:1

ATTN: Roger Moses

Test Start: 2019.07.27 @ 22:13:00

Mud and Cushion Information

Mud Type: Gel Chem
Mud Weight: 9.00 lb/gal
Viscosity: 51.00 sec/qt
Water Loss: 8.79 in³
Resistivity: ohm.m
Salinity: 4000.00 ppm
Filter Cake: inches

Cushion Type:
Cushion Length: ft
Cushion Volume: bbl
Gas Cushion Type: psig
Gas Cushion Pressure:

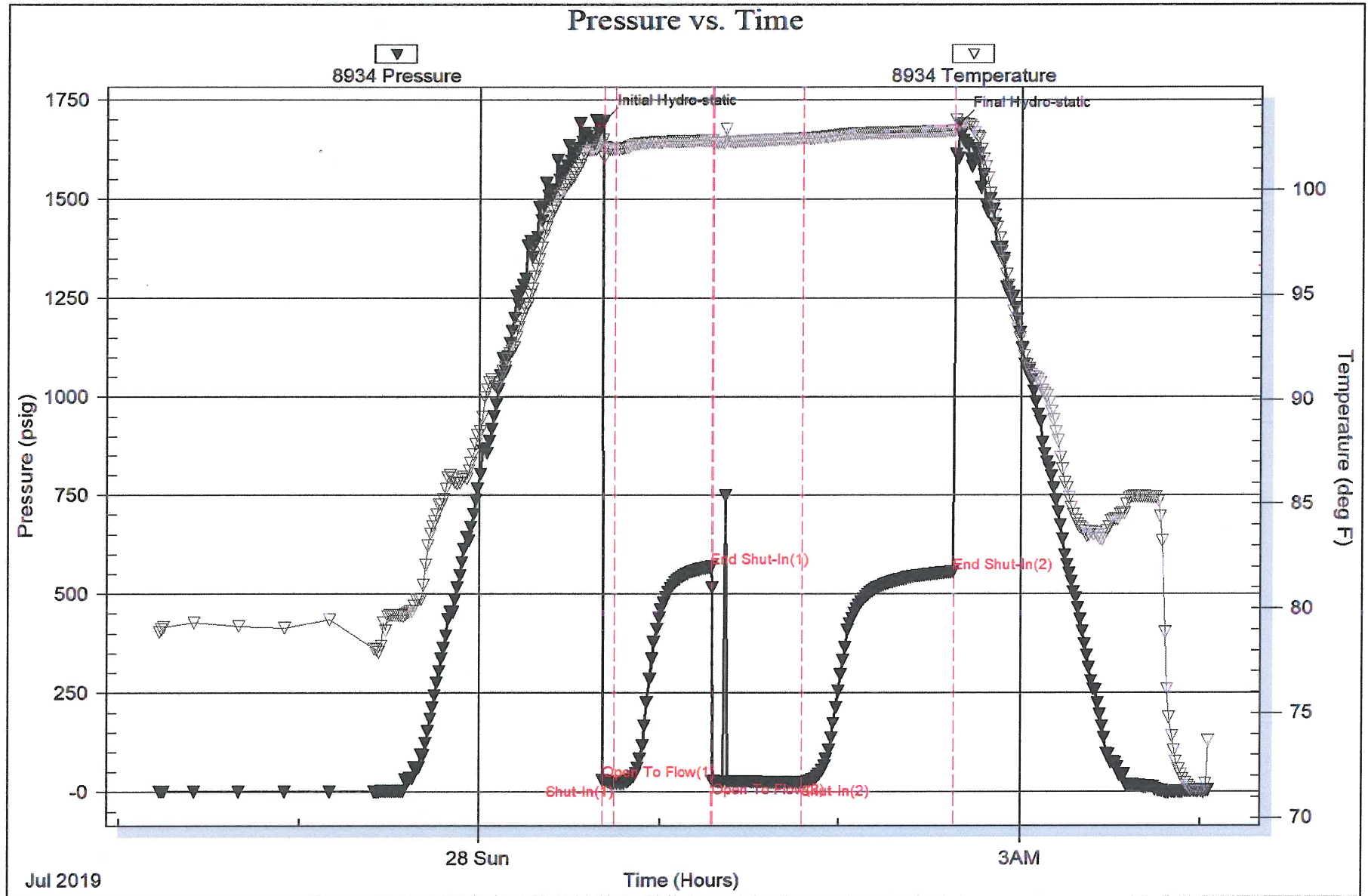
Oil API: deg API
Water Salinity: ppm

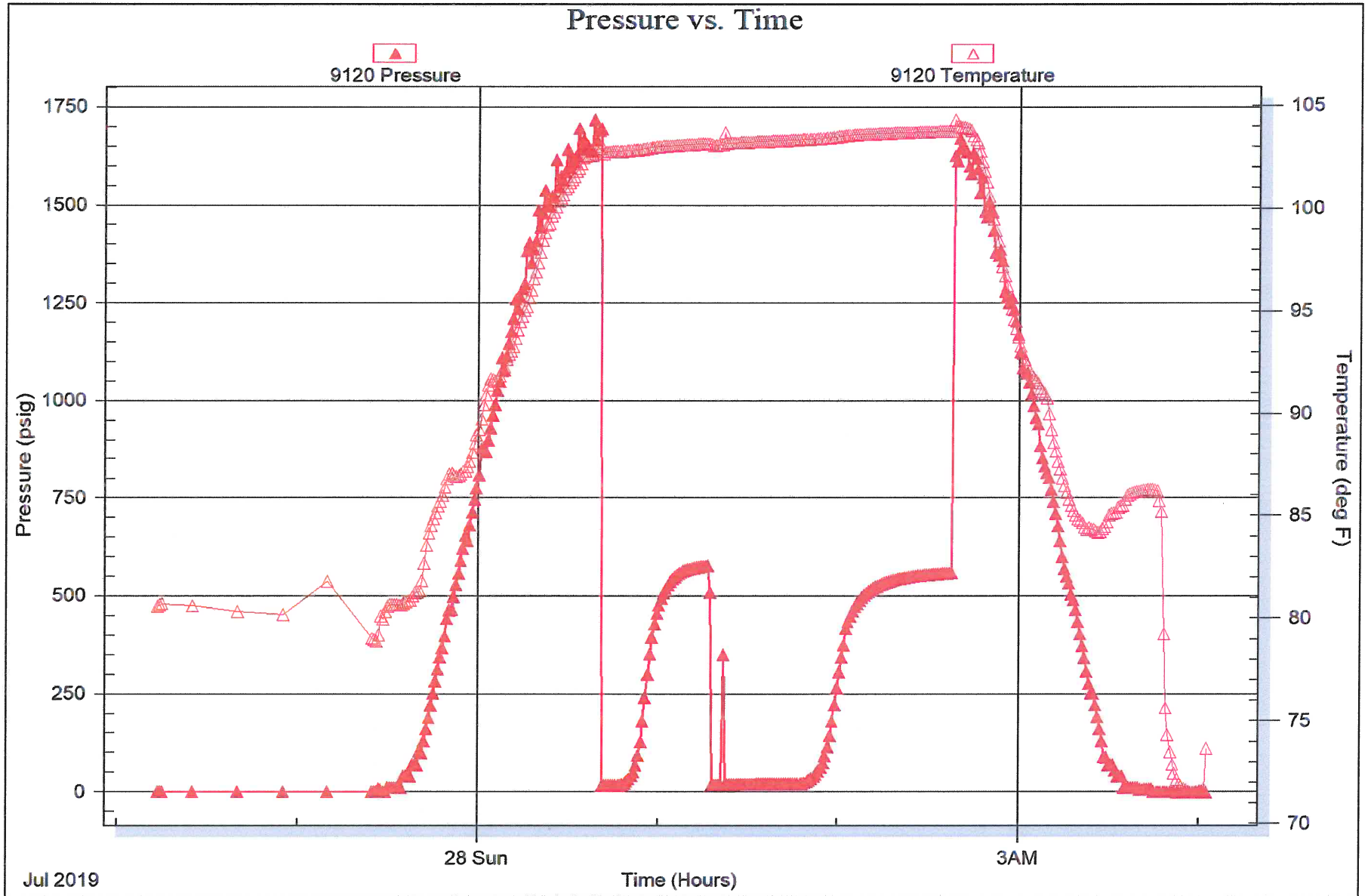
Recovery Information

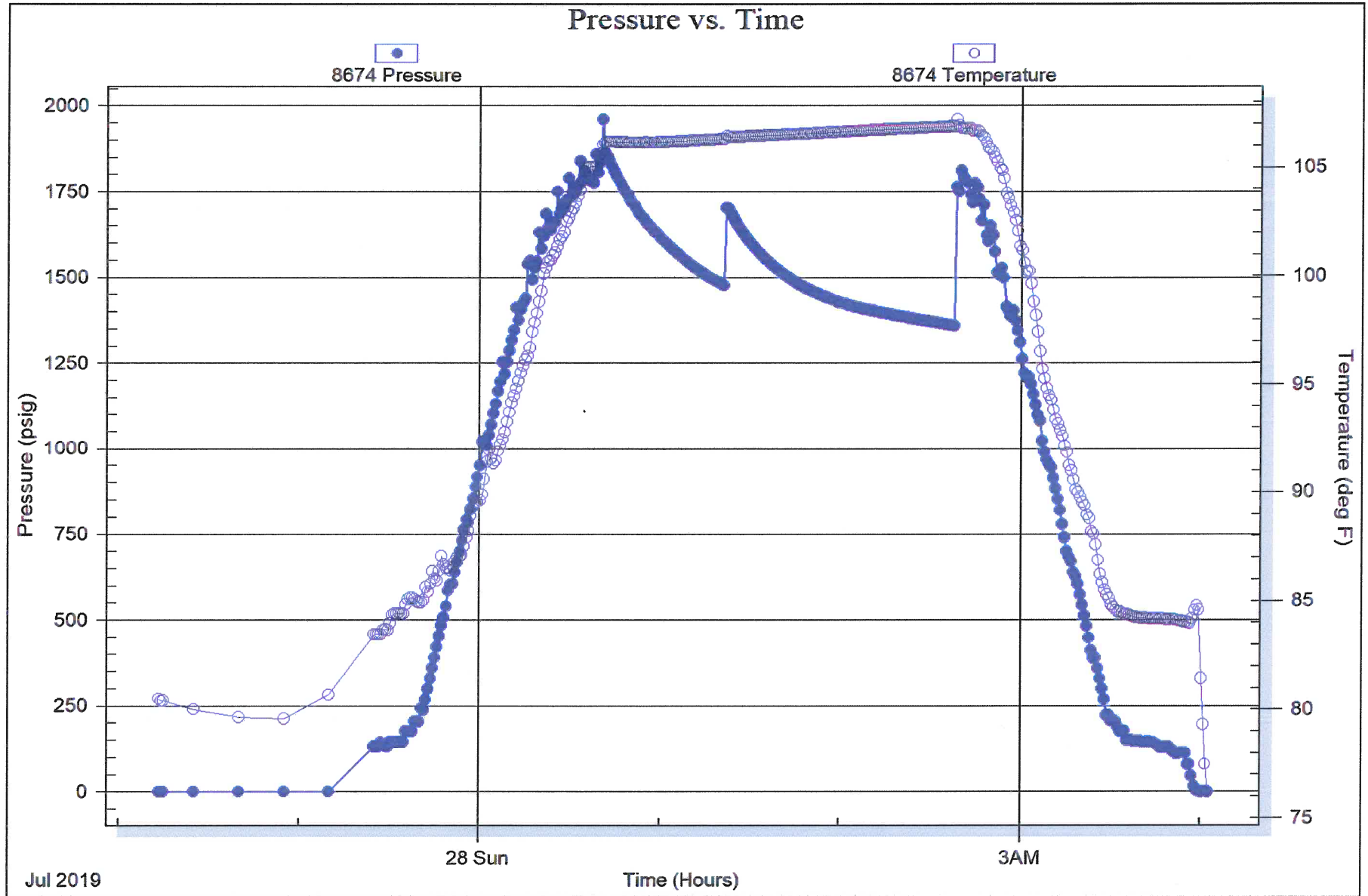
Recovery Table

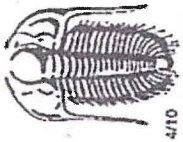
Length ft	Description	Volume bbl
3.00	Mud 100%M	0.015

Total Length: 3.00 ft Total Volume: 0.015 bbl
Num Fluid Samples: 0 Num Gas Bombs: 0 Serial #:
Laboratory Name: Laboratory Location:
Recovery Comments: 2#LCM









TRIOBITE TESTING INC.

1515 Commerce Parkway • Hays, Kansas 67601

Test Ticket

65976

NO.

4/10

Well Name & No. Schmid Ranch #1 Test No. 1 Date 07/27/2019
 Company Damar Resources Elevation 2117' KB 2112 GL
 Address 234 W 11th St E A POBOX 70 Hays KS 67601-0070
 Co. Rep / Geo. Roger Moses Rig W9W#8
 Location: Sec. 4 Twp 124 Rge. 17w Co. Ellis State Ks

Interval Tested 3437' - 3460' Zone Tested days 21' Mud Wt. 8.9
 Anchor Length 23' 297' tail Drill Pipe Run 3292' Vis 51
 Top Packer Depth 3437' Drill Collars Run 120' WL 8.8
 Bottom Packer Depth 3460' Wt. Pipe Run - LCM 2#
 Total Depth 3757' Chlorides 4000 ppm System

Blow Description 17- Weak Surface
1st- No Return
27- No Blow; Flush; No help
28- No Return

Rec	Feet of	Mud	%oil	%gas	%water	%mud
Rec	3	Feet of Mud			100	%mud
Rec		Feet of	%oil	%gas	%water	%mud
Rec		Feet of	%oil	%gas	%water	%mud
Rec		Feet of	%oil	%gas	%water	%mud
Rec		Feet of	%oil	%gas	%water	%mud

Rec Total 3 BHT 102° Gravity - API RW - @ - F Chlorides -
 (A) Initial Hydrostatic 1697 Test 1200 T-On Location 21:43
 (B) First Initial Flow 29 Jars 250 T-Started 22:13
 (C) First Final Flow 21 Safety Joint 75 T-Open 00:40 07/28/2019
 (D) Initial Shut-In 568 Circ Sub - T-Pulled 02:30
 (E) Second Initial Flow 27 Hourly Standby - T-Out 04:01
 (F) Second Final Flow 22 Mileage 327 32 Comments
 (G) Final Shut-In 555 Sampler -
 (H) Final Hydrostatic 1690 Straddle 600

Initial Open 5 EM Tool
 Initial Shut-In 30 Ruined Shale Packer
 Final Flow 30 Ruined Packer
 Final Shut-In 45 Extra Copies
 Sub Total 0
 Total 2407
 Sub Total 2407
 Accessibility 2407
 MP/DST Disc't

Approved By [Signature] Our Representative [Signature]
 Triobite Testing Inc. shall not be liable for damaged or any kind of the property or personnel of the one for whom a test is made or for any loss suffered or sustained, directly or indirectly, through the use of its equipment, or its statements or opinion concerning the results of any test, tools lost or damaged in the hole shall be paid for at cost by the party for whom the test is made.
785-209-016