



## DRILL STEM TEST REPORT

Prepared For: **Shakespeare Oil Co**

202 W. Main  
Salem, IL 62881

ATTN: Vern Schrag

**C.L. Community #1-30**

**30-16S-32W Scott,KS**

Start Date: 2019.07.19 @ 23:33:00

End Date: 2019.07.20 @ 05:34:50

Job Ticket #: 64363                      DST #: 1

Trilobite Testing, Inc  
1515 Commerce Parkway Hays, KS 67601  
ph: 785-625-4778 fax: 785-625-5620

Printed: 2019.07.22 @ 13:29:18



**TRILOBITE  
TESTING, INC.**

# DRILL STEM TEST REPORT

Shakespeare Oil Co

**30-16S-32W Scott,KS**

202 W. Main  
Salem, IL 62881

**C.L. Community #1-30**

Job Ticket: 64363

**DST#: 1**

ATTN: Vern Schrag

Test Start: 2019.07.19 @ 23:33:00

## GENERAL INFORMATION:

Formation: **Marmaton**

Deviated: No Whipstock: ft (KB)

Time Tool Opened: 01:41:50

Time Test Ended: 05:34:50

Test Type: Conventional Bottom Hole (Initial)

Tester: Martine Salinas

Unit No: 82

**Interval: 4294.00 ft (KB) To 4400.00 ft (KB) (TVD)**

Reference Elevations: 2931.00 ft (KB)

Total Depth: 4400.00 ft (KB) (TVD)

2921.00 ft (CF)

Hole Diameter: 7.88 inches Hole Condition: Good

KB to GR/CF: 10.00 ft

**Serial #: 8734 Outside**

Press@RunDepth: 28.67 psig @ 4295.00 ft (KB)

Capacity: 8000.00 psig

Start Date: 2019.07.19

End Date:

2019.07.20

Last Calib.: 2019.07.20

Start Time: 23:33:01

End Time:

05:34:50

Time On Btm: 2019.07.20 @ 01:40:40

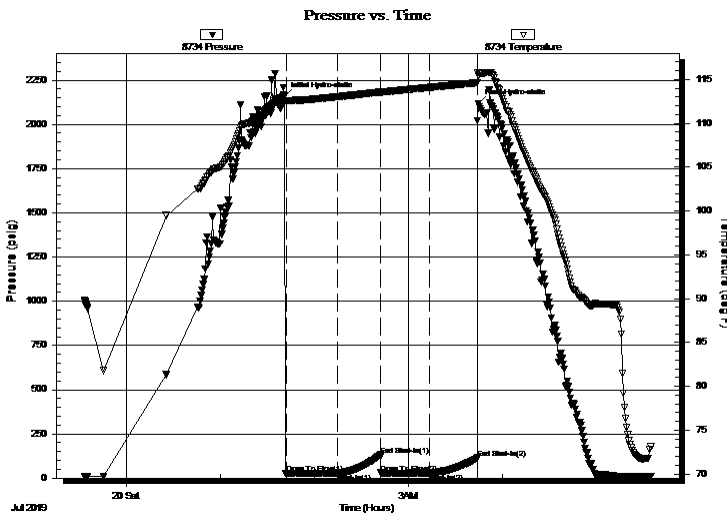
Time Off Btm: 2019.07.20 @ 03:44:40

TEST COMMENT: 30-IF-Surface blow built to 1/4"

30-ISI-No blow back

30-FF-No blow

30-FSI-No blow back



## PRESSURE SUMMARY

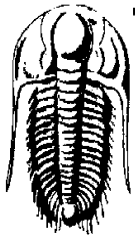
Time (Min.)	Pressure (psig)	Temp (deg F)	Annotation
0	2157.40	113.12	Initial Hydro-static
2	28.14	112.60	Open To Flow (1)
35	29.09	113.04	Shut-In(1)
62	131.34	113.57	End Shut-In(1)
62	29.37	113.54	Open To Flow (2)
93	28.67	114.09	Shut-In(2)
124	114.84	114.63	End Shut-In(2)
124	2115.80	115.45	Final Hydro-static

## Recovery

Length (ft)	Description	Volume (bbl)
5.00	100% Mud	0.07

## Gas Rates

Choke (inches)	Pressure (psig)	Gas Rate (Mcf/d)



**TRILOBITE TESTING, INC.**

# DRILL STEM TEST REPORT

Shakespeare Oil Co

**30-16S-32W Scott, KS**

202 W. Main  
Salem, IL 62881

**C.L. Community #1-30**

ATTN: Vern Schrag

Job Ticket: 64363

**DST#: 1**

Test Start: 2019.07.19 @ 23:33:00

## GENERAL INFORMATION:

Formation: **Marmaton**

Deviated: No Whipstock: ft (KB)

Time Tool Opened: 01:41:50

Time Test Ended: 05:34:50

Test Type: Conventional Bottom Hole (Initial)

Tester: Martine Salinas

Unit No: 82

**Interval: 4294.00 ft (KB) To 4400.00 ft (KB) (TVD)**

Reference Elevations: 2931.00 ft (KB)

Total Depth: 4400.00 ft (KB) (TVD)

2921.00 ft (CF)

Hole Diameter: 7.88 inches Hole Condition: Good

KB to GR/CF: 10.00 ft

**Serial #: 8959**

**Inside**

Press@RunDepth: psig @ 4295.00 ft (KB)

Capacity: 8000.00 psig

Start Date: 2019.07.19

End Date:

2019.07.20

Last Calib.:

2019.07.20

Start Time: 23:33:01

End Time:

05:34:50

Time On Btm:

Time Off Btm:

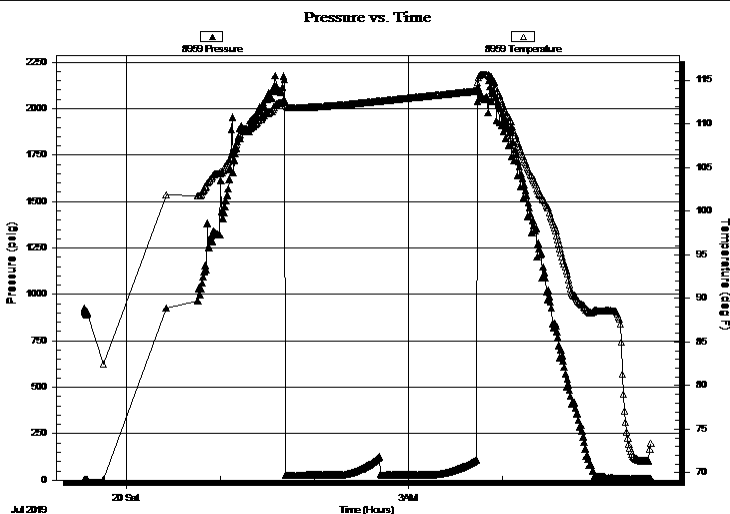
TEST COMMENT: 30-IF-Surface blow built to 1/4"

30-ISI-No blow back

30-FF-No blow

30-FSI-No blow back

## PRESSURE SUMMARY



Time (Min.)	Pressure (psig)	Temp (deg F)	Annotation

## Recovery

Length (ft)	Description	Volume (bbl)
5.00	100% Mud	0.07

## Gas Rates

	Choke (inches)	Pressure (psig)	Gas Rate (Mcf/d)



**TRILOBITE  
TESTING, INC.**

# DRILL STEM TEST REPORT

**TOOL DIAGRAM**

Shakespeare Oil Co

**30-16S-32W Scott,KS**

202 W. Main  
Salem, IL 62881

**C.L. Community #1-30**

Job Ticket: 64363

**DST#: 1**

ATTN: Vern Schrag

Test Start: 2019.07.19 @ 23:33:00

## Tool Information

Drill Pipe:	Length: 4290.00 ft	Diameter: 3.80 inches	Volume: 60.18 bbl	Tool Weight: 2500.00 lb
Heavy Wt. Pipe:	Length: 0.00 ft	Diameter: 2.75 inches	Volume: 0.00 bbl	Weight set on Packer: 25000.00 lb
Drill Collar:	Length: 0.00 ft	Diameter: 2.25 inches	Volume: 0.00 bbl	Weight to Pull Loose: 55000.00 lb
			<u>Total Volume: 60.18 bbl</u>	Tool Chased 0.00 ft
Drill Pipe Above KB:	24.00 ft			String Weight: Initial 50000.00 lb
Depth to Top Packer:	4294.00 ft			Final 50000.00 lb
Depth to Bottom Packer:	ft			
Interval between Packers:	106.00 ft			
Tool Length:	134.00 ft			
Number of Packers:	2	Diameter: 6.75 inches		

Tool Comments:

Tool Description	Length (ft)	Serial No.	Position	Depth (ft)	Accum. Lengths
------------------	-------------	------------	----------	------------	----------------

Shut In Tool	5.00			4271.00	
Hydraulic tool	5.00	1113		4276.00	
Jars	5.00	01-07		4281.00	
Safety Joint	3.00	-001		4284.00	
Packer	5.00			4289.00	28.00 Bottom Of Top Packer
Packer	5.00			4294.00	
Stubb	1.00			4295.00	
Recorder	0.00	8959	Inside	4295.00	
Recorder	0.00	8734	Outside	4295.00	
Perforations	34.00			4329.00	
Change Over Sub	1.00			4330.00	
Drill Pipe	64.00			4394.00	
Change Over Sub	1.00			4395.00	
Bullnose	5.00			4400.00	106.00 Bottom Packers & Anchor

**Total Tool Length: 134.00**



**TRILOBITE  
TESTING, INC.**

# DRILL STEM TEST REPORT

**FLUID SUMMARY**

Shakespeare Oil Co

**30-16S-32W Scott,KS**

202 W. Main  
Salem, IL 62881

**C.L. Community #1-30**

Job Ticket: 64363

**DST#: 1**

ATTN: Vern Schrag

Test Start: 2019.07.19 @ 23:33:00

## Mud and Cushion Information

Mud Type: Gel Chem

Cushion Type:

Oil API:

deg API

Mud Weight: 9.00 lb/gal

Cushion Length:

ft

Water Salinity:

ppm

Viscosity: 60.00 sec/qt

Cushion Volume:

bbbl

Water Loss: 7.19 in<sup>3</sup>

Gas Cushion Type:

Resistivity: ohm.m

Gas Cushion Pressure:

psig

Salinity: ppm

Filter Cake: 1.00 inches

## Recovery Information

Recovery Table

Length ft	Description	Volume bbl
5.00	100% Mud	0.070

Total Length: 5.00 ft      Total Volume: 0.070 bbl

Num Fluid Samples: 0

Num Gas Bombs: 0

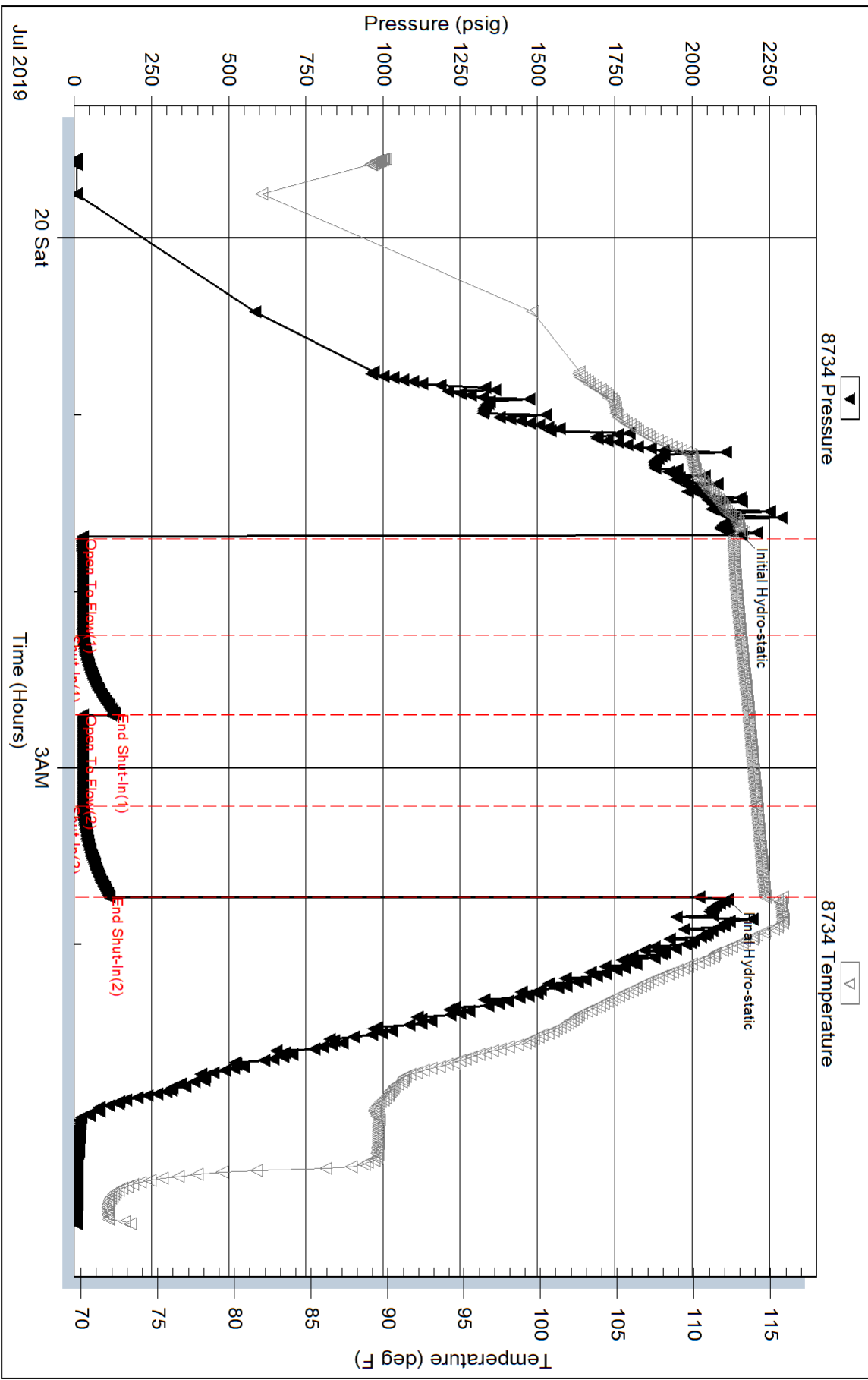
Serial #:

Laboratory Name:

Laboratory Location:

Recovery Comments:

### Pressure vs. Time



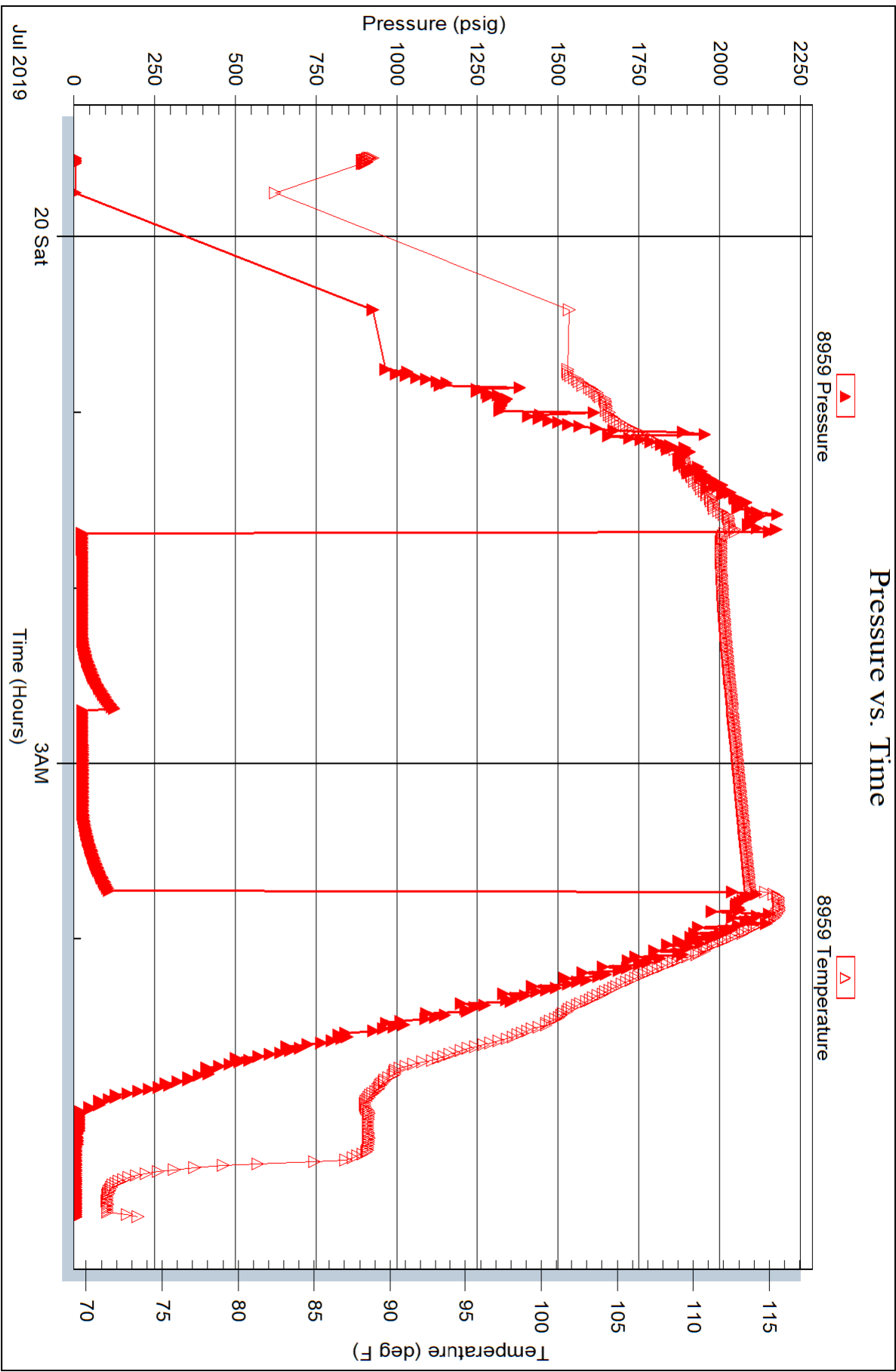
Serial #: 8959

Inside

Shakespeare Oil Co

C.L. Community #1-30

DST Test Number: 1





# TRILOBITE TESTING INC.

1515 Commerce Parkway • Hays, Kansas 67601

## Test Ticket

NO. 64363

Well Name & No. C.L. Community #1-30 Test No. 1 Date 7-19-19  
 Company Shakespeare Oil Co Inc. Elevation 2931 KB 2921 GL  
 Address 202 W Main Salem, IL 62881  
 Co. Rep / Geo. Vern Schrag Rig Southwind #8  
 Location: Sec. 30 Twp 16S Rge. 32W Co. Scott State KS

Interval Tested 4294-4400 Zone Tested Marmaton  
 Anchor Length 106 Drill Pipe Run 4290 Mud Wt. 9.1  
 Top Packer Depth 4289 Drill Collars Run — Vis 60  
 Bottom Packer Depth 4294 Wt. Pipe Run — WL 7.2  
 Total Depth 4400 Chlorides 2500 ppm System LCM 2#

Blow Description IF - S. blow built to 1/4"  
ISI - No blowback  
FF - No blow  
FSI - No blowback

Rec	Feet of	%gas	%oil	%water	%mud
<u>5</u>	<u>Mud</u>			<u>100</u>	
Rec	Feet of	%gas	%oil	%water	%mud
Rec	Feet of	%gas	%oil	%water	%mud
Rec	Feet of	%gas	%oil	%water	%mud
Rec	Feet of	%gas	%oil	%water	%mud

Rec Total 5 BHT 115 Gravity — API RW — @ — F Chlorides — ppm

(A) Initial Hydrostatic 2157  Test 1300 T-On Location 23:00  
 (B) First Initial Flow 28  Jars 250 T-Started 23:33  
 (C) First Final Flow 29  Safety Joint 75 T-Open 01:41  
 (D) Initial Shut-In 131  Circ Sub — T-Pulled 03:41  
 (E) Second Initial Flow 29  Hourly Standby — T-Out 05:35  
 (F) Second Final Flow 29  Mileage 27 RT. x 2 54 Comments Released @ 07:30  
 (G) Final Shut-In 115  Sampler — 7-21-19  
 (H) Final Hydrostatic 2116  Straddle —  
 Ruined Shale Packer —  
 Ruined Packer —

Initial Open 30  Extra Packer —  Extra Copies —  
 Initial Shut-In 30  Extra Recorder — Sub Total 0  
 Final Flow 30  Day Standby — Total 1679  
 Final Shut-In 30  Accessibility — MP/DST Disc't —  
 Sub Total 1679

Approved By Vern Schrag Our Representative Mark Salinas

Trilobite Testing Inc. shall not be liable for damaged of any kind of the property or personnel of the one for whom a test is made, or for any loss suffered or sustained, directly or indirectly, through the use of its equipment, or its statements or opinion concerning the results of any test, tools lost or damaged in the hole shall be paid for at cost by the party for whom the test is made.