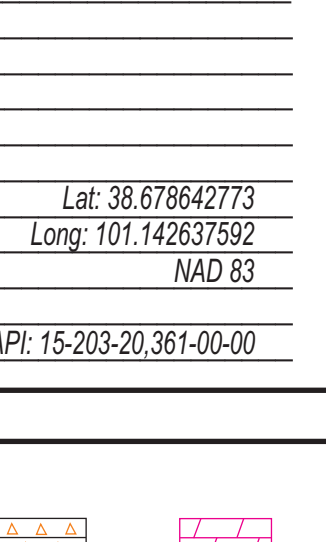


GEOLOGIST'S REPORT		ELEVATIONS KB 3180' DF GL 3171' Measurements Are All From 3180' KB
DRILLING TIME AND SAMPLE LOG		
COMPANY	Shakespeare Oil Co., Inc	CASING CONDUCTOR SURFACE 8 5/8" @ 262' PRODUCTION
LEASE	Sanders Community #1-12	
FIELD	Wilcard	
LOCATION	2380' FWL, 1170' FWL, NW/4	
SEC	12 TWSP 16S RGE 35W	
COUNTY	Wichita STATE Kansas	
CONTRACTOR	Duke Drilling Rig #4	
SPUD	7-16-2019 COMP 7-27-2019	
RTD	4900' LTD 4900'	
MUD UP	3525' TYPE MUD: Chemical	
SAMPLES SAVED FROM	3700 TO RTD	ELECTRICAL SURVEYS
DRILLING TIME KEPT FROM	3700 TO RTD	
SAMPLES EXAMINED FROM	3700 TO RTD	
GEOLOGICAL SUPERVISION FROM	3680 TO RTD	
GEOLOGIST ON WELL	Tim J. Lauer	
FORMATION TOPS	ELECTRIC LOG	SAMPLE LOG
Anhydrite	2499 (+681)	
Heebner	4005 (-825)	
Lansing	4053 (-873)	
Muncie Creek	4228 (-1048)	
Stark	4319 (-1139)	
Marmaton	4465 (-1285)	
Cherokee Shale		
Johnson Zone		
Mississippian		
Total Depth		

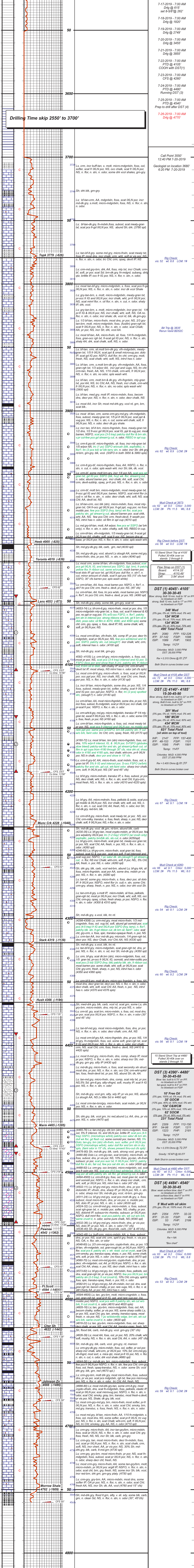


ELEVATIONS
 KB 3180'
 GL 3171'
 35W
 RGE 16S
 TWSP 12
 COUNTY Wichita
 STATE KS
 LOCATION 2380' FWL, 1170' FWL, NW/4 SE SW NW
 COMPANY & WELL Shakespeare #1-12 Sanders Comm.

REMARKS

Lat: 38.678642773
Long: 101.142637592
NAD 83
API: 15-203-20,361-00-00

LEGEND	SAMPLE DESCRIPTION	REMARKS
--------	--------------------	---------



SPUD 3:00 PM 7-16-2019

"BIT RECORD"

- Varel B052C (New) Under Surface to 2035'
- Smith RJ9082 (Rerun) 2035' to 3835'
- Varel B052C (Rerun) 3835' to 4770'

"VERTICAL SURVEYS"

1/2" @ 262'
0" @ 951'
1/2" @ 1479'
1/4" @ 1973'
1/2" @ 2469'
1/2" @ 2965'
3/4" @ 3462'
1" @ 4105'
1" @ 4480'

"DAILY ACTIVITY REPORT"

7-16-2019 - 7:00 AM
Prep to Spud

7-17-2019 - 7:00 AM
Drig @ 615'
set 8-5/8" @ 262'

7-18-2019 - 7:00 AM
Drig @ 1820'

7-19-2019 - 7:00 AM
Drig @ 2749'

7-20-2019 - 7:00 AM
Drig @ 3455'

7-21-2019 - 7:00 AM
Drig @ 3855'

7-22-2019 - 7:00 AM
PTD @ 4105'
COOH with DST(1)

7-23-2019 - 7:00 AM
CFS @ 4260'

7-24-2019 - 7:00 AM
PTD @ 4480'
Running DST (3)

7-25-2019 - 7:00 AM
PTD @ 4540'
Prep to drill after DST (4)

7-26-2019 - 7:00 AM
Drig @ 4770'

Call Point 3550'
12:40 PM 7-20-2019

Geologist on location 3680'
6:20 PM 7-20-2019

15 Stand Short Trip at 4105'
Pulled 30-40k over on stands 2 through 9

Pipe Strands on DST (1)
Board: 4114.33'
Strap: 4110.49'
Diff: 3.84 short

DST (1) 4045' - 4105'
30-30-30-45
Blow: strong, Bob 8 min, built to 17' on FFP, no blowback on FSP

248' Mud
(0% gas, 0% oil, 100% mud, 0% wtr)

124' WCM
(10% gas, 40% oil, 70% mud, 0% wtr)

124' MCW
(0% gas, 0% oil, 10% mud, 70% wtr)

496' Total Fluid
IHP: 2080 FFP: 152-226
IFP: 37-142 FSP: 1096
ISIP: 1089 FHP: 1902
Temp: 112°F
Chlorides MUD: 3,000 PPM
DST: 2,815 PPM
Rw = 0.285 Ohms @ 61.2°F
Both Shut-in curves broken over

Mud Check at 4105 after DST:
vis: 62 wt: 9.0 Chlor: 4,000 LCM: 2# Ph: 11.0 WL: 8.8

DST (2) 4140' - 4185'
15-30-45-90
Blow: strong, Bob 9 min, built to 22' on FFP, no blowback on FSP

201' Mud
(0% gas, 0% oil, 100% mud, 0% wtr)

186' MCW
(0% gas, 0% oil, 40% mud, 60% wtr)

434' MCW
(0% gas, 0% oil, 10% mud, 90% wtr)

821' Total Fluid
(oil skin top of tool)

IHP: 2147 FFP: 157-400
IFP: 48-153 FSP: 1101
ISIP: 1095 FHP: 1991
Temp: 114°F
Chlorides MUD: 4,000 PPM
DST: 27,000 PPM
Rw = 0.405 Ohms @ 61.3°F
Both Shut-in curves broken over

Mud Check at 4260
vis: 66 wt: 9.1 Chlor: 4,000 LCM: 2# Ph: 11.5 WL: 8.0

DST (3) 4140' - 4185'
15-30-45-90
Blow: strong, Bob 9 min, built to 22' on FFP, no blowback on FSP

201' Mud
(0% gas, 0% oil, 100% mud, 0% wtr)

186' MCW
(0% gas, 0% oil, 40% mud, 60% wtr)

434' MCW
(0% gas, 0% oil, 10% mud, 90% wtr)

821' Total Fluid
(oil skin top of tool)

IHP: 2309 FFP: 112-510
IFP: 54-98 FSP: 1211
ISIP: 1223 FHP: 2181
Temp: 112°F
Chlorides MUD: 6,000 PPM
DST: NA
Rw = 0.378 Ohms @ 72.3°F
Both Shut-in curves broken over

Mud Check at 4480 after DST:
vis: 60 wt: 9.1 Chlor: 4,000 LCM: 2# Ph: 11.0 WL: 9.0

DST (4) 4484' - 4540'
30-30-30-45
Blow: weak, surface build, died 17' on FFP, weak surface build, died 5' on FFP, no blowback on FSP

5' Mud with oil skin
(0% gas, 0% oil, 100% mud, 0% wtr)

IHP: 2354 FFP: 32-33
IFP: 31-33 FSP: 49
ISIP: 53 FHP: 2199
Temp: 112°F
Chlorides MUD: 6,000 PPM
DST: NA
Rw = NA

Mud Check at 4547:
vis: 63 wt: 9.2 Chlor: 6,000 LCM: 2# Ph: 11.0 WL: 8.8

Big Check:
vis: 53 wt: 9.2 LCM: 2#