

Max R. Lovely

GEOLOGIST'S REPORT

DRILLING TIME AND SAMPLE LOG

COMPANY: **Bitchie Exploration**

LEASE #1: **Waldert-Collins**

FIELD: **Waldert-Collins**

LOCATION: **B&S E 24 S 16 W 1**

SEC: **28** T16S R37W

COUNTY: **Wichita** STATE: **KS**

CONTRACTOR: **WV #2**

SHOULDER: **5-18-19**

RID: **5020** LID: **5019**

MUD UP: **3366** TYPE: **MUD CHAIN**

FORMATION TOPS AND STRUCTURAL POSITION

ELEVATIONS

KB: **3376**

DF: **3368**

MEASUREMENTS: **ARE ALL**

FORM: **KB**

CASING: **2 1/2"**

PRODUCTION: **2 1/2"**

ELECTRICAL SIGNATURES

COMP: **N/P** SCALES: **5000**

FORMATION	SHAPE	TOP	ELECTRICAL LOG TOP	SUB-SEA	A	B	C
Headwater	2576	2572	824	824	828		
Stotler	3631	3633	257	253	253		
Headwater	4019	4018	840	842	842		
Landing	4032	4033	820	820	821		
Landing	4039	4250	874	874	874		
BKC	4444	4441	1065	1076	1061		
Altamont	4510	4511	1135	1139	1128		
Pawnee	4588	4588	1222	1225	1211		
Fl. Scott	4650	4644	1268	1278	1265		
Cherokee	4873	4872	1286	1305	1281		
Johnson	4789	4780	1404	1414	1382		
Mississippian	4841	4830	1380	1385	1343		

REFERENCE WELLS FOR STRUCTURE

A. STOTLER OIL FIELD, SEC. 28, T. 16S, R. 37W

B. STOTLER OIL FIELD, SEC. 28, T. 16S, R. 37W

C. STOTLER OIL FIELD, SEC. 28, T. 16S, R. 37W

D. STOTLER OIL FIELD, SEC. 28, T. 16S, R. 37W

E. STOTLER OIL FIELD, SEC. 28, T. 16S, R. 37W

F. STOTLER OIL FIELD, SEC. 28, T. 16S, R. 37W

G. STOTLER OIL FIELD, SEC. 28, T. 16S, R. 37W

H. STOTLER OIL FIELD, SEC. 28, T. 16S, R. 37W

I. STOTLER OIL FIELD, SEC. 28, T. 16S, R. 37W

J. STOTLER OIL FIELD, SEC. 28, T. 16S, R. 37W

K. STOTLER OIL FIELD, SEC. 28, T. 16S, R. 37W

L. STOTLER OIL FIELD, SEC. 28, T. 16S, R. 37W

M. STOTLER OIL FIELD, SEC. 28, T. 16S, R. 37W

N. STOTLER OIL FIELD, SEC. 28, T. 16S, R. 37W

O. STOTLER OIL FIELD, SEC. 28, T. 16S, R. 37W

P. STOTLER OIL FIELD, SEC. 28, T. 16S, R. 37W

Q. STOTLER OIL FIELD, SEC. 28, T. 16S, R. 37W

R. STOTLER OIL FIELD, SEC. 28, T. 16S, R. 37W

S. STOTLER OIL FIELD, SEC. 28, T. 16S, R. 37W

T. STOTLER OIL FIELD, SEC. 28, T. 16S, R. 37W

U. STOTLER OIL FIELD, SEC. 28, T. 16S, R. 37W

V. STOTLER OIL FIELD, SEC. 28, T. 16S, R. 37W

W. STOTLER OIL FIELD, SEC. 28, T. 16S, R. 37W

X. STOTLER OIL FIELD, SEC. 28, T. 16S, R. 37W

Y. STOTLER OIL FIELD, SEC. 28, T. 16S, R. 37W

Z. STOTLER OIL FIELD, SEC. 28, T. 16S, R. 37W

AA. STOTLER OIL FIELD, SEC. 28, T. 16S, R. 37W

AB. STOTLER OIL FIELD, SEC. 28, T. 16S, R. 37W

AC. STOTLER OIL FIELD, SEC. 28, T. 16S, R. 37W

AD. STOTLER OIL FIELD, SEC. 28, T. 16S, R. 37W

AE. STOTLER OIL FIELD, SEC. 28, T. 16S, R. 37W

AF. STOTLER OIL FIELD, SEC. 28, T. 16S, R. 37W

AG. STOTLER OIL FIELD, SEC. 28, T. 16S, R. 37W

AH. STOTLER OIL FIELD, SEC. 28, T. 16S, R. 37W

AI. STOTLER OIL FIELD, SEC. 28, T. 16S, R. 37W

AJ. STOTLER OIL FIELD, SEC. 28, T. 16S, R. 37W

AK. STOTLER OIL FIELD, SEC. 28, T. 16S, R. 37W

AL. STOTLER OIL FIELD, SEC. 28, T. 16S, R. 37W

AM. STOTLER OIL FIELD, SEC. 28, T. 16S, R. 37W

AN. STOTLER OIL FIELD, SEC. 28, T. 16S, R. 37W

AO. STOTLER OIL FIELD, SEC. 28, T. 16S, R. 37W

AP. STOTLER OIL FIELD, SEC. 28, T. 16S, R. 37W

AQ. STOTLER OIL FIELD, SEC. 28, T. 16S, R. 37W

AR. STOTLER OIL FIELD, SEC. 28, T. 16S, R. 37W

AS. STOTLER OIL FIELD, SEC. 28, T. 16S, R. 37W

AT. STOTLER OIL FIELD, SEC. 28, T. 16S, R. 37W

AU. STOTLER OIL FIELD, SEC. 28, T. 16S, R. 37W

AV. STOTLER OIL FIELD, SEC. 28, T. 16S, R. 37W

AW. STOTLER OIL FIELD, SEC. 28, T. 16S, R. 37W

AX. STOTLER OIL FIELD, SEC. 28, T. 16S, R. 37W

AY. STOTLER OIL FIELD, SEC. 28, T. 16S, R. 37W

AZ. STOTLER OIL FIELD, SEC. 28, T. 16S, R. 37W

BA. STOTLER OIL FIELD, SEC. 28, T. 16S, R. 37W

BB. STOTLER OIL FIELD, SEC. 28, T. 16S, R. 37W

BC. STOTLER OIL FIELD, SEC. 28, T. 16S, R. 37W

BD. STOTLER OIL FIELD, SEC. 28, T. 16S, R. 37W

BE. STOTLER OIL FIELD, SEC. 28, T. 16S, R. 37W

BF. STOTLER OIL FIELD, SEC. 28, T. 16S, R. 37W

BG. STOTLER OIL FIELD, SEC. 28, T. 16S, R. 37W

BH. STOTLER OIL FIELD, SEC. 28, T. 16S, R. 37W

BI. STOTLER OIL FIELD, SEC. 28, T. 16S, R. 37W

BJ. STOTLER OIL FIELD, SEC. 28, T. 16S, R. 37W

BK. STOTLER OIL FIELD, SEC. 28, T. 16S, R. 37W

BL. STOTLER OIL FIELD, SEC. 28, T. 16S, R. 37W

BM. STOTLER OIL FIELD, SEC. 28, T. 16S, R. 37W

BN. STOTLER OIL FIELD, SEC. 28, T. 16S, R. 37W

BO. STOTLER OIL FIELD, SEC. 28, T. 16S, R. 37W

BP. STOTLER OIL FIELD, SEC. 28, T. 16S, R. 37W

BQ. STOTLER OIL FIELD, SEC. 28, T. 16S, R. 37W

BR. STOTLER OIL FIELD, SEC. 28, T. 16S, R. 37W

BS. STOTLER OIL FIELD, SEC. 28, T. 16S, R. 37W

BT. STOTLER OIL FIELD, SEC. 28, T. 16S, R. 37W

BU. STOTLER OIL FIELD, SEC. 28, T. 16S, R. 37W

BV. STOTLER OIL FIELD, SEC. 28, T. 16S, R. 37W

BW. STOTLER OIL FIELD, SEC. 28, T. 16S, R. 37W

BX. STOTLER OIL FIELD, SEC. 28, T. 16S, R. 37W

BY. STOTLER OIL FIELD, SEC. 28, T. 16S, R. 37W

BZ. STOTLER OIL FIELD, SEC. 28, T. 16S, R. 37W

CA. STOTLER OIL FIELD, SEC. 28, T. 16S, R. 37W

CB. STOTLER OIL FIELD, SEC. 28, T. 16S, R. 37W

CC. STOTLER OIL FIELD, SEC. 28, T. 16S, R. 37W

CD. STOTLER OIL FIELD, SEC. 28, T. 16S, R. 37W

CE. STOTLER OIL FIELD, SEC. 28, T. 16S, R. 37W

CF. STOTLER OIL FIELD, SEC. 28, T. 16S, R. 37W

CG. STOTLER OIL FIELD, SEC. 28, T. 16S, R. 37W

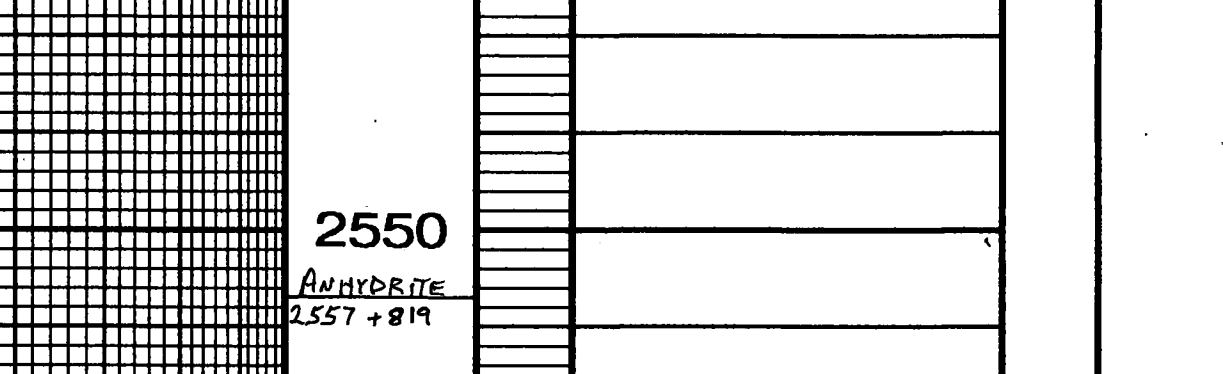
CH. STOTLER OIL FIELD, SEC. 28, T. 16S, R. 37W

CI. STOTLER OIL FIELD, SEC. 28, T. 16S, R. 37W

CJ. STOTLER OIL FIELD, SEC. 28, T. 16S, R. 37W

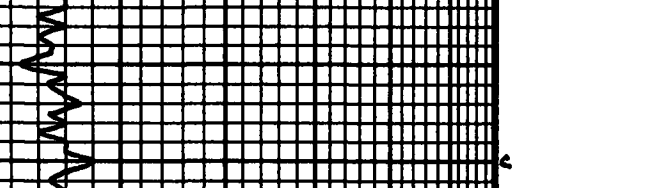
CK. STOTLER OIL FIELD, SEC. 28, T. 16S, R. 37W

LEGEND



DRILLING TIME IN MINUTES PER FOOT

Rate of Penetration Decreases



DEPTH

2550

ANHYDRITE 2557-2574

BASE ANHYDRITE 2576+800

3500

3600

STOTLER 3631-255

3700

3800

3900

4000

HEWNER 4019-643

TORONTO 4034-658

LANESING 4069-643

4100

4200

MUNNIE 4251-875

4300

4400

HUSH 4494-1090

4500

BKC 4444-1068

MARMATON 4480-1104

4600

PANNEK 4598-1274

4700

MYRICK 4634-1258

FT. SLOTT 4650-1274

4800

CHEROKEE 4673-1297

4900

MORROW SD 4861-1485

4900

MILLS 4941-1525

5000

JOHNSON 4789-1413

4800

MORROW SH 4837-1461

4900

MORROW SD 4861-1485

4900

MILLS 4941-1525

5000

JOHNSON 4789-1413

4800

MORROW SH 4837-1461

4900

MORROW SD 4861-1485

4900

MILLS 4941-1525

5000

JOHNSON 4789-1413

4800

MORROW SH 4837-1461

4900

MORROW SD 4861-1485

4900

MILLS 4941-1525

5000

JOHNSON 4789-1413

4800

MORROW SH 4837-1461

4900

MORROW SD 4861-1485

4900

MILLS 4941-1525

5000

JOHNSON 4789-1413

4800

MORROW SH 4837-1461

4900

MORROW SD 4861-1485

4900

MILLS 4941-1525

5000

JOHNSON 4789-1413

4800

MORROW SH 4837-1461

4900

MORROW SD 4861-1485

4900

MILLS 4941-1525

LITHOLOGY

SAMPLE DESCRIPTIONS

ANHYDRITE

ANHYDRITE

ANHYDRITE

ANHYDRITE

ANHYDRITE

ANHYDRITE

ANHYDRITE

ANHYDRITE

ANHYDRITE

ANHYDRITE

ANHYDRITE

ANHYDRITE

ANHYDRITE

ANHYDRITE

ANHYDRITE

ANHYDRITE

ANHYDRITE

ANHYDRITE

ANHYDRITE

ANHYDRITE

ANHYDRITE

ANHYDRITE

ANHYDRITE

ANHYDRITE

ANHYDRITE

ANHYDRITE

ANHYDRITE

ANHYDRITE

ANHYDRITE

ANHYDRITE

ANHYDRITE

ANHYDRITE