



Woolsey Operating Company, LLC
Scale 1:240 (5'-100' Imperial)
Measured Depth Log

Well Name: **BIIBB #1**
 Location: **Section 6 - Township 31 South - Range 14 West**
 License Number: **33168**
 Spud Date: **June 27, 2019**
 Surface Coordinates: **SE NW SE NE**
173° FN & 88° FEL
 Bottom Hole Coordinates: **1729° N, 1742° E**
 Ground Elevation (ft): **2600'**
 Logged Interval (ft): **To: 3950'**
 Formation: **Shawnee >>> Lansing**
 Type of Drilling Fluid: **Printed by MUDLog on WellSight Systems 1-800-447-1534 www.WellSight.com**

OPERATOR

Company: **Woolsey Operating Company, LLC**
 Address: **125 N. Market, Suite 1000**
Wichita, KS 67202

GEOLOGIST

Name: **Bill Klaver**
 Company: **Woolsey Operating Co., LLC**
 Address: **125 N. Market, Wichita Kansas, 67202**

COMMENTS

Surface Casing: Spud 10:15 pm on June 27, 2019, ran 6 joints of 10 3/4" X 32.5#/ft casing to 275' (tally 263.98) with 300 sx 60/40 poz mix, 3% cc, 1/4# cello flake. Plug down 10 am on June 28, 2019. Cement did circulate. Production casing: none ran
 Deviation Surveys: 5 at 284', 1 at 833', 75 at 1303', 75 at 1805', 1 at 2304', 1 at 2805', 75 at 3308', 1.25 at 3736', Pipe Strap @ 3736'. Board: 3746.26', Strap: 3743.51', strap 2.75' short. No correction was made to the board.
 1) 12 1/2" JZ RR in 0' out at 284'
 2) 7 7/8" Hughs Tool DP 506 in at 284' out at 3736'
 3) 7 7/8" Vareli HE-29 RR in at 3736' out at 3950'
 Gas Detector: Pason Systems
 Mud System: Mud-Co. Brad Bortz, Engineer
 DSTs: Tribotite Testing, Leal Cason, Tester
 E-Logs: ELI Wireline, Dual Induction Laterolog w/SP, CNL-FDC w/PE, GR and Calliper Jeff Luebbers, Gus Pfannenstiel, Engineers
 Company Man: Alan Dick

DSTs

DST #1 Toronto, 3664'-3736', 30"-60"-30"-60", wk 1/2" blow IFF, wk 1/2" FFP. Rec: 8' Drilling mud, IHP 1873, IFF 39-46, ICP 1288, FFP 47-55, FCIP 1231, FHP 1860, BHT 106 deg.

CREWS

Galen Roach, Tool Pusher
 Charles Stout, Morning
 Scott Edwards, Days
 Steven "Skippy" Green, Evening

ROCK TYPES

Anhy	Shy dolo	Dol	Sstst	Shale 3
Bent	Dol	Gyp	Sa	Silly dol
Chl	Sdy lmst	Lmst	Black sh	Dol lmst
Clyst	Mlmt	Salt	Gry sh	Granite wash
Coal	Silt	Shale	Shylstst	Lmst
Congl	Silt		Slysh	Calc dol
Sdy dolo			Ss 2	Shale 3

ACCESSORIES

Chlorite	PELES	Grysh
Dol	Pellet	Gryslt
Sand	Pisolite	Lms
Silty	Plant	Sandylms
	Strom	Sh
	Fuss	Siltstn
	Oomoldic	
	STRINGER	
	Anhy	
	Arg	
	Bent	
	Coal	
	Dol	
	Gyp	
	LS	
	Mlmt	
	Sststg	
	Ssstg	
	Carbsh	
	Clysh	
	Dol	

MINERAL

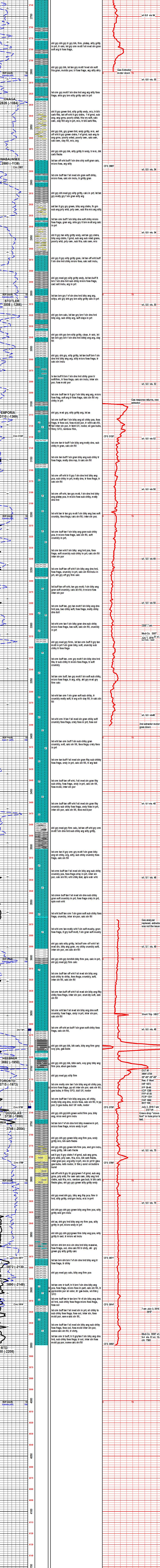
- Anhy
- Arg
- Bent
- Bit
- Brefrag
- Calc
- Carb
- Chitk
- Chitl
- Dol
- Ferrel
- Ferr
- Gla
- Marl
- Nodule
- Phos
- Pyr
- Salt
- Sandy
- Silt

FOSSIL

- Algae
- Amph
- Belem
- Biolost
- Brach
- Bryozoa
- Cephal
- Coral
- Crin
- Echin
- Fish
- Foram
- Fossil
- Gastro
- Ostra

TEXTURE

- Boundst
- Chalky
- Cryxln
- Earthy
- Finexln
- Grainst
- Lithogr
- Microxln
- Mudst
- Packst
- Wackest



Woolsey Operating Company, LLC
 BIIBB #1
 SE NW SE NE
 173° FN & 88° FEL
 Sec 6 - Twp 31 S - Rge 14 W
 Barber County, Kansas
 Field: Mulberry East
 GL 1729' KS 1742'
 A.P.# 45-012-2433-00-00