



Scale 1:240 Imperial

Well Name: Imel 4-6  
 Surface Location: 1580' FNL \_1245' FEL 6-29S-22W  
 Bottom Location:  
 API: 15-057-21010-00-00  
 License Number: 5004  
 Spud Date: 5/6/2019 Time: 7:45 PM  
 Region: SW KS  
 Drilling Completed: 5/16/2019 Time: 8:53 AM  
 Surface Coordinates: 1580' FNL & 1245' FEL  
 Bottom Hole Coordinates:  
 Ground Elevation: 2511.00ft  
 K.B. Elevation: 2523.00ft  
 Logged Interval: 4200.00ft To: 5420.00ft  
 Total Depth: 5420.00ft  
 Formation: Mississippian  
 Drilling Fluid Type: Chemical Mud

**OPERATOR**

Company: Vincent Oil Corporation  
 Address: 200 W Douglas Ave  
 Ste 725  
 Wichita, KS 67202  
 Contact Geologist: Dick Jordan  
 Contact Phone Nbr: 316.262.3573  
 Well Name: Imel 4-6  
 Location: 1580' FNL \_1245' FEL 6-29S-22W  
 API: 15-057-21010-00-00  
 Pool: Developmental  
 State: KS  
 Field: Kingsdown NW  
 Country: USA

**CONTRACTOR**

Contractor: Duke Drilling Co., Inc.  
 Rig #: 1  
 Rig Type: Mud Rotary  
 Spud Date: 5/6/2019 Time: 7:45 PM  
 TD Date: 5/16/2019 Time: 8:53 AM  
 Rig Release: 5/17/2019 Time: 10:00 PM

**LOGGED BY**

Company: Vincent Oil Corporation  
 Address:  
 Phone Nbr: 316.262.3573  
 Logged By: Geologist Name: Tom Dudgeon

**ELEVATIONS**

K.B. Elevation: 2523.00ft Ground Elevation: 2511.00ft

R.B. Elevation: 2523.00ft Ground Elevation: 2511.00ft  
 K.B. to Ground: 12.00ft

**TOTAL DEPTH**

Measurement Type:	Measurement Depth:	TVD:
RTD	5420.00	5422.00
LTD	5422.00	5422.00

**SURFACE CO-ORDINATES**

Well Type: Vertical  
 Longitude: 37.5520124  
 Latitude: -99.761563  
 N/S Co-ord: 1580' FNL  
 E/W Co-ord: 1245' FEL

**DRILLING FLUID SUMMARY**

Type	Date	From Depth	To Depth
Chemical Mud	5/16/2019	3791.00ft	5420.00ft

**CASING SUMMARY**

	Surface	Intermediate	Main		
Bit Size	12.25 in		7.88 in		
Hole Size	12.25 in		7.88 in		
	Size	Set At	Type	# of Joints	Drilled Out At
Surf Casing	8.625 in	689 ft	23#	16	
Int Casing					
Prod Casing	5.5 in		14#	121	

**CASING SEQUENCE**

Type	Hole Size	Casing Size	At
Surface Casing	12.25 in	8.63	689.00 ft
Production Casing	7.88 in	5.50	5419.00 ft

**OPEN HOLE LOGS**

Logging Company: ELI Wireline  
 Logging Engineer: Jason Cappellucci  
 Truck #: 3802  
 Logging Date: 5/16/2019  
 # Logs Run: 4  
 Time Spent: 5  
 # Logs Run Successful: 4

**LOGS RUN**

Tool	Logged Interval	Logged Interval	Hours	Remarks	Run #
Dual Induction	0.00ft	5420.00ft	0.00		1
DEN/NEU/PE	4200.00ft	5420.00ft	0.00		1
Micro	4200.00ft	5420.00ft	0.00		2
Sonic	0.00ft	5420.00ft	0.00		2

**LOGGING OPERATION SUMMARY**

Date	From	To	Description Of Operation
5/16/2019	0.00ft	5420.00ft	Logs Run Successfully

**DRILLSTEM TESTS**

No	Interval	Formation
1	5242-5287	Mississippian
2	5320-5370	Mississippian

**NOTES**

**REFERENCE WELLS**

A  
 Vincent Oil Corporation Imel #2-6  
 2170' FNL & 860' FEL  
 Sec. 6-29S-22W

Rocks classified using the Dunham Classification

Mudstone (MS)

a mud-supported carbonate rock containing <10% grains

Wackestone (WS)

a mud-supported carbonate lithology containing >10% grains

Packstone (PS)

a grain-supported fabric containing 1% or more mud-grade fraction

Imel 4-6 Tops				Elevation	2523	KB
			Struct.			
Top	Depth	Datum	Imel 2-6	Imel 3-6	LOG TOPS	LOG DATUM
HBR	4367	-1844	3	8		
BL	4515	-1992	3	7		
LANS	4524	-2001	5	11		
STARK	4871	-2348	1	8		
HUSH	4907	-2384	-1	12		
BKC	4974	-2451	-2	9		
MARM	4994	-2471	3	12		
PAW	5071	-2548	-2	5	5071	-2548
LAB	5096	-2573	-2	6	5096	-2573
CHER	5117	-2594	FLT	4	5118	-2595
B/PENN	5214	-2691	-2	7	5214	-2691
MISS	5239	-2716	-1	5	5246	-2723

STRAIGHT HOLE SURVEY

Degree Depth

1°	692
1°	1554'
3/4°	2059'
3/4°	2562'
1°	3067'
1°	3572'
1°	5287'

Pipe Strap 1.52 Short to Board @ 5287'

Surface Casing/Cementing: Ran 16 joints new 8 5/8", 23# surface casing, set at 689' and cemented with 125 sx MDC (3% CC & ¼# Flo-seal/sx) and 150 sx Common (4% Gel, 3% CC & ¼# Flo-seal/sx), plug down at 11:30 AM 5/7/2019, Cement did circulate. WOC, drilled out from under plug at 8:00 PM 5/7/2019.

Production Casing/Cementing: Ran 121 joints of 5.5" , 14# production casing with bottom 20 joints sandblasted to help with cement bonding, Set casing at 5419' with 42' shoe joint on bottom. Rigged up cementers and cemented casing with 175 sx Pro C (5# Kol-seal /sx, & 7% C16A), landed plug at 1100# and bumped plug to 1600# and float held. The rathole was plugged with 30 sx and the mousehole plugged with 20 sx. Cementing completed at 10:00 Am 5/17/2019.

DST #1

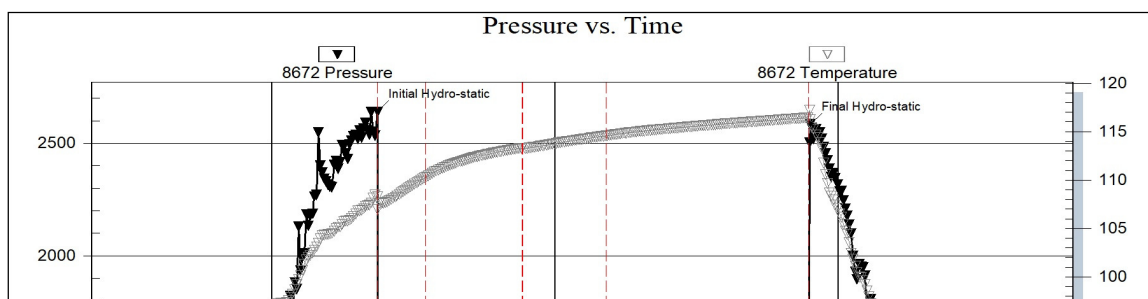
Serial #: 8672

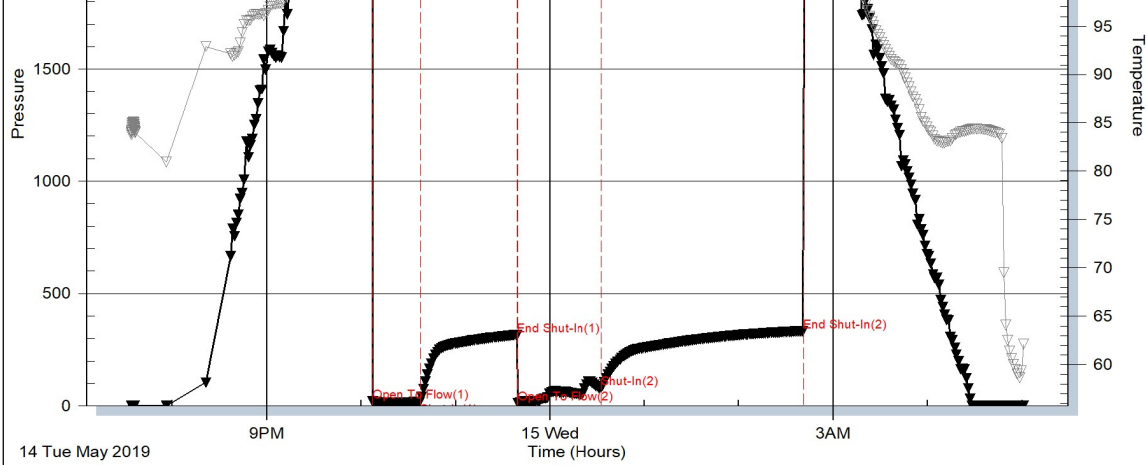
Inside

Vincent Oil Corporation

Imel #4-6

DST Test Number: 1





Trilobite Testing, Inc

Ref. No: 64968

Printed: 2019.05.16 @ 08:23:30

### DST #2

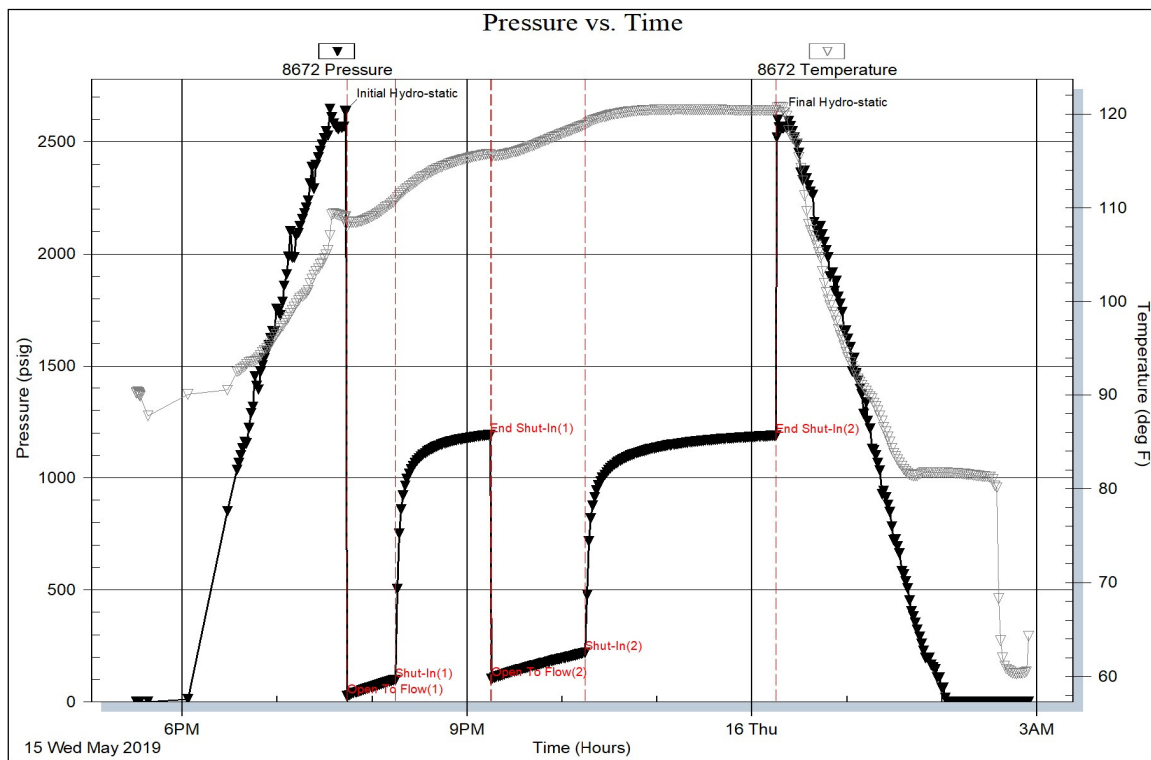
Serial #: 8672

Inside

Vincent Oil Corporation

Imel #4-6

DST Test Number: 2



Trilobite Testing, Inc

Ref. No: 64969

Printed: 2019.05.16 @ 08:20:59

### ROCK TYPES

 Coal	 Lmst fw<7	 Shgy	 Shcol	 Chtcongl
 Dolsec	 Lmst fw>7	 Shblk	 Cht vari	

### ACCESSORIES


#### MINERAL

- ▲ Chert, dark
- △ Chert White

#### FOSSIL

- Bioclastic or Fragmental
- Crinoids
- Oolite

#### STRINGER

-  Conglomerate

## OTHER SYMBOLS

### POROSITY TYPE

- × Intercrystalline
- φ Interoolitic
- V Vuggy
- P Pinpoint
- ↵ Moldic
- O Organic
- F Fracture
- e Earthy
- Fenestral

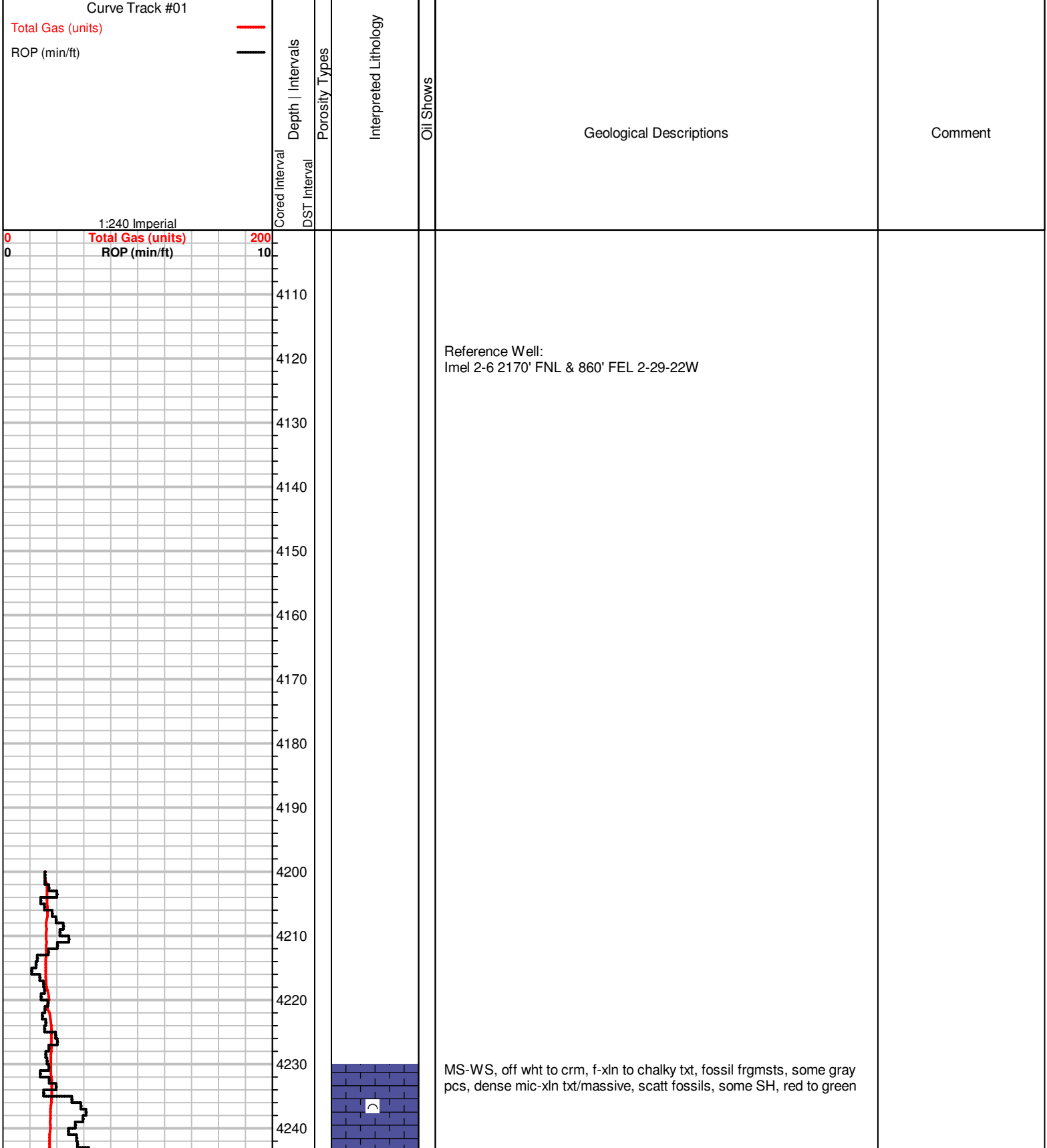
### OIL SHOWS

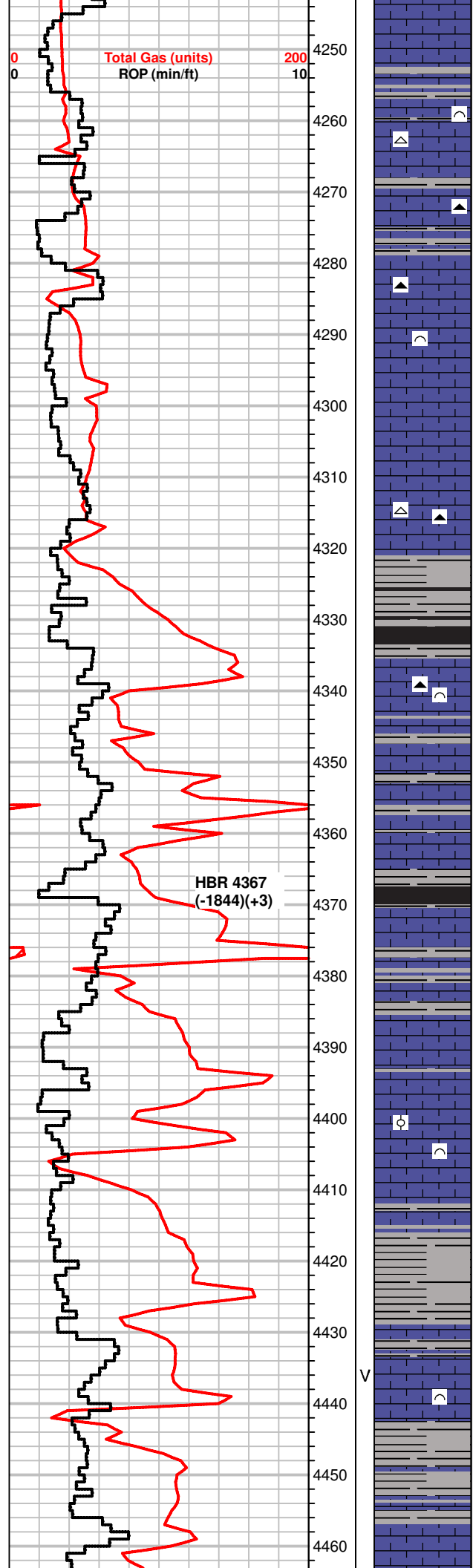
- Even Stn
- ◐ Spotted Stn 50 - 75 %
- ◑ Spotted Stn 25 - 50 %
- Spotted Stn 1 - 25 %
- Questionable Stn
- D Dead Oil Stn
- Fluorescence

### INTERVALS

- Core
- DST

Printed by GEOstrip VC Striplog version 4.0.8.15 (www.grsi.ca)





MS-WS, scatt PS, off wht to lt. tan, f-xln, fn-gr oolitic pcs, firm to friable, aptly chalky, fossilif., NS, Chert, wht, brachs, fus SH, grays

MS, crm to tan, f-xln to mic-xln, massive to chalky pcs, lesser fossils, some calcite veins, SH, grays, silty to sandy, red, Chert, grays

MS-WS, crm to off wht, chalky to f-xln, waxy, firm to hard, micro-oolitic pcs, some dnse, silty pcs scatt, dull fluor, NS

MS-WS, brn to crm, dense/massive to chalky/f-xln pcs, A.A., some scatt fossil frgmts, Chert, gray to opaque, fossilif., calcite, NS

SH, gray to brn, silty, MS-WS, crm to tan, brn, mottled pcs, mineral specs, chaly to dense pcs, f-xln sandy in pt., scatt fossils, Chert, opaque, gray, fossils, NS

SH, blk to gray, dk. gray, silty pcs scatt, MS-WS, off wht to crm, f-xln, off wht to crm, some pcs mic-xln, scatt fossils, scatt mottled pcs A.A., NS

SH, blk to brn, silty, gassy, some pcs sli. carbonaceous

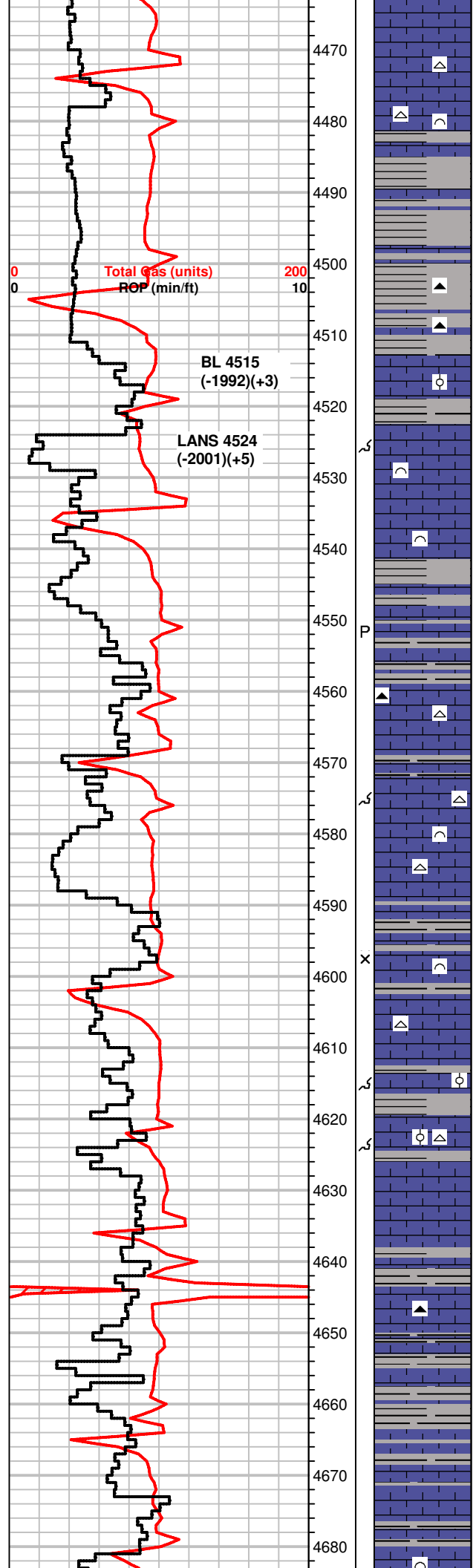
MS-WS, crm to tan, gray, scatt oolitic pcs, f to m-gr, some pcs sandy to shaly, pyrite, wormy mineral filled veins, NS, scatt SH, grays, blk

SH, blk to dk. gray, waxy, lesser amt, some silty, scatt carb. pcs MS-WS, crm to tan, vf-xln to m-xln, sandy/silty pcs, rare, most massive txt, some chalky, scatt fossilif. pcs, NS

MS, off white to lt. gray, f-xln to mic-xln txt, dense scat fossils, Chert, white, gray, NS SH, gray to brn, silty in pt.

MS, ctm to lt. tan, vf-xln to f-xln, firm to dense pcs, scatt gritty txt, fossilif in pt., rare brn pcs, sandy txt, vuggy por., NS, scatt SH, brn to grays, silty pcs.

MS-WS, off wht to lt. gray, rare mottled pcs, f to m-xln, sandy pcs, scatt fossils, some dense pcs, calcite, SH, blk to green, grays



SH, gray to blk, green, limey pcs  
 MS, crm to tan, f-xln, dense, waxy pcs, some shaly, scatt fossils, dull fluor, NS Chert, opaque

SH, gray to blk, green, silty to sandy pcs

SH, blk, green, gray, red, silty to sandy, MS, off wht to crm, brn to tan pcs, f-xln to massive, hard, dense, NS, Chert, gray to wht

MS, crm to brn, f-xln to massive, m-gr oolitic/fossilif., gritty to silty pcs, hard, dull fluor, NS, poor moldic por.  
 SH, blk, grays, silty to limey pcs

MS-WS, crm to off wht, f-xln to chalky, some brn/tan pcs, f to m-xln, gritty, fossils scatt  
 SH, grays to green, silty pcs scatt

MS, crm to off wht, vf-xln to massive, some chalky pcs, firm to hard, some brittle, granular pcs, poor PP por., Chert, lt. gray, SH, grays

MS-WS, tan to crm, lt. gray, f-xln to vf-xln, gritty to granular, some fossils scatt, most massive to dense, dull fluor, NS, moldic por.  
 Chert, wht to tan, blocky

MS-WS, crm to tan, gray, glassy/frosted looking pcs, chalky in pt., f to mic-xln, massive pcs, fossilif. in pt., hard to brittle, NS, int-xln por.  
 SH, grays, sandy, greenish

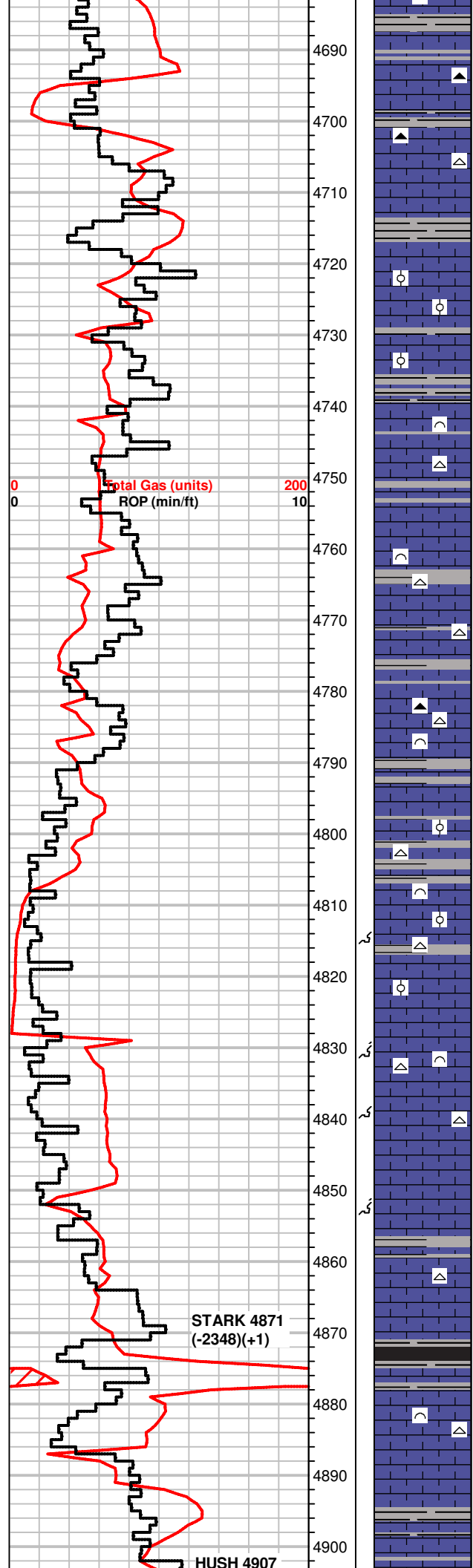
MS, lt. crm to tan, f-xln, mostly chalky, f to m-xln, gritty txt, fossils, some Chert, wht to gray, fossils, NS, rare moldic por.  
 SH, grays to greens, sandy in pt., lesser

MS-WS, gray to tan, some brn, f-xln to vf-xln, dense, massive pcs, scatt fossils, minerals(dark) in chalky mtrx, Chert, gray to tan, rare SH, grays

Trap Test

WS-MS, brn to gray, crm, mottled pcs, gritty, rare micro oolitic pcs, fossils, hard, some pcs friable, shaly in pt., NS, Chert, wht some SH, gray to green

Influx SH, blk, grays to greens, silty/limey in pt., MS-WS, crm to tan, some gray pcs, f-xln, waxy to m-xln, fossilif., dark minerals, dull fluor, NS



Fresh SH, gray to dk. gray, greenish, silty to sandy, platy, WS-MS, crm to tan, chalky mtrx, dense to friable/soft pcs, fossilif./shaly pcs, some massive, tite, Chert, wht, gray, brn, opaque

SH, dk. gray to gray

WS-MS, crm to tan, some brn, f-xln to m-xlnk, m-gr oolitic/sub oolitic pcs, fossilif., some massive/dense pcs, Chert, wht, tan, fossil/inclusions, SH, grays, waxy to silty

SH, grays, waxy, silty, A.A., incr. amt, some blk, sli. carb. MS-scatt WS, crm to tan, f-xln to chalky pcs, sub oolitic, some hard/dense pcs, shaly in pt., Chert, tan, wht, gray

SH, gray to dk. gray, greens, sandy to silty, MS-WS, crm to tan, f to m-xln, m-gr fossil/chert frgmts, firm to hard, some pcs chalky, Chert, wht, tan, fossilif.

SH, dk. gray to gray, A.A., lesser amt., MS-WS, tan to crm, some lt. gray, waxy to chalky, most f-xln, some dense, fossilif in soft mtrx, some Chert, brn, wht

Some SH, grays, green, platy MS, rare WS, lt. gray to tan, crm, chalky to vf-xln, some dense looking, firm to friable, rare f-gr, sub oolitic pcs, dull fluor, NS Chert, wht

Inc in SH, grays, platy, rare blk/green pcs, pyrite MS, crm to lt. gray, f-xln to vf-xln, firm, brittle, scatt fossils, chalky in pt., Chert, bone wht to opaque, fossils, moldic por.

SH, gray to green

WS-MS, scatt PS, crm to tan, off wht, rare brn, chalky to f-xln, soft to firm pcs, sub oolitic, rare dense pcs, some sandy, Chert, wht, moldic por.

WS-PS, crm to tan, f-xln to m-xln, firm to hard, some chalky, oolitic, m-gr, bioclastic pcs, dull fluor, NS, Chert, wht, tan, fossils

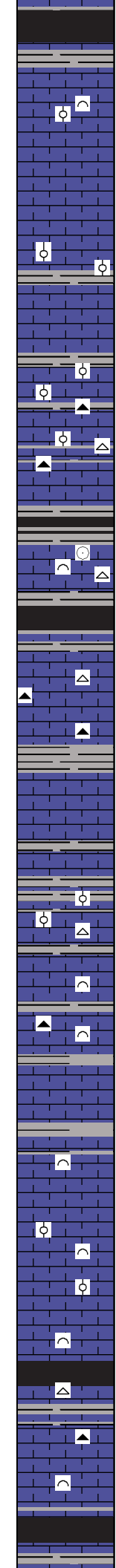
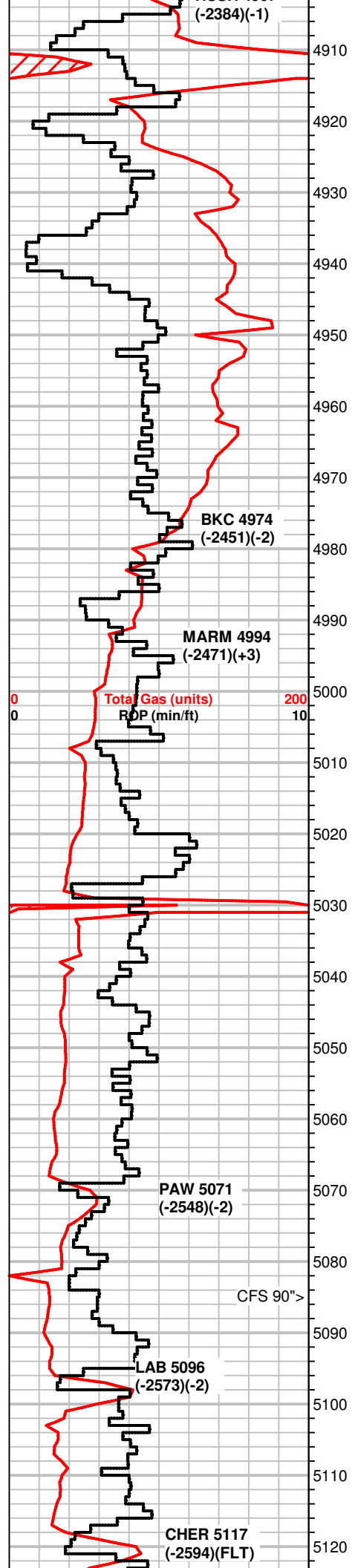
SH, blk, grays, carb.

MS-PS, crm to tan, chalky to f-xln, soft to firm, scatt fossils, some blocky, dense pcs, Chert, gray, fossils

some SH, blk to grays MS-WS, crm to tan, f-xln to chalky, rare m-gr ooids in soft calc mtrx, soft pcs, rare mottled pcs, fossilif., dull fluor, NS

230 Units, +170 UGK





SH, blk, grays, brn, rare limey in pt.

MS-WS, brn to crm, f-xln to massive pcs, dense to soft pcs, some chalky, scatt fossils, NS

MS-WS, crm to tan, brn, f-xln to m-xln, fossilif. to oolitic pcs, firm to hard, SH, blk to grays, brn

MS-PS, crm to tan, brn to gray, fxln to chalky txt, some pcs m-gr sub oolitic to oolitic, fossilif., hard to firm, brittle pcs, Chert, tan, brn, blk, SH, some blk, grays, silty, hard to soft pcs

MS-WS, brn to gray, crm pcs scatt, vf-xln, dense, silty pcs, scat fossils(Crinoids), bioclastic frgmnt pcs, NS, Chert, opaque, mineral specs, SH, blk, to gray, brn, hard, limey pcs

SH, blk to grays, silty, hard  
MS-WS, brn crm, f-xln to chalky, hard to firm, scatt fossils, shaly, sandy pcs, Chert, blk, brn

MS, gray to crm, f-xln gritty to earthy, hard, dense, some shaly pcs, massive in pt., Chert, blk, brn, SH, grays, silty

WS-MS, crm to tan, chalky to earthy, f-xln pcs, barren massive pcs to m-gr oolitic, dense to friable, rare glauc specs, SH, blk, to grays, silty

SH, gray, green, striated, silty to sandy, MS-WS, crm to off wht, chalky to m-gr oolitic, A.A., some milky wht oolitic w/ chalky mtrx, NS

PS-WS, off wht to crm, f-xln to chalky, m-gr oolitic to suboolitic/fossilif. pcs, some massive pcs, glauc, hard, NS, Chert, wht, fossils some HS, grays, greens, silty to waxy

PS-WS, A.A., influx MS, crm to tan, f-xln to mostly chalky pcs, hard, m-gr oolitic pcs rare, Chert, brn, SH, grays, brn

MS-WS, crm to tan, brn, f-xln to massive pcs, silty to waxy looking, some granular/oolitic pcs, firm to hard, shaly pcs/chalky, dull fluor, NS

MS-WS, off wht to crm, tan, chalky to vf-xln, some dense/massive, hard to brittle, scatt fossils, Chert, tan, brn, SH, green, gray

SH, blk to grays, carb, WS-MS, tan to crm, vf-xln to f-xln, hard, dense, scatt fossils, suboolitic pcs, Chert, wht, fossils, dull mineral fluor, NS

MS, crm to off wht, chalky to earthy, hard to brittle pcs scatt, some fossils rare sub oolitic pcs, Chert, wht

MS-WS, crm to tan, f-xln to m-gr oolitic, firm to hard, brittle, chalky to earthy, dull fluor, NS, SH, grays, green, silty

SH, blk to grays  
MS, crm to brn, f-xln, some chalky, vf-xln, subb oolitic pcs, soft to firm, some fossils, Chert, blk, gray, wht

MS, gray to crm, f-xln, massive, some chalky pcs, most dense, scatt fossil fgrmts, 1 pcs w/ bright fluor on edge, v. faint cut, no odor, chert, wht

SH blk to gray, green, carb  
MS-WS, brn to crm, f-xln to vf-xln, dense, brittle, chalky pcs scatt.

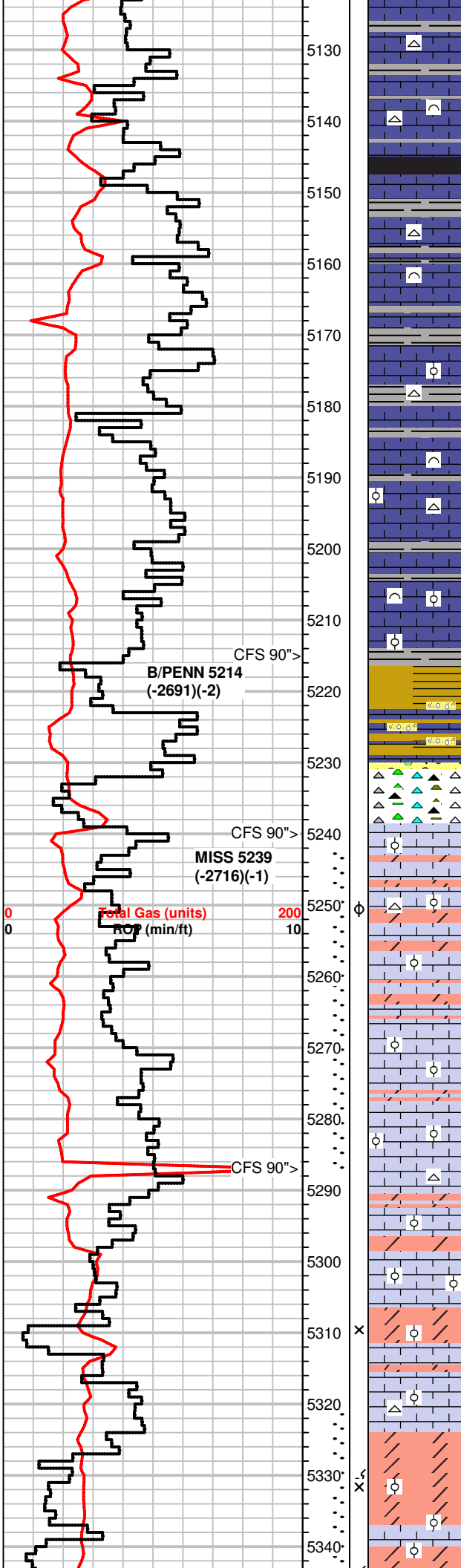
250 Units, +190 UGK

Trap Test, Equipment Test

57 Units, +22 UGK, shale gas

+50 UGK, Shale gas

+55 UGK, Shale gas



some fossils, Chert, wht,

Fresh SH, blk, green, grays, MS, crm to tan, brn, f-xln to chalky, firm to hard, fossilif., Chert, wht, NS

MS, crm to tan, some gray, f-xln to mic-xln, dense to chalky pcs, brittle, fractures, sub oolitic pcs, no odor, NS, sli. influx SH, blk

SH, blk to gray, green, carb., MS, brn to tan, f to m-xln, chalky to massive pcs scatt, firm to soft, rare dense, scatt fossils, NS, Chert, wht

SH, blk to grays, MS-WS, gray to crm, brn, f-xln silty, chalky pcs, rare mottled pcs, scatt m-gr ooids in chalky mtrx

MS-WS, crm to brn, gray, silty to chalky in pt., f-xln oolitic/fossilif., soft, carrying SH, gray to blk, pyrite/carb.

WS, brn to crm, gray, chalky to f-xln A.A., fossilif pcs scatt, firm to brittle, some SH, grays

MS-WS, crm to tan, brn, most f-xln chalky, firm, some mic-xln, dense massive pcs, scatt fossils in chalky mtrx, SH, blk, gray, sandy pcs

SH, blk to green, fresh, silty to sandy  
MS, brn to tan, vf-xln to massive txt, dense, brittle, rare fossils, dull fluor, NS, Chert, wht

MS-WS, crm to tan, brn, f-xln to mic-xln, dense to firm pcs, fossils/f-gr oolitic/bioclastic pcs scatt, dull fluor, 1 pc w/ bright fluor, no cut, rare dry pcs w/ partial sat. sli stn(3 pcs), no odor

SH, vari-colored, mostly grays to dk. gray, sea green, mustard yellow, maroon, waxy, silty in pt.  
MS, brn to tan, crip to mic-xln, dense, scatt oolitic to forams,

SH, varicolored, sandy, f-gr Qtz grs., MS-WS, crm to tan, mic to f-xln, chalky in pt, mose dense, massive, some m-gr dark oolitic pcs, yellow fluor, rare pcs w/ oil stn in int-xln por., inst strmg to milky cut, Chert, wht to tan, gray, blk, fresh to sli. wthrd pcs, fossilif., rare pcs w/ stn in vuggy to int-xln por., milky to streaming cut, faint odor in 60" bag.

MS-WS, crm to tan, f-xln to massive txt, rare sub oolitic pcs, scatt fossils, rare Dolo, brn, f-xln, f-gr oolitic(2pcs), sat/stn, inst cut, faint odor in bag

MS-WS, rare PS, off wht to crm, tan, chalky to f-xln, some crip-xln, m-gr oolitic in tite calc. mtrx, dull fuor, NS

WS-PS, off wht to crm, m-gr oolitic, f-xln, dull fluor, Dolo, brn, some w/ fine sugary txt, co-gr inclusions, brn stn, bleeding gas, inst cut,

MS-WS, crm to tan, off wht, f-xln to chalky, scatt massive pcs, most sob oolitic to oolitic/fossilif., dense to friable, dull fluor, NS  
Chert, wht, tan

MS-WS, crm to tan, f-xln sub oolitic, chalky txt in pt., Chert, wht, fossils

MS-PS, off wht to tan, chalky to f-xln txt, firm, oolitic to sub oolitic pcs, rare glauc specs, NS, scatt Dolo pcs, f-xln, sucrosic, partial stn(<25% of 1 pc), Chert, wht

MS-WS< crm to tan, lt. gray, dolomititic in pt., Vf-xln to f-xln, sucrosic looking pcs, mostly chalky, m-gr oolitic, mineral fluor, NS

Dolo, crm to brn, f-xln some m-xln, sucrosic sugary txt, m-gr, firm to hard, some friable, rare stn, very spotty bright fluor, inst. cut from scatt pcs, v. faint odor

MS-PS, crm to of wht, f-xln, m-gr oolitic, firm, chalky, NS

Dolo, brn to crm, f-xln, sucrosic txt, hard to firm, dull min. fluor, NS  
vuggy por.

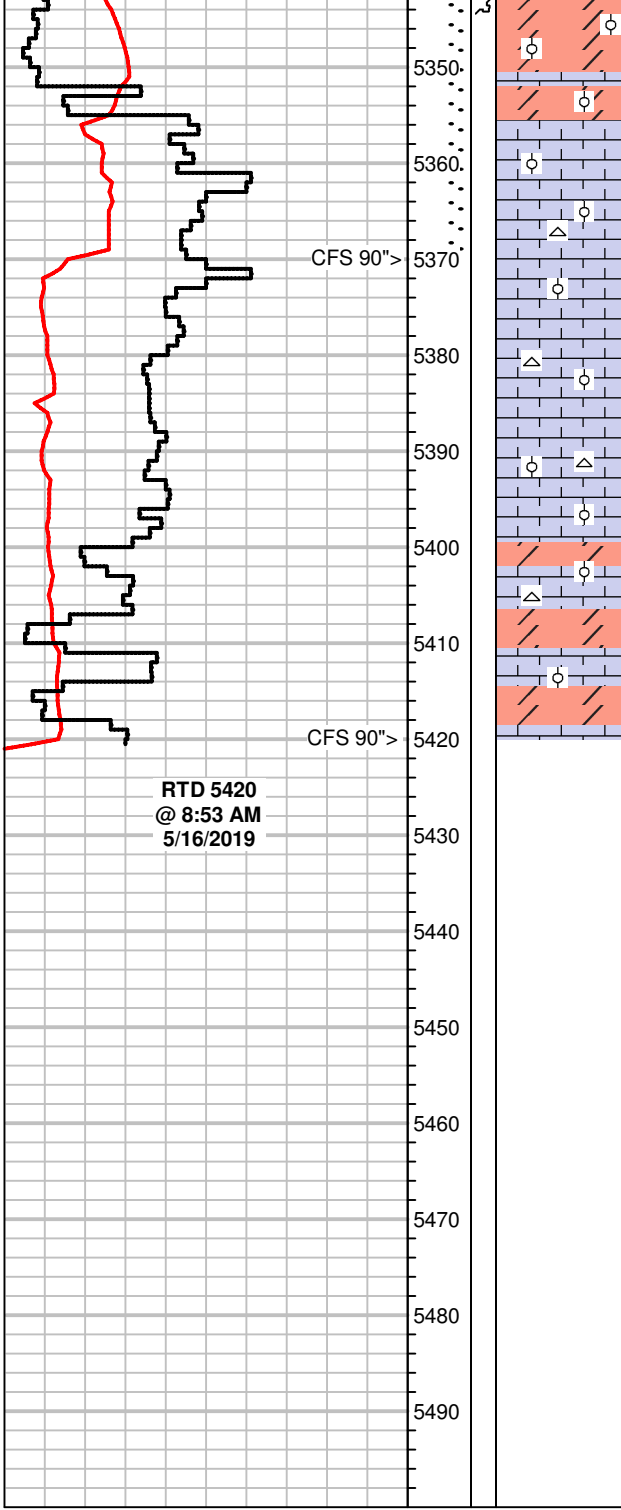
Dolo, tan to brn, f-xln to m-xln sucrosic pcs, some fossilif to oolitic, dark inclusions, dull fluor, NS

70 Units TG, +30 UGK

**DST #1 524-5287**  
**Mississippian**  
 30-60-60-120  
 FB, BOB 11min, blt to 35 inches  
 NBB  
 SB BOB 2min, blt to 30 inches  
 Rec:  
 305' GIP  
 10' SGCM(5g,95m)  
 IH 2640#  
 IF 21-17#  
 ISIP 316#  
 FF 14-82#  
 FSIP 333#  
 FH 2584#  
 Temp 117°F  
 Pipe Strap.  
 1.52 Short to Board

+15 UGK, no recycle

**DST #2 5320-5370**  
**Mississippi**  
 30-60-60-120  
 FB, Blt to 10 inches  
 NBB  
 FB, BOB 55 min, blt to 12.5 inches  
 NBB  
 Rec: TF 402'  
 30' MCW(20m,80w)  
 124' MCW(10m,90w)



Dolo, brn to tan, f- to m-xln, sucrosic txt, some pcs f to m-gr oolitic, black to gray inclusions, mineral fluor, NS

WS-PS, crm to off wht, chalky to vf-xln, soft to firm, m-gr oolitic, some in soft chalky mtrx, rare glauc, dull fluor, NS

WS-PS, inc. amt, wht to off wht, fossilif to m-gr oolitic, NS, rare Chert, wht

MS-WS, off wht to crm, f-xln pcs scatt, most chalky, soft to brittle/hard pcs, fossilif to m-gr oolitic. dull fluor, NS  
Chert, wht, opaque, oolitic

MS-WS, PS, crm to off wht, oolitic, m-gr, chalky to f-xln mtrx, some hard, most soft to firm, NS

Dolo, tan to brn, vf-xln, fn-sucrosic txt, firm to hard, dull mineral fluor, NS

MS-WS, off wht to crm, f-xln to chalky, oolitic, NS

Dolo, crm to brn, vf-xln, fn-sucrosic, hard to dense, min. fluor, NS

248' Water  
IH 2637#  
IF 27-99#  
ISIP 1190#  
FF 104-220#  
FSIP 1187#  
FH 2598#  
Temp 120°F  
API Rw .12 @ 75°F  
Cl 60,000ppm