



Liberal Yard #1717 - Phone 620-624-2277 - 1700 S. Country Estates Road, Liberal KS 67901

**PRESSURE PUMPING Job Log**

|                    |                           |                  |                             |                   |   |
|--------------------|---------------------------|------------------|-----------------------------|-------------------|---|
| Customer:          | O'Brien Energy            | Cement Pump No.: | 38750, 19919 3.5Hrs.        | Operator TRK No.: | 96816                                   |
| Address:           | 18 Congress St. Suite 207 | Ticket #:        | 1718 19447 L                | Bulk TRK No.:     | 14355, 37724 Angel<br>33021, 14284 Marc |
| City, State, Zip:  | Portsmouth NH 03801       | Job Type:        | Z42 - Cement Surface Casing |                   |   |
| Service District:  | 1718 - Liberal, Ks.       | Well Type:       | OIL                         |                   |   |
| Well Name and No.: | Clayton 7-28              | Well Location:   | 28,33,29                    | County:           | Meade State: Ks                         |

| Type of Cmt         | Sacks | Additives                                    | Truck Loaded On    |       |      |
|---------------------|-------|--|--------------------|-------|------|
| A-Con' Blend        | 375   | 3% Calcium Chloride, 1/4# Polyflake, .2%WCA1 | 14355, 37724 Angel | Front | Back |
| Premium Plus Cement | 150   | 2% Calcium Chloride, 1/4# Polyflake          | 33021, 14284 Marc  | Front | Back |
|                     |       |  |                    | Front | Back |

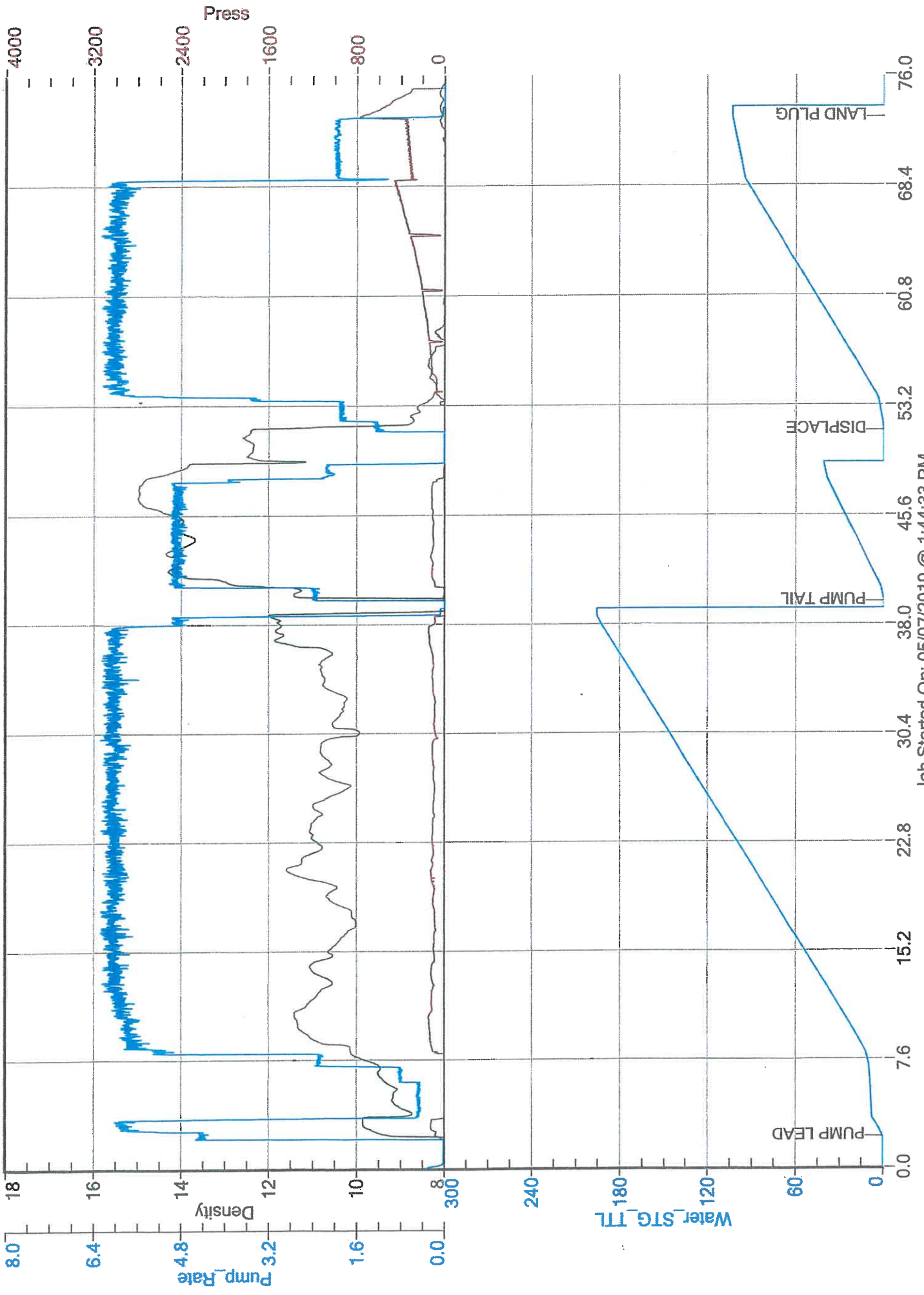
| Lead/Tail:   | Weight #1 Gal. | Cu/Ft/sk | Water Requirements | CU. FT. | Man Hours / Personnel |    |
|--------------|----------------|----------|--------------------|---------|-----------------------|----|
| <b>Lead:</b> | 11.4           | 2.95     | 18.1               | 1106.25 | TT Man Hours:         | 34 |
| <b>Tail:</b> | 14.8           | 1.34     | 6.33               | 201     | # of Men on Job:      | 5  |

| Time (am/pm) | BPM | Volume (BBLs) | Pumps |   | Pressure (PSI) |        | Description of Operation and Materials |
|--------------|-----|---------------|-------|---|----------------|--------|--|
|              |     |               | T     | C | Tubing         | Casing |  |
| 12:00        |     |               |       |   |                |        | ON LOCATION & SAFETY MEETING           |
| 12:15 PM     |     |               |       |   |                |        | RIG UP                                 |
| 1:00 PM      |     |               |       |   |                |        | RIG TO CIRCULATE                       |
| 1:30 PM      |     |               |       |   |                |        | RIG TO P.T.                            |
| 13:46        | 6   | 197.0 slurry  |       |   |                | 120    | PUMP 375SX LEAD @ 11.4#                |
| 2:24 PM      | 6   | 35.7 slurry   |       |   |                | 90     | PUMP 150SX TAIL @ 14.8#                |
| 14:34        |     |               |       |   |                |        | SHUTDOWN / DROP PLUG                   |
| 14:35        | 6   | 10            |       |   |                | 80     | DISPLACE                               |
| 14:41        | 6.1 | 20            |       |   |                | 120    | CEMENT RETURNS                         |
|              | 6   | 30            |       |   |                | 150    |  |
|              | 6   | 40            |       |   |                | 190    |  |
|              | 6   | 50            |       |   |                | 220    |  |
|              | 6   | 60            |       |   |                | 270    |  |
|              | 6   | 70            |       |   |                | 340    |  |
|              | 6   | 80            |       |   |                | 410    |  |
| 14:53        | 6   | 84            |       |   |                | 450    | SLOW RATE TO 2.0BPM @ 300PSI           |
|              | 2   | 90            |       |   |                | 320    |  |
| 14:58        | 2   | 94.7          |       |   |                | 360    | LAND PLUG / PRESSURE UP TO 770PSI      |
| 15:00        |     |               |       |   |                |        | RELEASE BACK --- FLOAT HELD            |
|              |     |               |       |   |                |        | JOB COMPLETE                           |

|                 |            |       |  |            |          |                |  |
|-----------------|------------|-------|--|------------|----------|----------------|--|
| Size Hole       | 12 1/4"    | Depth |  |            | TYPE     | Plug Container |  |
| Size & Wt. Csg. | 8 5/8" 24# | Depth |  | New / Used | Packer   | Depth          |  |
| Landing Press.  | 316.1 psi  | Depth |  |            | Retainer | Depth          |  |
| Shoe Jt.        | 41.07'     | Type  |  |            | Perfs    | CIBP           |  |

|                     |                       |             |
|---------------------|-----------------------|-------------|
| Customer Signature: | Basic Representative: | Daniel Beck |
|                     | Basic Signature:      |             |
|                     | Date of Service:      | 5/7/2019    |

O'Brien Energy  
Clayton#7-28



Job Started On: 05/07/2019 @ 1:44:33 PM



Liberal Yard #1717 - Phone 620-624-2277 - 1700 S. Country Estates Road, Liberal KS 67901

**PRESSURE PUMPING**

**Job Log**


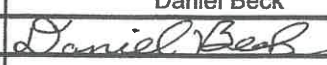
|                    |                           |                  |                                |                   |                               |
|--------------------|---------------------------|------------------|--------------------------------|-------------------|-------------------------------|
| Customer:          | Obrien Energy             | Cement Pump No.: | 38750, 19919 4.5Hrs.           | Operator TRK No.: | 96816                         |
| Address:           | 18 Congress St. Suite 207 | Ticket #:        | 1718 19448 L                   | Bulk TRK No.:     | 27808, 19883 Sam 27808, 19883 |
| City, State, Zip:  | Portsmouth NH 03801       | Job Type:        | Z42 - Cement Production Casing |                   |                               |
| Service District:  | 1718 - Liberal, Ks.       | Well Type:       | OIL                            |                   |                               |
| Well Name and No.: | Clayton 7-28              | Well Location:   | 28,33,29                       | County:           | Meade State: Ks               |

| Type of Cmt | Sacks | Additives   | Truck Loaded On  |       |      |
|-------------|-------|---|------------------|-------|------|
| 60/40 Poz   | 50    |   | 27808, 19883 Sam | Front | Back |
| AA2         | 185   | 5% W-60, 10% Salt, .6% C-17, 1/4# Defoamer, 5# Gilsomite, 1/3#/Sk OWB | 27808, 19883     | Front | Back |
| 60/40 Poz   | 50    | Rat & Mouse   |                  | Front | Back |

| Lead/Tail:   | Weight #1 Gal. | Cu/Ft/sk | Water Requirements | CU. FT. | Man Hours / Personnel |      |
|--------------|----------------|----------|--------------------|---------|-----------------------|------|
| <b>Lead:</b> | 12             | 2.08     | 11.89              | 104     | TT Man Hours:         | 25.5 |
| <b>Tail:</b> | 14.8           | 1.52     | 6.7                | 281.2   | # of Men on Job:      | 3    |

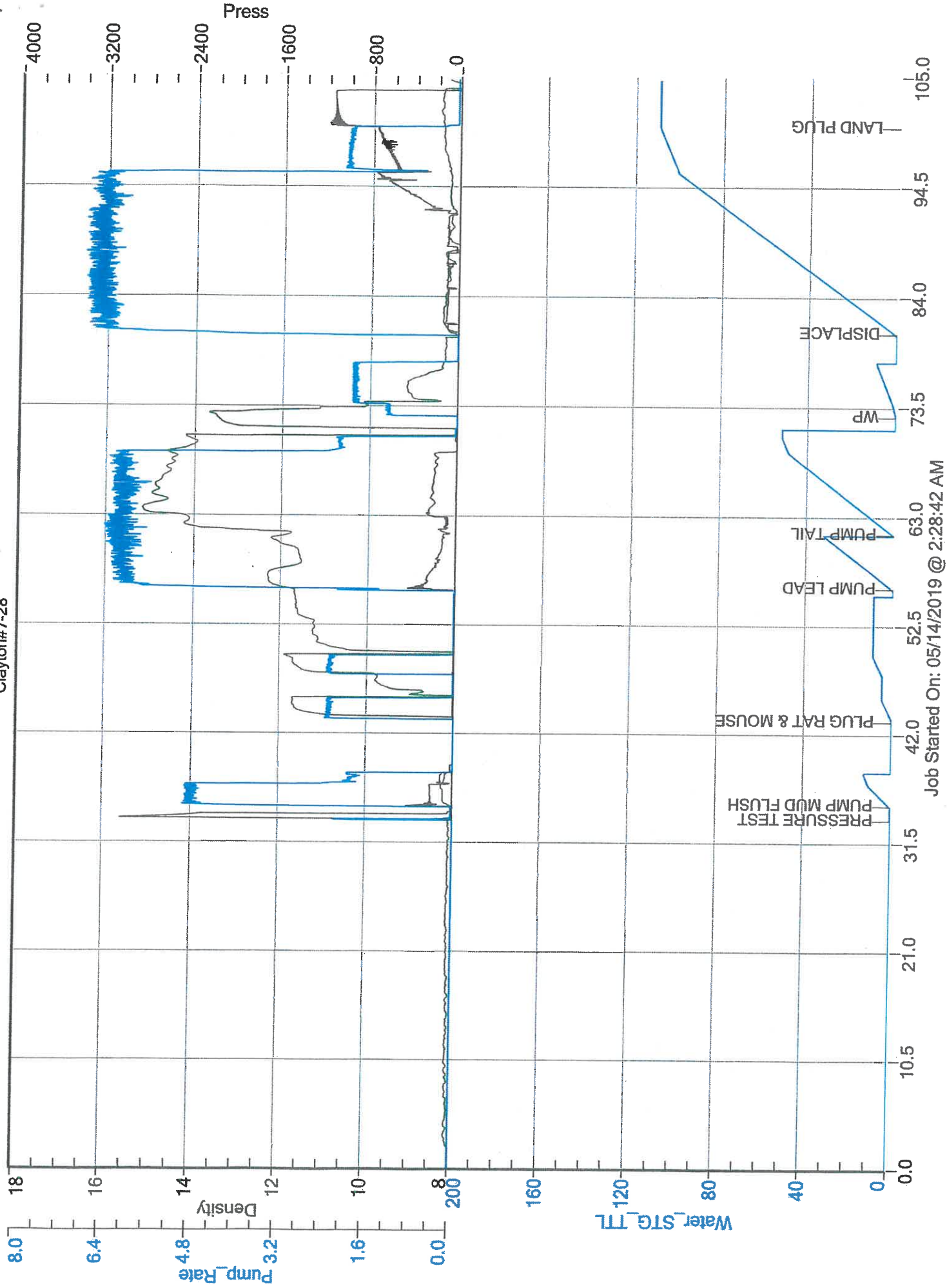
| Time (am/pm) | BPM | Volume (BBLS) | Pumps |   | Pressure(PSI) |        | Description of Operation and Materials |
|--------------|-----|---------------|-------|---|---------------|--------|--|
|              |     |               | T     | C | Tubing        | Casing |  |
| 1:40         |     |               |       |   |               |        | ON LOCATION & SAFETY MEETING           |
| 1:45         |     |               |       |   |               |        | RIG TO CIRCULATE                       |
| 3:00 AM      |     |               |       |   |               |        | RIG TO PT                              |
| 3:02 AM      |     |               |       |   |               |        | PRESSURE TEST TO 2870PSI               |
| 3:04 AM      | 5   | 11.9          |       |   |               | 140    | PUMP 500 GALLONS MUD FLUSH             |
| 3:12         | 2.3 | 18.5 slurry   |       |   | 10            |        | PLUG RAT & MOUSE W/ 50SX               |
| 3:24         | 6   | 18.5 slurry   |       |   |               | 290    | PUMP LEAD 50SX @ 12#                   |
| 3:30 AM      | 6   | 50.0 slurry   |       |   |               | 120    | ON LOCATION & SAFETY MEETING           |
| 3:39         |     |               |       |   |               |        | SHUTDOWN / DROP PLUG / WP              |
| 3:49         | 6.5 | 10            |       |   |               | 110    | DISPLACE W/ KCL WATER                  |
|              | 6.5 | 20            |       |   |               | 100    |  |
|              | 6.5 | 30            |       |   |               | 100    |  |
|              | 6.5 | 40            |       |   |               | 100    |  |
|              | 6.5 | 50            |       |   |               | 110    |  |
|              | 6.5 | 60            |       |   |               | 110    |  |
|              | 6.5 | 70            |       |   |               | 260    |  |
|              | 6.5 | 80            |       |   |               | 480    |  |
|              | 6.5 | 90            |       |   |               | 710    |  |
| 4:05         | 6.5 | 91            |       |   |               | 720    | SLOW RATE TO 2.0BPM @ 590PSI           |
|              | 2   | 100           |       |   |               | 760    |  |
| 4:09         | 2   | 101           |       |   |               | 790    | LAND PLUG PRESSURE UP TO 1200PSI       |
| 4:12         |     |               |       |   |               |        | RELEASE BACK --- FLOAT HELD            |
|              |     |               |       |   |               |        | JOB COMPLETE                           |

|                 |              |       |       |            |          |                |  |
|-----------------|--------------|-------|-------|------------|----------|----------------|--|
| Size Hole       | 7 7/8"       | Depth |       |            | TYPE     | Plug Container |  |
| Size & Wt. Csg. | 4 1/2" 10.5# | Depth | 6392' | New / Used | Packer   | Depth          |  |
| Landing Press.  | 727.1psi     | Depth |       |            | Retainer | Depth          |  |
| Shoe Jt.        | 21.25'       | Type  |       |            | Perfs    | CIBP           |  |

|   |                       |   |
|---|-----------------------|---|
| Customer Signature:  | Basic Representative: | Daniel Beck   |
|   | Basic Signature:      |  |
|   | Date of Service:      | 5/14/2019   |



# OBrein Energy Clayton#7-28



Job Started On: 05/14/2019 @ 2:28:42 AM