

KANSAS CORPORATION COMMISSION
OIL & GAS CONSERVATION DIVISION

TEMPORARY ABANDONMENT WELL APPLICATION

OPERATOR: License#
Name:
Address 1:
Address 2:
City: State: Zip:
Contact Person:
Phone:
Contact Person Email:
Field Contact Person:
Field Contact Person Phone:

API No. 15-
Spot Description:
Sec. Twp. S. R.
GPS Location: Lat: Long:
Datum:
County: Elevation:
Lease Name: Well #:
Well Type:
SWD Permit #: ENHR Permit #:
Gas Storage Permit #:
Spud Date: Date Shut-In:

Table with 7 columns: Conductor, Surface, Production, Intermediate, Liner, Tubing. Rows include Size, Setting Depth, Amount of Cement, Top of Cement, Bottom of Cement.

Casing Fluid Level from Surface: How Determined? Date:
Casing Squeeze(s): to w / sacks of cement, to w / sacks of cement. Date:
Do you have a valid Oil & Gas Lease? Yes No
Depth and Type: Junk in Hole at Tools in Hole at Casing Leaks: Yes No Depth of casing leak(s):
Type Completion: ALT. I ALT. II Depth of: DV Tool: w / sacks of cement Port Collar: w / sack of cement
Packer Type: Size: Inch Set at: Feet
Total Depth: Plug Back Depth: Plug Back Method:

Geological Data:

Table with 4 columns: Formation Name, Formation Top, Formation Base, Completion Information. Rows 1 and 2.

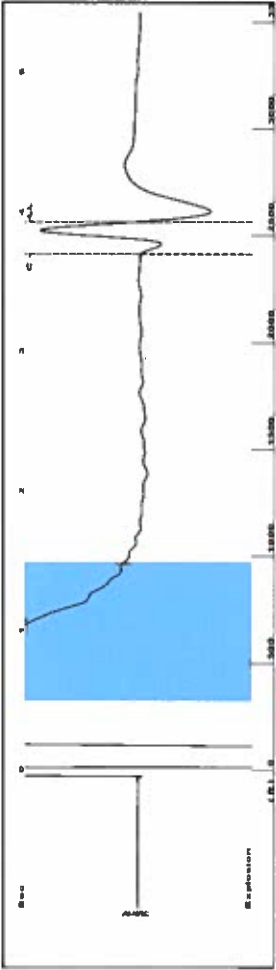
UNDER PENALTY OF PERJURY I HEREBY ATTEST THAT THE INFORMATION CONTAINED HEREIN IS TRUE AND CORRECT TO THE BEST OF MY KNOWLEDGE

Submitted Electronically

Do NOT Write in This Space - KCC USE ONLY
Date Tested: Results: Date Plugged: Date Repaired: Date Put Back in Service:
Review Completed by: Comments:
TA Approved: Yes Denied Date:

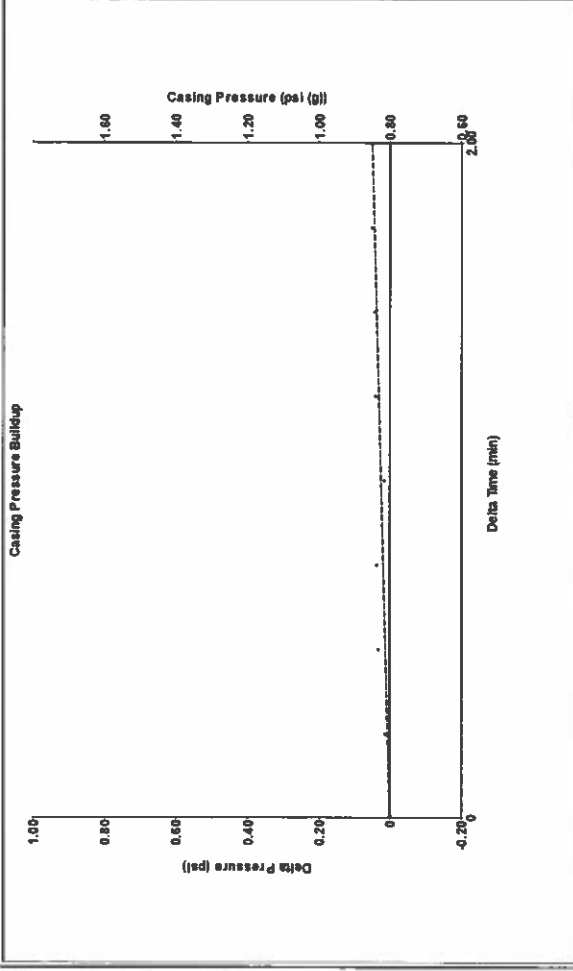
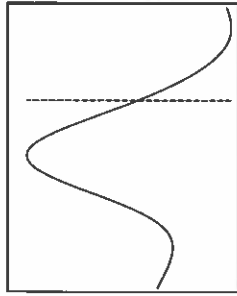
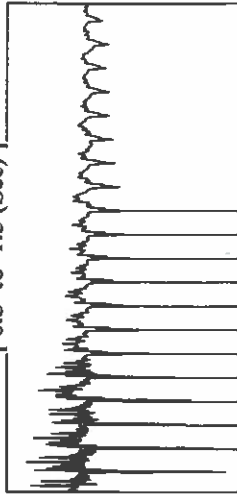
Mail to the Appropriate KCC Conservation Office:

Table with 2 columns: Office Address, Phone. Rows for District Office #1, #2, #3, #4.



Filter Type High Pass Automatic Collar Count Yes Time 3.929 sec
 Manual Acoustic Veloc 1293.88 ft/s Manual JTS/sec 20.4082 Joints 80.8108 Jts
 Depth 2561.70 ft

1.05 to 1.5 (Sec)

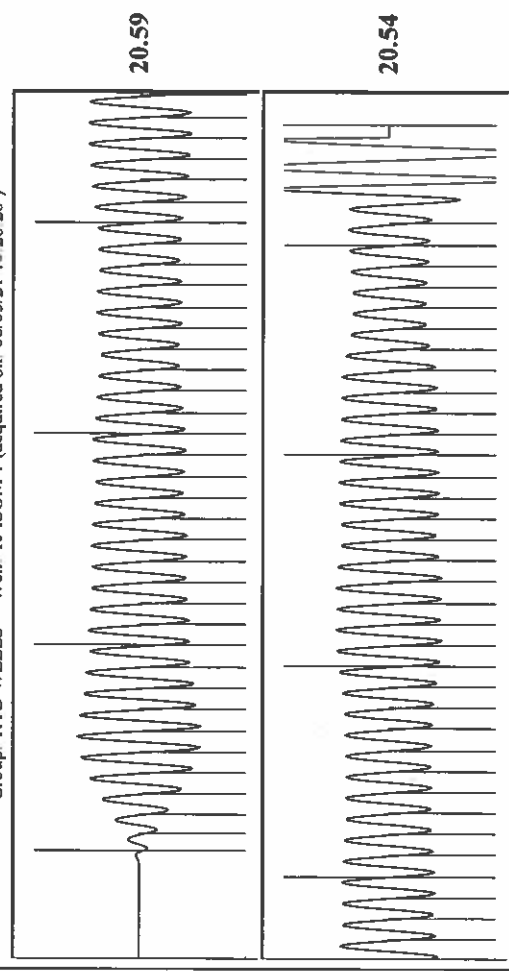


Change in Pressure 0.05 psi PT9424 Range
 Change in Time 2.00 min

Analysis Method: Automatic

| | | | |
|-----------------------|----------------|--------------------------------------|-------------|
| Production | Potential | Casing Pressure | 0.8 psi (g) |
| Oil | -. -. BBL/D | Casing Pressure Buildup | 0.1 psi |
| Water | -. -. BBL/D | Gas/Liquid Interface Pressure | 1.8 psi (g) |
| Gas | -. -. Mscf/D | Liquid Level Depth | 2561.70 ft |
| IPR Method | Vogel | Pump Intake Depth | -. -. ft |
| PBHP/SBHP | -. -. 0.0 | Formation Depth | 2648.00 ft |
| Production Efficiency | | Acoustic Velocity | 1304 ft/s |
| Oil | 40 deg API | Formation Submergence | 86 ft |
| Water | 1.05 Sp.Gr H2O | Total Caseous Liquid Column HT (TVD) | 86 ft |
| Gas | 0.71 Sp.Gr AIR | Equivalent Gas Free Liquid HT (TVD) | |
| Acoustic Test | | | |

| | | |
|---------------|------------------|----------|
| Producing | Annular Gas Flow | 1 Mscf/D |
| | % Liquid | 99 % |
| Pump Intake | -. -. psi (g) | |
| Producing BHP | 40.8 psi (g) | |
| Static BHP | -. -. psi (g) | |



Acoustic Velocity 1304 ft/s Joints counted 71
 Joints Per Second 20.5678 Joints to liquid level 80.8108
 Depth to liquid level 2561.7 ft Filter Width 18.4082
 Automatic Collar Count Yes Time to 1st Collar 0.248 3.7

August 05, 2021

Katherine McClurkan
Merit Energy Company, LLC
13727 Noel Road, Suite 1200
Dallas, TX 75240-7362

Re: Temporary Abandonment
API 15-189-00670-00-01
Isom T J 1
NW/4 Sec.12-34S-39W
Stevens County, Kansas

Dear Katherine McClurkan:

"Your temporary abandonment (TA) application for the well listed above has been approved. In accordance with K.A.R. 82-3-111 the TA status of this well will expire 08/05/2022.

- * If you return this well to service or plug it, please notify the District Office.
- * If you sell this well you are required to file a Transfer of Operator form, T-1.
- * If the well will remain temporarily abandoned, you must submit a new TA application, CP-111, before 08/05/2022.

You may contact me at the number above if you have questions.

Very truly yours,

Michael Maier"