

KANSAS CORPORATION COMMISSION
OIL & GAS CONSERVATION DIVISION

TEMPORARY ABANDONMENT WELL APPLICATION

OPERATOR: License#
Name:
Address 1:
Address 2:
City: State: Zip:
Contact Person:
Phone:
Contact Person Email:
Field Contact Person:
Field Contact Person Phone:

API No. 15-
Spot Description:
Sec. Twp. S. R.
feet from N / S Line of Section
feet from E / W Line of Section
GPS Location: Lat: , Long:
Datum: NAD27 NAD83 WGS84
County: Elevation: GL KB
Lease Name: Well #:
Well Type: Oil Gas OG WSW Other:
SWD Permit #: ENHR Permit #:
Gas Storage Permit #:
Spud Date: Date Shut-In:

Table with 7 columns: Conductor, Surface, Production, Intermediate, Liner, Tubing. Rows include Size, Setting Depth, Amount of Cement, Top of Cement, Bottom of Cement.

Casing Fluid Level from Surface: How Determined? Date:
Casing Squeeze(s): to w / sacks of cement, to w / sacks of cement. Date:
Do you have a valid Oil & Gas Lease? Yes No
Depth and Type: Junk in Hole at Tools in Hole at Casing Leaks: Yes No Depth of casing leak(s):
Type Completion: ALT. I ALT. II Depth of: DV Tool: w / sacks of cement Port Collar: w / sack of cement
Packer Type: Size: Inch Set at: Feet
Total Depth: Plug Back Depth: Plug Back Method:

Geological Data:

Table with 4 columns: Formation Name, Formation Top, Formation Base, Completion Information. Rows 1 and 2.

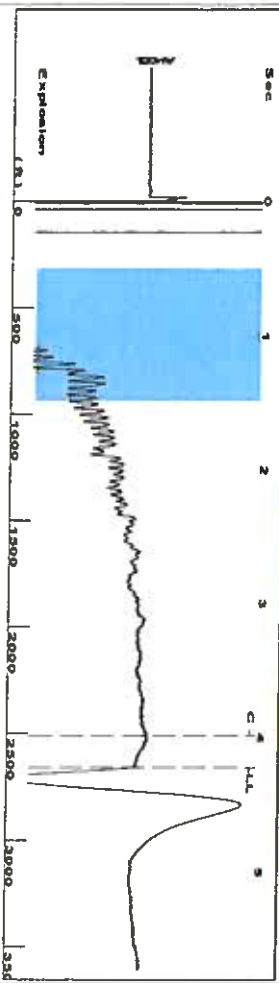
UNDER PENALTY OF PERJURY I HEREBY ATTEST THAT THE INFORMATION CONTAINED HEREIN IS TRUE AND CORRECT TO THE BEST OF MY KNOWLEDGE

Submitted Electronically

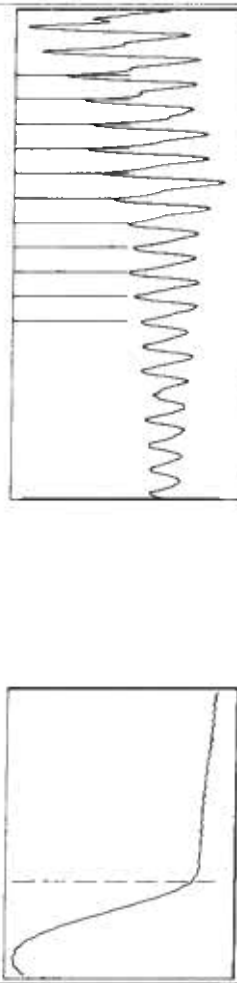
Do NOT Write in This Space - KCC USE ONLY
Date Tested: Results: Date Plugged: Date Repaired: Date Put Back in Service:
Review Completed by: Comments:
TA Approved: Yes Denied Date:

Mail to the Appropriate KCC Conservation Office:

Table with 3 columns: District Office #, Address, Phone. Rows 1-4.



Filter Type: High Pass  
 Manual Acoustic Vel: 1262.95 ft/s  
 Automatic Collar Count: Yes  
 Manual JTS/sec: 19.9203  
 Time: 4.224 sec  
 Joints: 83.9356 JIS  
 Depth: 2660.76 ft



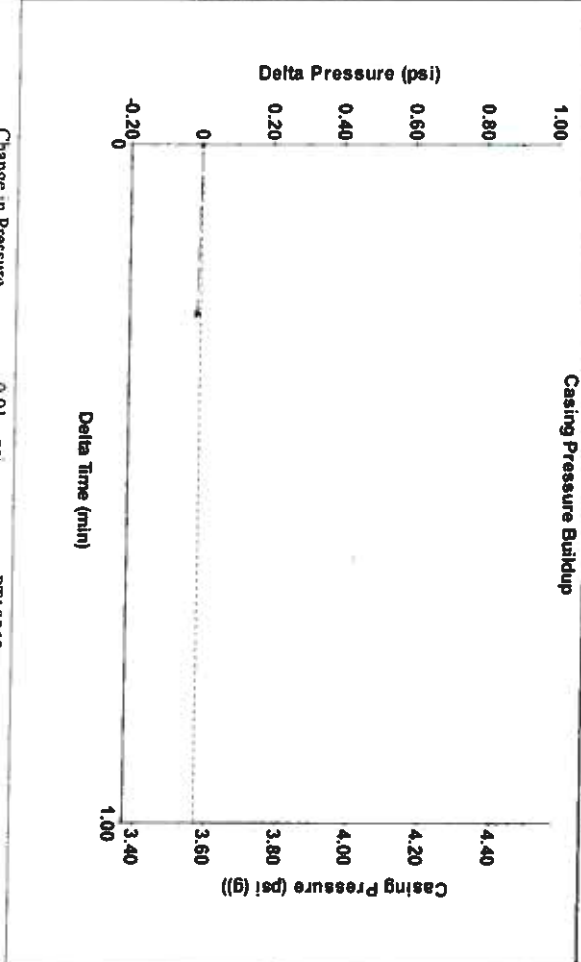
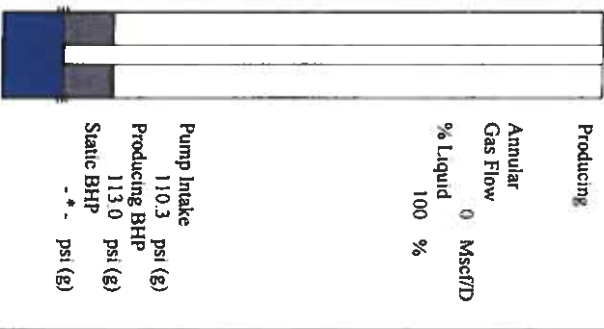
Analysis Method: Automatic

Production	Potential	Casing Pressure	Producing
Oil: -*-	BBL/D	3.6 psi (g)	Annular
Water: -*-	BBL/D	Casing Pressure Buildup	Gas Flow
Gas: -*-	Mscf/D	-0.010 psi	% Liquid
IPR Method	Vogel	0.25 min	Mscf/D
PBHP/SBHP	Production Efficiency	Gas/Liquid Interface Pressure	%
	0.0	4.8 psi (g)	100 %
Oil: 40 deg/API	Liquid Level Depth		
Water: 1.05 Sp.Gr./H2O	2660.76 ft		
Gas: 0.74 Sp.Gr./AIR	Pump Intake Depth		
Acoustic Velocity	2972.00 ft		
1259.83 ft/s	Formation Depth		
	2978.00 ft		

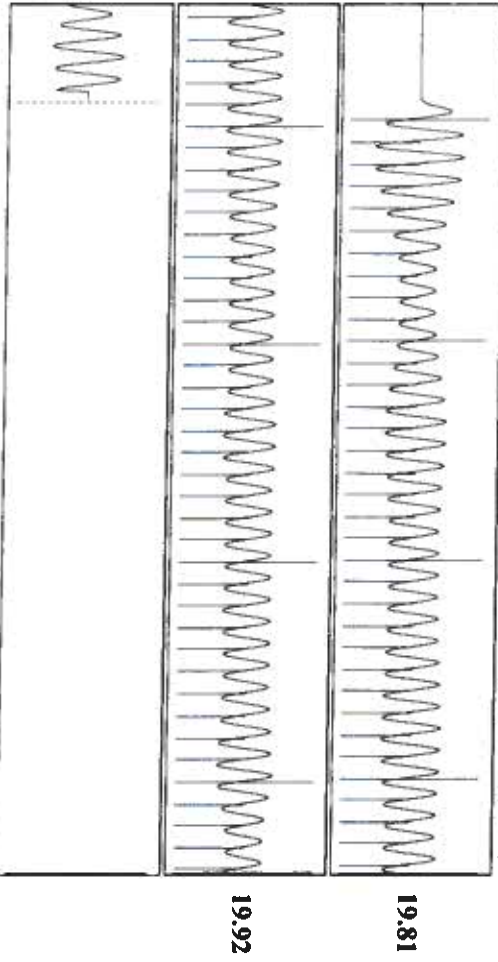
Formation Submergence	311 ft
Total Gaseous Liquid Column HT (TVD)	311 ft
Equivalent Gas Free Liquid HT (TVD)	311 ft

Acoustic Test

Tim Fydenhall-Fluid Levic Technician



Change in Pressure: -0.01 psi  
 Change in Time: 0.25 min  
 PT18868  
 Range: 0-7 psi



Acoustic Velocity	1259.83 ft/s	Joints counted	74
Joints Per Second	19.8711 jts/sec	Joints to liquid level	83.9356
Depth to liquid level	2660.76 ft	Filter Width	17.9203
Automatic Collar Count	Yes	Time to 1st Collar	0.264
			3.988

August 05, 2021

Katherine McClurkan  
Merit Energy Company, LLC  
13727 Noel Road, Suite 1200  
Dallas, TX 75240-7362

Re: Temporary Abandonment  
API 15-067-20415-00-00  
English G 2  
NE/4 Sec.04-28S-35W  
Grant County, Kansas

Dear Katherine McClurkan:

"Your temporary abandonment (TA) application for the well listed above has been approved. In accordance with K.A.R. 82-3-111 the TA status of this well will expire 08/05/2022.

- \* If you return this well to service or plug it, please notify the District Office.
- \* If you sell this well you are required to file a Transfer of Operator form, T-1.
- \* If the well will remain temporarily abandoned, you must submit a new TA application, CP-111, before 08/05/2022.

You may contact me at the number above if you have questions.

Very truly yours,

Michael Maier"