

KANSAS CORPORATION COMMISSION
OIL & GAS CONSERVATION DIVISION

TEMPORARY ABANDONMENT WELL APPLICATION

OPERATOR: License#
Name:
Address 1:
Address 2:
City: State: Zip:
Contact Person:
Phone:
Contact Person Email:
Field Contact Person:
Field Contact Person Phone:

API No. 15-
Spot Description:
Sec. Twp. S. R.
GPS Location: Lat, Long
Datum: NAD27, NAD83, WGS84
County: Elevation:
Lease Name: Well #:
Well Type: Oil, Gas, OG, WSW, Other
SWD Permit #: ENHR Permit #:
Gas Storage Permit #:
Spud Date: Date Shut-In:

Table with 7 columns: Conductor, Surface, Production, Intermediate, Liner, Tubing. Rows include Size, Setting Depth, Amount of Cement, Top of Cement, Bottom of Cement.

Casing Fluid Level from Surface: How Determined? Date:
Casing Squeeze(s): to w / sacks of cement, to w / sacks of cement. Date:
Do you have a valid Oil & Gas Lease? Yes No
Depth and Type: Junk in Hole at Tools in Hole at Casing Leaks: Yes No Depth of casing leak(s):
Type Completion: ALT. I ALT. II Depth of: DV Tool: w / sacks of cement Port Collar: w / sack of cement
Packer Type: Size: Inch Set at: Feet
Total Depth: Plug Back Depth: Plug Back Method:

Geological Date:

Table with 4 columns: Formation Name, Formation Top, Formation Base, Completion Information. Rows 1 and 2.

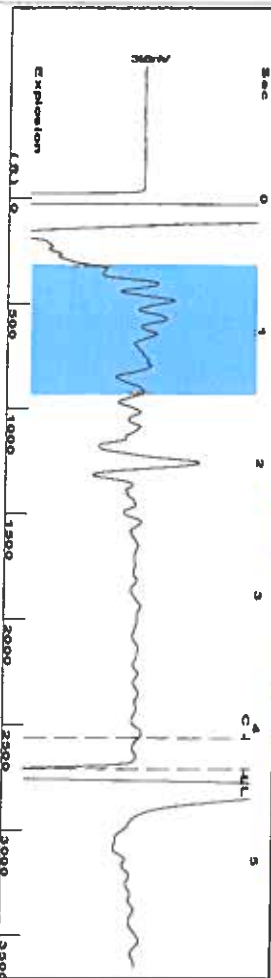
UNDER PENALTY OF PERJURY I HEREBY ATTEST THAT THE INFORMATION CONTAINED HEREIN IS TRUE AND CORRECT TO THE BEST OF MY KNOWLEDGE

Submitted Electronically

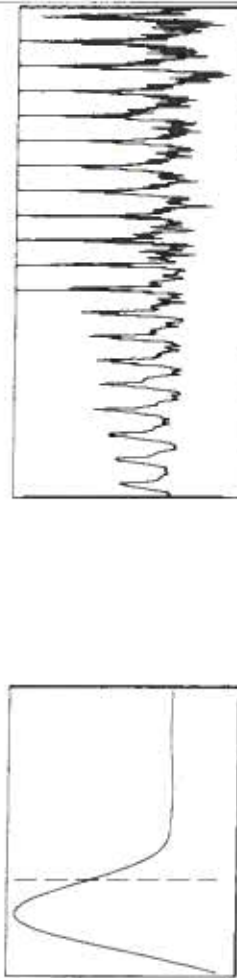
Form with fields: Do NOT Write in This Space - KCC USE ONLY, Date Tested, Results, Date Plugged, Date Repaired, Date Put Back in Service, Review Completed by, Comments, TA Approved: Yes Denied, Date.

Mail to the Appropriate KCC Conservation Office:

Table with 3 columns: District Office #, Address, Phone. Rows 1-4.



Filter Type: High Pass  
 Manual Acoustic Velo: 1248.03 f/s  
 Automatic Collar Count: Yes  
 Manual JTS/sec: 19.685  
 Time Joints: 4.313 sec  
 Depth: 2709.87 ft



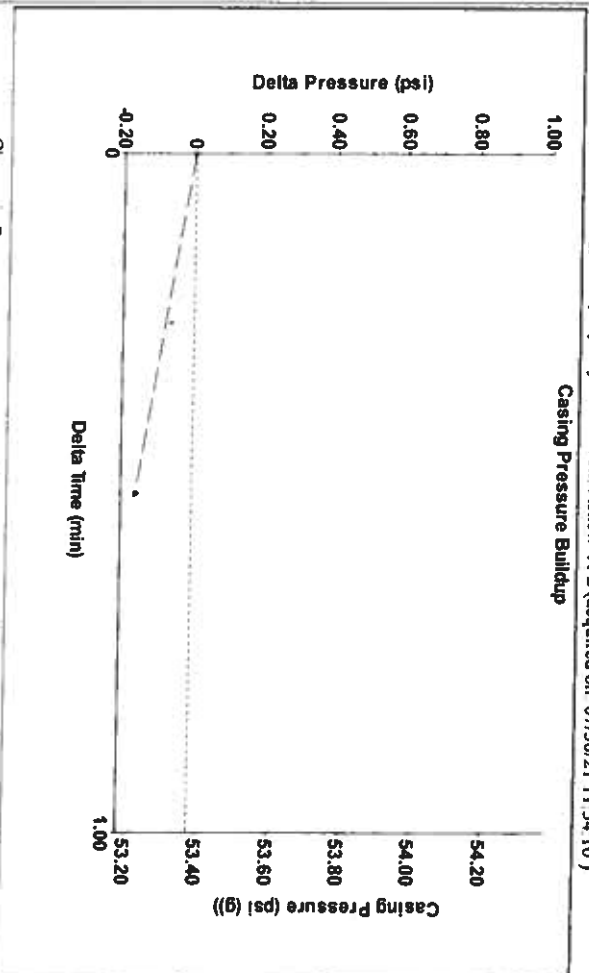
Analysis Method: Automatic

Production	Current	Potential	Casing Pressure	Producing
Oil	Oil	BBL/D	53.4 psi (g)	Annular Gas Flow
Water	Water	BBL/D	-0.159 psi	% Liquid
Gas	Gas	Mscf/D	0.50 min	100 %
IPR Method		Vogel	Gas/Liquid Interface Pressure	
PBHP/SBHP		0.0	58.1 psi (g)	
Production Efficiency			Liquid Level Depth	
			2709.87 ft	
Oil	40 deg API		Pump Intake Depth	
Water	1.05 Sp.Gr.H2O		2965.00 ft	
Gas	0.74 Sp.Gr.AIR		Formation Depth	
			2954.00 ft	
Acoustic Velocity	1256.61 f/s			

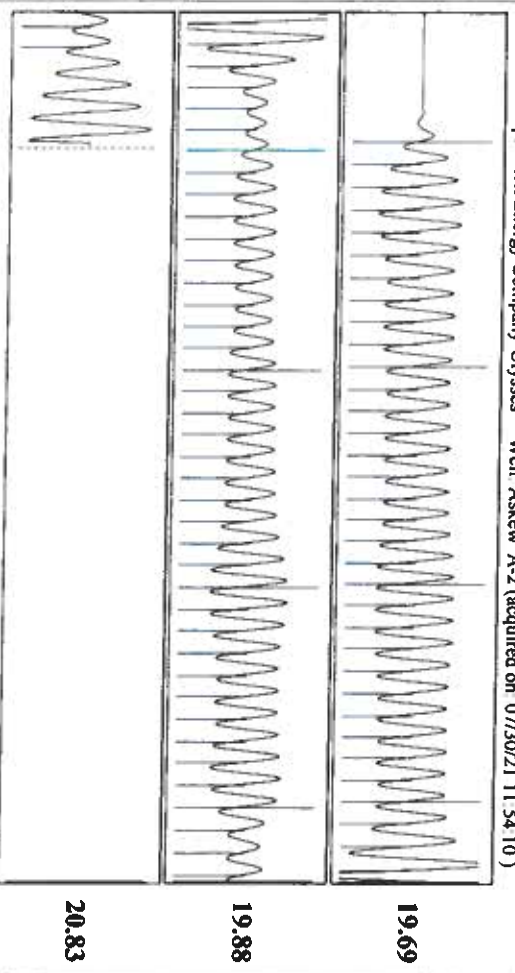
Formation Submergence  
 Total Gaseous Liquid Column HT (TVL)  
 Equivalent Gas Free Liquid HT (TVL)  
 Acoustic Test



Pump Intake: 144.3 psi (g)  
 Producing BHP: 140.6 psi (g)  
 Static BHP: -



Change in Pressure: -0.16 psi  
 Change in Time: 0.50 min  
 PT18868  
 Range: 0.7 psi



Acoustic Velocity: 1256.61 f/s  
 Joints Per Second: 19.8203 Jts/sec  
 Depth to liquid level: 2709.87 ft  
 Automatic Collar Count: Yes

Joints counted: 75  
 Joints to liquid level: 85.4849  
 Filter Width: 17.685  
 Time to 1st Collar: 0.296

August 05, 2021

Katherine McClurkan  
Merit Energy Company, LLC  
13727 Noel Road, Suite 1200  
Dallas, TX 75240-7362

Re: Temporary Abandonment  
API 15-067-20435-00-00  
Askew A 2  
NE/4 Sec.23-27S-35W  
Grant County, Kansas

Dear Katherine McClurkan:

"Your temporary abandonment (TA) application for the well listed above has been approved. In accordance with K.A.R. 82-3-111 the TA status of this well will expire 08/05/2022.

- \* If you return this well to service or plug it, please notify the District Office.
- \* If you sell this well you are required to file a Transfer of Operator form, T-1.
- \* If the well will remain temporarily abandoned, you must submit a new TA application, CP-111, before 08/05/2022.

You may contact me at the number above if you have questions.

Very truly yours,

Michael Maier"