

KANSAS CORPORATION COMMISSION
OIL & GAS CONSERVATION DIVISION

TEMPORARY ABANDONMENT WELL APPLICATION

OPERATOR: License#
Name:
Address 1:
Address 2:
City: State: Zip:
Contact Person:
Phone:
Contact Person Email:
Field Contact Person:
Field Contact Person Phone:

API No. 15-
Spot Description:
Sec. Twp. S. R.
feet from N / S Line of Section
feet from E / W Line of Section
GPS Location: Lat: , Long:
Datum: NAD27 NAD83 WGS84
County: Elevation: GL KB
Lease Name: Well #:
Well Type: (check one) Oil Gas OG WSW Other:
SWD Permit #: ENHR Permit #:
Gas Storage Permit #:
Spud Date: Date Shut-In:

Table with 7 columns: Conductor, Surface, Production, Intermediate, Liner, Tubing. Rows include Size, Setting Depth, Amount of Cement, Top of Cement, Bottom of Cement.

Casing Fluid Level from Surface: How Determined? Date:
Casing Squeeze(s): to w / sacks of cement, to w / sacks of cement. Date:
Do you have a valid Oil & Gas Lease? Yes No
Depth and Type: Junk in Hole at Tools in Hole at Casing Leaks: Yes No Depth of casing leak(s):
Type Completion: ALT. I ALT. II Depth of: DV Tool: w / sacks of cement Port Collar: w / sack of cement
Packer Type: Size: Inch Set at: Feet
Total Depth: Plug Back Depth: Plug Back Method:

Geological Date:

Table with 4 columns: Formation Name, Formation Top, Formation Base, Completion Information. Rows 1 and 2.

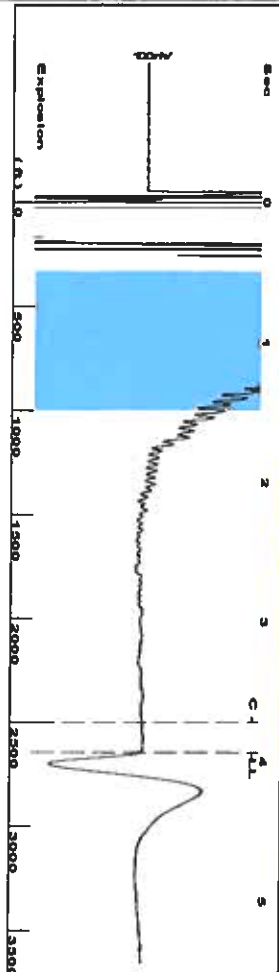
UNDER PENALTY OF PERJURY I HEREBY ATTEST THAT THE INFORMATION CONTAINED HEREIN IS TRUE AND CORRECT TO THE BEST OF MY KNOWLEDGE

Submitted Electronically

Do NOT Write in This Space - KCC USE ONLY
Date Tested: Results: Date Plugged: Date Repaired: Date Put Back in Service:
Review Completed by: Comments:
TA Approved: Yes Denied Date:

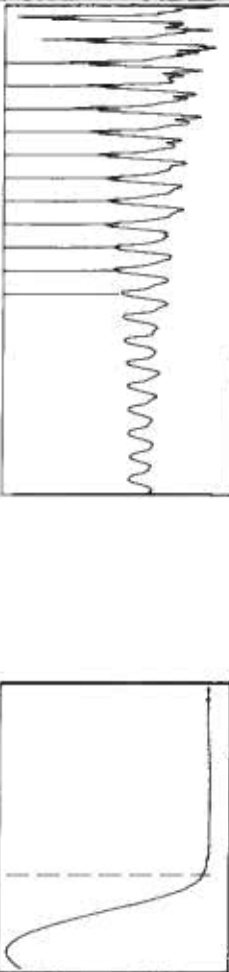
Mail to the Appropriate KCC Conservation Office:

Table with 2 columns: Office Address, Phone. Rows for KCC District Office #1, #2, #3, #4.



Filter Type High Pass Automatic Collar Count Yes
 Manual Acoustic Velo 1340.38 ft/s Manual JTS/sec 21.1416
 Time 3.937 sec
 Joints 83,4498 Jts
 Depth 2645.36 ft

0.5 to 1.5 (Sec) |

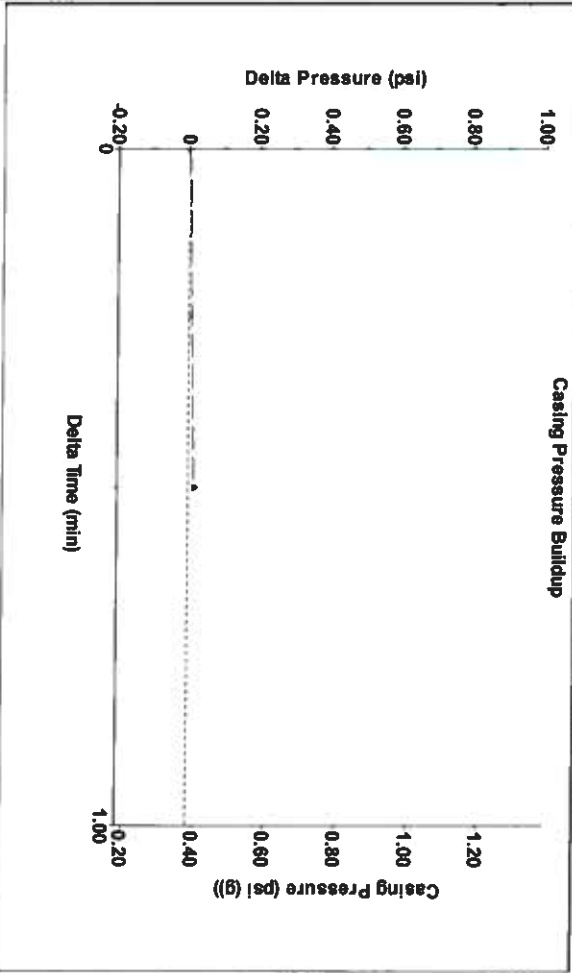
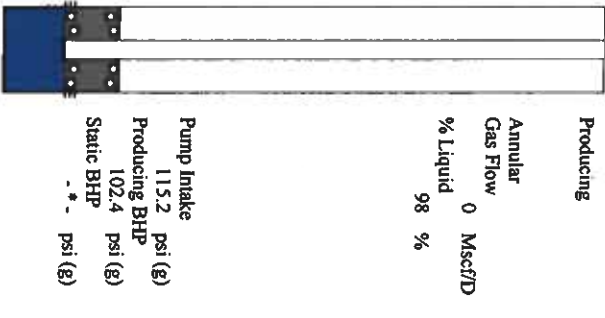


Analysis Method: Automatic

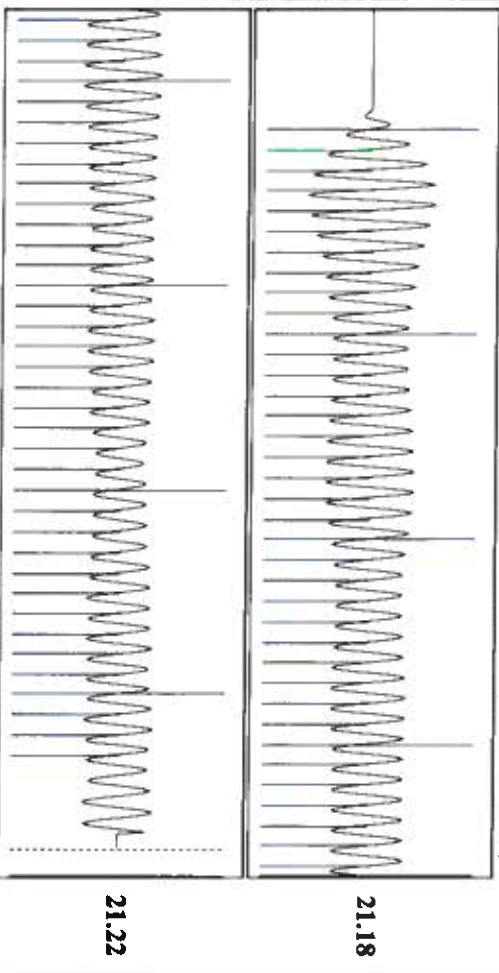
Production Current	Potential	Casing Pressure	Producing
Oil -*- BBL/D	-*- BBL/D	0.4 psi (g)	Annular
Water -*- BBL/D	-*- BBL/D	Casing Pressure Buildup	Gas Flow
Gas -*- Mscf/D	-*- Mscf/D	0.016 psi	0 Mscf/D
IPR Method	Vogel	Gas/Liquid Interface Pressure	% Liquid
PBHP/SBHP	-*-	1.3 psi (g)	98 %
Production Efficiency	0.0	Liquid Level Depth	
Oil 40 deg API		2645.36 ft	
Water 1.05 Sp-Gr-H2O		Pump Intake Depth	
Gas 0.67 Sp-Gr-AIR		2990.00 ft	
Acoustic Velocity	1343.84 ft/s	Formation Depth	
		2952.00 ft	

Formation Submergence 345 ft
 Total Gaseous Liquid Column HT (TVL) 338 ft
 Equivalent Gas Free Liquid HT (TVL)

Acoustic Test
 Tim Frydendall-Fluid Level Technician



Change in Pressure 0.02 psi
 Change in Time 0.50 min
 PT18868
 Range
 0 - 2 psi



Acoustic Velocity 1343.84 ft/s
 Joints Per Second 21.1963 ft/sec
 Depth to liquid level 2645.36 ft
 Automatic Collar Count Yes
 Joints counted 73
 Joints to liquid level 83,4498
 Filter Width 19.1416
 Time to 1st Collar 0.276
 21.22
 21.18

August 05, 2021

Katherine McClurkan
Merit Energy Company, LLC
13727 Noel Road, Suite 1200
Dallas, TX 75240-7362

Re: Temporary Abandonment
API 15-067-20416-00-00
Ladner A 2
NE/4 Sec.28-27S-35W
Grant County, Kansas

Dear Katherine McClurkan:

"Your temporary abandonment (TA) application for the well listed above has been approved. In accordance with K.A.R. 82-3-111 the TA status of this well will expire 08/05/2022.

- * If you return this well to service or plug it, please notify the District Office.
- * If you sell this well you are required to file a Transfer of Operator form, T-1.
- * If the well will remain temporarily abandoned, you must submit a new TA application, CP-111, before 08/05/2022.

You may contact me at the number above if you have questions.

Very truly yours,

Michael Maier"