

KANSAS CORPORATION COMMISSION
OIL & GAS CONSERVATION DIVISION

TEMPORARY ABANDONMENT WELL APPLICATION

OPERATOR: License#
Name:
Address 1:
Address 2:
City: State: Zip:
Contact Person:
Phone:
Contact Person Email:
Field Contact Person:
Field Contact Person Phone:

API No. 15-
Spot Description:
Sec. Twp. S. R.
feet from N / S Line of Section
feet from E / W Line of Section
GPS Location: Lat: , Long:
Datum: NAD27 NAD83 WGS84
County: Elevation: GL KB
Lease Name: Well #:
Well Type: (check one) Oil Gas OG WSW Other:
SWD Permit #: ENHR Permit #:
Gas Storage Permit #:
Spud Date: Date Shut-In:

Table with 7 columns: Conductor, Surface, Production, Intermediate, Liner, Tubing. Rows include Size, Setting Depth, Amount of Cement, Top of Cement, Bottom of Cement.

Casing Fluid Level from Surface: How Determined? Date:
Casing Squeeze(s): to w / sacks of cement, to w / sacks of cement. Date:
Do you have a valid Oil & Gas Lease? Yes No
Depth and Type: Junk in Hole at Tools in Hole at Casing Leaks: Yes No Depth of casing leak(s):
Type Completion: ALT. I ALT. II Depth of: DV Tool: w / sacks of cement Port Collar: w / sack of cement
Packer Type: Size: Inch Set at: Feet
Total Depth: Plug Back Depth: Plug Back Method:

Geological Data:

Table with 4 columns: Formation Name, Formation Top, Formation Base, Completion Information. Rows 1 and 2.

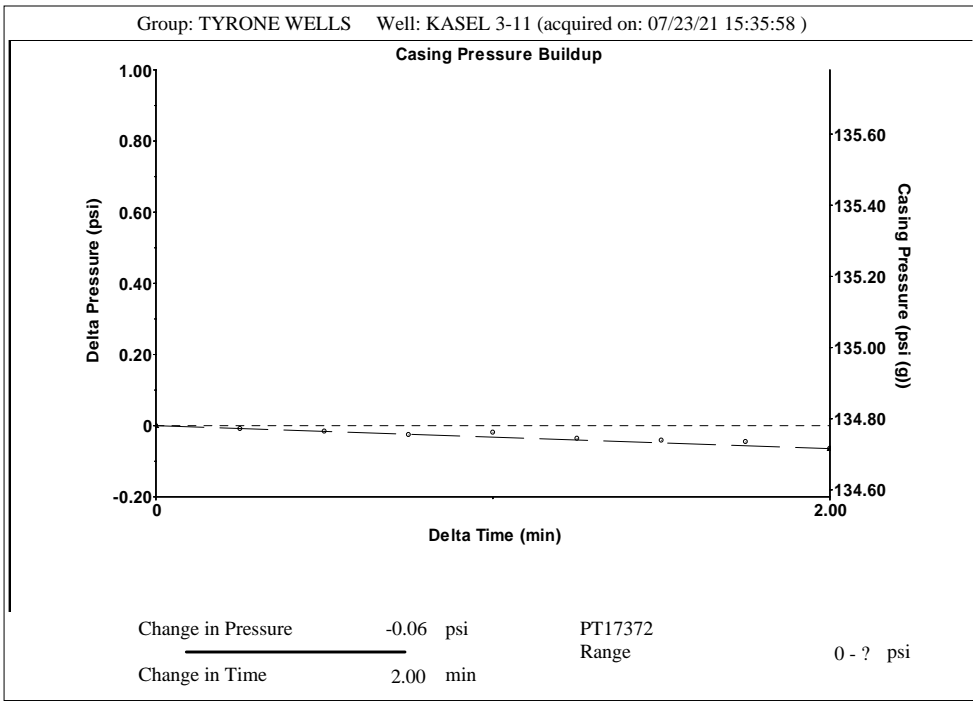
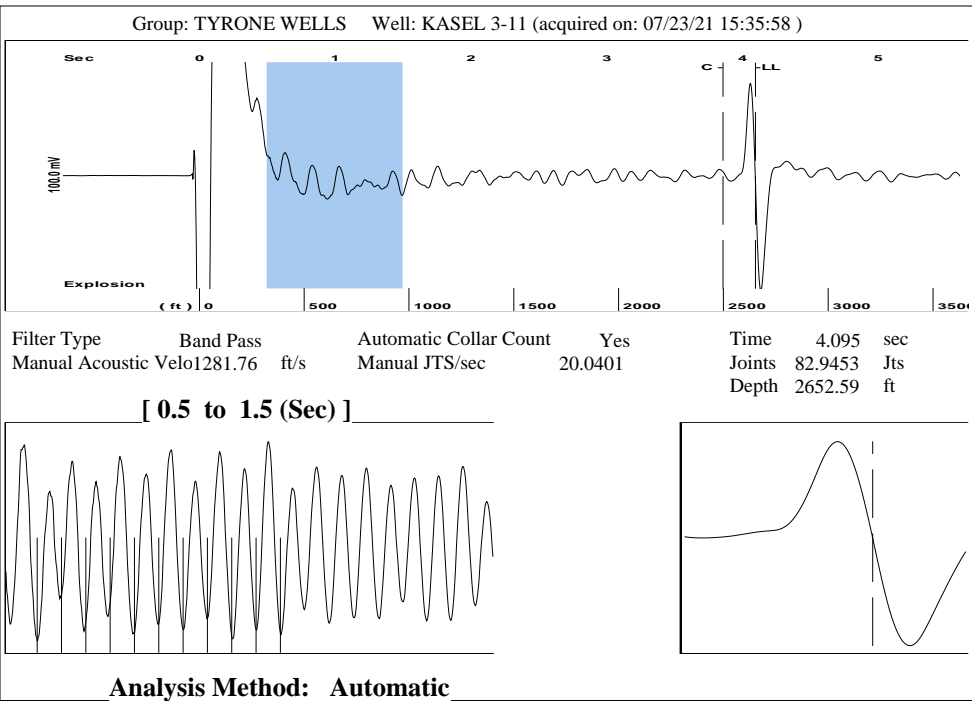
UNDER PENALTY OF PERJURY I HEREBY ATTEST THAT THE INFORMATION CONTAINED HEREIN IS TRUE AND CORRECT TO THE BEST OF MY KNOWLEDGE

Submitted Electronically

Do NOT Write in This Space - KCC USE ONLY
Date Tested: Results: Date Plugged: Date Repaired: Date Put Back in Service:
Review Completed by: Comments:
TA Approved: Yes Denied Date:

Mail to the Appropriate KCC Conservation Office:

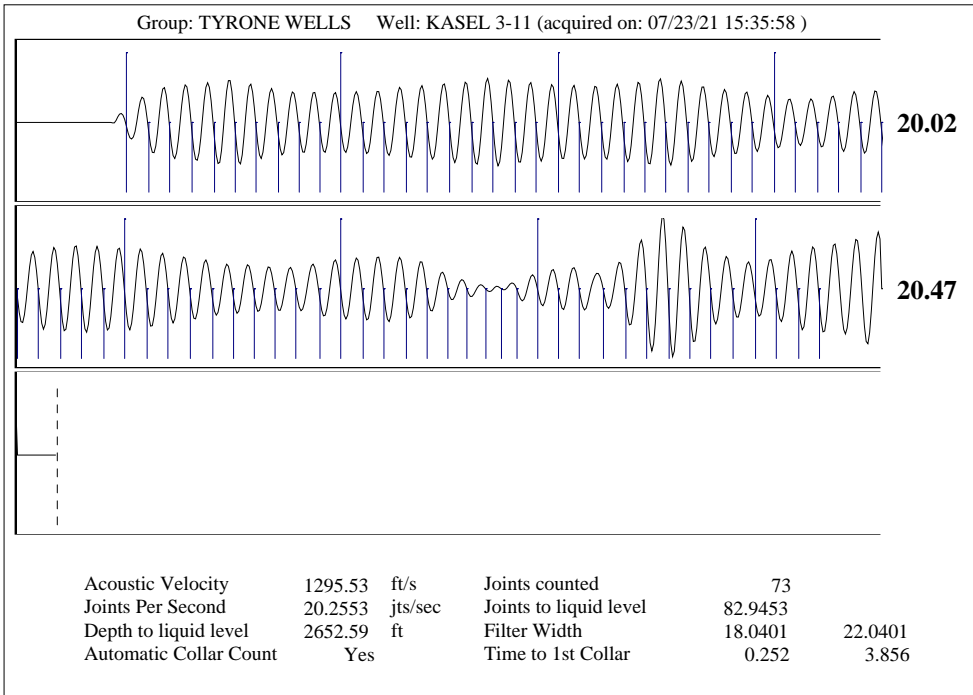
Table with 3 columns: District Office #, Address, Phone. Rows 1-4.



Group: TYRONE WELLS Well: KASEL 3-11 (acquired on: 07/23/21 15:35:58)

Production		Potential		Casing Pressure		Static	
Oil	- * -	- * -	BBL/D	134.8	psi (g)	Oil Column Height	MD 0 ft
Water	- * -	- * -	BBL/D	Casing Pressure Buildup	2.00	min	
Gas	- * -	- * -	Mscf/D	Gas/Liquid Interface Pressure	144.6	psi (g)	
IPR Method		Vogel		Liquid Level Depth		Water Column Height	
PBHP/SBHP	- * -	- * -		2652.59	ft	MD	- * - ft
Production Efficiency	0.0			Pump Intake Depth		Static BHP	
Oil	40 deg.API			2709.00	ft	144.2	psi (g)
Water	1.05 Sp.Gr.H2O			Formation Depth			
Gas	0.70 Sp.Gr.AIR			2594.00	ft		
Acoustic Velocity		1295.53 ft/s					

Acoustic Test



August 05, 2021

Liv Adams
XTO Energy Inc.
210 PARK AVE STE 2350
OKLAHOMA CITY, OK 73102-5683

Re: Temporary Abandonment
API 15-175-21379-00-00
KASEL 3-11
NW/4 Sec.11-31S-33W
Seward County, Kansas

Dear Liv Adams:

"Your temporary abandonment (TA) application for the well listed above has been approved. In accordance with K.A.R. 82-3-111 the TA status of this well will expire 08/05/2022.

- * If you return this well to service or plug it, please notify the District Office.
- * If you sell this well you are required to file a Transfer of Operator form, T-1.
- * If the well will remain temporarily abandoned, you must submit a new TA application, CP-111, before 08/05/2022.

You may contact me at the number above if you have questions.

Very truly yours,

Michael Maier"