

KANSAS CORPORATION COMMISSION
OIL & GAS CONSERVATION DIVISION

TEMPORARY ABANDONMENT WELL APPLICATION

OPERATOR: License#
Name:
Address 1:
Address 2:
City: State: Zip:
Contact Person:
Phone:
Contact Person Email:
Field Contact Person:
Field Contact Person Phone:

API No. 15-
Spot Description:
Sec. Twp. S. R.
GPS Location: Lat, Long
Datum: NAD27, NAD83, WGS84
County: Elevation:
Lease Name: Well #:
Well Type: Oil, Gas, OG, WSW, Other
SWD Permit #: ENHR Permit #:
Gas Storage Permit #:
Spud Date: Date Shut-In:

Table with 7 columns: Conductor, Surface, Production, Intermediate, Liner, Tubing. Rows include Size, Setting Depth, Amount of Cement, Top of Cement, Bottom of Cement.

Casing Fluid Level from Surface: How Determined? Date:
Casing Squeeze(s): to w / sacks of cement, to w / sacks of cement. Date:
Do you have a valid Oil & Gas Lease? Yes No
Depth and Type: Junk in Hole at Tools in Hole at Casing Leaks: Yes No Depth of casing leak(s):
Type Completion: ALT. I ALT. II Depth of: DV Tool: w / sacks of cement Port Collar: w / sack of cement
Packer Type: Size: Inch Set at: Feet
Total Depth: Plug Back Depth: Plug Back Method:

Geological Data:

Table with 4 columns: Formation Name, Formation Top, Formation Base, Completion Information. Rows 1 and 2.

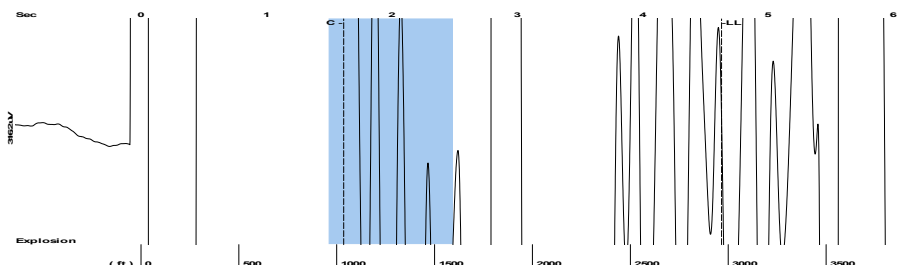
UNDER PENALTY OF PERJURY I HEREBY ATTEST THAT THE INFORMATION CONTAINED HEREIN IS TRUE AND CORRECT TO THE BEST OF MY KNOWLEDGE

Submitted Electronically

Do NOT Write in This Space - KCC USE ONLY
Date Tested: Results: Date Plugged: Date Repaired: Date Put Back in Service:
Review Completed by: Comments:
TA Approved: Yes Denied Date:

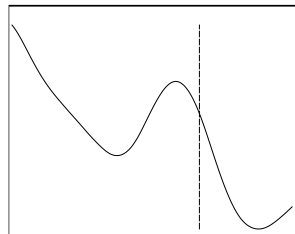
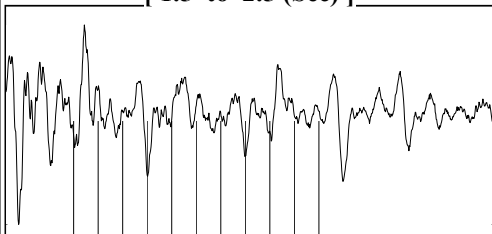
Mail to the Appropriate KCC Conservation Office:

Table with 3 columns: District Office #, Address, Phone. Includes map of Kansas with numbered districts 1-4.



Filter Type High Pass Automatic Collar Count Yes Time 4.629 sec  
 Manual Acoustic Veloc 1257.94 ft/s Manual JTS/sec 19.8413 Joints 93.5501 Jts  
 Depth 2965.54 ft

[ 1.5 to 2.5 (Sec) ]



**Analysis Method: Automatic**

NO PRESSURE DATA AVAILABLE

Change in Pressure 0.00 psi PT18514  
 Range 0 - ? psi  
 Change in Time 0.00 min

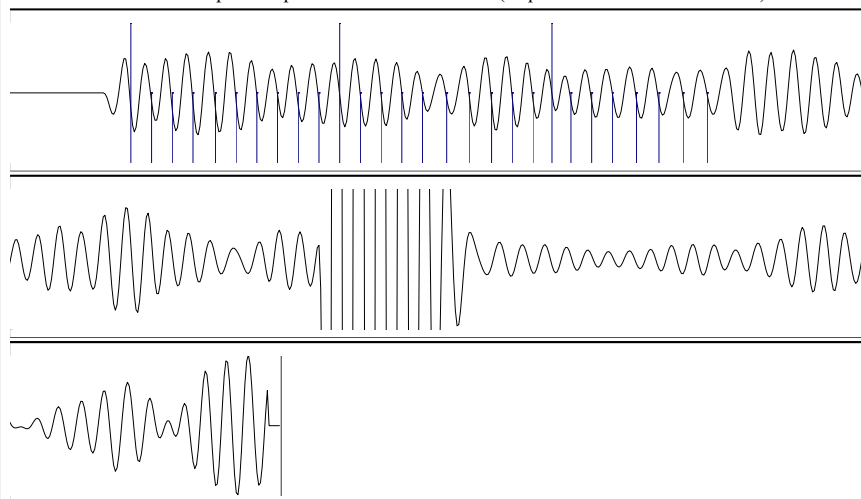
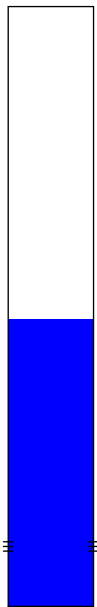
Production Current Potential Casing Pressure -0.0 psi (g)  
 Oil - \* - BBL/D Casing Pressure Buildup - \* - psi  
 Water - \* - BBL/D - \* - min  
 Gas - \* - Mscf/D Gas/Liquid Interface Pressure - \* - psi (g)

IPR Method Vogel  
 PBHP/SBHP - \* -  
 Production Efficiency 0.0

Oil 40 deg.API Liquid Level Depth 2965.54 ft  
 Water 1.05 Sp.Gr.H2O  
 Gas 0.71 Sp.Gr.AIR Pump Intake Depth - \* - ft

Acoustic Velocity 1281.29 ft/s Formation Depth 5640.00 ft

Static  
 Oil Column Height MD 0 ft  
 Water Column Height MD - \* - ft  
 Static BHP - \* - psi (g)



20.21

Acoustic Velocity 1281.29 ft/s Joints counted 27  
 Joints Per Second 20.2096 jts/sec Joints to liquid level 93.5501  
 Depth to liquid level 2965.54 ft Filter Width 17.8413 21.8413  
 Automatic Collar Count Yes Time to 1st Collar 0.28 1.616

August 05, 2021

Jose Reyes  
American Warrior, Inc.  
PO BOX 399  
GARDEN CITY, KS 67846-0399

Re: Temporary Abandonment  
API 15-189-21790-00-00  
DAVIS A 1  
NE/4 Sec.12-32S-35W  
Stevens County, Kansas

Dear Jose Reyes:

"Your temporary abandonment (TA) application for the well listed above has been approved. In accordance with K.A.R. 82-3-111 the TA status of this well will expire 08/05/2022.

- \* If you return this well to service or plug it, please notify the District Office.
- \* If you sell this well you are required to file a Transfer of Operator form, T-1.
- \* If the well will remain temporarily abandoned, you must submit a new TA application, CP-111, before 08/05/2022.

You may contact me at the number above if you have questions.

Very truly yours,

Michael Maier"