

KANSAS CORPORATION COMMISSION
OIL & GAS CONSERVATION DIVISION

Form must be Typed
Form must be signed

TEMPORARY ABANDONMENT WELL APPLICATION

All blanks must be complete

OPERATOR: License#
Name:
Address 1:
Address 2:
City: State: Zip:
Contact Person:
Phone:
Contact Person Email:
Field Contact Person:
Field Contact Person Phone:

API No. 15-
Spot Description:
Sec. Twp. S. R.
feet from N / S Line of Section
feet from E / W Line of Section
GPS Location: Lat: , Long:
Datum: NAD27 NAD83 WGS84
County: Elevation: GL KB
Lease Name: Well #:
Well Type: Oil Gas OG WSW Other:
SWD Permit #: ENHR Permit #:
Gas Storage Permit #:
Spud Date: Date Shut-In:

Table with 7 columns: Conductor, Surface, Production, Intermediate, Liner, Tubing. Rows include Size, Setting Depth, Amount of Cement, Top of Cement, Bottom of Cement.

Casing Fluid Level from Surface: How Determined? Date:
Casing Squeeze(s): to w / sacks of cement, to w / sacks of cement. Date:
Do you have a valid Oil & Gas Lease? Yes No
Depth and Type: Junk in Hole at Tools in Hole at Casing Leaks: Yes No Depth of casing leak(s):
Type Completion: ALT. I ALT. II Depth of: DV Tool: w / sacks of cement Port Collar: w / sack of cement
Packer Type: Size: Inch Set at: Feet
Total Depth: Plug Back Depth: Plug Back Method:

Geological Data:

Table with 4 columns: Formation Name, Formation Top, Formation Base, Completion Information. Rows 1 and 2.

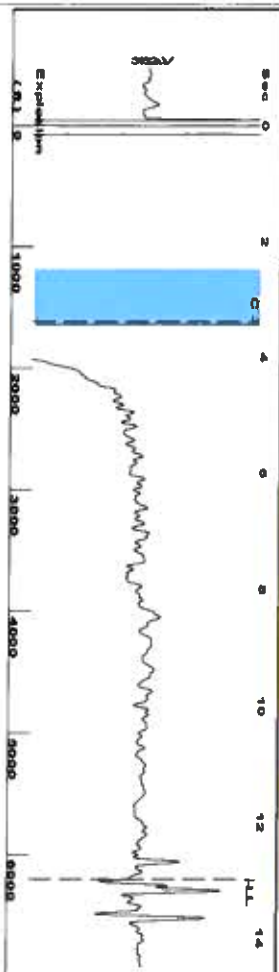
UNDER PENALTY OF PERJURY I HEREBY ATTEST THAT THE INFORMATION CONTAINED HEREIN IS TRUE AND CORRECT TO THE BEST OF MY KNOWLEDGE

Submitted Electronically

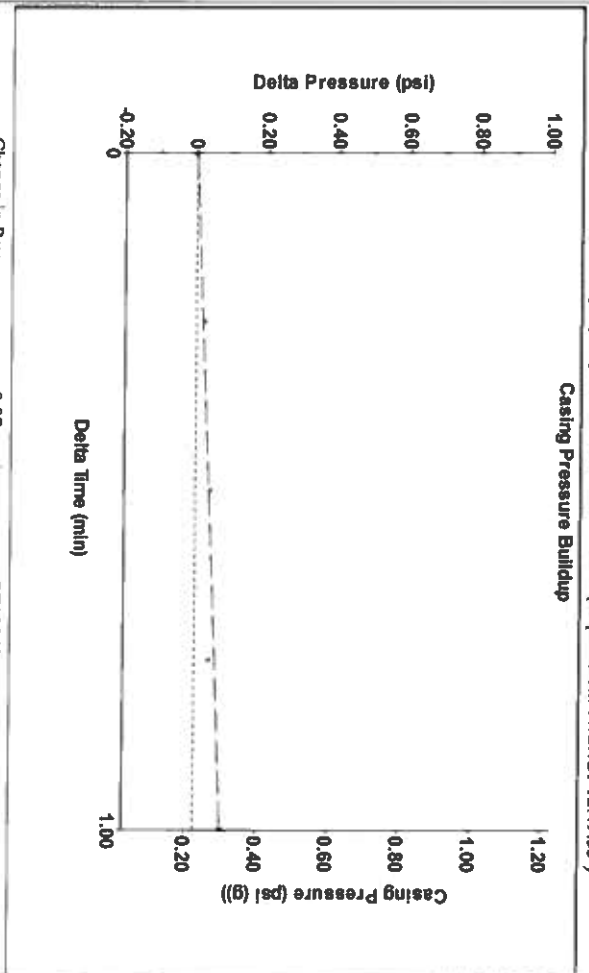
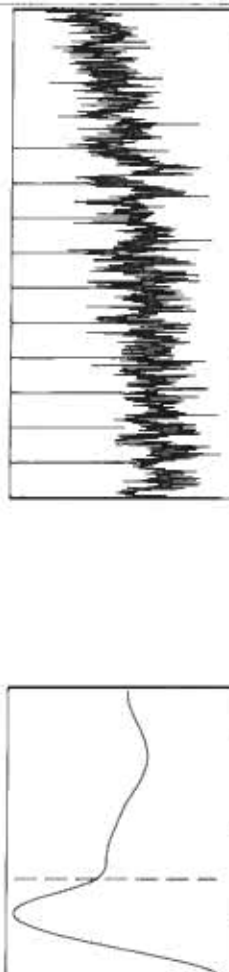
Do NOT Write in This Space - KCC USE ONLY
Date Tested: Results: Date Plugged: Date Repaired: Date Put Back in Service:
Review Completed by: Comments:
TA Approved: Yes Denied Date:

Mail to the Appropriate KCC Conservation Office:

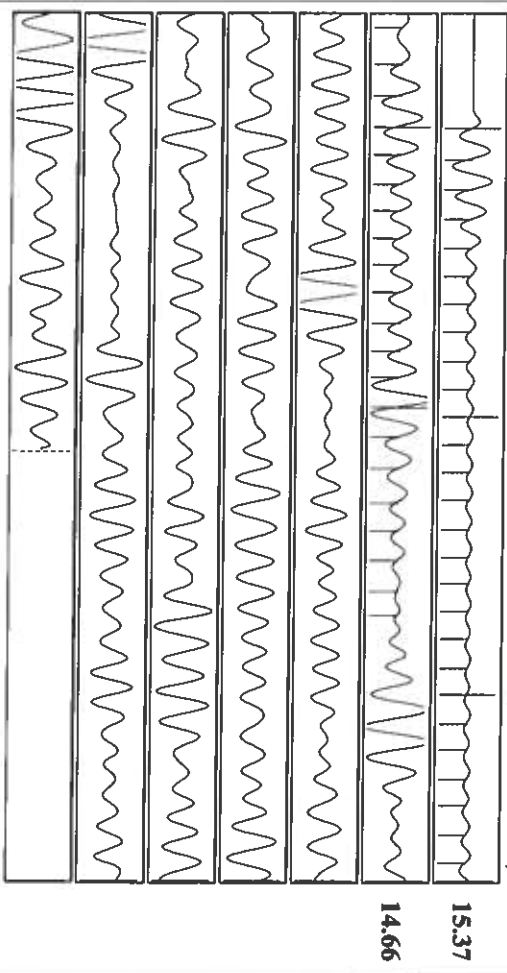
Table with 3 columns: District Office #, Address, Phone. Rows 1-4.



Filter Type: High Pass  
 Manual Acoustic Velocity: 86.713 ft/s  
 Automatic Collar Count: Yes  
 Manual JTS/sec: 13.986  
 Time: 13.009 sec  
 Joints: 195.718 Jts  
 Depth: 6204.26 ft



Change in Pressure: 0.07 psi  
 Change in Time: 1.00 min  
 PT18868 Range  
 0 - 7 psi



Acoustic Velocity: 953.841 ft/s  
 Joints Per Second: 15.0448 Jts/sec  
 Depth to Liquid Level: 6204.26 ft  
 Automatic Collar Count: Yes

Joints counted: 47  
 Joints to liquid level: 195.718  
 Filter Width: 11.986  
 Time to 1st Collar: 0.264

Analysis Method: Automatic

Current	Potential	Casting Pressure	Producing
Oil: -*	BB/L/D: -*	0.2 psi (g)	Annular Gas Flow: 4 Mscf/D
Water: -*	BB/L/D: -*	Casing Pressure Buildup: 0.075 psi	% Liquid: 100 %
Gas: -*	Mscf/D: -*	1.00 min	
IPR Method: PBHP/SBHP	Vogel: -*	Gas/Liquid Interface Pressure: 3.7 psi (g)	
Production Efficiency: 0.0			
		<b>Liquid Level Depth: 6204.26 ft</b>	
Oil: 40 deg API		Pump Intake Depth: 5733.00 ft	Pump Intake: 3.5 psi (g)
Water: 1.05 Sp.Gr./H2O		Formation Depth: 5733.00 ft	Producing BHP: 3.5 psi (g)
Gas: 1.03 Sp.Gr./AIR			Static BHP: -* psi (g)
Acoustic Velocity: 953.841 ft/s			

Formation Submergence: -\* ft  
 Total Gaseous Liquid Column HT (TVD): -\* ft  
 Equivalent Gas Free Liquid HT (TVF): -\* ft

Acoustic Test: Tim Fydedall-Fluid Level Technician

August 12, 2021

Katherine McClurkan  
Merit Energy Company, LLC  
13727 Noel Road, Suite 1200  
Dallas, TX 75240-7362

Re: Temporary Abandonment  
API 15-187-21093-00-00  
Williams 2-L21-29-39  
SW/4 Sec.21-29S-39W  
Stanton County, Kansas

Dear Katherine McClurkan:

"Your temporary abandonment (TA) application for the well listed above has been approved. In accordance with K.A.R. 82-3-111 the TA status of this well will expire 08/12/2022.

- \* If you return this well to service or plug it, please notify the District Office.
- \* If you sell this well you are required to file a Transfer of Operator form, T-1.
- \* If the well will remain temporarily abandoned, you must submit a new TA application, CP-111, before 08/12/2022.

You may contact me at the number above if you have questions.

Very truly yours,

Michael Maier"