

KANSAS CORPORATION COMMISSION
OIL & GAS CONSERVATION DIVISION

TEMPORARY ABANDONMENT WELL APPLICATION

OPERATOR: License#
Name:
Address 1:
Address 2:
City: State: Zip:
Contact Person:
Phone:
Contact Person Email:
Field Contact Person:
Field Contact Person Phone:

API No. 15-
Spot Description:
Sec. Twp. S. R.
feet from N / S Line of Section
feet from E / W Line of Section
GPS Location: Lat: , Long:
Datum: NAD27 NAD83 WGS84
County: Elevation: GL KB
Lease Name: Well #:
Well Type: (check one) Oil Gas OG WSW Other:
SWD Permit #: ENHR Permit #:
Gas Storage Permit #:
Spud Date: Date Shut-In:

Table with 7 columns: Conductor, Surface, Production, Intermediate, Liner, Tubing. Rows include Size, Setting Depth, Amount of Cement, Top of Cement, Bottom of Cement.

Casing Fluid Level from Surface: How Determined? Date:
Casing Squeeze(s): to w / sacks of cement, to w / sacks of cement. Date:
Do you have a valid Oil & Gas Lease? Yes No
Depth and Type: Junk in Hole at Tools in Hole at Casing Leaks: Yes No Depth of casing leak(s):
Type Completion: ALT. I ALT. II Depth of: DV Tool: w / sacks of cement Port Collar: w / sack of cement
Packer Type: Size: Inch Set at: Feet
Total Depth: Plug Back Depth: Plug Back Method:

Geological Data:

Table with 4 columns: Formation Name, Formation Top, Formation Base, Completion Information. Rows 1 and 2.

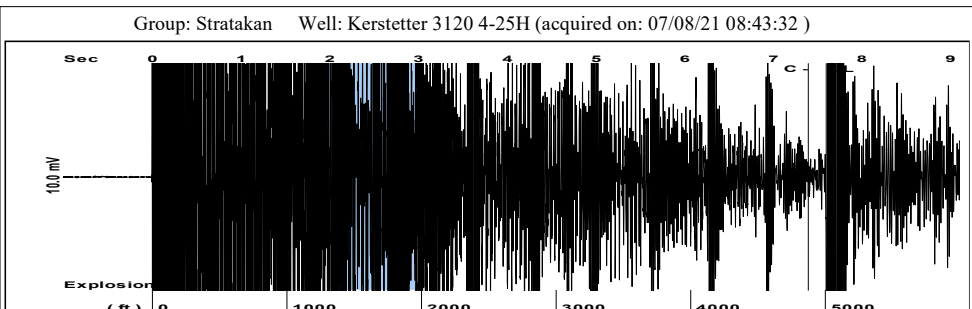
UNDER PENALTY OF PERJURY I HEREBY ATTEST THAT THE INFORMATION CONTAINED HEREIN IS TRUE AND CORRECT TO THE BEST OF MY KNOWLEDGE

Submitted Electronically

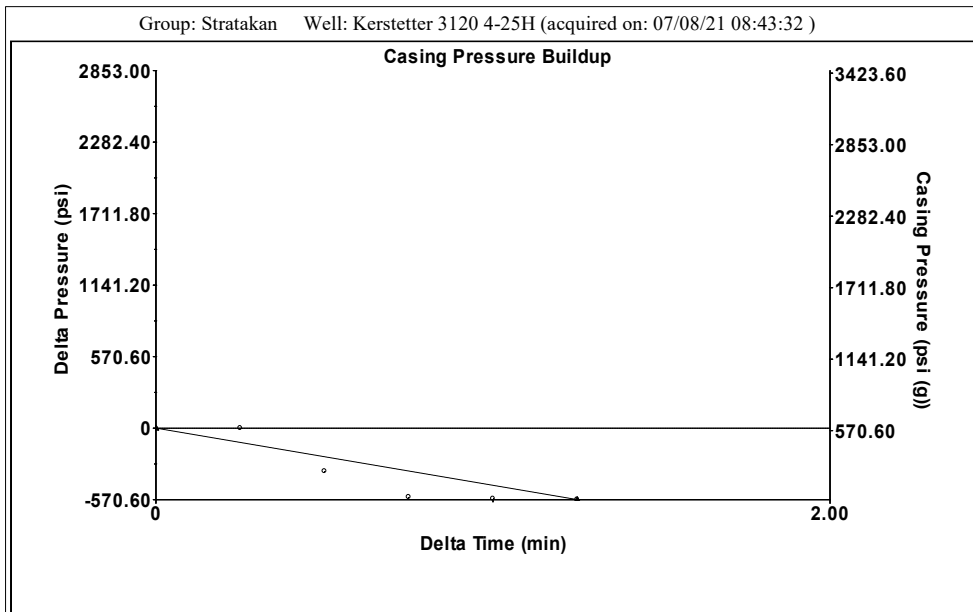
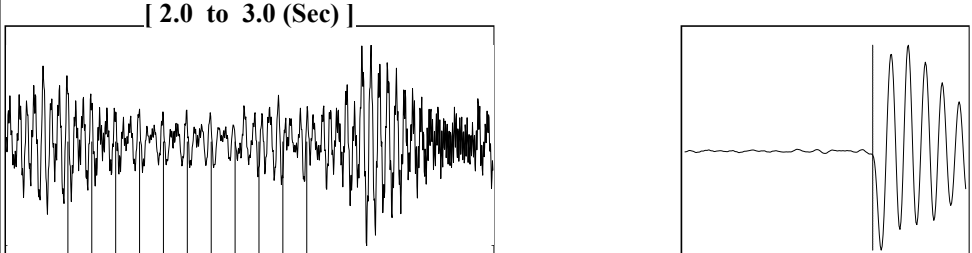
Do NOT Write in This Space - KCC USE ONLY
Date Tested: Results: Date Plugged: Date Repaired: Date Put Back in Service:
Review Completed by: Comments:
TA Approved: Yes Denied Date:

Mail to the Appropriate KCC Conservation Office:

Table with 3 columns: District Office, Address, Phone. Rows for District Office #1, #2, #3, #4.



Filter Type High Pass Automatic Collar Count Yes Time 7.598 sec
 Manual Acoustic Velo 1293.88 ft/s Manual JTS/sec 20.4082 Joints 157.921 Jts
 Depth 5006.09 ft

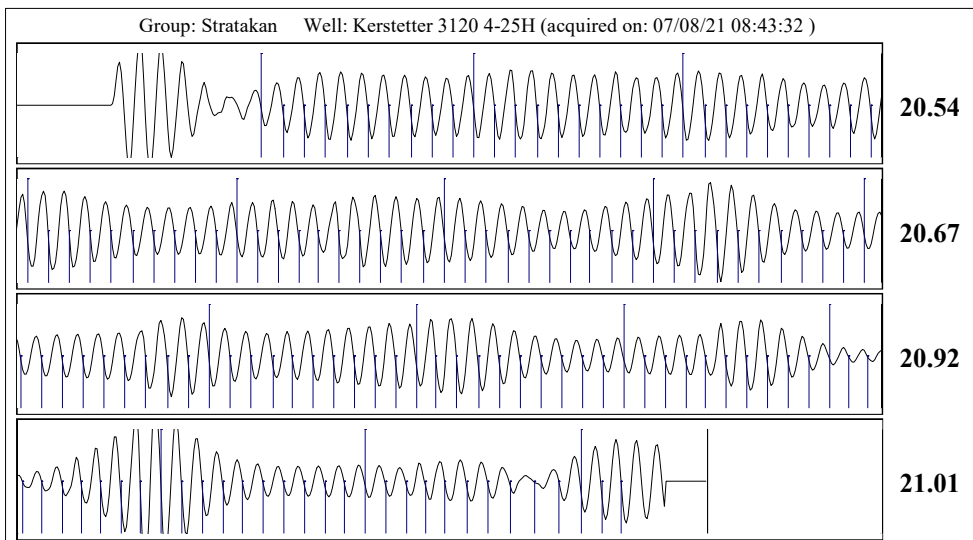


Change in Pressure -570.56 psi PT 14970
 Change in Time 1.25 min Range 0 - ? psi

Group: Stratakan Well: Kerstetter 3120 4-25H (acquired on: 07/08/21 08:43:32)

Production	Potential	Casing Pressure	
Current	- * - BBL/D	590.8 psi (g)	
Oil - * -	- * - BBL/D	Casing Pressure Buildup	
Water - * -	- * - Mscf/D	-570.559 psi	
Gas - * -		1.25 min	Oil Column Height MD 0 ft
IPR Method	Vogel	Gas/Liquid Interface Pressure	Water Column Height MD 4538 ft
PBHP/SBHP	- * -	666.5 psi (g)	
Production Efficiency	0.0	Liquid Level Depth	
		5006.09 ft	
Oil 40 deg.API		Pump Intake Depth	
Water 1.05 Sp.Gr.H2O		5179.00 ft	
Gas 0.63 Sp.Gr.AIR		Formation Depth	
		9544.00 ft	
Acoustic Velocity 1317.74 ft/s			

Acoustic Test



Acoustic Velocity	1317.74 ft/s	Joints counted	142
Joints Per Second	20.7845 jts/sec	Joints to liquid level	157.921
Depth to liquid level	5006.09 ft	Filter Width	18.4082
Automatic Collar Count	Yes	Time to 1st Collar	0.564 7.396

Conservation Division
District Office No. 1
210 E. Frontview, Suite A
Dodge City, KS 67801



Phone: 620-682-7933
<http://kcc.ks.gov/>

Andrew J. French, Chairperson
Dwight D. Keen, Commissioner
Susan K. Duffy, Commissioner

Laura Kelly, Governor

August 12, 2021

Justin Prater
StrataKan Exploration, LLC
100 S MAIN ST
PLAINVILLE, KS 67663-2234

Re: Temporary Abandonment
API 15-033-21704-01-00
KERSTETTER 3120 4-25H
SE/4 Sec.25-31S-20W
Comanche County, Kansas

Dear Justin Prater:

"Your temporary abandonment (TA) application for the well listed above has been approved. In accordance with K.A.R. 82-3-111 the TA status of this well will expire 08/12/2022.

- * If you return this well to service or plug it, please notify the District Office.
- * If you sell this well you are required to file a Transfer of Operator form, T-1.
- * If the well will remain temporarily abandoned, you must submit a new TA application, CP-111, before 08/12/2022.

You may contact me at the number above if you have questions.

Very truly yours,

Michael Maier"