

KANSAS CORPORATION COMMISSION
OIL & GAS CONSERVATION DIVISION

TEMPORARY ABANDONMENT WELL APPLICATION

OPERATOR: License#
Name:
Address 1:
Address 2:
City: State: Zip:
Contact Person:
Phone:
Contact Person Email:
Field Contact Person:
Field Contact Person Phone:

API No. 15-
Spot Description:
Sec. Twp. S. R.
GPS Location: Lat: Long:
Datum: NAD27 NAD83 WGS84
County: Elevation:
Lease Name: Well #:
Well Type: Oil Gas OG WSW Other:
SWD Permit #: ENHR Permit #:
Gas Storage Permit #:
Spud Date: Date Shut-In:

Table with 7 columns: Conductor, Surface, Production, Intermediate, Liner, Tubing. Rows include Size, Setting Depth, Amount of Cement, Top of Cement, Bottom of Cement.

Casing Fluid Level from Surface: How Determined? Date:
Casing Squeeze(s): to w / sacks of cement, to w / sacks of cement. Date:
Do you have a valid Oil & Gas Lease? Yes No
Depth and Type: Junk in Hole at Tools in Hole at Casing Leaks: Yes No Depth of casing leak(s):
Type Completion: ALT. I ALT. II Depth of: DV Tool: w / sacks of cement Port Collar: w / sack of cement
Packer Type: Size: Inch Set at: Feet
Total Depth: Plug Back Depth: Plug Back Method:

Geological Data:

Table with 4 columns: Formation Name, Formation Top, Formation Base, Completion Information. Rows 1 and 2.

UNDER PENALTY OF PERJURY I HEREBY ATTEST THAT THE INFORMATION CONTAINED HEREIN IS TRUE AND CORRECT TO THE BEST OF MY KNOWLEDGE

Submitted Electronically

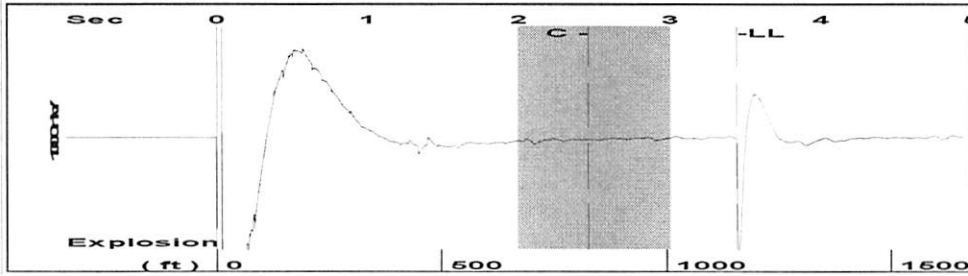
Do NOT Write in This Space - KCC USE ONLY
Date Tested: Results: Date Plugged: Date Repaired: Date Put Back in Service:
Review Completed by: Comments:
TA Approved: Yes Denied Date:

Mail to the Appropriate KCC Conservation Office:

Table with 3 columns: District Office #, Address, Phone. Rows 1-4.

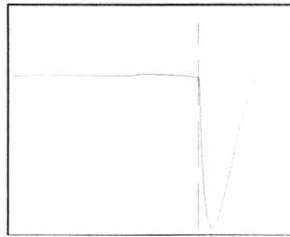
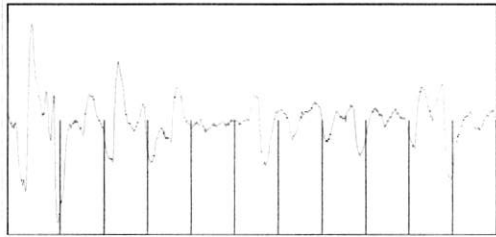


Group: 3G Production, LLC Well: Luders 8 (acquired on: 08/16/21 16:09:03)



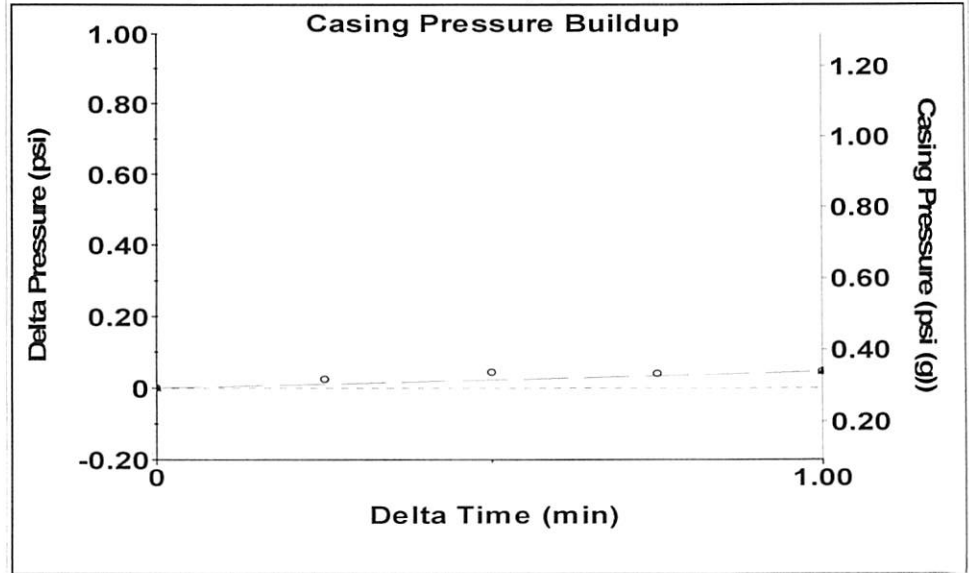
Filter Type High Pass Automatic Collar Count Yes Time 3.439 sec
 Manual Acoustic Velo 709.172 ft/s Manual JTS/sec 11.1857 Joints 36.4301 Jts
 Depth 1154.83 ft

[2.0 to 3.0 (Sec)]



Analysis Method: Automatic

Group: 3G Production, LLC Well: Luders 8 (acquired on: 08/16/21 16:09:03)



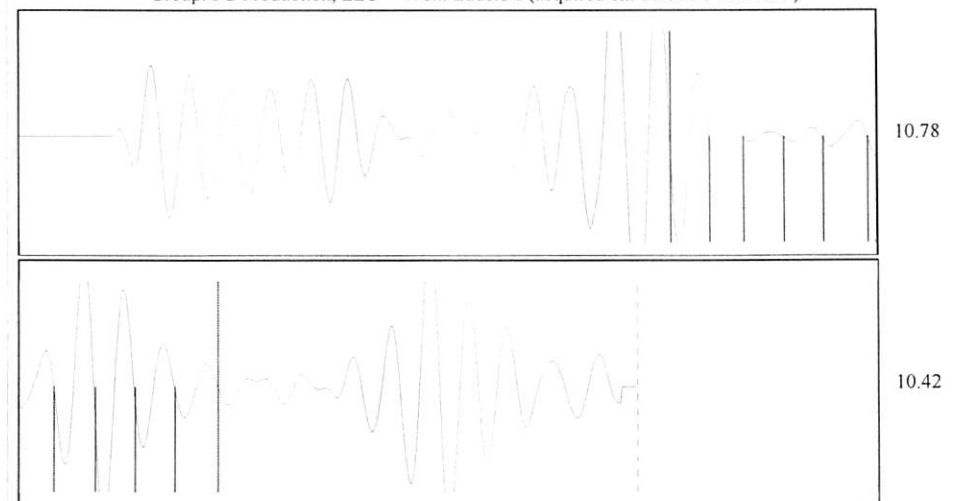
Change in Pressure 0.05 psi PT15469
 Change in Time 1.00 min Range 0 - ? psi

Group: 3G Production, LLC Well: Luders 8 (acquired on: 08/16/21 16:09:03)

Production	Potential	Casing Pressure	Producing
Oil - * -	- * - BBL/D	0.3 psi (g)	
Water - * -	- * - BBL/D	Casing Pressure Buildup	
Gas - * -	- * - Mscf/D	0.0 psi	
		1.00 min	
IPR Method	Vogel	Gas/Liquid Interface Pressure	Casing % Liquid
PBHP/SBHP	- * -	1.1 psi (g)	100 %
Production Efficiency	0.0		
		Liquid Level Depth	
Oil 40 deg.API		1154.83 ft	
Water 1.05 Sp.Gr.H2O			
Gas 1.28 Sp.Gr.AIR		Tubing Intake Depth	
		4200.00 ft	
Acoustic Velocity	671.61 ft/s	Formation Depth	
		4200.00 ft	
		Tubing Intake	
		1385.6 psi (g)	
Formation Submergence		Producing BHP	
Total Gaseous Liquid Column HT (TVD)	3045 ft	1385.6 psi (g)	
Equivalent Gas Free Liquid HT (TVD)	3045 ft	Static BHP	
		- * - psi (g)	
Acoustic Test			



Group: 3G Production, LLC Well: Luders 8 (acquired on: 08/16/21 16:09:03)



Acoustic Velocity 671.61 ft/s Joints counted 10
 Joints Per Second 10.5932 jts/sec Joints to liquid level 36.4301
 Depth to liquid level 1154.83 ft Filter Width 9.18568 13.1857
 Automatic Collar Count Yes Time to 1st Collar 1.516 2.46

August 19, 2021

Kenneth C Gates
Iuka-Carmi Development LLC
PO BOX 847
PRATT, KS 67124-0847

Re: Temporary Abandonment
API 15-151-22164-00-00
LUDERS B 8
SW/4 Sec.07-27S-12W
Pratt County, Kansas

Dear Kenneth C Gates:

"Your temporary abandonment (TA) application for the well listed above has been approved. In accordance with K.A.R. 82-3-111 the TA status of this well will expire 08/19/2022.

- * If you return this well to service or plug it, please notify the District Office.
- * If you sell this well you are required to file a Transfer of Operator form, T-1.
- * If the well will remain temporarily abandoned, you must submit a new TA application, CP-111, before 08/19/2022.

You may contact me at the number above if you have questions.

Very truly yours,

Michael Maier"