

KANSAS CORPORATION COMMISSION
OIL & GAS CONSERVATION DIVISION

TEMPORARY ABANDONMENT WELL APPLICATION

OPERATOR: License#
Name:
Address 1:
Address 2:
City: State: Zip:
Contact Person:
Phone:
Contact Person Email:
Field Contact Person:
Field Contact Person Phone:

API No. 15-
Spot Description:
Sec. Twp. S. R.
GPS Location: Lat: Long:
Datum: NAD27 NAD83 WGS84
County: Elevation:
Lease Name: Well #:
Well Type: Oil Gas OG WSW Other:
SWD Permit #: ENHR Permit #:
Gas Storage Permit #:
Spud Date: Date Shut-In:

Table with 7 columns: Conductor, Surface, Production, Intermediate, Liner, Tubing. Rows include Size, Setting Depth, Amount of Cement, Top of Cement, Bottom of Cement.

Casing Fluid Level from Surface: How Determined? Date:
Casing Squeeze(s): to w / sacks of cement, to w / sacks of cement. Date:
Do you have a valid Oil & Gas Lease? Yes No
Depth and Type: Junk in Hole at Tools in Hole at Casing Leaks: Yes No Depth of casing leak(s):
Type Completion: ALT. I ALT. II Depth of: DV Tool: w / sacks of cement Port Collar: w / sack of cement
Packer Type: Size: Inch Set at: Feet
Total Depth: Plug Back Depth: Plug Back Method:

Geological Data:

Table with 4 columns: Formation Name, Formation Top, Formation Base, Completion Information. Rows 1 and 2.

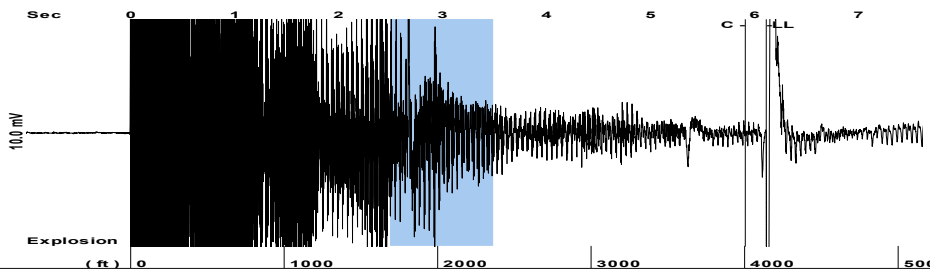
UNDER PENALTY OF PERJURY I HEREBY ATTEST THAT THE INFORMATION CONTAINED HEREIN IS TRUE AND CORRECT TO THE BEST OF MY KNOWLEDGE

Submitted Electronically

Do NOT Write in This Space - KCC USE ONLY
Date Tested: Results: Date Plugged: Date Repaired: Date Put Back in Service:
Review Completed by: Comments:
TA Approved: Yes Denied Date:

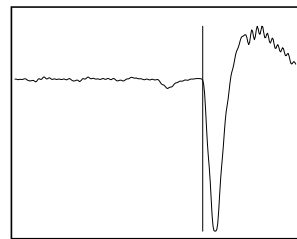
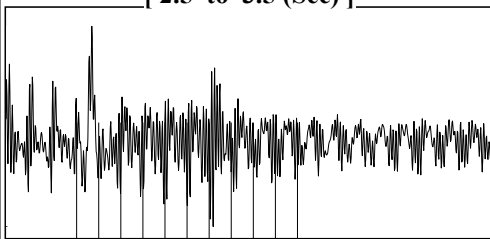
Mail to the Appropriate KCC Conservation Office:

Table with 3 columns: District Office #, Address, Phone. Rows 1-4.



Filter Type High Pass Automatic Collar Count Yes Time 6.114 sec  
 Manual Acoustic Velo 1399.56 ft/s Manual JTS/sec 22.0751 Joints 130.613 Jts  
 Depth 4140.44 ft

[ 2.5 to 3.5 (Sec) ]

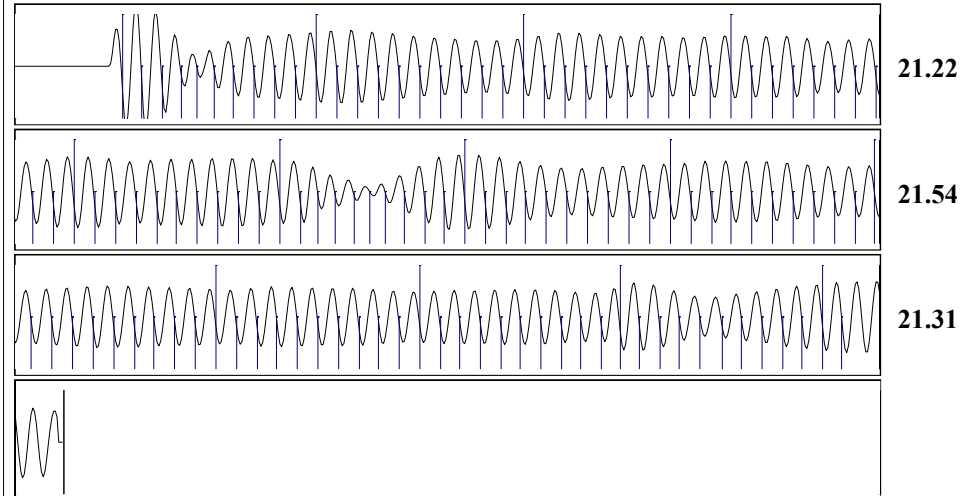
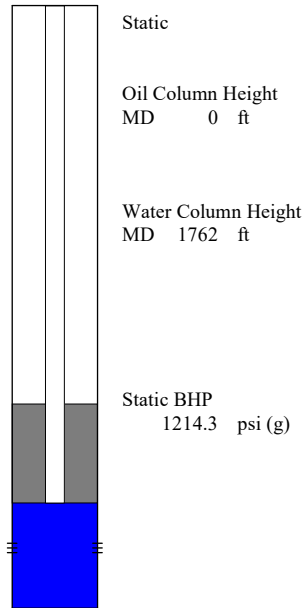


**Analysis Method: Automatic**

**NO PRESSURE DATA AVAILABLE**

Change in Pressure 0.00 psi PT 14970  
 Range 0 - ? psi  
 Change in Time 0.00 min

<b>Production</b>		<b>Potential</b>		<b>Casing Pressure</b>	
Current	- * -	BBL/D	- * -	375.8	psi (g)
Oil	- * -	BBL/D	- * -	Casing Pressure Buildup	
Water	- * -	Mscf/D	- * -	-0.030	psi
Gas	- * -			1.50	min
<b>IPR Method</b>		<b>Vogel</b>		<b>Gas/Liquid Interface Pressure</b>	
PBHP/SBHP	- * -			413.4	psi (g)
Production Efficiency	0.0				
<b>Oil</b>		<b>deg.API</b>		<b>Liquid Level Depth</b>	
40				4140.44	ft
<b>Water</b>		<b>Sp.Gr.H2O</b>		<b>Pump Intake Depth</b>	
1.05				5357.00	ft
<b>Gas</b>		<b>Sp.Gr.AIR</b>		<b>Formation Depth</b>	
0.62				5902.00	ft
<b>Acoustic Velocity</b>		<b>ft/s</b>			
1354.41					



Acoustic Velocity	1354.41 ft/s	Joints counted	121
Joints Per Second	21.363 jts/sec	Joints to liquid level	130.613
Depth to liquid level	4140.44 ft	Filter Width	20.0751
Automatic Collar Count	Yes	Time to 1st Collar	0.248
			5.912

August 19, 2021

Justin Prater  
StrataKan Exploration, LLC  
100 S MAIN ST  
PLAINVILLE, KS 67663-2234

Re: Temporary Abandonment  
API 15-033-21708-01-00  
THYME 3419 3-5H  
NW/4 Sec.05-34S-19W  
Comanche County, Kansas

Dear Justin Prater:

"Your temporary abandonment (TA) application for the well listed above has been approved. In accordance with K.A.R. 82-3-111 the TA status of this well will expire 08/19/2022.

- \* If you return this well to service or plug it, please notify the District Office.
- \* If you sell this well you are required to file a Transfer of Operator form, T-1.
- \* If the well will remain temporarily abandoned, you must submit a new TA application, CP-111, before 08/19/2022.

You may contact me at the number above if you have questions.

Very truly yours,

Michael Maier"