

KANSAS CORPORATION COMMISSION
OIL & GAS CONSERVATION DIVISION

TEMPORARY ABANDONMENT WELL APPLICATION

OPERATOR: License# _____
 Name: _____
 Address 1: _____
 Address 2: _____
 City: _____ State: _____ Zip: _____ + _____
 Contact Person: _____
 Phone: (_____) _____
 Contact Person Email: _____
 Field Contact Person: _____
 Field Contact Person Phone: (_____) _____

API No. 15- _____
 Spot Description: _____
 _____ - _____ - _____ - _____ Sec. _____ Twp. _____ S. R. _____ E W
 _____ feet from N / S Line of Section
 _____ feet from E / W Line of Section
 GPS Location: Lat: _____, Long: _____
(e.g. xx.xxxxx) (e.g. -xxx.xxxxx)
 Datum: NAD27 NAD83 WGS84
 County: _____ Elevation: _____ GL KB
 Lease Name: _____ Well #: _____
 Well Type: (check one) Oil Gas OG WSW Other: _____
 SWD Permit #: _____ ENHR Permit #: _____
 Gas Storage Permit #: _____
 Spud Date: _____ Date Shut-In: _____

	Conductor	Surface	Production	Intermediate	Liner	Tubing
Size						
Setting Depth						
Amount of Cement						
Top of Cement						
Bottom of Cement						

Casing Fluid Level from Surface: _____ How Determined? _____ Date: _____
 Casing Squeeze(s): _____ to _____ w / _____ sacks of cement, _____ to _____ w / _____ sacks of cement. Date: _____
(top) (bottom) (top) (bottom)
 Do you have a valid Oil & Gas Lease? Yes No
 Depth and Type: Junk in Hole at _____ Tools in Hole at _____ Casing Leaks: Yes No Depth of casing leak(s): _____
(depth) (depth)
 Type Completion: ALT. I ALT. II Depth of: DV Tool: _____ w / _____ sacks of cement Port Collar: _____ w / _____ sack of cement
(depth) (depth)
 Packer Type: _____ Size: _____ Inch Set at: _____ Feet
 Total Depth: _____ Plug Back Depth: _____ Plug Back Method: _____

Geological Data:

Formation Name	Formation Top	Formation Base	Completion Information
1. _____	At: _____	to _____ Feet	Perforation Interval _____ to _____ Feet or Open Hole Interval _____ to _____ Feet
2. _____	At: _____	to _____ Feet	Perforation Interval _____ to _____ Feet or Open Hole Interval _____ to _____ Feet

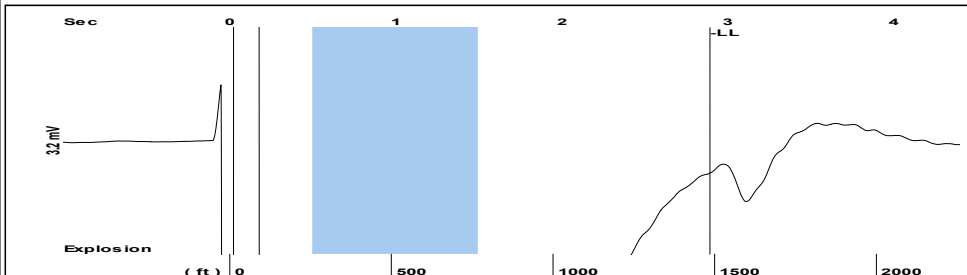
UNDER PENALTY OF PERJURY I HEREBY ATTEST THAT THE INFORMATION CONTAINED HEREIN IS TRUE AND CORRECT TO THE BEST OF MY KNOWLEDGE

Submitted Electronically

Do NOT Write in This Space - KCC USE ONLY	Date Tested: _____	Results: _____	Date Plugged: _____	Date Repaired: _____	Date Put Back in Service: _____
	Review Completed by: _____ Comments: _____				
TA Approved: <input type="checkbox"/> Yes <input type="checkbox"/> Denied Date: _____					

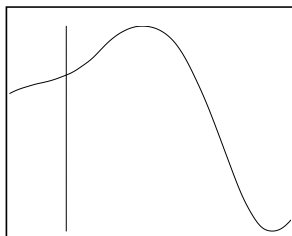
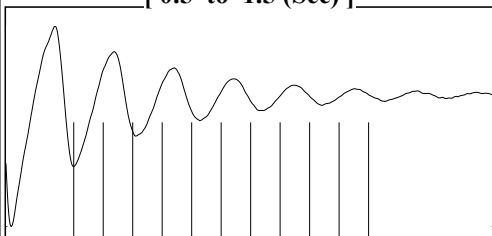
Mail to the Appropriate KCC Conservation Office:

	KCC District Office #1 - 210 E. Frontview, Suite A, Dodge City, KS 67801	Phone 620.682.7933
	KCC District Office #2 - 3450 N. Rock Road, Building 600, Suite 601, Wichita, KS 67226	Phone 316.337.7400
	KCC District Office #3 - 137 E. 21st St., Chanute, KS 66720	Phone 620.902.6450
	KCC District Office #4 - 2301 E. 13th Street, Hays, KS 67601-2651	Phone 785.261.6250

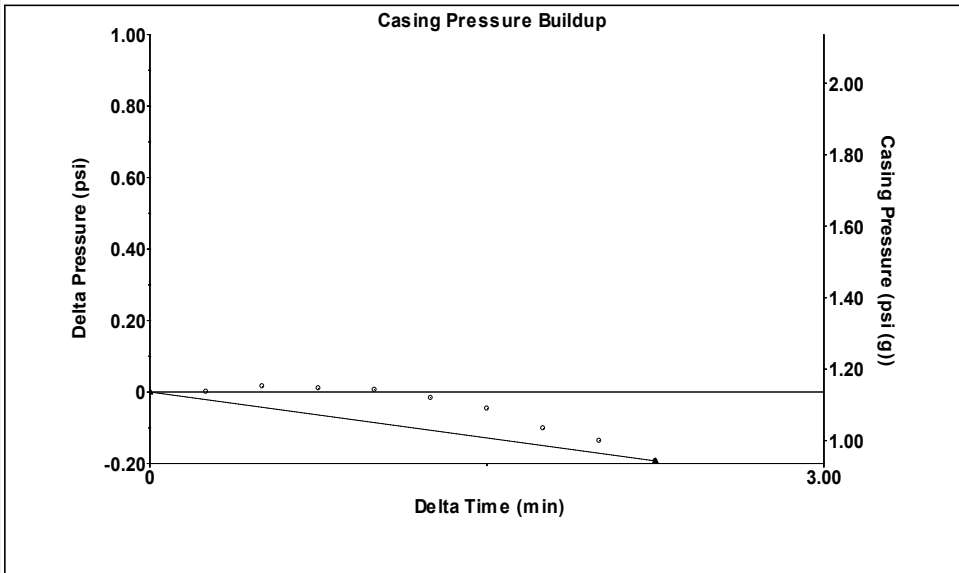


Filter Type High Pass Automatic Collar Count Yes Time 2.892 sec
 Manual Acoustic Velo 1027.11 ft/s Manual JTS/sec 16.5289 Joints 47.8017 Jts
 Depth 1485.20 ft

[0.5 to 1.5 (Sec)]

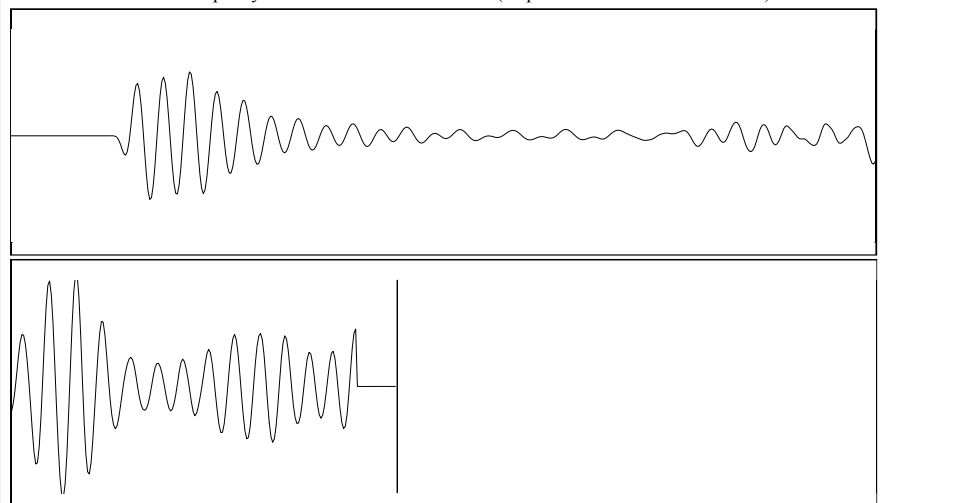


Analysis Method: Automatic



Change in Pressure -0.19 psi PT 17384
 Change in Time 2.25 min Range 0 - ? psi

Production					
Current	Potential	Casing Pressure	Producing		
Oil - *-	- *- BBL/D	1.1 psi (g)			
Water - *-	- *- BBL/D	Casing Pressure Buildup	Annular		
Gas - *-	- *- Mscf/D	-0.193 psi	Gas Flow	0 Mscf/D	
		2.25 min	% Liquid	100 %	
IPR Method	Vogel	Gas/Liquid Interface Pressure			
PBHP/SBHP	- *-	1.9 psi (g)			
Production Efficiency	0.0				
		Liquid Level Depth			
Oil 40 deg.API		1485.20 ft			
Water 1.05 Sp.Gr.H2O		Pump Intake Depth			
Gas 0.94 Sp.Gr.AIR		6409.00 ft			
Acoustic Velocity	1027.11 ft/s	Formation Depth			
		6409.00 ft			
Formation Submergence		Pump Intake			
Total Gaseous Liquid Column HT (TVD)	4924 ft	1557.0 psi (g)			
Equivalent Gas Free Liquid HT (TVD)	4924 ft	Producing BHP			
		1557.0 psi (g)			
Acoustic Test		Static BHP			
		- *- psi (g)			



Acoustic Velocity - *- ft/s Joints counted 0
 Joints Per Second - *- jts/sec Joints to liquid level - *-
 Depth to liquid level - *- ft Filter Width 14.5289
 Automatic Collar Count Yes Time to 1st Collar - *- - *-

August 26, 2021

Melody C. Fletcher
Oil Producers Inc. of Kansas
1710 WATERFRONT PKWY
WICHITA, KS 67206-6603

Re: Temporary Abandonment
API 15-175-21333-00-00
DOWDY 2-3
SW/4 Sec.03-35S-33W
Seward County, Kansas

Dear Melody C. Fletcher:

"Your temporary abandonment (TA) application for the well listed above has been approved. In accordance with K.A.R. 82-3-111 the TA status of this well will expire 08/26/2022.

- * If you return this well to service or plug it, please notify the District Office.
- * If you sell this well you are required to file a Transfer of Operator form, T-1.
- * If the well will remain temporarily abandoned, you must submit a new TA application, CP-111, before 08/26/2022.

You may contact me at the number above if you have questions.

Very truly yours,

Michael Maier"