

KANSAS CORPORATION COMMISSION
OIL & GAS CONSERVATION DIVISION

Form must be Typed
Form must be signed

TEMPORARY ABANDONMENT WELL APPLICATION

All blanks must be complete

OPERATOR: License#
Name:
Address 1:
Address 2:
City: State: Zip:
Contact Person:
Phone:
Contact Person Email:
Field Contact Person:
Field Contact Person Phone:

API No. 15-
Spot Description:
Sec. Twp. S. R.
feet from N / S Line of Section
feet from E / W Line of Section
GPS Location: Lat: , Long:
Datum: NAD27 NAD83 WGS84
County: Elevation: GL KB
Lease Name: Well #:
Well Type: Oil Gas OG WSW Other:
SWD Permit #: ENHR Permit #:
Gas Storage Permit #:
Spud Date: Date Shut-In:

Table with 7 columns: Conductor, Surface, Production, Intermediate, Liner, Tubing. Rows include Size, Setting Depth, Amount of Cement, Top of Cement, Bottom of Cement.

Casing Fluid Level from Surface: How Determined? Date:
Casing Squeeze(s): to w / sacks of cement, to w / sacks of cement. Date:
Do you have a valid Oil & Gas Lease? Yes No
Depth and Type: Junk in Hole at Tools in Hole at Casing Leaks: Yes No Depth of casing leak(s):
Type Completion: ALT. I ALT. II Depth of: DV Tool: w / sacks of cement Port Collar: w / sack of cement
Packer Type: Size: Inch Set at: Feet
Total Depth: Plug Back Depth: Plug Back Method:

Geological Data:

Table with 4 columns: Formation Name, Formation Top, Formation Base, Completion Information. Rows 1 and 2.

UNDER PENALTY OF PERJURY I HEREBY ATTEST THAT THE INFORMATION CONTAINED HEREIN IS TRUE AND CORRECT TO THE BEST OF MY KNOWLEDGE

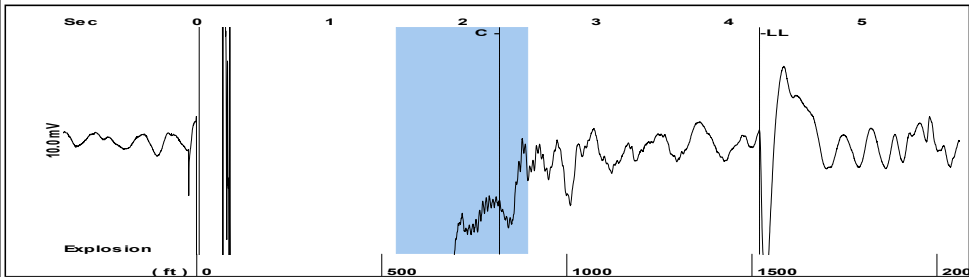
Submitted Electronically

Do NOT Write in This Space - KCC USE ONLY
Date Tested: Results: Date Plugged: Date Repaired: Date Put Back in Service:
Review Completed by: Comments:
TA Approved: Yes Denied Date:

Mail to the Appropriate KCC Conservation Office:

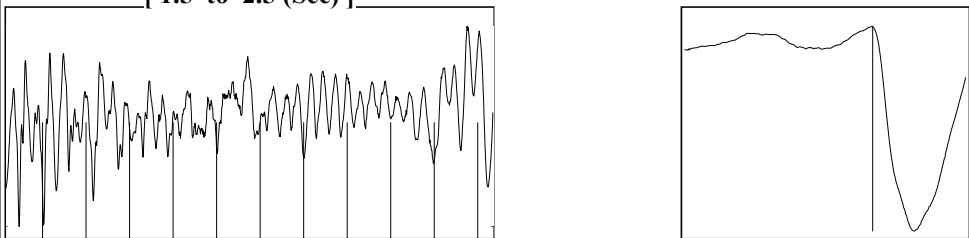
Table with 3 columns: District Office #, Address, Phone. Rows 1-4.

Group: MyWells Well: Smith-MJ # 1 (acquired on: 08/09/21 10:55:15)



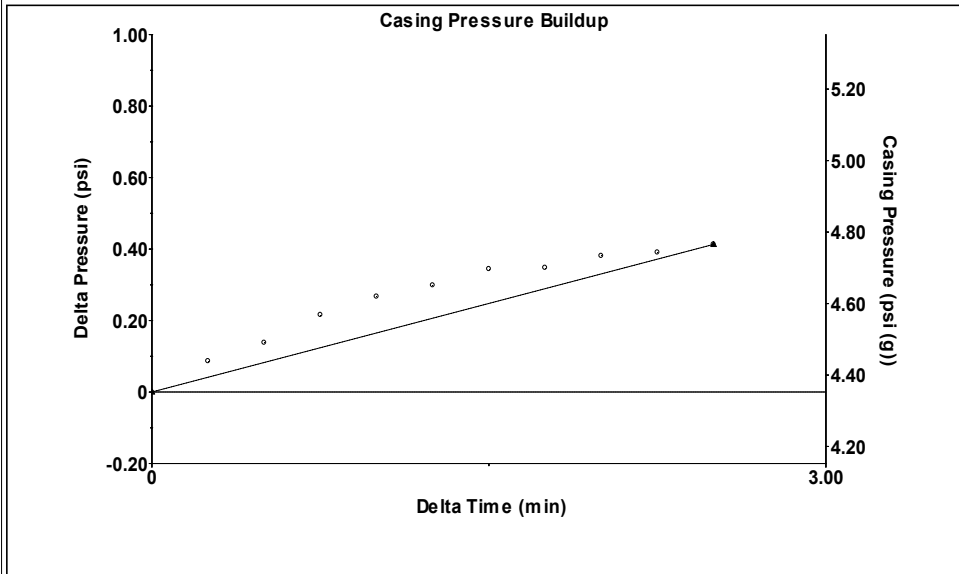
Filter Type High Pass Automatic Collar Count Yes Time 4.231 sec
 Manual Acoustic Velo 719.597 ft/s Manual JTS/sec 11.1982 Joints 47.3204 Jts
 Depth 1520.40 ft

[1.5 to 2.5 (Sec)]



Analysis Method: Automatic

Group: MyWells Well: Smith-MJ # 1 (acquired on: 08/09/21 10:55:15)

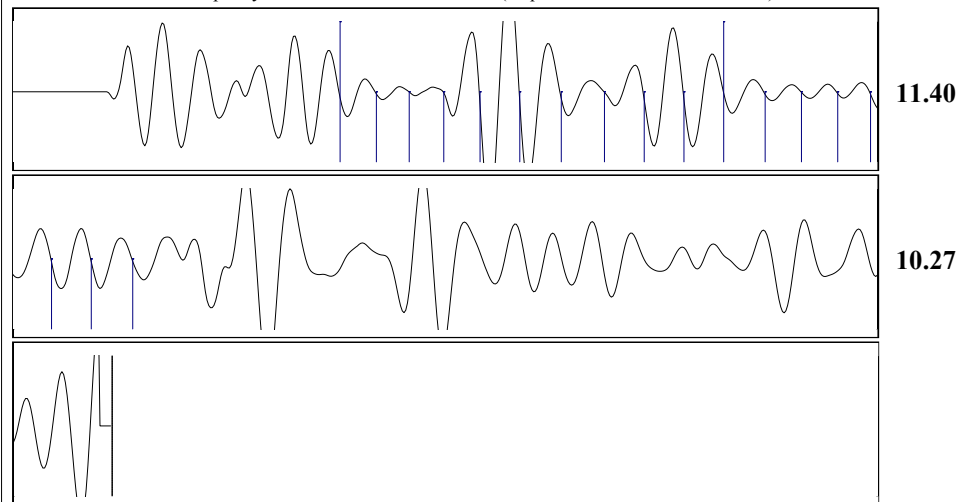


Change in Pressure 0.41 psi PT 17384
 Change in Time 2.50 min Range 0 - ? psi

Group: MyWells Well: Smith-MJ # 1 (acquired on: 08/09/21 10:55:15)

<p>Production</p> <p>Current Potential</p> <p>Oil - * - BBL/D</p> <p>Water - * - BBL/D</p> <p>Gas - * - Mscf/D</p> <p>IPR Method Vogel</p> <p>PBHP/SBHP - * -</p> <p>Production Efficiency 0.0</p> <p>Oil 40 deg.API</p> <p>Water 1.05 Sp.Gr.H2O</p> <p>Gas 1.24 Sp.Gr.AIR</p> <p>Acoustic Velocity 718.697 ft/s</p> <p>Formation Submergence</p> <p>Total Gaseous Liquid Column HT (TVD) 1240 ft</p> <p>Equivalent Gas Free Liquid HT (TVD) 1106 ft</p> <p>Acoustic Test</p>	<p>Casing Pressure 4.4 psi (g)</p> <p>Casing Pressure Buildup 0.4 psi</p> <p>Gas/Liquid Interface Pressure 5.6 psi (g)</p> <p>Liquid Level Depth 1520.40 ft</p> <p>Pump Intake Depth 2760.00 ft</p> <p>Formation Depth 2760.00 ft</p> <p>Pump Intake 381.4 psi (g)</p> <p>Producing BHP 381.4 psi (g)</p> <p>Static BHP - * - psi (g)</p>	<p>Producing</p> <p>Annular Gas Flow 3 Mscf/D</p> <p>% Liquid 89 %</p>	
--	---	--	--

Group: MyWells Well: Smith-MJ # 1 (acquired on: 08/09/21 10:55:15)



Acoustic Velocity 718.697 ft/s Joints counted 17
 Joints Per Second 11.1842 jts/sec Joints to liquid level 47.3204
 Depth to liquid level 1520.4 ft Filter Width 9.19821 13.1982
 Automatic Collar Count Yes Time to 1st Collar 0.756 2.276

August 26, 2021

Connie Ball
Oil Producers Inc. of Kansas
1710 WATERFRONT PKWY
WICHITA, KS 67206-6603

Re: Temporary Abandonment
API 15-055-00266-00-00
PRUSS-SMITH 1
NW/4 Sec.35-22S-32W
Finney County, Kansas

Dear Connie Ball :

"Your temporary abandonment (TA) application for the well listed above has been approved. In accordance with K.A.R. 82-3-111 the TA status of this well will expire 08/26/2022.

- * If you return this well to service or plug it, please notify the District Office.
- * If you sell this well you are required to file a Transfer of Operator form, T-1.
- * If the well will remain temporarily abandoned, you must submit a new TA application, CP-111, before 08/26/2022.

You may contact me at the number above if you have questions.

Very truly yours,

Michael Maier"