

KANSAS CORPORATION COMMISSION
OIL & GAS CONSERVATION DIVISION

TEMPORARY ABANDONMENT WELL APPLICATION

OPERATOR: License#
Name:
Address 1:
Address 2:
City: State: Zip:
Contact Person:
Phone:
Contact Person Email:
Field Contact Person:
Field Contact Person Phone:

API No. 15-
Spot Description:
Sec. Twp. S. R.
GPS Location: Lat, Long
Datum: NAD27, NAD83, WGS84
County: Elevation:
Lease Name: Well #:
Well Type: Oil, Gas, OG, WSW, Other
SWD Permit #: ENHR Permit #:
Gas Storage Permit #:
Spud Date: Date Shut-In:

Table with 7 columns: Conductor, Surface, Production, Intermediate, Liner, Tubing. Rows include Size, Setting Depth, Amount of Cement, Top of Cement, Bottom of Cement.

Casing Fluid Level from Surface: How Determined? Date:
Casing Squeeze(s): to w / sacks of cement, to w / sacks of cement. Date:
Do you have a valid Oil & Gas Lease? Yes No
Depth and Type: Junk in Hole at Tools in Hole at Casing Leaks: Yes No Depth of casing leak(s):
Type Completion: ALT. I ALT. II Depth of: DV Tool: w / sacks of cement Port Collar: w / sack of cement
Packer Type: Size: Inch Set at: Feet
Total Depth: Plug Back Depth: Plug Back Method:

Geological Data:

Table with 4 columns: Formation Name, Formation Top, Formation Base, Completion Information. Rows 1 and 2.

UNDER PENALTY OF PERJURY I HEREBY ATTEST THAT THE INFORMATION CONTAINED HEREIN IS TRUE AND CORRECT TO THE BEST OF MY KNOWLEDGE

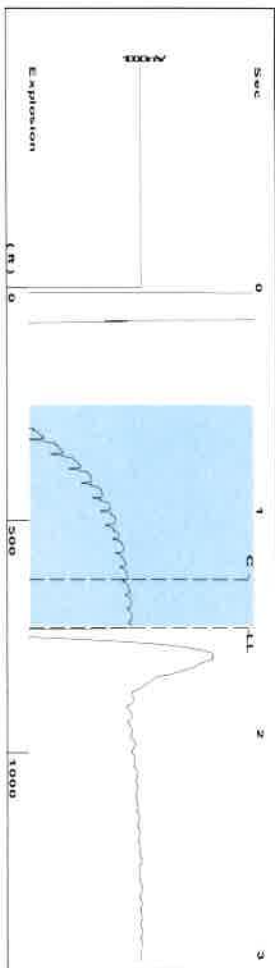
Submitted Electronically

Do NOT Write in This Space - KCC USE ONLY
Date Tested: Results: Date Plugged: Date Repaired: Date Put Back in Service:
Review Completed by: Comments:
TA Approved: Yes Denied Date:

Mail to the Appropriate KCC Conservation Office:

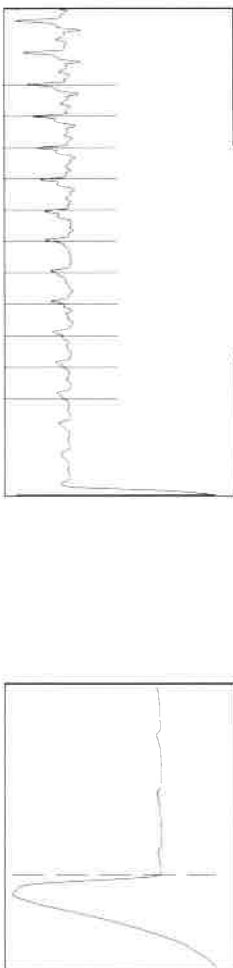
Table with 3 columns: District Office, Address, Phone. Rows for District Office #1, #2, #3, #4.

Group: EDISON OPERATING Well: MORGENSTERN 1-33 (acquired on: 08/25/21 09:40:03)



Filter Type High Pass Automatic Collar Count Yes
 Manual Acoustic Velocity 643 ft/s Manual JTS/sec 15 5039
 Time 1 524 sec
 Joints 23 2672 Jts
 Depth 730 59 ft

0.5 to 1.5 (Sec)



Analysis Method: Automatic

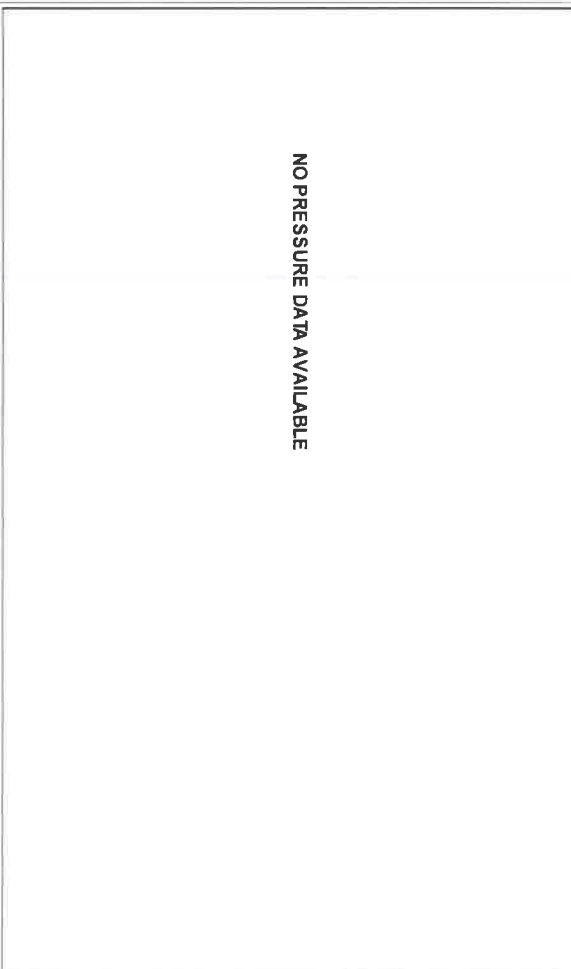
Group: EDISON OPERATING Well: MORGENSTERN 1-33 (acquired on: 08/25/21 09:40:03)

Production	Potential	Casing Pressure	Static
Current	Oil - * - BBL/D	17.7 psi (g)	Oil Column Height
Oil - * -	Water - * - BBL/D	Casing Pressure Buildup	MD 0 ft
Water - * -	Gas - * - Mscf/D	-0.2 psi	Water Column Height
Gas - * -		1.25 min	MD 2613 ft
IPR Method		Gas/Liquid Interface Pressure	
PBHP/SBHP	Vogel	18.5 psi (g)	
Production Efficiency	0.0		
Oil 40 deg API	Liquid Level Depth		
Water 1.05 Sp Gr H2O	730.59 ft		
Gas 1.00 Sp Gr AIR	Pump Intake Depth		
Acoustic Velocity	3392.00 ft		
958.779 ft/s	Formation Depth		
	3344.00 ft		

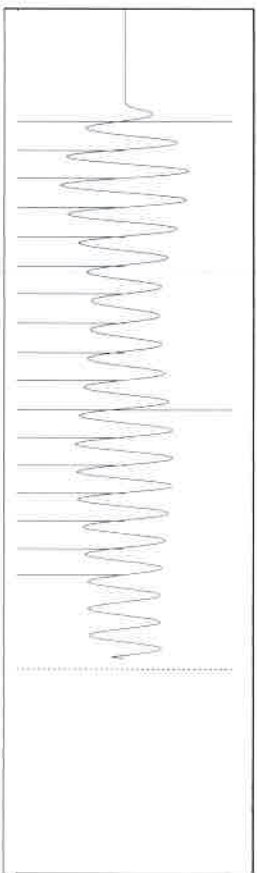


Static BHP
1206.7 psi (g)

Group: EDISON OPERATING Well: MORGENSTERN 1-33 (acquired on: 08/25/21 09:40:03)



Group: EDISON OPERATING Well: MORGENSTERN 1-33 (acquired on: 08/25/21 09:40:03)



15.27

Acoustic Velocity	958.779 ft/s	Joints counted	16
Joints Per Second	15.2672 Jts/sec	Joints to liquid level	23 2672
Depth to liquid level	730.589 ft	Filter Width	13 5039
Automatic Collar Count	Yes	Time to 1st Collar	0.26
			1.308

Conservation Division
District Office No. 4
2301 E. 13th Street
Hays, KS 67601-2651



Phone: 785-261-6250
Fax: 785-625-0564
<http://kcc.ks.gov/>

Andrew J. French, Chairperson
Dwight D. Keen, Commissioner
Susan K. Duffy, Commissioner

Laura Kelly, Governor

August 26, 2021

BRIAN J MCCOY
Edison Operating Company LLC
8100 E. 22ND ST. N., BLDG 1900
WICHITA, KS 67226-2319

Re: Temporary Abandonment
API 15-009-25759-00-00
MORGENSTERN 1-33
SW/4 Sec.33-17S-13W
Barton County, Kansas

Dear BRIAN J MCCOY:

Your application for Temporary Abandonment (TA) for the above-listed well is denied for the following reasons(s):

High Fluid Level

Pursuant to K.A.R. 82-3-111, the well must be plugged, or returned to service, or obtain temporary abandonment status by 09/25/2021.

This deadline does NOT override any compliance deadline given to you in any Commission Order.

You may contact me if you have any questions.

Sincerely,
RICHARD WILLIAMS
KCC DISTRICT 4