

KANSAS CORPORATION COMMISSION
OIL & GAS CONSERVATION DIVISION

TEMPORARY ABANDONMENT WELL APPLICATION

OPERATOR: License#
Name:
Address 1:
Address 2:
City: State: Zip:
Contact Person:
Phone:
Contact Person Email:
Field Contact Person:
Field Contact Person Phone:

API No. 15-
Spot Description:
Sec. Twp. S. R.
GPS Location: Lat: Long:
Datum: NAD27 NAD83 WGS84
County: Elevation:
Lease Name: Well #:
Well Type: Oil Gas OG WSW Other:
SWD Permit #: ENHR Permit #:
Gas Storage Permit #:
Spud Date: Date Shut-In:

Table with 7 columns: Conductor, Surface, Production, Intermediate, Liner, Tubing. Rows include Size, Setting Depth, Amount of Cement, Top of Cement, Bottom of Cement.

Casing Fluid Level from Surface: How Determined? Date:
Casing Squeeze(s): to w / sacks of cement, to w / sacks of cement. Date:
Do you have a valid Oil & Gas Lease? Yes No
Depth and Type: Junk in Hole at Tools in Hole at Casing Leaks: Yes No Depth of casing leak(s):
Type Completion: ALT. I ALT. II Depth of: DV Tool: w / sacks of cement Port Collar: w / sack of cement
Packer Type: Size: Inch Set at: Feet
Total Depth: Plug Back Depth: Plug Back Method:

Geological Data:

Table with 4 columns: Formation Name, Formation Top, Formation Base, Completion Information. Rows 1 and 2.

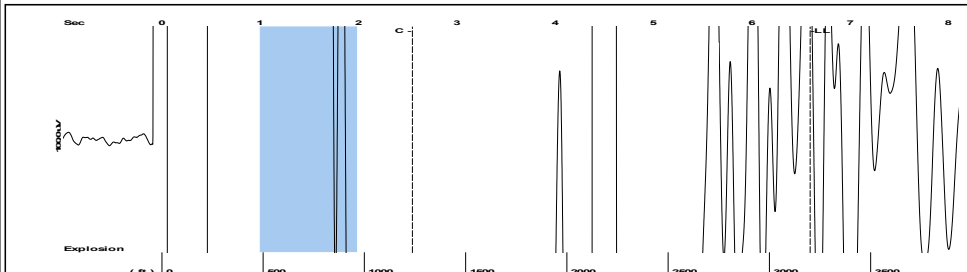
UNDER PENALTY OF PERJURY I HEREBY ATTEST THAT THE INFORMATION CONTAINED HEREIN IS TRUE AND CORRECT TO THE BEST OF MY KNOWLEDGE

Submitted Electronically

Do NOT Write in This Space - KCC USE ONLY
Date Tested: Results: Date Plugged: Date Repaired: Date Put Back in Service:
Review Completed by: Comments:
TA Approved: Yes Denied Date:

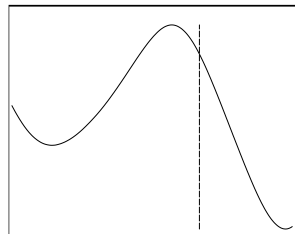
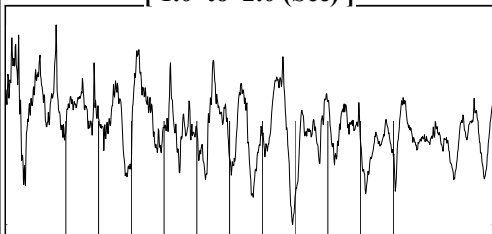
Mail to the Appropriate KCC Conservation Office:

Map of Kansas with 4 numbered districts and corresponding office addresses and phone numbers.



Filter Type High Pass Automatic Collar Count Yes Time 6.594 sec
 Manual Acoustic Veloc 942.051 ft/s Manual JTS/sec 14.8588 Joints 100.989 Jts
 Depth 3201.36 ft

[1.0 to 2.0 (Sec)]

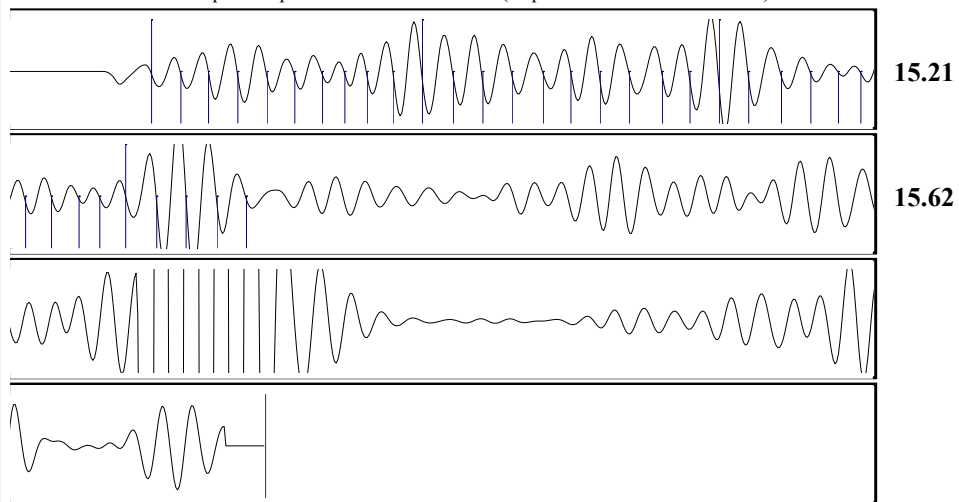


Analysis Method: Automatic



Change in Pressure 0.00 psi PT18514
 Range 0 - ? psi
 Change in Time 0.00 min

Production	Potential	Casing Pressure		Producing
Current		0.0 psi (g)		Annular
Oil - *-	- *- BBL/D	Casing Pressure Buildup		Gas Flow
Water - *-	- *- BBL/D	- *- psi		- *- Mscf/D
Gas - *-	- *- Mscf/D	- *- min		% Liquid
IPR Method	Vogel	Gas/Liquid Interface Pressure		100 %
PBHP/SBHP	- *-	- *- psi (g)		
Production Efficiency	0.0	Liquid Level Depth		
Oil 40 deg.API		3201.36 ft		
Water 1.05 Sp.Gr.H2O		Pump Intake Depth		
Gas 1.01 Sp.Gr.AIR		- *- ft		
Acoustic Velocity	970.991 ft/s	Formation Depth		
		4611.00 ft		
Formation Submergence		Pump Intake		
Total Gaseous Liquid Column HT (TVD)		- *- psi (g)		
Equivalent Gas Free Liquid HT (TVD)		Producing BHP		
		- *- psi (g)		
Acoustic Test		Static BHP		
		- *- psi (g)		



Acoustic Velocity 970.991 ft/s Joints counted 34
 Joints Per Second 15.3153 jts/sec Joints to liquid level 100.989
 Depth to liquid level 3201.36 ft Filter Width 12.8588 16.8588
 Automatic Collar Count Yes Time to 1st Collar 0.328 2.548

August 26, 2021

Jose Reyes
American Warrior, Inc.
PO BOX 399
GARDEN CITY, KS 67846-0399

Re: Temporary Abandonment
API 15-101-21736-00-00
GRUSING 1
SE/4 Sec.13-17S-30W
Lane County, Kansas

Dear Jose Reyes:

"Your temporary abandonment (TA) application for the well listed above has been approved. In accordance with K.A.R. 82-3-111 the TA status of this well will expire 08/26/2022.

- * If you return this well to service or plug it, please notify the District Office.
- * If you sell this well you are required to file a Transfer of Operator form, T-1.
- * If the well will remain temporarily abandoned, you must submit a new TA application, CP-111, before 08/26/2022.

You may contact me at the number above if you have questions.

Very truly yours,

Michael Maier"