

**OPERATOR**

Company: Charles N. Griffin  
Address: PO Box 347  
Pratt, KS 67124

Contact Geologist:  
Contact Phone Nbr:  
Well Name: #5 Addie  
Location: Section 28-29S-15W  
API: 15-151-22493  
Pool:  
State: Kansas

Field: Croft  
Country: USA

Scale 1:240 Imperial

Well Name: #5 Addie  
Surface Location: Section 28-29S-15W  
Bottom Location: API: 15-151-22493  
License Number: 5/17/2019  
Spud Date: Pratt County  
Region: 5/22/2019  
Drilling Completed: 330' FSL & 1370' FWL  
Surface Coordinates: 1977.00ft  
Bottom Hole Coordinates: 1988.00ft  
Ground Elevation: 3800.00ft  
K.B. Elevation: 4810.00ft  
Logged Interval: Total Depth:  
Formation: 4810.00ft  
Drilling Fluid Type: Chemical (MudCo)

Time: 3:30 PM

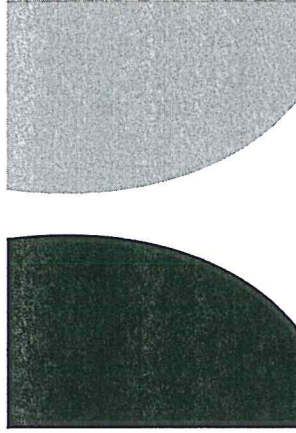
Time: 4:00 AM

To: 4810.00ft

**SURFACE CO-ORDINATES**

Well Type: Vertical  
Longitude:  
Latitude: 330' FSL  
N/S Co-ord: 1370' FWL  
E/W Co-ord:

**LOGGED BY**



**TERRATECH**  
ENERGY SERVICE, LLC

Company: TerraTech Energy Service LLC.  
Address: 1632 S. West St, Suite 12  
Wichita, KS 67208

Phone Nbr: 316-617-3959  
Logged By: Geologist

Name: Bruce Reed

**CONTRACTOR**

Contractor: WW Drilling  
 Rig #: 14  
 Rig Type: mud rotary  
 Spud Date: 5/17/2019  
 TD Date: 5/22/2019  
 Rig Release: 5/23/2019

Time: 3:30 PM  
 Time: 4:00 AM  
 Time: 1:00 PM

**ELEVATIONS**

K.B. Elevation: 1988.00ft  
 K.B. to Ground: 11.00ft  
 Ground Elevation: 1977.00ft

**NOTES**

Surface Casing: 8-5/8" at 267'  
 Production Casing: 5-1/2" at 4810'

Daily Penetration: 05/18/19 267' Spud @ 3:30 PM 05/19/19 3670'  
 2252'

05/22/19 4810' RTD @ 4:00 AM 05/20/19 4500'  
 05/23/19 4810' Rig released @ 1:00 PM

**FORMATION TOPS**

Formation	Sample Top	Datum	Log Top	Datum Comparison*
Heebner	3902'	-1914	3902'	-1914 -3
Brown Lime	4070'	-2082	4068'	-2080 -7
Lansing	4083'	-2095	4083'	-2095 -8
Stark	4345'	-2357	4344'	-2356 -7
Base KC	4472'	-2484	4475'	-2487 -8
Pawnee	4535'	-2547	4536'	-2548 -11
Cherokee	4571'	-2583	4573'	-2585 -13
Viola	4611'	-2623	4610'	-2622 -25
Simpson	4768'	-2780	4768'	-2780 -3

\*Charles N. Griffin, #2 Addie, 1190' FSL & 790' FWL, Section 28-29S-15W, Pratt County, Kansas

**ROCK TYPES**

Chl  
 Dolprim  
 Lmst lw7/> shale, gry  
 Carbon Sh  
 Ss

**INTERVALS**

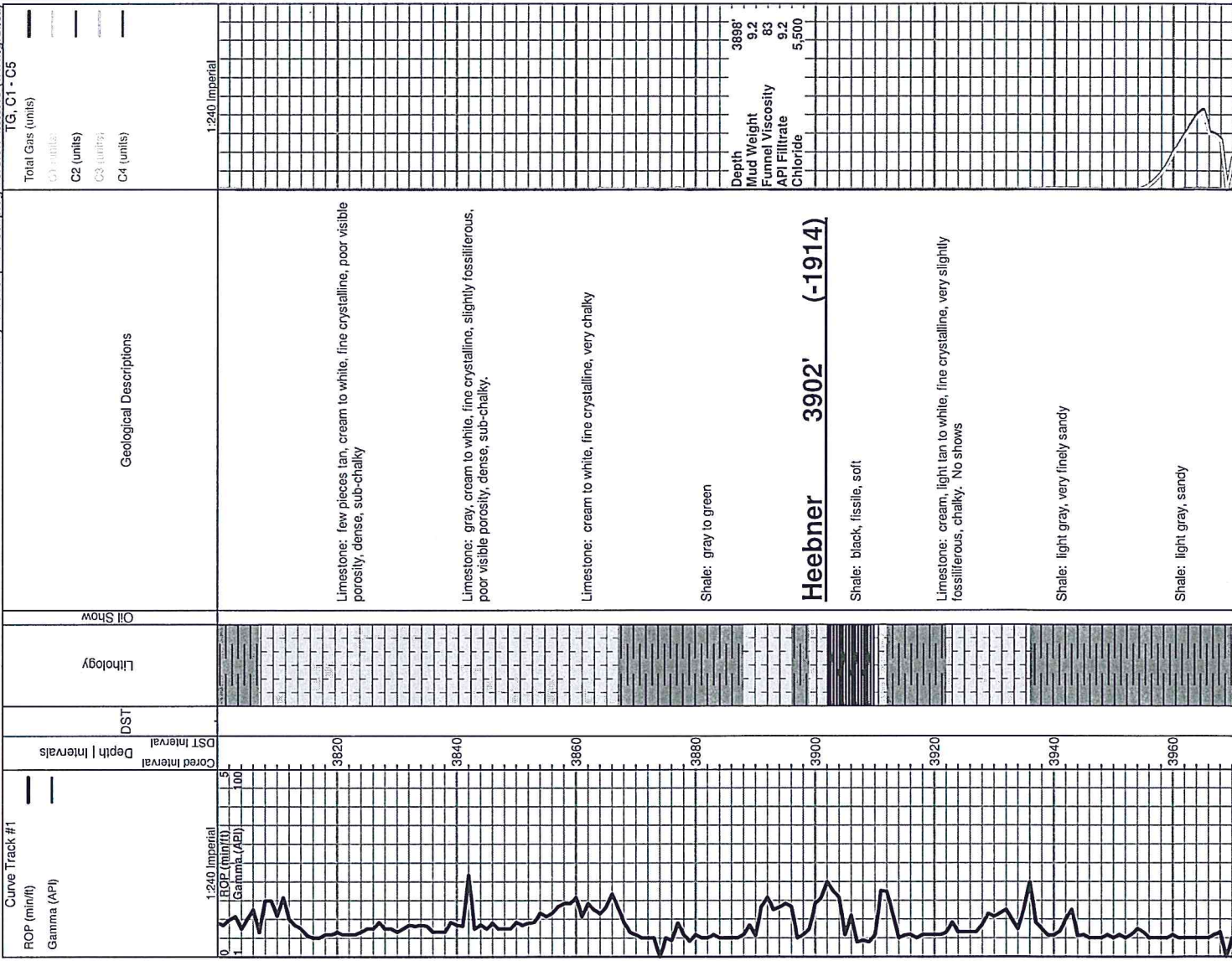
Core  
 DST  
 Oil Show  
 Good Show  
 Fair Show  
 Poor Show  
 Spotted or Trace  
 Questionable Str

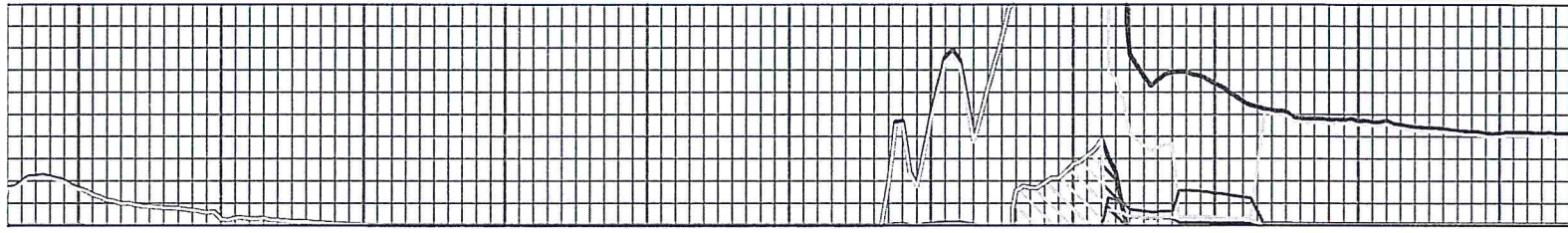
**OTHER SYMBOLS**

DST  
 DST Int  
 DST alt  
 Core  
 fall pipe

D Dead Oil Stn  
 ■ Fluorescence  
 \* Gas

Printed by GEOstrip VC Striplog version 4.0.8.15 (www.grsi.ca)





Shale: light gray, sandy

Sandstone: cream to light gray, very fine grained, micaceous

Sandstone: light gray, very fine grained

Sandstone: cream to light gray, fine grained

Sandstone: fine to very slightly medium grained

**Brown Lime 4066' (-2078)**

Limestone: light tan to brown, fine crystalline, dense

Shale: medium gray, green, brown

**Lansing 4083' (-2095)**

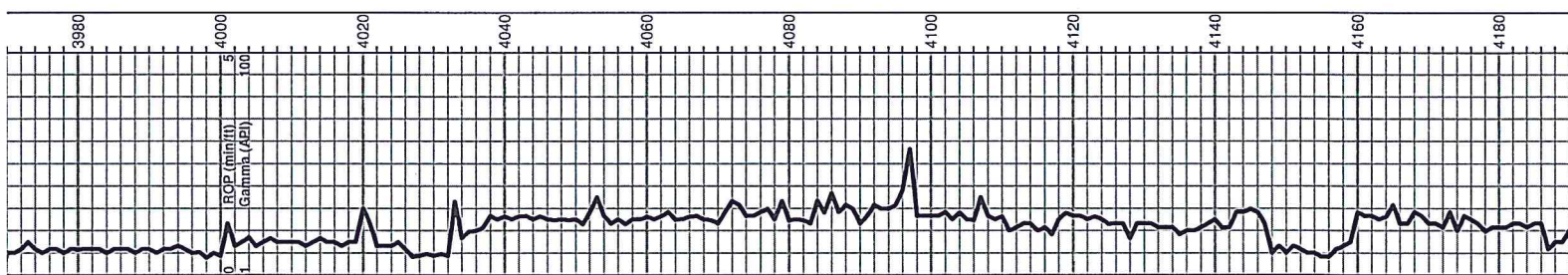
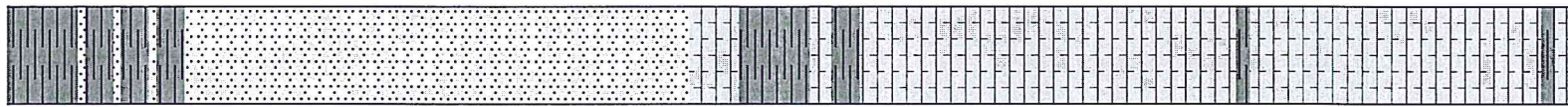
Limestone: cream to white, fine crystalline, poor visible porosity, sub-chalky. Note samples carry lots of sandstone

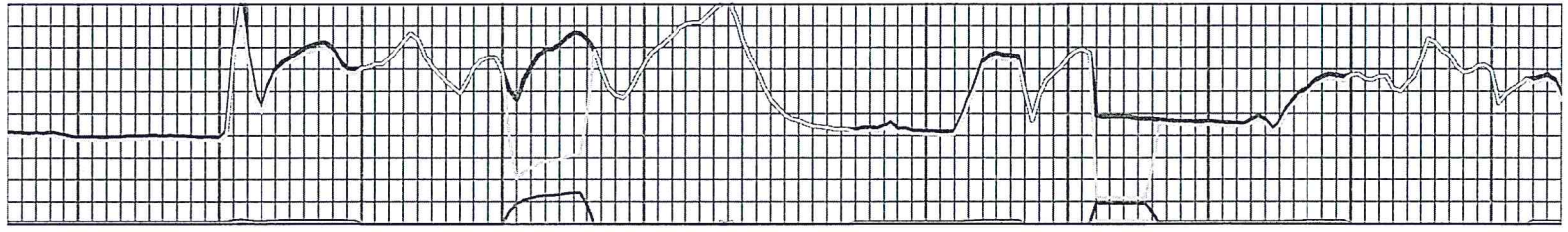
Limestone: cream, light tan to light gray, fine crystalline to fossiliferous, poor visible porosity. Note samples carry lots of sandstone

Limestone: cream, fine crystalline, some small pinhead vug porosity

Poor quality sample

Limestone: cream to gray, fine crystalline, dense





Limestone: light brown, cream to gray, fine to slightly medium crystalline, poor visible porosity, dense.

Limestone: cream to light tan, some white, fine crystalline, poor visible porosity, sub-chalky. Note sample quality has improved

Limestone: cream to light tan, fine crystalline, mealy with some visible porosity

Limestone: cream to light tan, fine to rare medium piece, poor visible porosity

Limestone: no significant change

Limestone: cream to tan, light brown, fine crystalline slightly fossiliferous, poor visible porosity

Limestone: cream to light tan, some brown, fine crystalline, rare medium crystalline, dense

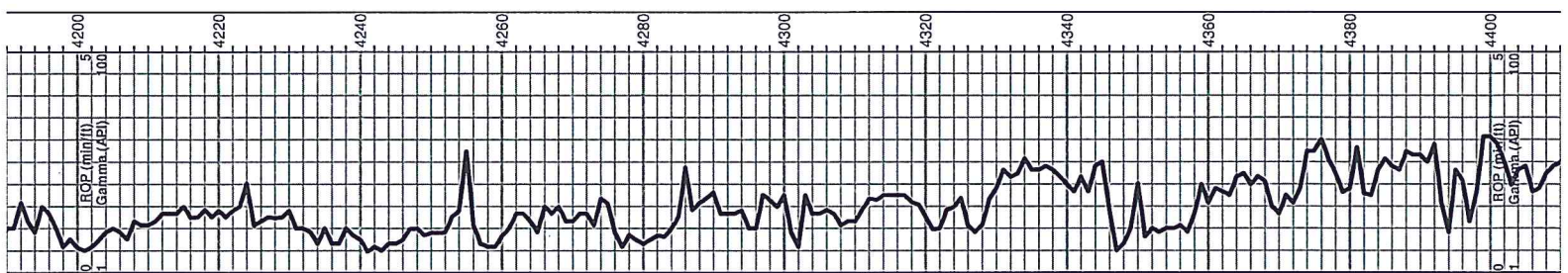
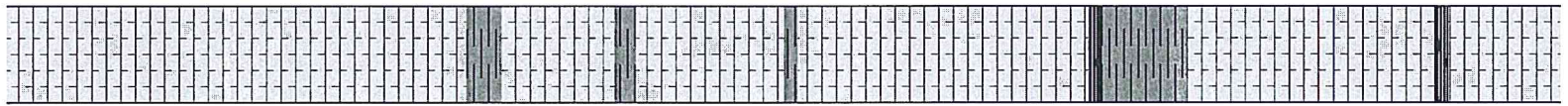
Limestone: light tan to brown, dense

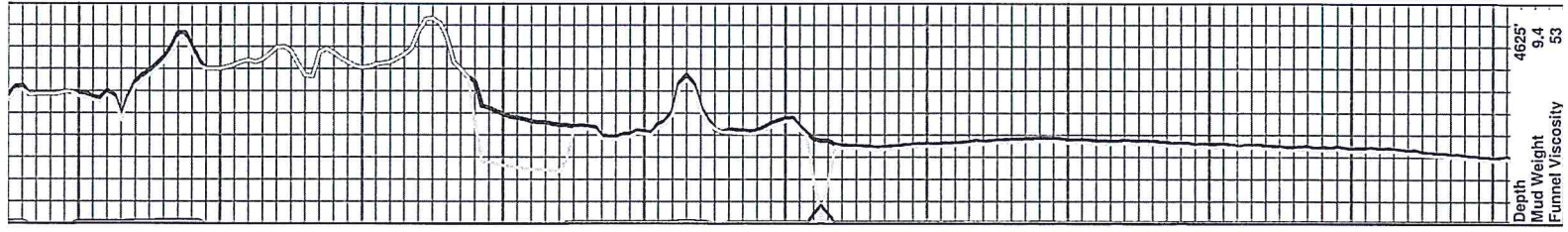
**Stark 4343' (-2355)**

Limestone: cream to light tan, fine crystalline, rare piece poorly developed oolitic porosity, sub-chalky, very faint odor, NSFO

Limestone: cream to white, fine crystalline, dense

Limestone: cream to white, fine crystalline, poor to no visible porosity, dense





Limestone: chalky white

Limestone: cream to gray, fine crystalline, poor to no visible porosity, sub-shaley

Limestone: cream to gray to light tan, fine crystalline, poor visible porosity. Sample carries lots gray to green shale

**B/KC 4472' (-2484)**

Shale: dark to medium gray, soft

Shale: gray. Note Bit Trip @ 4500. Changed from PDC to Button Bit

Limestone: cream to light tan, fine crystalline, few pieces pelletal, poor visible porosity, dense.

Limestone: cream, white to brown, fine to micro crystalline, no visible porosity, dense, some chalky material

**Pawnee 4535' (-2547)**

Limestone: as above

Limestone: cream to tan, fine to micro crystalline, very dense, some scattered gray brown shale.

Limestone: white, light tan, sub-chalky

Limestone: cream, white to light tan, fine to micro crystalline, no visible porosity, dense, sub-chalky

**Cherokee 4571' (-2583)**

Limestone as above

Shale: gray, green, brown and rust red. Limestone: cream to tan, fine crystalline, dense

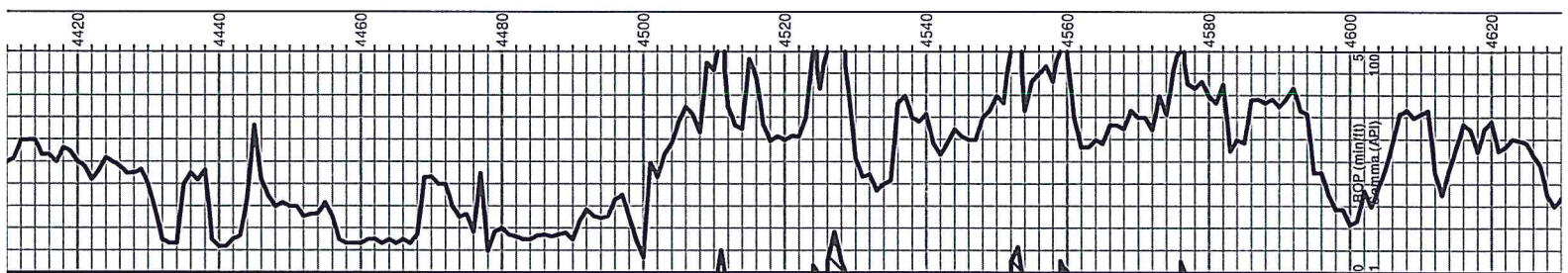
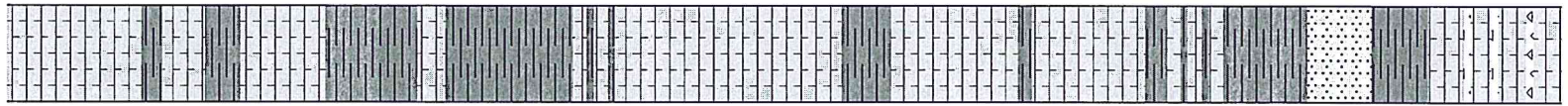
Shale: gray to green, some pieces hard and brittle, some scattered pyrite. One cluster light tan sandstone, poor visible porosity, no show

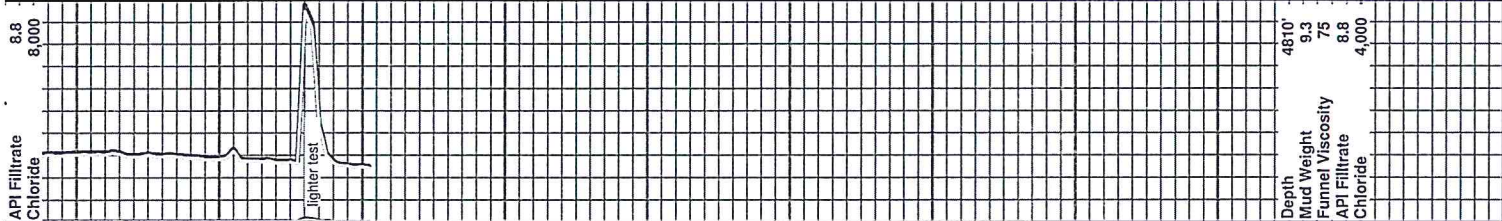
Limestone: cream, fine crystalline to slightly fossiliferous, abundant shale, gray, green, scattered few sandstone clusters, light, NS

**Viola 4611' (-2623)**

Shale: gray, green, rust red, silty, few pieces pyrite. Sample washes slightly red

Chert: cream to white, vitreous, opaque, sharp and blocky. Sandstone: light tan, fine grained, moderately friable, milky cut, odor when broken.





Chert: more cream than white, vitreous, opaque. Sandstone: light tan to tan, fine grained fair to good friable, increase in amount in sample tray. Odor in fresh, ssfo. Some pale green limestone, dense

Chert: cream, white to off white, mostly vitreous, few pieces weathered, decrease in amount of sandstone, rare piece dark tan dolomite with some visible porosity. Fluorescence when broken, vssfo, faint odor

Shale: flood gray, red, slightly silty

Poor quality sample

Chert: white to off-white, vitreous, opaque, sharp and blocky, some dull fluorescence.

Circulated @ 4680' Chert: mostly white vitreous, poor quality sample, 60" Cherty dolomite: medium brown, fine crystalline, sucrosic, 10% of sample. Faint odor, sto when broken, scattered bright fluorescence

Chert: white to cream, vitreous, very sharp, blocky, good porosity. Minor amount of cream dolomite, very faint odor with vssfo, moderate fluorescence

Cherty dolomite as above

Cherty dolomitic lime: cream to white, fine crystalline, sub-sucrosic, poor visible porosity, NS

Cherty dolomitic lime as above

Poor quality sample

Poor quality sample, sample carries abundant shale

Poor quality sample, sample carries abundant shale

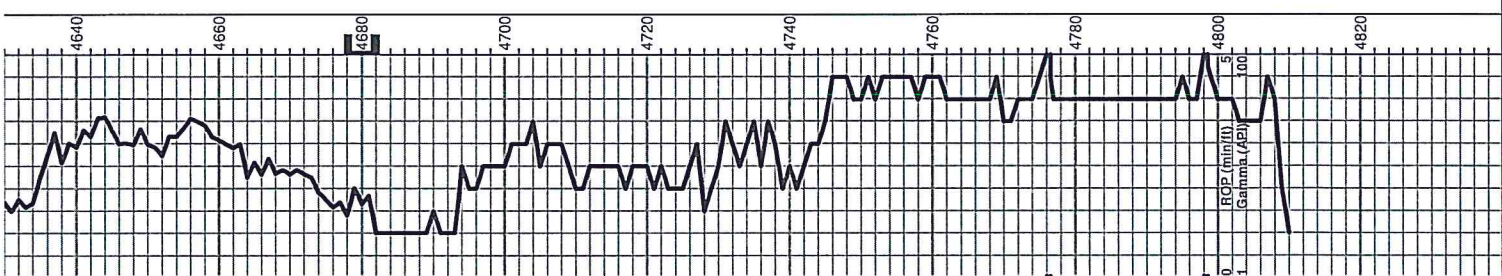
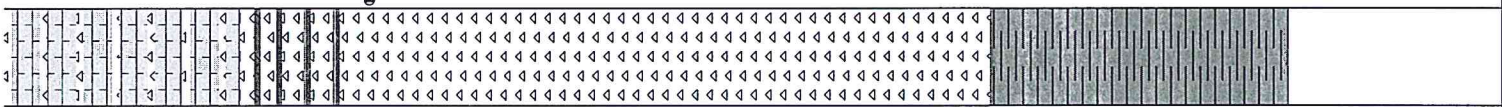
**Simpson 4768' (-2780)**  
Shale: varicolored, mostly rust red, gray

Shales as above

Shale: gray, red, few pieces blue

Shale: gray, red, brown, increase in blue

Circulated at 4810' Shales as above with some sandstone clusters, white, fine grained, moderate porosity, barren



Depth	4810'
Mud Weight	9.3
Funnel Viscosity	75
API Filtrate Chloride	8.8
	4,000