

Robert D. Hendrix

Petroleum Geologist

GEOLOGIST'S REPORT

DRILLING TIME AND SAMPLE LOG

COMPANY **Murfin Drilling Co. Inc.**

LEASE **Banister 'A' #3-22**

FIELD **Willicat**

LOCATION **2310' fs & 330' fw**

SEC **22 TWP 2s RGE 37W**

COUNTY **Cheyenne STATE KS**

CONTRACTOR **Murfin Drilling Co. Inc. Rig #7**

SPUD **5/18/2019 COMP 5/28/2019**

RTD **4950 LTD 4950**

MUD UP **3599 TYPE MUD Chemical**

SAMPLES SAVED FROM **4010 TO TD**

DRILLING TIME KEPT FROM **4010 TO TD**

SAMPLES EXAMINED FROM **4010 TO TD**

GEOLOGICAL SUPERVISION FROM **3940**

GEOLOGIST ON WELL **Robert D. Hendrix**

FORMATION TOPS

ANHYDRITE **3298 (+118)**

TOPEKA **4126 (-710)**

OREAD **4265 (-849)**

LANSING **4340 (-924)**

STARK SHALE **4564 (-1148)**

MOUND CITY **4615 (-1189)**

FT SCOTT **4741 (-1328)**

OKLEY **4818 (-1402)**

ELEVATIONS

KB **3416**

DF

GL **3411**

Measurements Are All From **Kelly Busting**

CASING

CONDUCTOR

SURFACE **8-5/8" at 373'**

PRODUCTION **5 1/2"**

ELECTRICAL SURVEYS

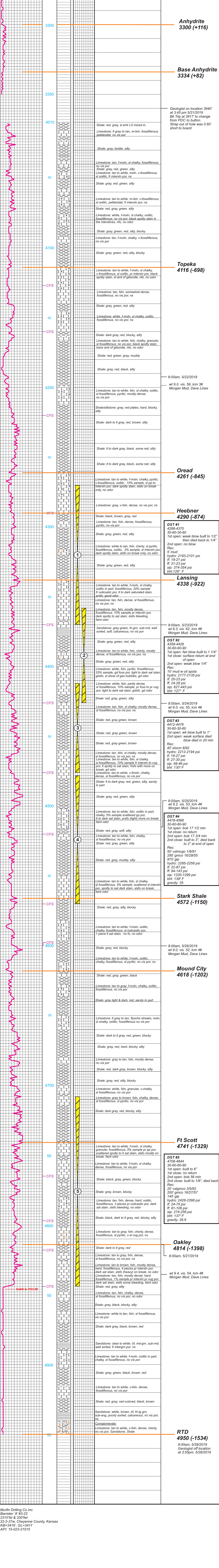
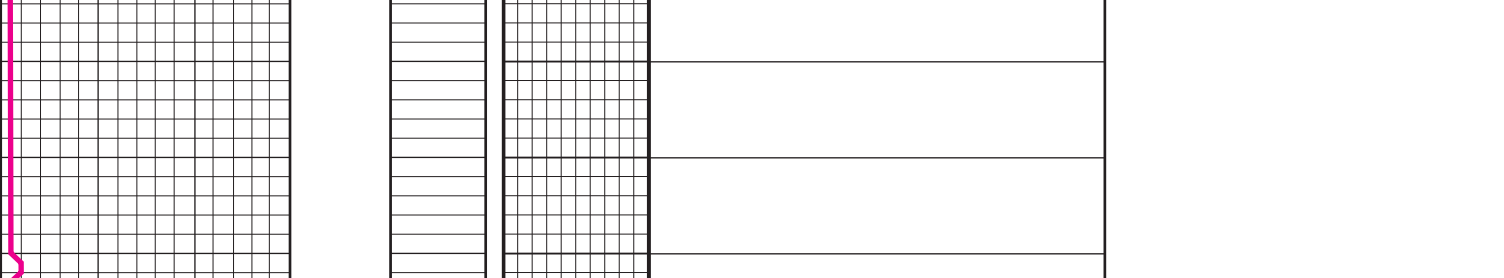
Dial comp pot/ Dual Induction

Spot/Metro Pioneer/Windless Services

REMARKS:

The decision was made to set casing for production purposes.

LEGEND



Murfin Drilling Co Inc
Banister 'A' #3-22
2310'fsl & 330'fwl
22-2-37w, Cheyenne County, Kansas
KB=3416, GL=3411
API: 15-023-21515