

TRILOBITE TESTING, INC.

DRILL STEM TEST REPORT

Vincent Oil Corporation
 200 W. Douglas AVE #725
 Wichita, KS 67202
 ATTN: Ken LeBlanc

5 - 29S. - 22W Ford, KS
Imel - Rotz # 2-5
 Job Ticket: 63298 **DST#: 2**
 Test Start: 2019.05.27 @ 15:52:00

GENERAL INFORMATION:

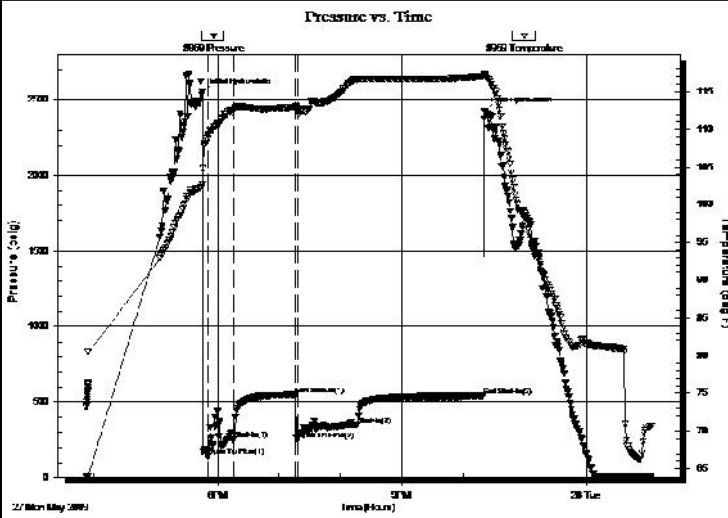
Formation: **Mississippian**
 Deviated: No Whipstock: ft (KB)
 Test Type: Conventional Bottom Hole (Reset)
 Time Tool Opened: 17:50:10
 Tester: Martine Salinas
 Time Test Ended: 01:04:19
 Unit No: 82
 Interval: **5239.00 ft (KB) To 5250.00 ft (KB) (TVD)**
 Reference Elevations: 2516.00 ft (KB)
 Total Depth: 5250.00 ft (KB) (TVD)
 2504.00 ft (CF)
 Hole Diameter: 7.88 inches
 Hole Condition: Good
 KB to GR/CF: 12.00 ft

Serial #: 8959

Inside

Press@RunDepth: 349.42 psig @ 5240.00 ft (KB) Capacity: 8000.00 psig
 Start Date: 2019.05.27 End Date: 2019.05.28 Last Calib.: 2019.05.28
 Start Time: 15:52:01 End Time: 01:04:19 Time On Btm: 2019.05.27 @ 17:45:20
 Time Off Btm: 2019.05.27 @ 22:21:00

TEST COMMENT: 30-IF-1" blow built to B.O.B (11 inche @ 4 1/2 mins (blow increased to 31 1/4")
 60-ISI-No blow back
 60-FF-1/4" blow built to B.O.B (11 inches) @ 15 mins (blow increased to 24 1/2")
 120-FSI-Weak surface blow back @ 15 mins dead @ 1 hour



PRESSURE SUMMARY

Time (Min.)	Pressure (psig)	Temp (deg F)	Annotation
0	2549.87	102.69	Initial Hydro-static
5	140.97	108.71	Open To Flow (1)
31	257.72	112.53	Shut-In(1)
92	550.06	112.89	End Shut-In(1)
93	252.63	112.74	Open To Flow (2)
152	349.42	116.72	Shut-In(2)
275	538.82	117.00	End Shut-In(2)
276	2424.86	117.20	Final Hydro-static

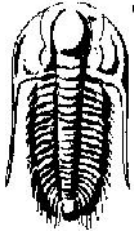
Recovery

Length (ft)	Description	Volume (bbl)
635.00	GOCMW 23%G, 4%O, 36%M, 37%W	8.91
80.00	GSOSM 4%G, 2%O, 94%M	1.12

Gas Rates

	Choke (inches)	Pressure (psig)	Gas Rate (Mcf/d)

* Recovery from multiple tests



**TRILOBITE
TESTING, INC.**

DRILL STEM TEST REPORT

Vincent Oil Corporation
200 W. Douglas AVE #725
Wichita, KS 67202
ATTN: Ken LeBlanc

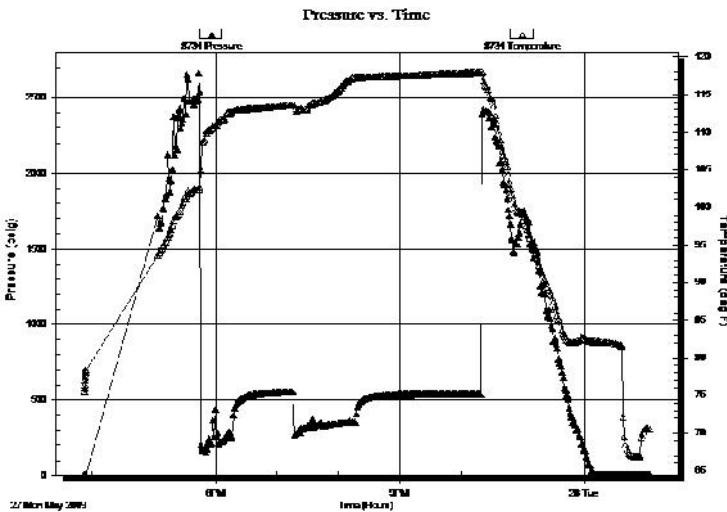
5 - 29S. - 22W Ford, KS
Imel - Rotz # 2-5
Job Ticket: 63298 **DST#: 2**
Test Start: 2019.05.27 @ 15:52:00

GENERAL INFORMATION:

Formation: **Mississippian**
Deviated: No Whipstock: ft (KB)
Time Tool Opened: 17:50:10
Time Test Ended: 01:04:19
Test Type: Conventional Bottom Hole (Reset)
Tester: Martine Salinas
Unit No: 82
Interval: **5239.00 ft (KB) To 5250.00 ft (KB) (TVD)**
Reference Elevations: 2516.00 ft (KB)
Total Depth: 5250.00 ft (KB) (TVD) 2504.00 ft (CF)
Hole Diameter: 7.88 inches Hole Condition: Good KB to GR/CF: 12.00 ft

Serial #: 8734 Outside
Press @ Run Depth: psig @ 5240.00 ft (KB) Capacity: 8000.00 psig
Start Date: 2019.05.27 End Date: 2019.05.28 Last Calib.: 2019.05.28
Start Time: 15:52:01 End Time: 01:04:30 Time On Btm:
Time Off Btm:

TEST COMMENT: 30-IF-1" blow built to B.O.B (11 inche @ 4 1/2 mins (blow increased to 31 1/4")
60-ISI-No blow back
60-FF-1/4" blow built to B.O.B (11 inches) @ 15 mins (blow increased to 24 1/2")
120-FSI-Weak surface blow back @ 15 mins dead @ 1 hour



PRESSURE SUMMARY

Time (Min.)	Pressure (psig)	Temp (deg F)	Annotation

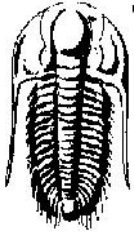
Recovery

Length (ft)	Description	Volume (bbl)
635.00	GOCMW 23%G, 4%O, 36%M, 37%W	8.91
80.00	GSOSM 4%G, 2%O, 94%M	1.12

Gas Rates

	Choke (inches)	Pressure (psig)	Gas Rate (Mcf/d)

* Recovery from multiple tests



**TRILOBITE
TESTING, INC.**

DRILL STEM TEST REPORT

FLUID SUMMARY

Vincent Oil Corporation

5 - 29S. - 22W Ford, KS

200 W. Douglas AVE #725
Wichita, KS 67202

Imel - Rotz # 2-5

Job Ticket: 63298

DST#: 2

ATTN: Ken LeBlanc

Test Start: 2019.05.27 @ 15:52:00

Mud and Cushion Information

Mud Type: Gel Chem

Cushion Type:

Oil API:

deg API

Mud Weight: 9.00 lb/gal

Cushion Length:

ft

Water Salinity:

35000 ppm

Viscosity: 48.00 sec/qt

Cushion Volume:

bbbl

Water Loss: 9.99 in³

Gas Cushion Type:

Resistivity: ohm.m

Gas Cushion Pressure:

psig

Salinity: 6900.00 ppm

Filter Cake: 1.00 inches

Recovery Information

Recovery Table

Length ft	Description	Volume bbl
635.00	GOCMW 23%G, 4%O, 36%M, 37%W	8.907
80.00	GSOSM 4%G, 2%O, 94%M	1.122

Total Length: 715.00 ft Total Volume: 10.029 bbl

Num Fluid Samples: 0

Num Gas Bombs: 0

Serial #:

Laboratory Name:

Laboratory Location:

Recovery Comments: RW= .210 @ 70.5 degs = 35,000 PPM

IF - Severe Plugging

FF- had moderate plugging

Serial #: 8959

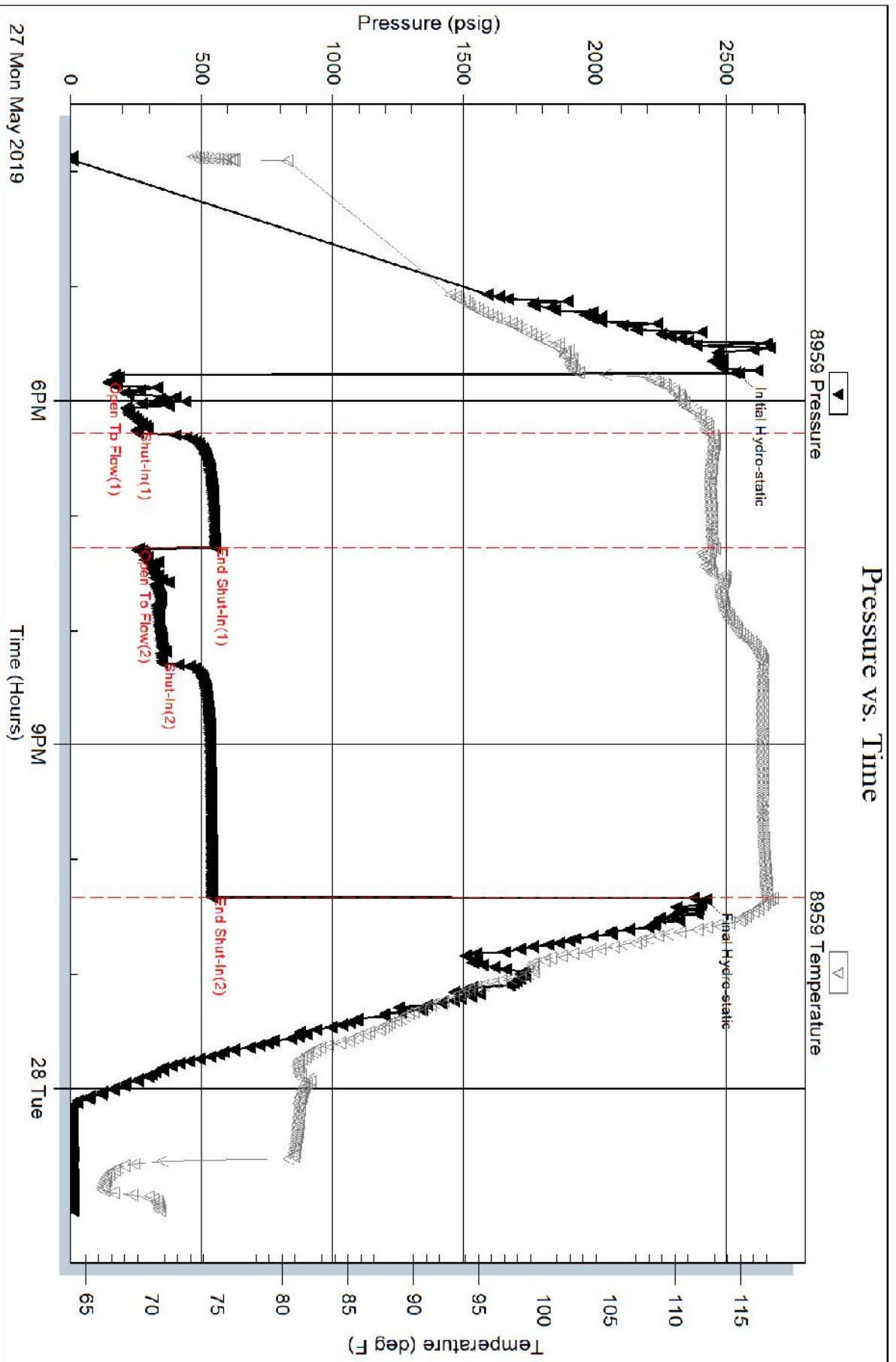
Inside

Vincent Oil Corporation

Inlet - Rotz # 2-5

DST Test Number: 2

Pressure vs. Time



Trilobite Testing, Inc

Ref. No: 632298

Printed: 2019.05.28 @ 06:43:46

Serial #: 8734

Outside Vincent Oil Corporation

Inlet - Rotz # 2-5

DST Test Number: 2

