



GEOLOGIST'S REPORT

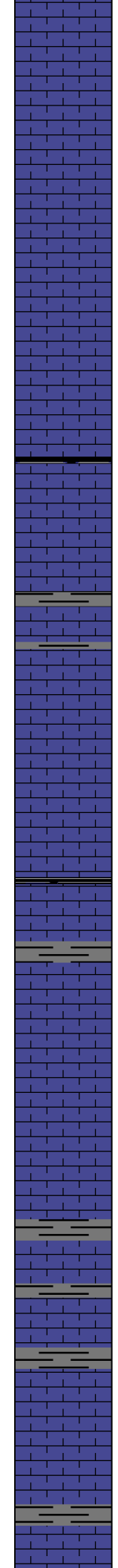
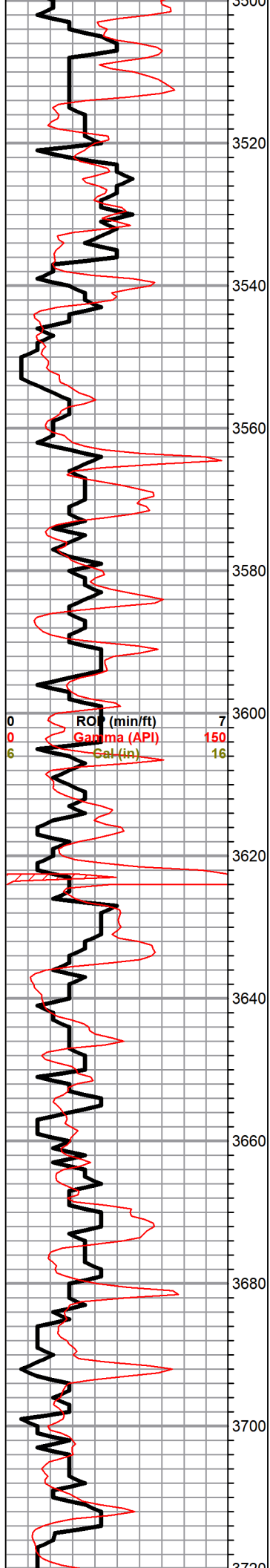
DRILLING TIME AND SAMPLE LOG

COMPANY <u>US Oil Resources, LLC</u> LEASE <u>Bentley 16C-34-1527</u> FIELD _____ LOCATION <u>C-SW-SE-SE</u> (330' FSL & 990' FEL) SEC <u>34</u> TWSP <u>15s</u> RGE <u>27W</u> COUNTY <u>Gove</u> STATE <u>Kansas</u>	ELEVATIONS KB <u>2557'</u> DF _____ GL <u>2549'</u> Measurements Are All From <u>KB</u>
CONTRACTOR <u>Duke Drilling Co. (rig # 2)</u> SPUD <u>8/16/2019</u> COMP <u>08/26/2019</u> RTD <u>4475'</u> LTD <u>4474'</u> MUD UP <u>3350'</u> TYPE MUD <u>Chemical</u>	CASING SURFACE <u>8 5/8"@212'</u> PRODUCTION <u>none</u> ELECTRICAL SURVEYS By Halliburton

SAMPLES SAVED FROM _____ 3400' TO _____ RTD
 DRILLING TIME KEPT FROM _____ 3400' TO _____ RTD
 SAMPLES EXAMINED FROM _____ 3400' TO _____ RTD
 GEOLOGICAL SUPERVISION FROM _____ 3400' TO _____ RTD
 GEOLOGIST ON WELL Jim Musgrove

FORMATION TOPS	LOG	SAMPLES
Anhydrite	1971 (+586)	
B. Anhydrite	2008 (+549)	
Heebner	3751 (-1194)	
Toronto	3770 (-1213)	
Lansing	3788 (-1231)	
Muncie Creek Sh.	3953 (-1396)	
BKC	4101 (-1544)	

	34		



LS, tan, fxl, few cherty, dense

LS, tan, slightly cherty in pt (dense)

LS, tan, highly foss, few sub oom, fair good porosity

LS, tan, highly foss, poorly developed , no shows

Sh, black carb

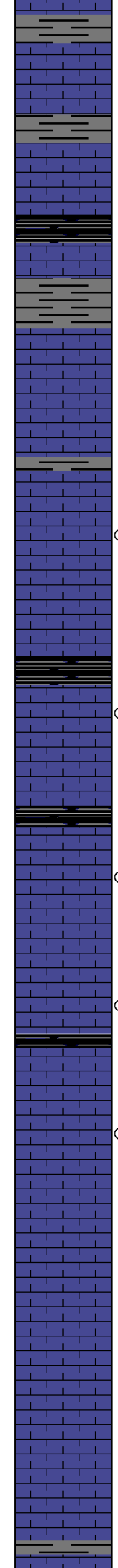
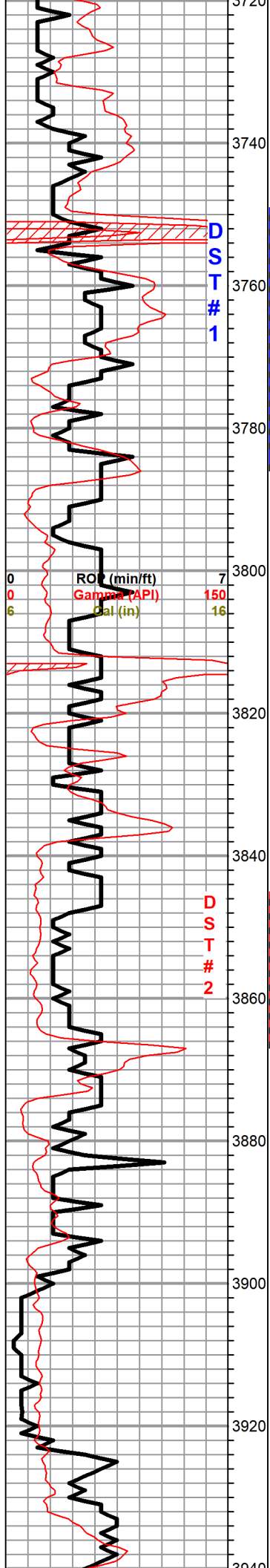
LS, white, tan, fxl, gran, few chalky -->cherty, + tr. tan chertt

LS, highly foss, ool, sparry calcite cementn poor vis. porosity, no shows

LS, a/a, + white chalk

LS, tan, gry, fxl, highly foss, gran in pt, foss. cast type porosity, no shows

0	Total Gas (Units)	100
0	C1 (units)	100
0	C2 (units)	100
0	C3 (units)	100
0	C4 (units)	100



LS, white to brn, fxl, foss chalky, gran. scattered porosity,

Heebner 3752.0 (-1193.0)

Sh, black carb

Toronto 3771.0 (-1212.0)

LS, white, cream, fxl, foss in pt, slightly chalk fair to fine

Lansing 3791.0 (-1234.0)

LS, cream, white, fxl, foss in pt, slightly chalky, fair - fine vuggy p.p. por. fair stain & sat., sfo, ??? odor

LS, white, cream, ool, slightly chalky, poor porosity, tr. spotty brn stain, sfo, no odor + white chert / amber opaque cherts

LS, tan, foss, cherty in part, poorly developed, dk brn stain, nsfo, no odor

LS, white, cream, ool, foss, sparry calcite, poor vis. porosity, + white chalk

LS, white, cream, fxl, scattered fine vuggy p.p. type porosity, brn stain, sat, sfo, ft. odor (chalky)

LS, brn ool, oom, fair porosity, (no shows)

LS, a/a

LS, tan, white, fxl, chalky, dense,

DST#1 3750-3786

30-45-45-60

1st Open:

3" (weak)

2nd Open:

Same : 3" Weak

Recovery:

5' Clean Oil

6' SOWCM

(2%oil, 28%W, 70%M)

Pressures:

ISIP 991 psi

FSIP 979 psi

IFP 24-35 psi

FFP 41-56 psi

HSH 1891-1820 psi

DST #2 3844-3866

30-10-X-X

1st. Open:

Blow Weak

Rec. 7' mud (w/ oil

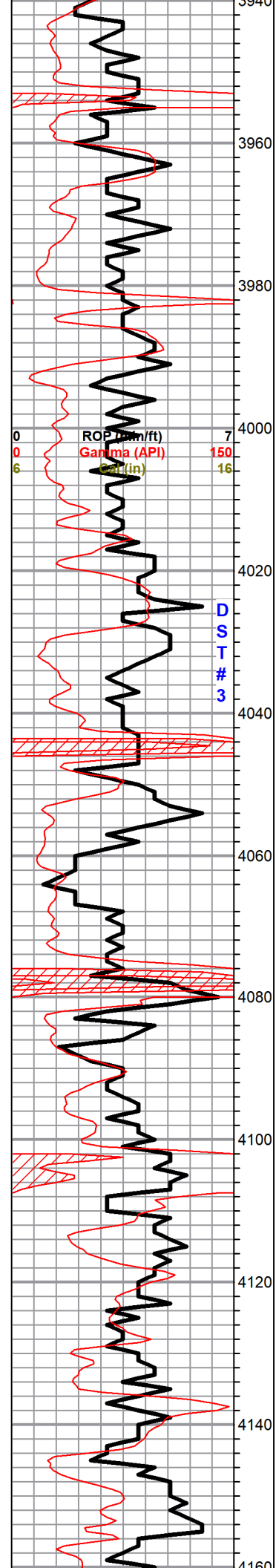
spts)

Pressures:

ISIP 914

IFP X

HSH 1891-1820



Munice Creek Sh. 3951.0 (-1394.0)

LS, tan, sub oom fair porosity no shows

Tr. blk carb sh.

LS, white, cream, tan, fxl, sl. ool, chalky, scattered inxln pp porosity. (poor) tr. brn stain, tr. fo, no odor

Tr. white, chert

LS, white/ cream, chalky, dense

LS, white, gry, ool, chalky, poor vis. porosity, tr. spty brn stain, tr. fo, no odor

Stark Sh. 4047.0 (-1490.0)

LS, white, tan, fxl, slightly dolomitic, few suc. poor -fair inxln p.p. porosity,

Hushpuckneyh Sh. 4074.0 (-1519.0)

Black carb Sh

LS, white, gry, fxl, few foss, chalky, --> cherty, poor vis. porosity, tr. blk stain, nsfo, ??? odor

BKC 4108.0 (-1551.0)

Slug black carb sh

Marmaton 4129.0 (-1573.0)

LS, white, gry, chalky, dense, + white gry chert

LS, white, chalky, poorly dev. porosity, tr. blk s[pty dead stain, nsfo, no odor

0	Total Gas (units)	100
0	C1 (units)	100
0	C2 (units)	100
0	C3 (units)	100
0	C4 (units)	100

DST # 3 4043-4076

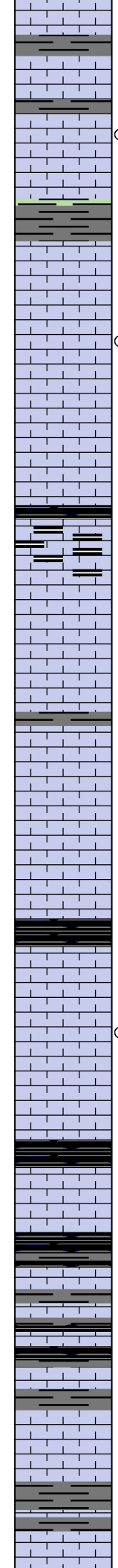
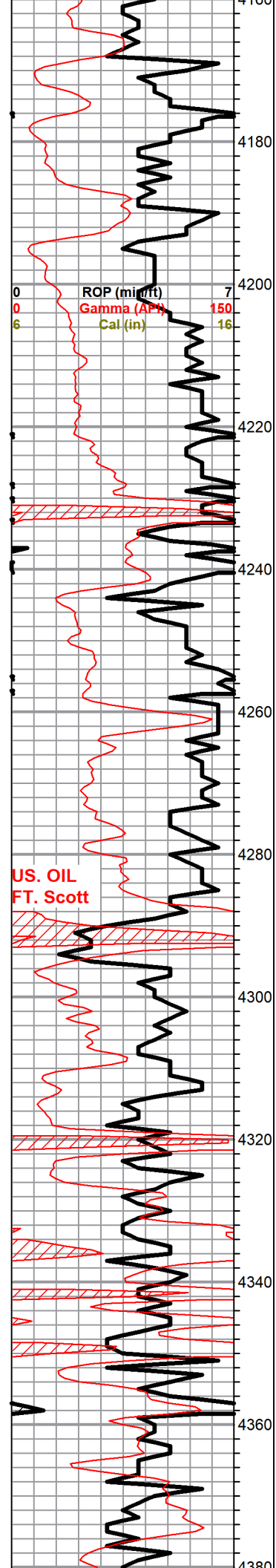
30-45-45-60

1st Open:
Weak blow(1 1/4")

2nd Open: Weak (1/2")

Recovery:
20' oil spotted muddy water

Pressures:
ISIP 633 psi
FSIP 629 psi
IFP 231-24 psi
FFP 23-33 psi
HSH 2016-1951 psi



LS gry, tan, chalky, cherty (dense) poor porosity

LS, white, cream, highly chalky, tr. white, f- med xln , tr. blk stain , nsfo, no odor

Sh, gry, green

Pawnee 4196.0 (-1639.0)

LS, white, gry, fxl, few med xln , chalky, gry-blk stan, nsfo , no odor

LS, white, gry, fxl, few gran. chalky, + gry, tan, cherts

LS, gry, dk gry, shaley in part

Myrick Station 4247.0 (-1690.0)

LS, white, tan, gry, slightly cherty, chalky, (dense)

LS, tan, gry, fxl, few foss, pool, in pt, dense

Ft. Scott " US OIL " 4289.0 (-1732.0)

Sh, black carb

Ft. Scott 4295.0 (-1738.0)

LS, tan, fxl, foss, poor vis. porosity, poor vis. porosity, blk stain ,nsfo, no odor

Cherokee Sh. 4320.0 (-1763.0)

Sh black carb

LS, a/a , dense

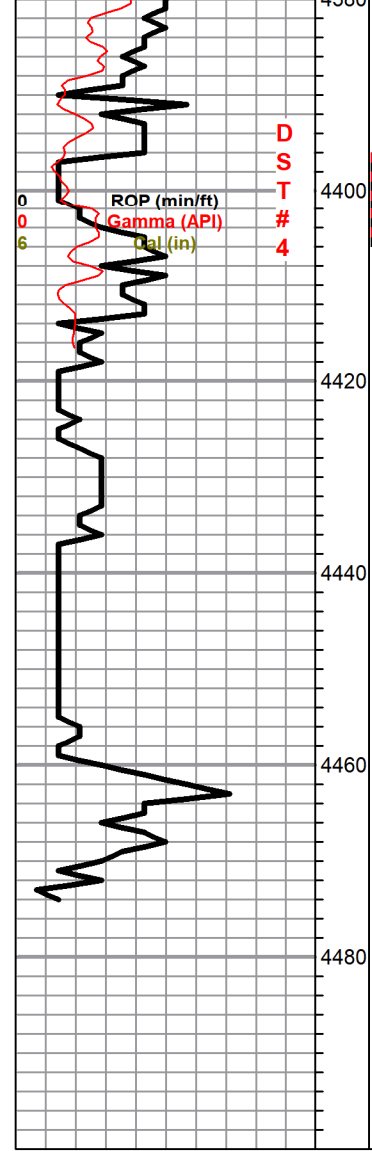
LS, white, gry, chalky, poor vis. porosity, no shows.

Sh, blk / brn shale

LS, white, gry, chalky, few foss, poor vis. porosity, no shows

LS, white, yellow, tan, chalky, tr. orange chert

0	Total Gas (units)	100
0	C1 (units)	100
0	C2 (units)	100
0	C3 (units)	100
0	C4 (units)	100



Miss. 4381.0 (-1824.0)

LS, white, cream, fxl, few dolomitic no shows, + white, cherty

Miss Warsaw 4392.0 (-1835.0)

Dol, gry, tan, fxl, suc. few foss, f. vuggy type porosity, brn to blk stain, fr sfo, odor / glauc.

Miss Osage 4414.0 (-1857.0)

Dol. , white fxl, suc. in pt, + white/ boney cherty & sub rhombic frosted qtz grains

Dol. a/a . + gry smokey quartz gry, foss opaque chert

Dol a/a + white/ cream, fxl, suc. slightly cherty sub rounded qtz grains

Lower Osage 4461.0 (-1904.0)

LS, tan, fxl, slightly dolomitic + tan, ool, chalky, LS, no shows

Dol, tan, fxl, suc. white, cream, boney opaque chert

RTD 4475.0 (-1918.0)

DST#4 4395-4405

45-45-20-X

1st Open :
Blow, Weak

Rec.
10' mud; oil spts,

Pressures:
ISIP 1194 psi
FSIP 545 psi
IFP 17-19 psi
FFP 20-21 psi
HSH 2194-2184 psi

