

KEVIN L. KESSLER

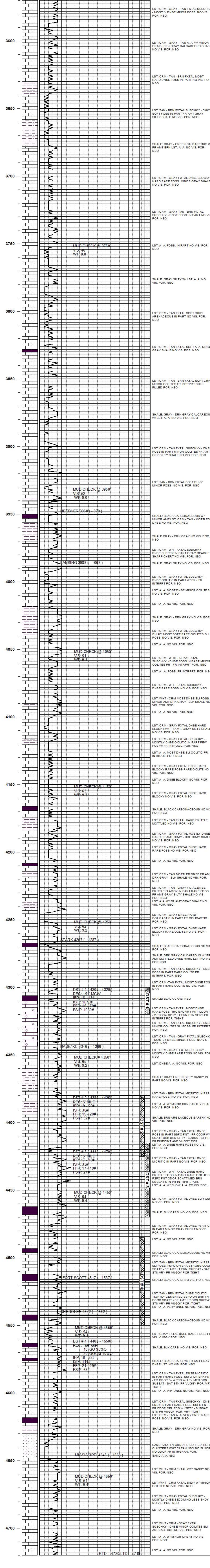
CONSULTING PETROLEUM GEOLOGIST

(316) 522 - 7338

OPERATOR : ABERCROMBIE ENERGY, LLC			ELEVATION	
LEASE : FOUSER		WELL # : 1 - 23		KB: 2980'
LOCATION : 830' FWL & 1390' FNL				
SEC : 23		TWP : 16 S		RGE : 32 W
COUNTY : SCOTT		STATE : KANSAS		
CONTRACTOR: STP DRILLING RIG # 1			CASING RECORD:	
COMM: 08 - 20 - 2019		COMP: 08 - 30 - 2019		SURFACE:
RTD: 4720'		LTD: 4719'		8 5/8" @ 266'
GEOLOGICAL SUPERVISION FROM: 3500'			PRODUCTION:	
SAMPLES SAVED FROM: 3500'			NONE	
MEASUREMENTS FROM:			KB	

FORMATION:	TOP	LOG DATUM	SAMPLE TOP	DATUM	COMP.	ELECTRICAL SURVEYS:
HEEBNER	3950	- 970	3950	- 970	- 04	DIL
LANSING	3988	- 1008	3988	- 1008	+ 02	CNL/CDL
STARK	4267	- 1287	4267	- 1287	+ 03	MICRO
BASE/ KC	4346	- 1366	4346	- 1366	+ 05	SONIC
FORT SCOTT	4517	- 1537	4517	- 1537	+ 10	
CHEROKEE	4542	- 1562	4542	- 1562	+ 10	
MISSISSIPPI	4648	- 1668	4648	- 1668	+ 27	

REFERENCE WELL FOR STRUCTURAL COMPARISON:
GAMAR OIL INC. # 1 CONINE 23-16S-32W SCOTT CO KS



COMMENTS :
DUE TO NEGATIVE DST RESULTS THIS WELL WAS PLUGGED AND ABANDONED