



DRILL STEM TEST REPORT

Prepared For: **Abercrombie Energy LLC**

10209 W Central Ste 2
Wichita, KS 67212

ATTN: Kevin Kessler

Fouser #1-23

23-16s-32w Scott,KS

Start Date: 2019.08.26 @ 11:12:57

End Date: 2019.08.26 @ 19:22:57

Job Ticket #: 65249 DST #: 1

Trilobite Testing, Inc
1515 Commerce Parkway Hays, KS 67601
ph: 785-625-4778 fax: 785-625-5620

Printed: 2019.08.30 @ 08:47:49



TRILOBITE TESTING, INC.

DRILL STEM TEST REPORT

Abercrombie Energy LLC

23-16s-32w Scott,KS

10209 W Central Ste 2
Wichita, KS 67212

Fouser #1-23

Job Ticket: 65249

DST#: 1

ATTN: Kevin Kessler

Test Start: 2019.08.26 @ 11:12:57

GENERAL INFORMATION:

Formation: **Lansing L Middle Cre**

Deviated: No Whipstock: ft (KB)

Time Tool Opened: 13:24:27

Time Test Ended: 19:22:57

Test Type: Conventional Bottom Hole (Initial)

Tester: Brandon Turley

Unit No: 79

Interval: 4300.00 ft (KB) To 4320.00 ft (KB) (TVD)

Reference Elevations: 2980.00 ft (KB)

Total Depth: 4320.00 ft (KB) (TVD)

2973.00 ft (CF)

Hole Diameter: 7.88 inches Hole Condition: Good

KB to GR/CF: 7.00 ft

Serial #: 8166 Outside

Press@RunDepth: 79.89 psig @ 4301.00 ft (KB)

Capacity: 8000.00 psig

Start Date: 2019.08.26

End Date: 2019.08.26

Last Calib.: 2019.08.26

Start Time: 11:13:02

End Time: 19:22:56

Time On Btm: 2019.08.26 @ 13:23:57

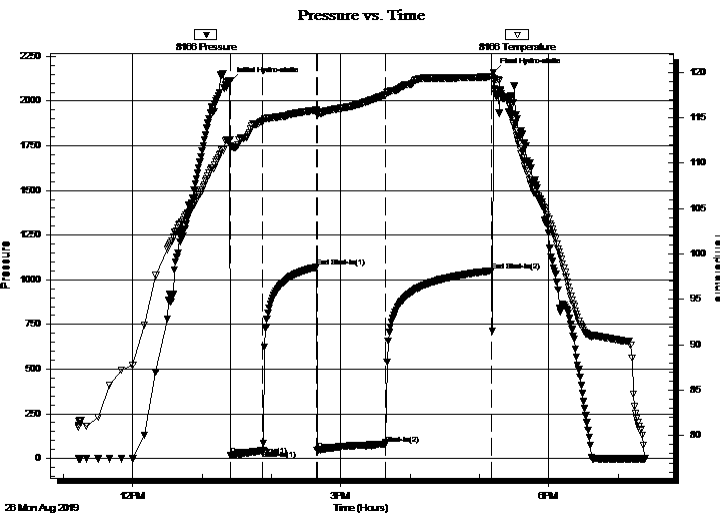
Time Off Btm: 2019.08.26 @ 17:11:57

TEST COMMENT: IF: 1/4" blow built to 2 1/2.

IS: No return.

FF: 1/4" blow built to 3"

FS: No return.



PRESSURE SUMMARY

Time (Min.)	Pressure (psig)	Temp (deg F)	Annotation
0	2108.17	112.58	Initial Hydro-static
1	16.21	111.93	Open To Flow (1)
29	43.35	114.62	Shut-In(1)
75	1070.13	115.83	End Shut-In(1)
76	46.09	115.33	Open To Flow (2)
135	79.89	117.51	Shut-In(2)
227	1050.11	119.54	End Shut-In(2)
228	2160.46	119.99	Final Hydro-static

Recovery

Length (ft)	Description	Volume (bbl)
30.00	wcm 40%w 60%m	0.15
121.00	mcw 90%w 10%m	0.87

Gas Rates

	Choke (inches)	Pressure (psig)	Gas Rate (Mcf/d)



**TRILOBITE
TESTING, INC.**

DRILL STEM TEST REPORT

TOOL DIAGRAM

Abercrombie Energy LLC

23-16s-32w Scott, KS

10209 W Central Ste 2
Wichita, KS 67212

Fouser #1-23

Job Ticket: 65249

DST#: 1

ATTN: Kevin Kessler

Test Start: 2019.08.26 @ 11:12:57

Tool Information

Drill Pipe:	Length: 4170.00 ft	Diameter: 3.80 inches	Volume: 58.49 bbl	Tool Weight:	2000.00 lb
Heavy Wt. Pipe:	Length: 0.00 ft	Diameter: 0.00 inches	Volume: 0.00 bbl	Weight set on Packer:	30000.00 lb
Drill Collar:	Length: 121.00 ft	Diameter: 2.25 inches	Volume: 0.60 bbl	Weight to Pull Loose:	70000.00 lb
			<u>Total Volume: 59.09 bbl</u>	Tool Chased	0.00 ft
Drill Pipe Above KB:	18.00 ft			String Weight: Initial	62000.00 lb
Depth to Top Packer:	4300.00 ft			Final	63000.00 lb
Depth to Bottom Packer:	ft				
Interval between Packers:	20.00 ft				
Tool Length:	47.00 ft				
Number of Packers:	2	Diameter: 6.75 inches			

Tool Comments:

Tool Description	Length (ft)	Serial No.	Position	Depth (ft)	Accum. Lengths
------------------	-------------	------------	----------	------------	----------------

Stubb	1.00			4274.00	
Shut In Tool	5.00			4279.00	
Hydraulic tool	5.00			4284.00	
Jars	5.00			4289.00	
Safety Joint	2.00			4291.00	
Packer	5.00			4296.00	27.00 Bottom Of Top Packer
Packer	4.00			4300.00	
Stubb	1.00			4301.00	
Recorder	0.00	6651	Inside	4301.00	
Recorder	0.00	8166	Outside	4301.00	
Perforations	14.00			4315.00	
Bullnose	5.00			4320.00	20.00 Bottom Packers & Anchor

Total Tool Length: 47.00



**TRILOBITE
TESTING, INC.**

DRILL STEM TEST REPORT

FLUID SUMMARY

Abercrombie Energy LLC

23-16s-32w Scott,KS

10209 W Central Ste 2
Wichita, KS 67212

Fouser #1-23

Job Ticket: 65249

DST#: 1

ATTN: Kevin Kessler

Test Start: 2019.08.26 @ 11:12:57

Mud and Cushion Information

Mud Type: Gel Chem

Cushion Type:

Oil API:

0 deg API

Mud Weight: 9.00 lb/gal

Cushion Length:

ft

Water Salinity:

25000 ppm

Viscosity: 59.00 sec/qt

Cushion Volume:

bbbl

Water Loss: 6.39 in³

Gas Cushion Type:

Resistivity: 0.00 ohm.m

Gas Cushion Pressure:

psig

Salinity: 2000.00 ppm

Filter Cake: 1.00 inches

Recovery Information

Recovery Table

Length ft	Description	Volume bbbl
30.00	w cm 40%w 60%m	0.148
121.00	mcw 90%w 10%m	0.868

Total Length: 151.00 ft Total Volume: 1.016 bbl

Num Fluid Samples: 0

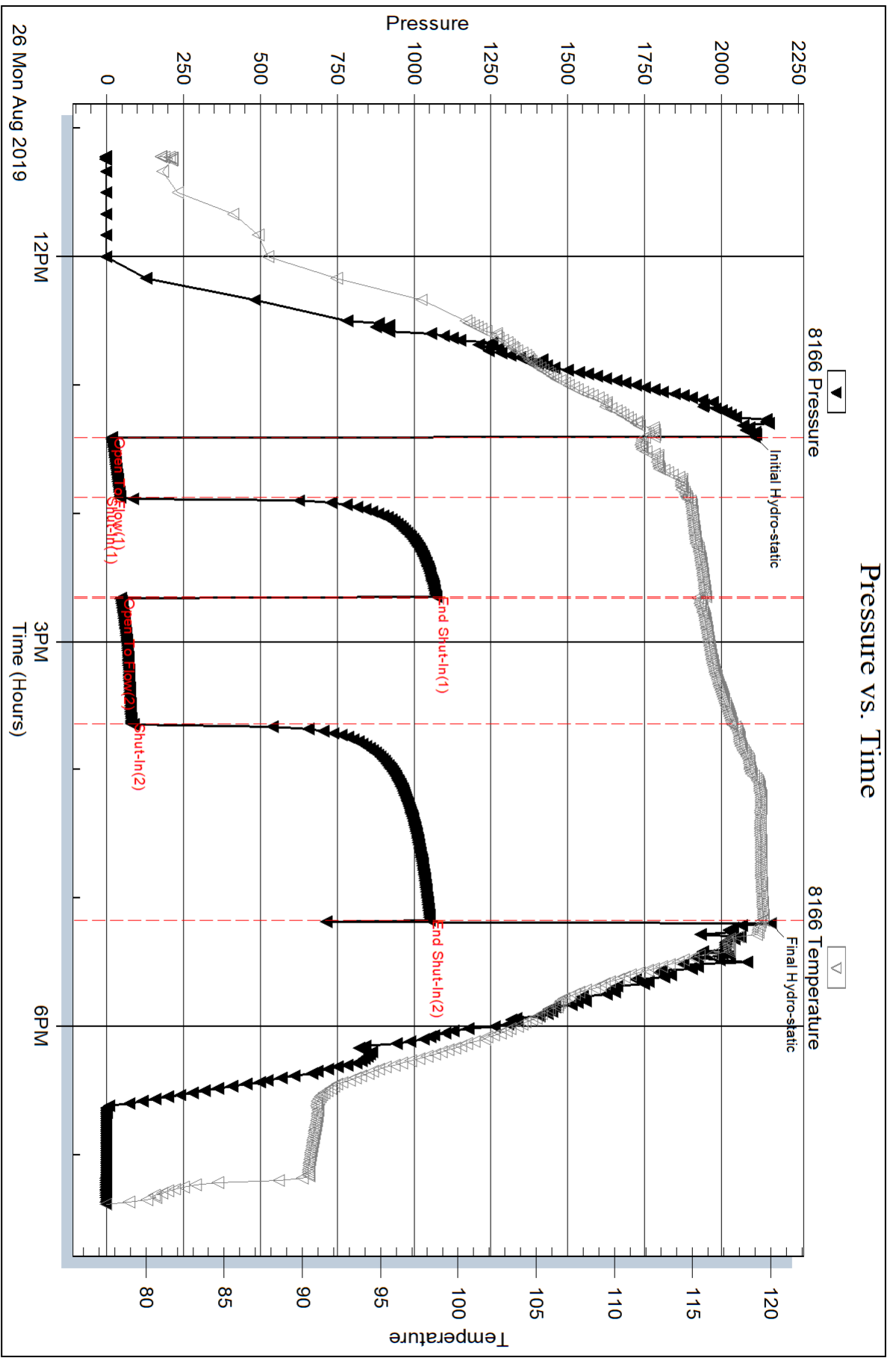
Num Gas Bombs: 0

Serial #:

Laboratory Name:

Laboratory Location:

Recovery Comments: .23@84=25000





DRILL STEM TEST REPORT

Prepared For: **Abercrombie Energy LLC**

10209 W Central Ste 2
Wichita, KS 67212

ATTN: Kevin Kessler

Fouser #1-23

23-16s-32w Scott,KS

Start Date: 2019.08.27 @ 10:41:12

End Date: 2019.08.27 @ 16:45:42

Job Ticket #: 65250 DST #: 2

Trilobite Testing, Inc
1515 Commerce Parkway Hays, KS 67601
ph: 785-625-4778 fax: 785-625-5620

Printed: 2019.08.30 @ 08:47:26



TRILOBITE TESTING, INC.

DRILL STEM TEST REPORT

Abercrombie Energy LLC

23-16s-32w Scott,KS

10209 W Central Ste 2
Wichita, KS 67212

Fouser #1-23

Job Ticket: 65250

DST#: 2

ATTN: Kevin Kessler

Test Start: 2019.08.27 @ 10:41:12

GENERAL INFORMATION:

Formation: **Marmaton**

Deviated: No Whipstock: ft (KB)

Time Tool Opened: 12:43:12

Time Test Ended: 16:45:42

Test Type: Conventional Bottom Hole (Reset)

Tester: Brandon Turley

Unit No: 79

Interval: 4380.00 ft (KB) To 4425.00 ft (KB) (TVD)

Reference Elevations: 2980.00 ft (KB)

Total Depth: 4425.00 ft (KB) (TVD)

2973.00 ft (CF)

Hole Diameter: 7.88 inches Hole Condition: Good

KB to GR/CF: 7.00 ft

Serial #: 8166 Outside

Press@RunDepth: 20.61 psig @ 4381.00 ft (KB)

Capacity: 8000.00 psig

Start Date: 2019.08.27 End Date: 2019.08.27

Last Calib.: 2019.08.27

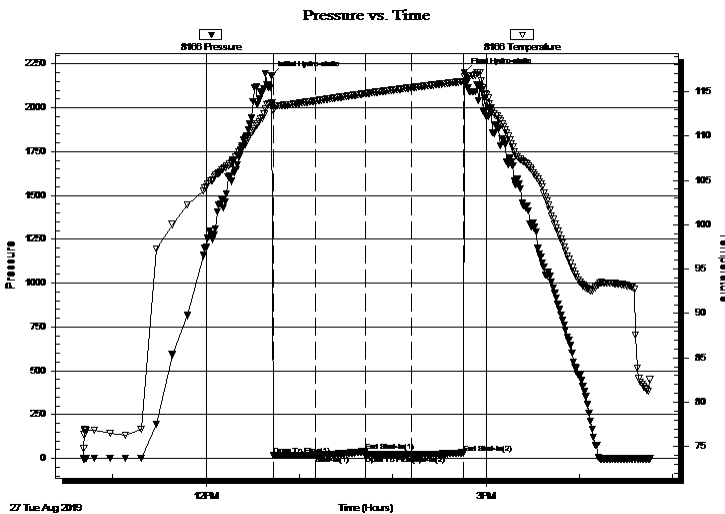
Start Time: 10:41:17 End Time: 16:45:41

Time On Btm: 2019.08.27 @ 12:42:12

Time Off Btm: 2019.08.27 @ 14:46:12

TEST COMMENT: IF: 1/4" blow built to 1/2" died to a 1/4"
IS: No return.
FF: No blow.
FS: No return.

PRESSURE SUMMARY



Time (Min.)	Pressure (psig)	Temp (deg F)	Annotation
0	2184.03	113.79	Initial Hydro-static
1	19.36	112.84	Open To Flow (1)
28	20.16	113.96	Shut-In(1)
60	38.96	114.76	End Shut-In(1)
61	19.50	114.77	Open To Flow (2)
90	20.61	115.45	Shut-In(2)
123	32.04	116.14	End Shut-In(2)
124	2201.82	116.70	Final Hydro-static

Recovery

Length (ft)	Description	Volume (bbl)
5.00	mud 100% m	0.02

* Recovery from multiple tests

Gas Rates

Choke (inches)	Pressure (psig)	Gas Rate (Mcf/d)



**TRILOBITE
TESTING, INC.**

DRILL STEM TEST REPORT

TOOL DIAGRAM

Abercrombie Energy LLC

23-16s-32w Scott, KS

10209 W Central Ste 2
Wichita, KS 67212

Fouser #1-23

Job Ticket: 65250

DST#: 2

ATTN: Kevin Kessler

Test Start: 2019.08.27 @ 10:41:12

Tool Information

Drill Pipe:	Length: 4264.00 ft	Diameter: 3.80 inches	Volume: 59.81 bbl	Tool Weight: 2000.00 lb
Heavy Wt. Pipe:	Length: 0.00 ft	Diameter: 0.00 inches	Volume: 0.00 bbl	Weight set on Packer: 30000.00 lb
Drill Collar:	Length: 121.00 ft	Diameter: 2.25 inches	Volume: 0.60 bbl	Weight to Pull Loose: 85000.00 lb
			<u>Total Volume: 60.41 bbl</u>	Tool Chased 0.00 ft
Drill Pipe Above KB:	32.00 ft			String Weight: Initial 63000.00 lb
Depth to Top Packer:	4380.00 ft			Final 63000.00 lb
Depth to Bottom Packer:	ft			
Interval between Packers:	45.00 ft			
Tool Length:	72.00 ft			
Number of Packers:	2	Diameter: 6.75 inches		

Tool Comments:

Tool Description	Length (ft)	Serial No.	Position	Depth (ft)	Accum. Lengths
------------------	-------------	------------	----------	------------	----------------

Stubb	1.00			4354.00	
Shut In Tool	5.00			4359.00	
Hydraulic tool	5.00			4364.00	
Jars	5.00			4369.00	
Safety Joint	2.00			4371.00	
Packer	5.00			4376.00	27.00 Bottom Of Top Packer
Packer	4.00			4380.00	
Stubb	1.00			4381.00	
Recorder	0.00	6651	Inside	4381.00	
Recorder	0.00	8166	Outside	4381.00	
Perforations	5.00			4386.00	
Change Over Sub	1.00			4387.00	
Drill Pipe	32.00			4419.00	
Change Over Sub	1.00			4420.00	
Bullnose	5.00			4425.00	45.00 Bottom Packers & Anchor

Total Tool Length: 72.00



**TRILOBITE
TESTING, INC.**

DRILL STEM TEST REPORT

FLUID SUMMARY

Abercrombie Energy LLC

23-16s-32w Scott,KS

10209 W Central Ste 2
Wichita, KS 67212

Fouser #1-23

Job Ticket: 65250

DST#: 2

ATTN: Kevin Kessler

Test Start: 2019.08.27 @ 10:41:12

Mud and Cushion Information

Mud Type: Gel Chem

Cushion Type:

Oil API:

0 deg API

Mud Weight: 9.00 lb/gal

Cushion Length:

ft

Water Salinity:

0 ppm

Viscosity: 52.00 sec/qt

Cushion Volume:

bbbl

Water Loss: 7.19 in³

Gas Cushion Type:

Resistivity: 0.00 ohm.m

Gas Cushion Pressure:

psig

Salinity: 3300.00 ppm

Filter Cake: 1.00 inches

Recovery Information

Recovery Table

Length ft	Description	Volume bbl
5.00	mud 100%m	0.025

Total Length: 5.00 ft Total Volume: 0.025 bbl

Num Fluid Samples: 0

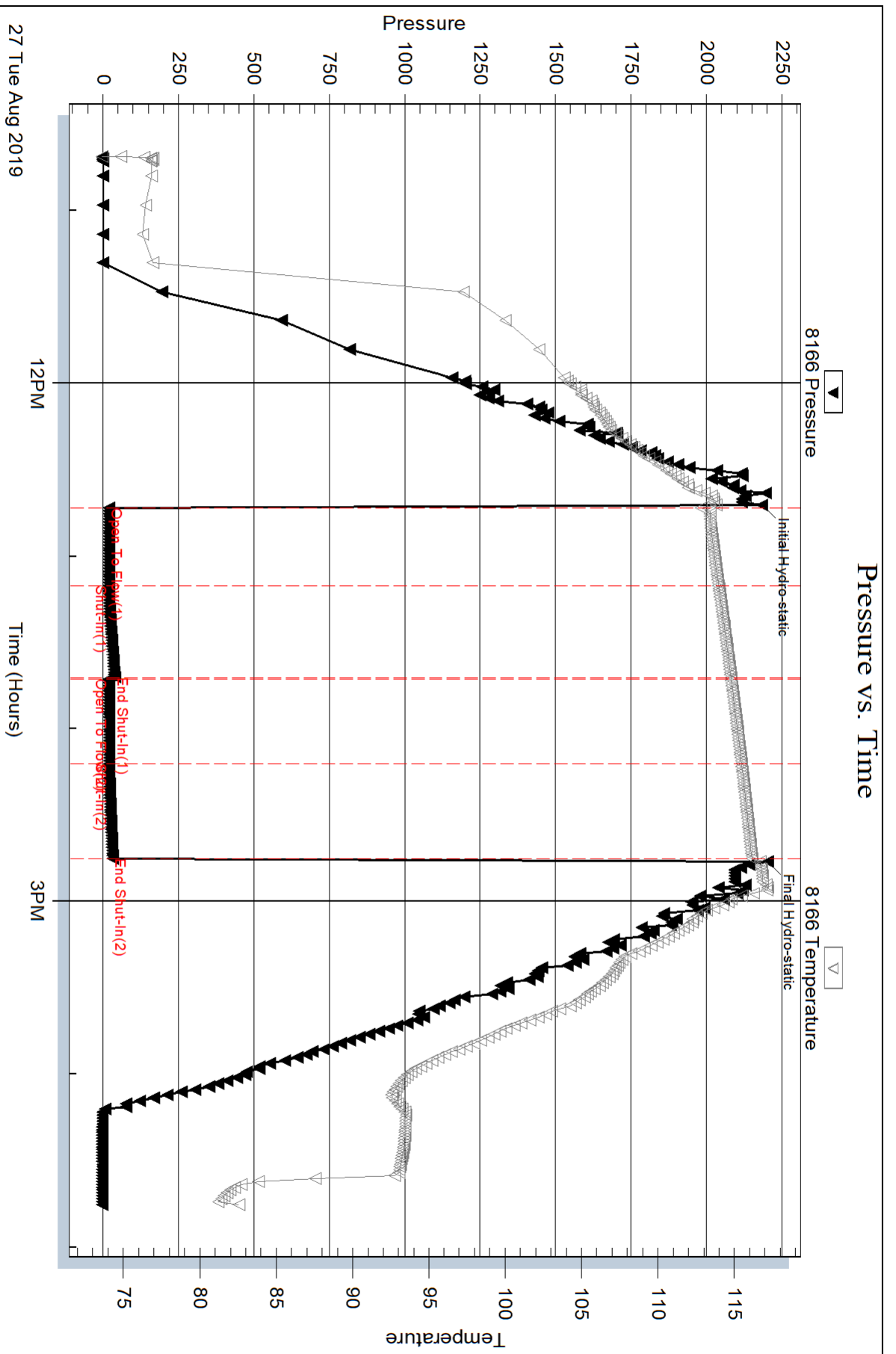
Num Gas Bombs: 0

Serial #:

Laboratory Name:

Laboratory Location:

Recovery Comments:



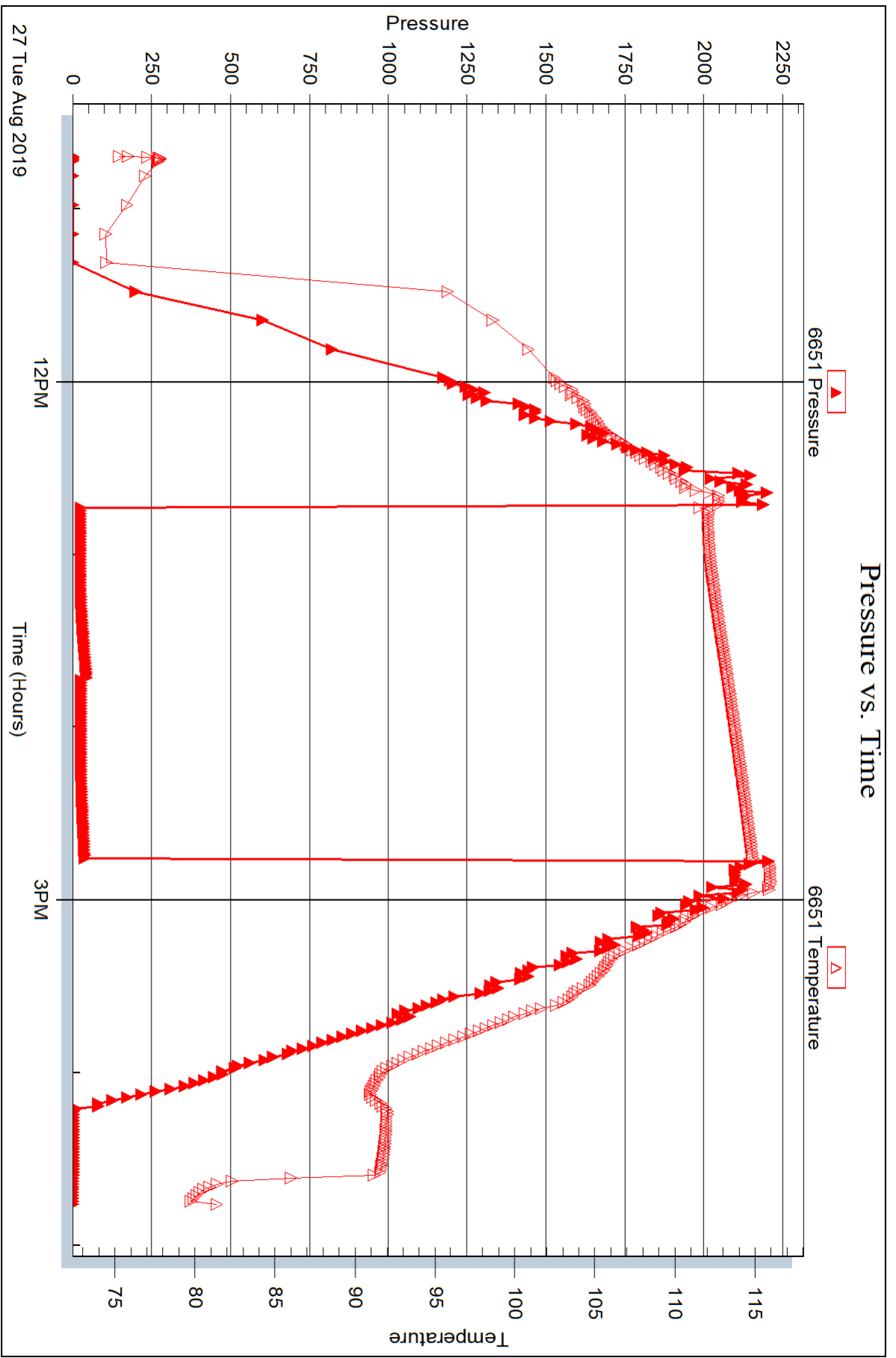
Serial #: 6651

Inside

Abercrombie Energy LLC

Fouser #1-23

DST Test Number: 2



Triobite Testing, Inc

Ref. No: 65250

Printed: 2019.08.30 @ 08:47:27



DRILL STEM TEST REPORT

Prepared For: **Abercrombie Energy LLC**

10209 W Central Ste 2
Wichita, KS 67212

ATTN: Kevin Kessler

Fouser #1-23

23-16s-32w Scott,KS

Start Date: 2019.08.28 @ 03:33:11

End Date: 2019.08.28 @ 09:42:11

Job Ticket #: 66051 DST #: 3

Trilobite Testing, Inc
1515 Commerce Parkway Hays, KS 67601
ph: 785-625-4778 fax: 785-625-5620

Printed: 2019.08.30 @ 08:47:03



TRILOBITE TESTING, INC.

DRILL STEM TEST REPORT

Abercrombie Energy LLC

23-16s-32w Scott,KS

10209 W Central Ste 2
Wichita, KS 67212

Fouser #1-23

Job Ticket: 66051

DST#: 3

ATTN: Kevin Kessler

Test Start: 2019.08.28 @ 03:33:11

GENERAL INFORMATION:

Formation: **Marmaton**

Deviated: No Whipstock: ft (KB)

Time Tool Opened: 05:56:41

Time Test Ended: 09:42:11

Test Type: Conventional Bottom Hole (Reset)

Tester: Brandon Turley

Unit No: 79

Interval: 4415.00 ft (KB) To 4470.00 ft (KB) (TVD)

Reference Elevations: 2980.00 ft (KB)

Total Depth: 4470.00 ft (KB) (TVD)

2973.00 ft (CF)

Hole Diameter: 7.88 inches Hole Condition: Good

KB to GR/CF: 7.00 ft

Serial #: 8166

Outside

Press@RunDepth: 19.04 psig @ 4416.00 ft (KB)

Capacity: 8000.00 psig

Start Date: 2019.08.28

End Date:

2019.08.28

Last Calib.:

2019.08.28

Start Time: 03:33:16

End Time:

09:42:10

Time On Btm:

2019.08.28 @ 05:56:11

Time Off Btm:

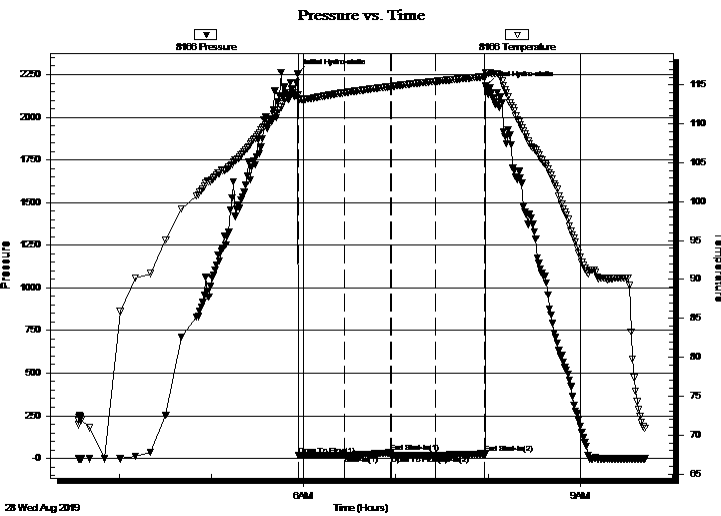
2019.08.28 @ 07:58:41

TEST COMMENT: IF: 1/2" blow built to 3/4"

IS: No return.

FF: No blow.

FS: No return.



PRESSURE SUMMARY

Time (Min.)	Pressure (psig)	Temp (deg F)	Annotation
0	2253.79	113.70	Initial Hydro-static
1	17.06	113.16	Open To Flow (1)
30	18.27	113.99	Shut-In(1)
61	33.09	114.79	End Shut-In(1)
61	17.48	114.80	Open To Flow (2)
90	19.04	115.46	Shut-In(2)
122	27.52	116.06	End Shut-In(2)
123	2186.12	116.55	Final Hydro-static

Recovery

Length (ft)	Description	Volume (bbl)
5.00	mud 100%m	0.02

* Recovery from multiple tests

Gas Rates

Choke (inches)	Pressure (psig)	Gas Rate (Mcf/d)



**TRILOBITE
TESTING, INC.**

DRILL STEM TEST REPORT

TOOL DIAGRAM

Abercrombie Energy LLC

23-16s-32w Scott, KS

10209 W Central Ste 2
Wichita, KS 67212

Fouser #1-23

Job Ticket: 66051

DST#: 3

ATTN: Kevin Kessler

Test Start: 2019.08.28 @ 03:33:11

Tool Information

Drill Pipe:	Length: 4296.00 ft	Diameter: 3.80 inches	Volume: 60.26 bbl	Tool Weight: 2000.00 lb
Heavy Wt. Pipe:	Length: 0.00 ft	Diameter: 0.00 inches	Volume: 0.00 bbl	Weight set on Packer: 30000.00 lb
Drill Collar:	Length: 121.00 ft	Diameter: 2.25 inches	Volume: 0.60 bbl	Weight to Pull Loose: 80000.00 lb
			<u>Total Volume: 60.86 bbl</u>	Tool Chased 0.00 ft
Drill Pipe Above KB:	29.00 ft			String Weight: Initial 63000.00 lb
Depth to Top Packer:	4415.00 ft			Final 63000.00 lb
Depth to Bottom Packer:	ft			
Interval between Packers:	55.00 ft			
Tool Length:	82.00 ft			
Number of Packers:	2	Diameter: 6.75 inches		

Tool Comments:

Tool Description

Tool Description	Length (ft)	Serial No.	Position	Depth (ft)	Accum. Lengths
Stubb	1.00			4389.00	
Shut In Tool	5.00			4394.00	
Hydraulic tool	5.00			4399.00	
Jars	5.00			4404.00	
Safety Joint	2.00			4406.00	
Packer	5.00			4411.00	27.00 Bottom Of Top Packer
Packer	4.00			4415.00	
Stubb	1.00			4416.00	
Recorder	0.00	6651	Inside	4416.00	
Recorder	0.00	8166	Outside	4416.00	
Perforations	15.00			4431.00	
Change Over Sub	1.00			4432.00	
Drill Pipe	32.00			4464.00	
Change Over Sub	1.00			4465.00	
Bullnose	5.00			4470.00	55.00 Bottom Packers & Anchor

Total Tool Length: 82.00



**TRILOBITE
TESTING, INC.**

DRILL STEM TEST REPORT

FLUID SUMMARY

Abercrombie Energy LLC

23-16s-32w Scott,KS

10209 W Central Ste 2
Wichita, KS 67212

Fouser #1-23

Job Ticket: 66051

DST#: 3

ATTN: Kevin Kessler

Test Start: 2019.08.28 @ 03:33:11

Mud and Cushion Information

Mud Type: Gel Chem

Cushion Type:

Oil API:

0 deg API

Mud Weight: 9.00 lb/gal

Cushion Length:

ft

Water Salinity:

0 ppm

Viscosity: 52.00 sec/qt

Cushion Volume:

bbbl

Water Loss: 8.79 in³

Gas Cushion Type:

Resistivity: 0.00 ohm.m

Gas Cushion Pressure:

psig

Salinity: 4000.00 ppm

Filter Cake: 1.00 inches

Recovery Information

Recovery Table

Length ft	Description	Volume bbl
5.00	mud 100%m	0.025

Total Length: 5.00 ft Total Volume: 0.025 bbl

Num Fluid Samples: 0

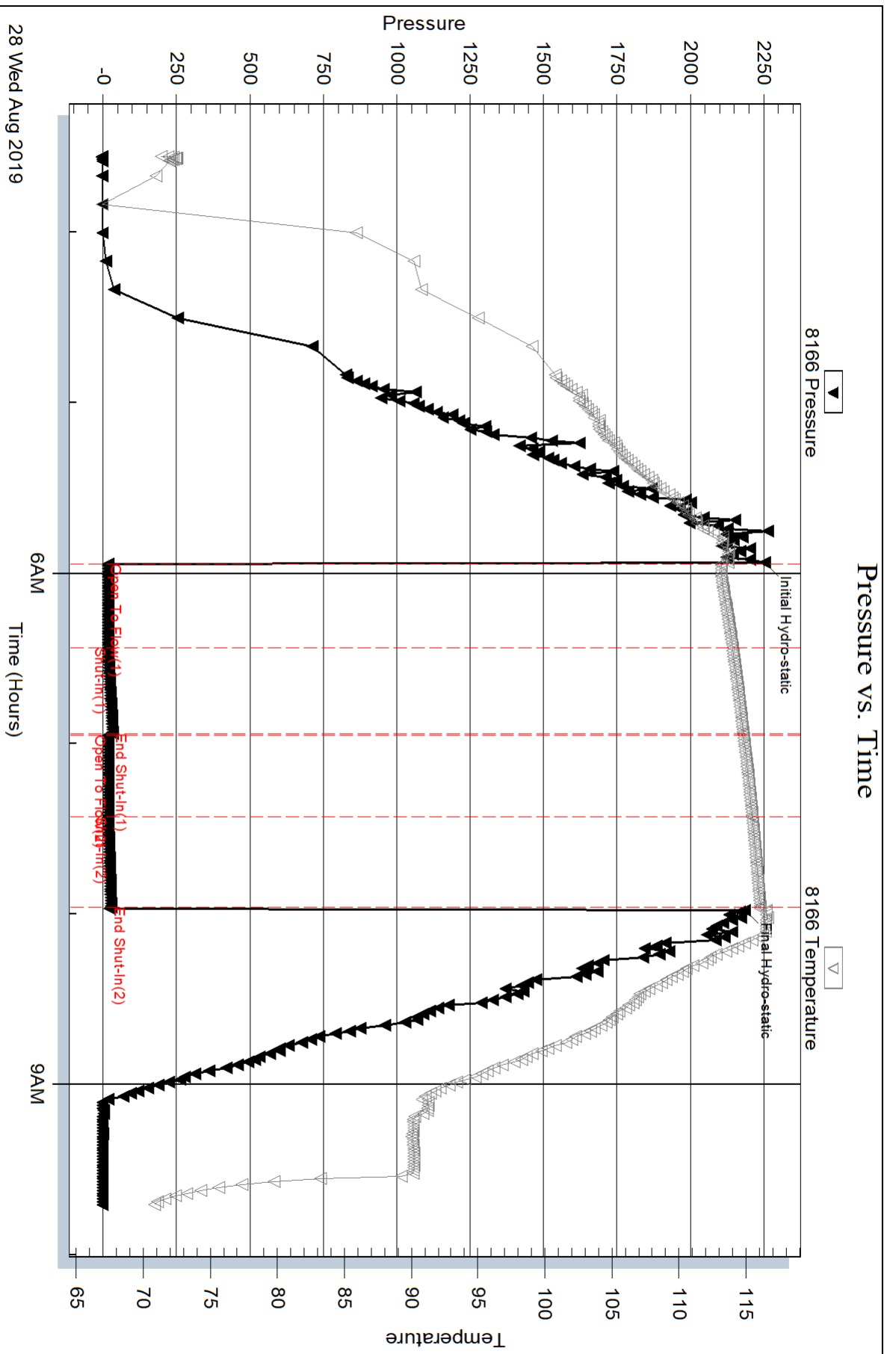
Num Gas Bombs: 0

Serial #:

Laboratory Name:

Laboratory Location:

Recovery Comments:



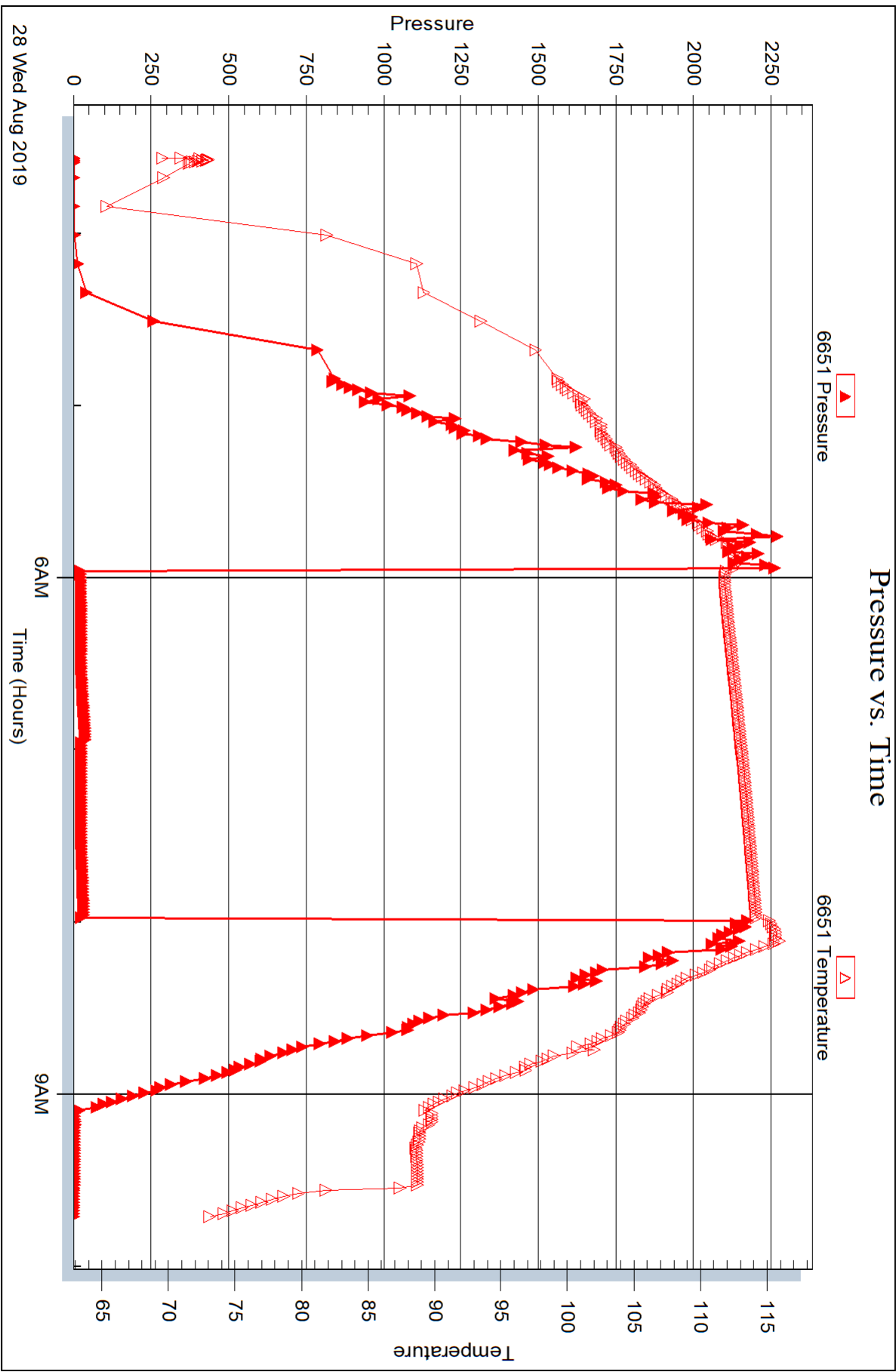
Serial #: 6651

Inside

Abercrombie Energy LLC

Fouser #1-23

DST Test Number: 3





DRILL STEM TEST REPORT

Prepared For: **Abercrombie Energy LLC**

10209 W Central Ste 2
Wichita, KS 67212

ATTN: Kevin Kessler

Fouser #1-23

23-16s-32w Scott,KS

Start Date: 2019.08.28 @ 23:15:11

End Date: 2019.08.29 @ 07:13:41

Job Ticket #: 66052 DST #: 4

Trilobite Testing, Inc
1515 Commerce Parkway Hays, KS 67601
ph: 785-625-4778 fax: 785-625-5620

Printed: 2019.08.30 @ 08:46:38



TRILOBITE TESTING, INC.

DRILL STEM TEST REPORT

Abercrombie Energy LLC

23-16s-32w Scott,KS

10209 W Central Ste 2
Wichita, KS 67212

Fouser #1-23

ATTN: Kevin Kessler

Job Ticket: 66052

DST#: 4

Test Start: 2019.08.28 @ 23:15:11

GENERAL INFORMATION:

Formation: **Myrick - Ft Scott**

Deviated: No Whipstock: ft (KB)

Time Tool Opened: 01:32:11

Time Test Ended: 07:13:41

Test Type: Conventional Bottom Hole (Reset)

Tester: Brandon Turley

Unit No: 79

Interval: 4485.00 ft (KB) To 4550.00 ft (KB) (TVD)

Reference Elevations: 2980.00 ft (KB)

Total Depth: 4550.00 ft (KB) (TVD)

2973.00 ft (CF)

Hole Diameter: 7.88 inches Hole Condition: Good

KB to GR/CF: 7.00 ft

Serial #: 8166 Outside

Press@RunDepth: 29.05 psig @ 4486.00 ft (KB)

Capacity: 8000.00 psig

Start Date: 2019.08.28

End Date:

2019.08.29

Last Calib.:

2019.08.29

Start Time: 23:15:16

End Time:

07:13:40

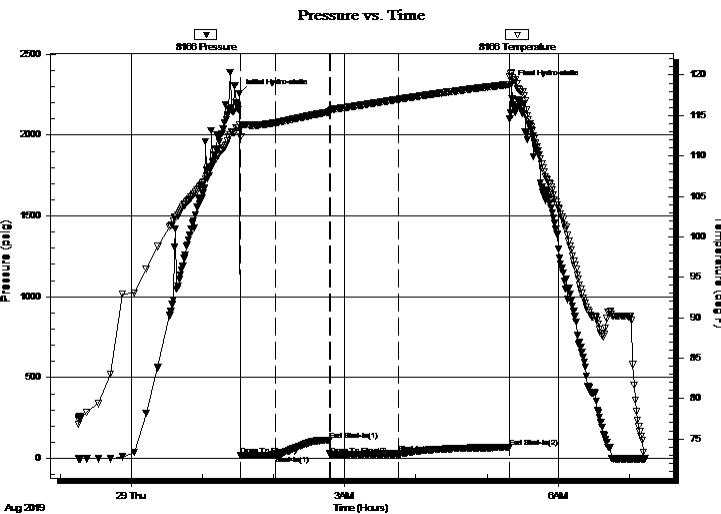
Time On Btm:

2019.08.29 @ 01:31:11

Time Off Btm:

2019.08.29 @ 05:20:41

TEST COMMENT: IF: 1/2" blow built to 3"
IS: No return.
FF: 3/4" blow built to 3 1/2"
FS: No return.



PRESSURE SUMMARY

Time (Min.)	Pressure (psig)	Temp (deg F)	Annotation
0	2256.25	113.79	Initial Hydro-static
1	18.64	112.34	Open To Flow (1)
31	22.32	114.11	Shut-In(1)
76	114.11	115.44	End Shut-In(1)
77	21.22	115.51	Open To Flow (2)
134	29.05	116.99	Shut-In(2)
228	68.06	118.83	End Shut-In(2)
230	2311.91	120.32	Final Hydro-static

Recovery

Length (ft)	Description	Volume (bbl)
20.00	gocm 5%g 10%o 85%m	0.10
10.00	go 5%g 95%o	0.05
0.00	156 GIP	0.00

* Recovery from multiple tests

Gas Rates

Choke (inches)	Pressure (psig)	Gas Rate (Mcf/d)



**TRILOBITE
TESTING, INC.**

DRILL STEM TEST REPORT

TOOL DIAGRAM

Abercrombie Energy LLC

23-16s-32w Scott, KS

10209 W Central Ste 2
Wichita, KS 67212

Fouser #1-23

Job Ticket: 66052

DST#: 4

ATTN: Kevin Kessler

Test Start: 2019.08.28 @ 23:15:11

Tool Information

Drill Pipe:	Length: 4359.00 ft	Diameter: 3.80 inches	Volume: 61.15 bbl	Tool Weight: 2000.00 lb
Heavy Wt. Pipe:	Length: 0.00 ft	Diameter: 0.00 inches	Volume: 0.00 bbl	Weight set on Packer: 30000.00 lb
Drill Collar:	Length: 121.00 ft	Diameter: 2.25 inches	Volume: 0.60 bbl	Weight to Pull Loose: 80000.00 lb
			<u>Total Volume: 61.75 bbl</u>	Tool Chased 0.00 ft
Drill Pipe Above KB:	22.00 ft			String Weight: Initial 65000.00 lb
Depth to Top Packer:	4485.00 ft			Final 66000.00 lb
Depth to Bottom Packer:	ft			
Interval between Packers:	65.00 ft			
Tool Length:	92.00 ft			
Number of Packers:	2	Diameter: 6.75 inches		

Tool Comments:

Tool Description	Length (ft)	Serial No.	Position	Depth (ft)	Accum. Lengths
------------------	-------------	------------	----------	------------	----------------

Stubb	1.00			4459.00	
Shut In Tool	5.00			4464.00	
Hydraulic tool	5.00			4469.00	
Jars	5.00			4474.00	
Safety Joint	2.00			4476.00	
Packer	5.00			4481.00	27.00 Bottom Of Top Packer
Packer	4.00			4485.00	
Stubb	1.00			4486.00	
Recorder	0.00	6651	Inside	4486.00	
Recorder	0.00	8166	Outside	4486.00	
Perforations	25.00			4511.00	
Change Over Sub	1.00			4512.00	
Drill Pipe	32.00			4544.00	
Change Over Sub	1.00			4545.00	
Bullnose	5.00			4550.00	65.00 Bottom Packers & Anchor

Total Tool Length: 92.00



**TRILOBITE
TESTING, INC.**

DRILL STEM TEST REPORT

FLUID SUMMARY

Abercrombie Energy LLC

23-16s-32w Scott,KS

10209 W Central Ste 2
Wichita, KS 67212

Fouser #1-23

Job Ticket: 66052

DST#: 4

ATTN: Kevin Kessler

Test Start: 2019.08.28 @ 23:15:11

Mud and Cushion Information

Mud Type: Gel Chem

Cushion Type:

Oil API:

35 deg API

Mud Weight: 9.00 lb/gal

Cushion Length:

ft

Water Salinity:

0 ppm

Viscosity: 54.00 sec/qt

Cushion Volume:

bbbl

Water Loss: 9.59 in³

Gas Cushion Type:

Resistivity: 0.00 ohm.m

Gas Cushion Pressure:

psig

Salinity: 4100.00 ppm

Filter Cake: 1.00 inches

Recovery Information

Recovery Table

Length ft	Description	Volume bbbl
20.00	gocm 5%g 10%o 85%m	0.098
10.00	go 5%g 95%o	0.049
0.00	156 GIP	0.000

Total Length: 30.00 ft Total Volume: 0.147 bbl

Num Fluid Samples: 0

Num Gas Bombs: 0

Serial #:

Laboratory Name:

Laboratory Location:

Recovery Comments: 35@60=35

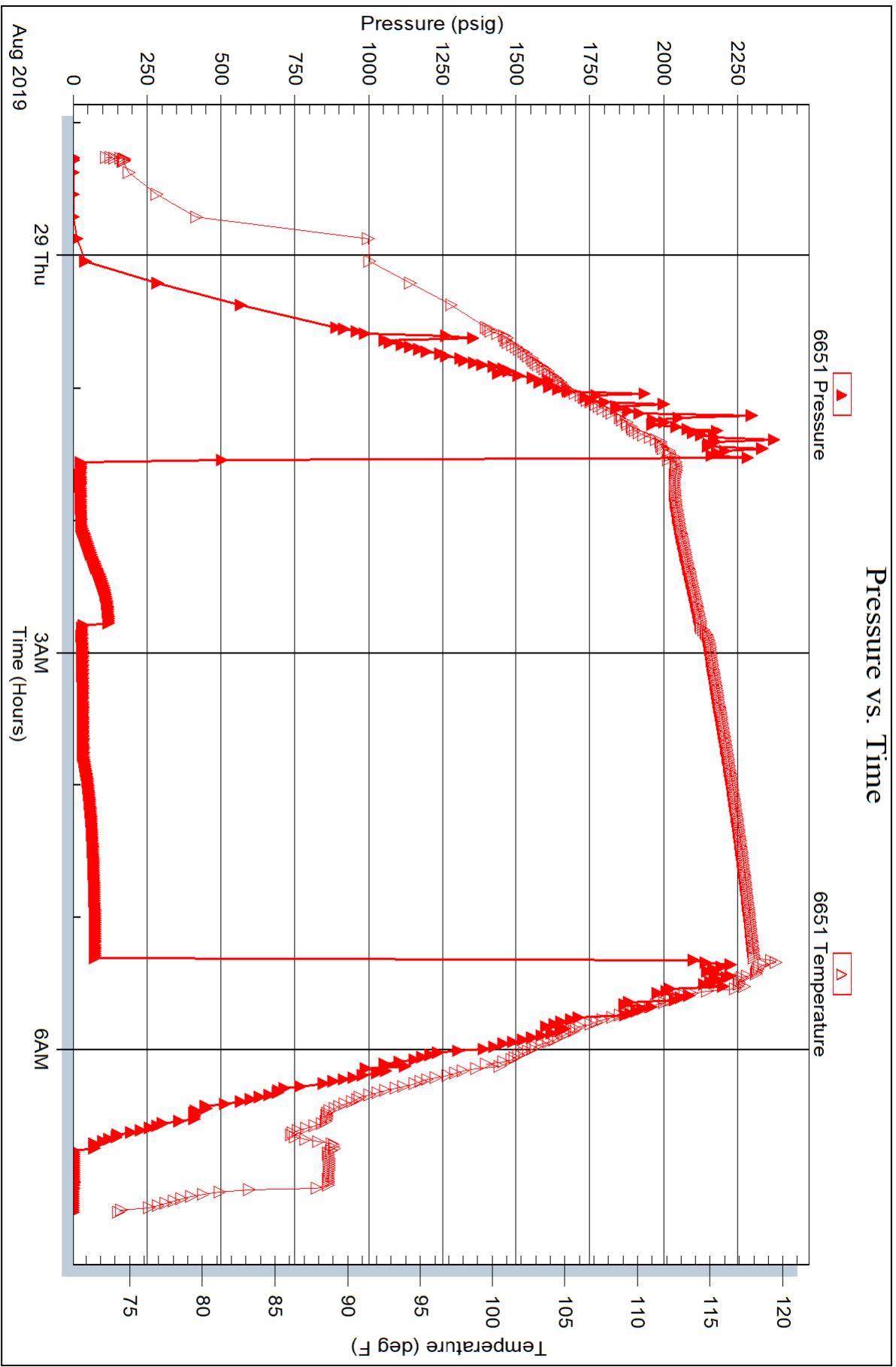
Serial #: 6651

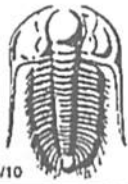
Inside

Abercrombie Energy LLC

Fouser #1-23

DST Test Number: 4





TRILOBITE TESTING INC.

1515 Commerce Parkway • Hays, Kansas 67601

Test Ticket

NO. 65249

Well Name & No. Fo4ser 1-23 Test No. 1 Date 8-26-19
 Company Abercrombie Energy LLC Elevation 2980 KB 2973 GL
 Address 10209 W Century Ste 2 Wichita, KS 67212
 Co. Rep / Geo. Kevin Kessler Rig STP #1
 Location: Sec. 23 Twp 16S Rge. 32W Co. Scott State KS

Interval Tested 4300 4320 Zone Tested Lansing L Middle creek
 Anchor Length 20 Drill Pipe Run 4170 Mud Wt. 9.0
 Top Packer Depth 4295 Drill Collars Run 121 Vis 59
 Bottom Packer Depth 4300 Wt. Pipe Run --- WL 6.4
 Total Depth 4320 Chlorides 2000 ppm System LCM 2
 Blow Description ±F: ¼ blow built to 2 ½.
±S: No return.
F±: ¼ blow built to 3.
F±: No return.

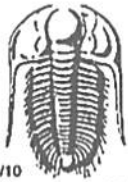
Rec	Feet of	%gas	%oil	%water	%mud
<u>30</u>	<u>wcm</u>		<u>40</u>	<u>60</u>	
<u>121</u>	<u>MCW</u>		<u>90</u>	<u>10</u>	

Rec Total 151 BHT 119 Gravity --- API RW ,23 @ 84 °F Chlorides 25,000 ppm

(A) Initial Hydrostatic <u>2108</u>	<input checked="" type="checkbox"/> Test 1300	T-On Location <u>4:00 10:50</u>
(B) First Initial Flow <u>16</u>	<input checked="" type="checkbox"/> Jars 250	T-Started <u>11:12</u>
(C) First Final Flow <u>43</u>	<input checked="" type="checkbox"/> Safety Joint 75	T-Open <u>13:23</u>
(D) Initial Shut-In <u>1070</u>	<input checked="" type="checkbox"/> Circ Sub <u>N/C</u>	T-Pulled <u>17:08</u>
(E) Second Initial Flow <u>46</u>	<input checked="" type="checkbox"/> Hourly Standby 2h 200	T-Out <u>19:22</u>
(F) Second Final Flow <u>79</u>	<input checked="" type="checkbox"/> Mileage <u>36-x2</u> 72	Comments <u>was told</u>
(G) Final Shut-In <u>1050</u>	<input type="checkbox"/> Sampler	<u>No short trip got</u>
(H) Final Hydrostatic <u>2160</u>	<input type="checkbox"/> Straddle	<u>to the rig just got on bottom</u>
	<input type="checkbox"/> Shale Packer	<u>with short trip NO call</u>
	<input type="checkbox"/> Extra Packer	<input type="checkbox"/> Ruined Shale Packer
Initial Open <u>30</u>	<input type="checkbox"/> Extra Recorder	<input type="checkbox"/> Ruined Packer
Initial Shut-In <u>45</u>	<input type="checkbox"/> Day Standby	<input type="checkbox"/> Extra Copies
Final Flow <u>60</u>	<input type="checkbox"/> Accessibility	Sub Total <u>0</u>
Final Shut-In <u>90</u>	Sub Total <u>1897</u>	Total <u>1897</u>

Approved By Kevin Kessler Our Representative [Signature]

Trilobite Testing Inc. shall not be liable for damaged of any kind of the property or personnel of the one for whom a test is made, or for any loss suffered or sustained, directly or indirectly, through the use of its equipment, or its statements or opinion concerning the results of any test, tools lost or damaged in the hole shall be paid for at cost by the party for whom the test is made.



TRILOBITE TESTING INC.

1515 Commerce Parkway • Hays, Kansas 67601

Test Ticket

NO. 65250

Well Name & No. Fouser 1-23 Test No. 2 Date 8-27-19
 Company Abercrombie Energy LLC Elevation 2980 KB 2973 GL
 Address _____
 Co. Rep / Geo. Kevin Kessler Rig STP #1
 Location: Sec. 23 Twp 16S Rge. 32W Co. Scott State KS

Interval Tested 4380 4425 Zone Tested Marmaton
 Anchor Length 45 Drill Pipe Run 4264 Mud Wt. 8.9
 Top Packer Depth 4375 Drill Collars Run 121 Vis 52
 Bottom Packer Depth 4380 Wt. Pipe Run _____ WL 7.2
 Total Depth 4425 Chlorides 3300 ppm System LCM 2

Blow Description IF: 1/4 blow built to 1/2 died to 1/4.
IS: No return.
FK: No blow.
FS: No return.

Rec	Feet of	%gas	%oil	%water	%mud
<u>5</u>	<u>mud</u>			<u>100</u>	
Rec	Feet of	%gas	%oil	%water	%mud
Rec	Feet of	%gas	%oil	%water	%mud
Rec	Feet of	%gas	%oil	%water	%mud
Rec	Feet of	%gas	%oil	%water	%mud

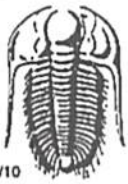
Rec Total 5 BHT 116 Gravity _____ API RW _____ @ _____ °F Chlorides _____ ppm

- (A) Initial Hydrostatic 2184 Test 1300
- (B) First Initial Flow 19 Jars 250
- (C) First Final Flow 20 Safety Joint 75
- (D) Initial Shut-In 38 Circ Sub N/C
- (E) Second Initial Flow 19 Hourly Standby _____
- (F) Second Final Flow 20 Mileage 36 - 36
- (G) Final Shut-In 32 Sampler _____
- (H) Final Hydrostatic 2201 Straddle _____
- Initial Open 30 Shale Packer _____
- Initial Shut-In 30 Extra Packer _____
- Final Flow 30 Extra Recorder _____
- Final Shut-In 30 Day Standby _____
- Sub Total 1661 Accessibility _____

T-On Location 10:15
 T-Started 10:41
 T-Open 12:43
 T-Pulled 14:43
 T-Out 16:47
 Comments _____
 EM Tool _____
 Ruined Shale Packer _____
 Ruined Packer _____
 Extra Copies _____
 Sub Total 0
 Total 1661
 MP/DST Disc't _____

Approved By Kevin Kessler Our Representative _____

Trilobite Testing Inc. shall not be liable for damaged of any kind of the property or personnel of the one for whom a test is made, or for any loss suffered or sustained, directly or indirectly, through the use of its equipment, or its statements or opinion concerning the results of any test, tools lost or damaged in the hole shall be paid for at cost by the party for whom the test is made.



TRILOBITE TESTING INC.

1515 Commerce Parkway • Hays, Kansas 67601

Test Ticket 66051

NO.

Well Name & No. Fouzer 1-23 Test No. 3 Date 8-28-19
 Company Abercrombie Energy LLC Elevation 2980 KB 2973 GL
 Address _____
 Co. Rep / Geo. Kevin Kessler Rig STP #1
 Location: Sec. 23 Twp 165 Rge. 32W Co. Scott State KS

Interval Tested 4415 4470 Zone Tested Marmaton
 Anchor Length 55 Drill Pipe Run 4296 Mud Wt. 9.1
 Top Packer Depth 4410 Drill Collars Run 121 Vis 52
 Bottom Packer Depth 4415 Wt. Pipe Run _____ WL 8.8
 Total Depth 4470 Chlorides 4000 ppm System LCM 2
 Blow Description IF: 1/2 blow built to 3/4.
IS: No return.
FF: No blow.
FS: No return.

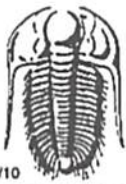
Rec	Feet of	%gas	%oil	%water	%mud
<u>5</u>	<u>mud</u>			<u>100</u>	
Rec	Feet of	%gas	%oil	%water	%mud
Rec	Feet of	%gas	%oil	%water	%mud
Rec	Feet of	%gas	%oil	%water	%mud
Rec	Feet of	%gas	%oil	%water	%mud

Rec Total 5 BHT 116 Gravity _____ API RW _____ @ _____ °F Chlorides _____ ppm

(A) Initial Hydrostatic <u>2253</u>	<input checked="" type="checkbox"/> Test 1300	T-On Location <u>2:10</u>
(B) First Initial Flow <u>17</u>	<input checked="" type="checkbox"/> Jars 250	T-Started <u>3:33</u>
(C) First Final Flow <u>18</u>	<input checked="" type="checkbox"/> Safety Joint <u>75</u>	T-Open <u>5:56</u>
(D) Initial Shut-In <u>33</u>	<input checked="" type="checkbox"/> Circ Sub <u>NIL</u>	T-Pulled <u>7:56</u>
(E) Second Initial Flow <u>17</u>	<input type="checkbox"/> Hourly Standby	T-Out <u>9:45</u>
(F) Second Final Flow <u>19</u>	<input checked="" type="checkbox"/> Mileage <u>36</u> - 36	Comments _____
(G) Final Shut-In <u>27</u>	<input type="checkbox"/> Sampler	_____
(H) Final Hydrostatic <u>2186</u>	<input type="checkbox"/> Straddle	<input type="checkbox"/> EM Tool
Initial Open <u>30</u>	<input type="checkbox"/> Shale Packer	<input type="checkbox"/> Ruined Shale Packer
Initial Shut-In <u>30</u>	<input type="checkbox"/> Extra Packer	<input type="checkbox"/> Ruined Packer
Final Flow <u>30</u>	<input type="checkbox"/> Extra Recorder	<input type="checkbox"/> Extra Copies
Final Shut-In <u>30</u>	<input type="checkbox"/> Day Standby	Sub Total <u>0</u>
	<input type="checkbox"/> Accessibility	Total <u>1661</u>
	Sub Total <u>1661</u>	MP/DST Disc't _____

Approved By Kevin Kessler Our Representative [Signature]

Trilobite Testing Inc. shall not be liable for damaged of any kind of the property or personnel of the one for whom a test is made, or for any loss suffered or sustained, directly or indirectly, through the use of its equipment, or its statements or opinion concerning the results of any test, tools lost or damaged in the hole shall be paid for at cost by the party for whom the test is made.



TRILOBITE TESTING INC.

1515 Commerce Parkway • Hays, Kansas 67601

Test Ticket 66052

NO.

Well Name & No. Foyser 1-23 Test No. 4 Date 8-29-19
 Company Abercrombie Energy LLC Elevation 2980 KB 2973 GL
 Address _____
 Co. Rep / Geo. Kevin Kessler Rig STP #1
 Location: Sec. 23 Twp 16S Rge. 32W Co. Scott State KS

Interval Tested 4485 4550 Zone Tested Myrick - Ft Scott
 Anchor Length 65 Drill Pipe Run 4359 Mud Wt. 9.2
 Top Packer Depth 4480 Drill Collars Run 121 Vis 54
 Bottom Packer Depth 4485 Wt. Pipe Run _____ WL 9.6
 Total Depth 4550 Chlorides 4100 ppm System LCM 1

Blow Description IF: 1/2 blow built to 3,
IS: No return.
FP: 3/4 blow built to 3 1/2.
FS: No return.

Rec	Feet of	%gas	%oil	%water	%mud
<u>10</u>	<u>90</u>	<u>5</u>	<u>95</u>		
<u>20</u>	<u>90cm</u>	<u>5</u>	<u>10</u>	<u>85</u>	
<u>156</u>	<u>GIP</u>				

Rec Total 30 BHT 118 Gravity 35 API RW _____ @ _____ ° F Chlorides _____ ppm

(A) Initial Hydrostatic 2256 Test 1300 T-On Location 22:40
 (B) First Initial Flow 18 Jars 250 T-Started 23:15
 (C) First Final Flow 22 Safety Joint 75 T-Open 1:37
 (D) Initial Shut-In 114 Circ Sub NIC T-Pulled 5:17
 (E) Second Initial Flow 21 Hourly Standby _____ T-Out 7:15
 (F) Second Final Flow 29 Mileage 36 - 72 Comments _____
 (G) Final Shut-In 68 Sampler _____
 (H) Final Hydrostatic 2311 Straddle _____
 Shale Packer _____
 Extra Packer _____
 Extra Recorder _____
 Day Standby _____
 Accessibility _____

Initial Open 30
 Initial Shut-In 45
 Final Flow 60
 Final Shut-In 90
 Sub Total 1697
 MP/DST Disc't _____

Approved By Kevin Kessler Our Representative [Signature]

Trilobite Testing Inc. shall not be liable for damaged of any kind of the property or personnel of the one for whom a test is made, or for any loss suffered or sustained, directly or indirectly, through the use of its equipment, or its statements or opinion concerning the results of any test, tools lost or damaged in the hole shall be paid for at cost by the party for whom the test is made.



TRILOBITE TESTING

Machine Shop

Toll Free (24 hr.) 800-728-5369

Hays, FAX# (785) 625-5620

www.trilobitetesting.com

trilobite@eaglecom.net

Hays, Kansas
Pratt, Kansas
Scott City, Kansas
Hugoton, Kansas
Oberlin, Kansas

DST #1

4:00 when showed up
left at 7:00

back at 10:50

done at 7:22 pm

ran two short trips
when they werent going
to short trip at all.