



TRILOBITE TESTING, INC.

DRILL STEM TEST REPORT

Val Energy Inc
 125 N Market St STE 1110 Wichita KS 67202
 ATTN: Wes Hansen

23/4s/32w Rawlins KS
Schmaderer #1-23
 Job Ticket: 66030 **DST#: 1**
 Test Start: 2019.09.03 @ 06:36:00

GENERAL INFORMATION:

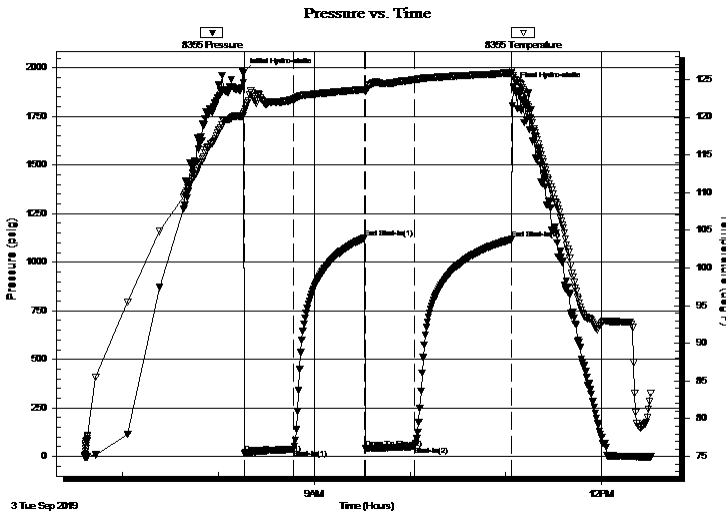
Formation: **Lansing C-D**
 Deviated: No Whipstock: ft (KB)
 Test Type: Conventional Bottom Hole (Initial)
 Time Tool Opened: 08:16:10 Tester: Shaw n Wheelbarger
 Time Test Ended: 12:31:20 Unit No: 76
 Interval: **3950.00 ft (KB) To 4000.00 ft (KB) (TVD)** Reference Elevations: 2949.00 ft (KB)
 Total Depth: 4000.00 ft (KB) (TVD) 2944.00 ft (CF)
 Hole Diameter: 7.88 inches Hole Condition: Fair KB to GR/CF: 5.00 ft

Serial #: 8355

Press@RunDepth: 51.36 psig @ ft (KB) Capacity: 8000.00 psig
 Start Date: 2019.09.03 End Date: 2019.09.03 Last Calib.: 2019.09.03
 Start Time: 06:36:01 End Time: 12:31:20 Time On Btm: 2019.09.03 @ 08:15:20
 Time Off Btm: 2019.09.03 @ 11:04:39

TEST COMMENT: 30-IF-1/4" Blow @ open Built to 1 1/4"
 45-ISI-No blow back
 30-FF-Weak surface blow built to 1/4"
 60-FSI- No blow

PRESSURE SUMMARY



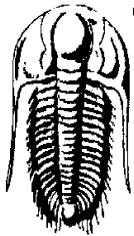
Time (Min.)	Pressure (psig)	Temp (deg F)	Annotation
0	1973.67	120.23	Initial Hydro-static
1	18.37	120.71	Open To Flow (1)
32	36.99	122.39	Shut-In(1)
77	1124.17	123.68	End Shut-In(1)
77	40.88	123.35	Open To Flow (2)
108	51.36	124.98	Shut-In(2)
169	1118.22	125.87	End Shut-In(2)
170	1903.74	125.47	Final Hydro-static

Recovery

Length (ft)	Description	Volume (bbl)
91.00	OSM, 3%O, 97%M	0.45

Gas Rates

Choke (inches)	Pressure (psig)	Gas Rate (Mcf/d)



**TRILOBITE
TESTING, INC.**

DRILL STEM TEST REPORT

Val Energy Inc
125 N Market St STE 1110 Wichita KS 67202
ATTN: Wes Hansen

23/4s/32w Rawlins KS
Schmaderer #1-23
Job Ticket: 66030 **DST#: 1**
Test Start: 2019.09.03 @ 06:36:00

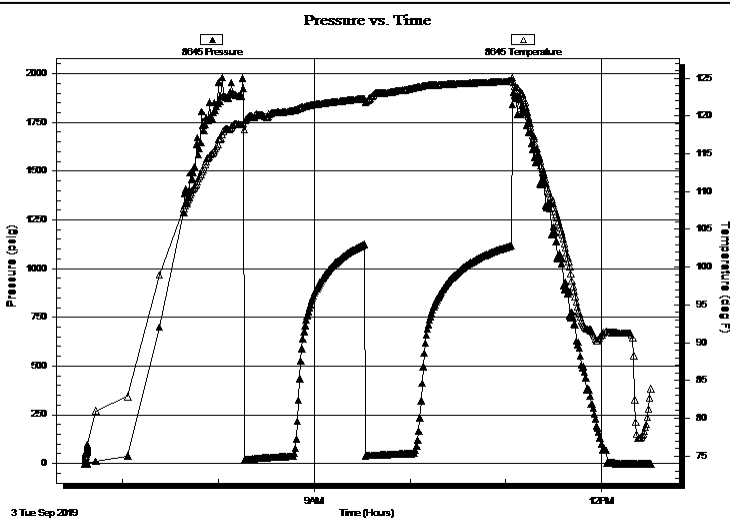
GENERAL INFORMATION:

Formation: **Lansing C-D**
Deviated: No Whipstock: ft (KB) Test Type: Conventional Bottom Hole (Initial)
Time Tool Opened: 08:16:10 Tester: Shaw n Wheelbarger
Time Test Ended: 12:31:20 Unit No: 76
Interval: 3950.00 ft (KB) To 4000.00 ft (KB) (TVD) Reference Elevations: 2949.00 ft (KB)
Total Depth: 4000.00 ft (KB) (TVD) 2944.00 ft (CF)
Hole Diameter: 7.88 inchesHole Condition: Fair KB to GR/CF: 5.00 ft

Serial #: 8645

Press@RunDepth: psig @ ft (KB) Capacity: 8000.00 psig
Start Date: 2019.09.03 End Date: 2019.09.03 Last Calib.: 2019.09.03
Start Time: 06:36:01 End Time: 12:30:50 Time On Btm:
Time Off Btm:

TEST COMMENT: 30-IF-1/4" Blow @ open Built to 1 1/4"
45-ISI-No blow back
30-FF-Weak surface blow built to 1/4"
60-FSI- No blow



PRESSURE SUMMARY

Time (Min.)	Pressure (psig)	Temp (deg F)	Annotation

Recovery

Length (ft)	Description	Volume (bbl)
91.00	OSM, 3%O, 97%M	0.45

Gas Rates

Choke (inches)	Pressure (psig)	Gas Rate (Mcf/d)



**TRILOBITE
TESTING, INC.**

DRILL STEM TEST REPORT

FLUID SUMMARY

Val Energy Inc

23/4s/32w Rawlins KS

125 N Market St STE 1110 Wichita KS 67202

Schmaderer #1-23

Job Ticket: 66030

DST#: 1

ATTN: Wes Hansen

Test Start: 2019.09.03 @ 06:36:00

Mud and Cushion Information

Mud Type: Gel Chem

Cushion Type:

Oil API:

deg API

Mud Weight: 9.00 lb/gal

Cushion Length:

ft

Water Salinity:

ppm

Viscosity: 54.00 sec/qt

Cushion Volume:

bbbl

Water Loss: 7.99 in³

Gas Cushion Type:

Resistivity: ohm.m

Gas Cushion Pressure:

psig

Salinity: 1000.00 ppm

Filter Cake: 1.00 inches

Recovery Information

Recovery Table

Length ft	Description	Volume bbl
91.00	OSM, 3%O, 97%M	0.448

Total Length: 91.00 ft Total Volume: 0.448 bbl

Num Fluid Samples: 0

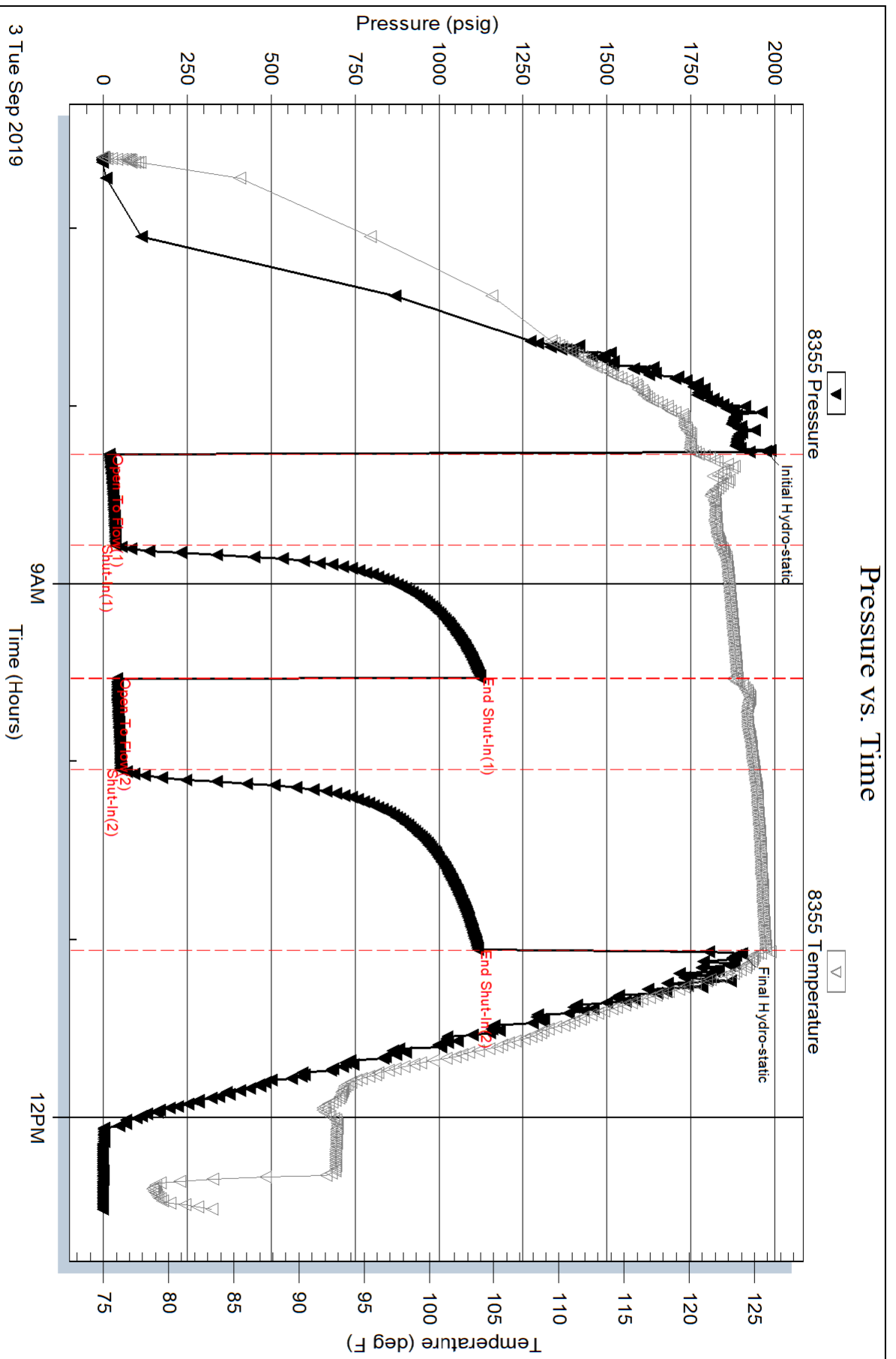
Num Gas Bombs: 0

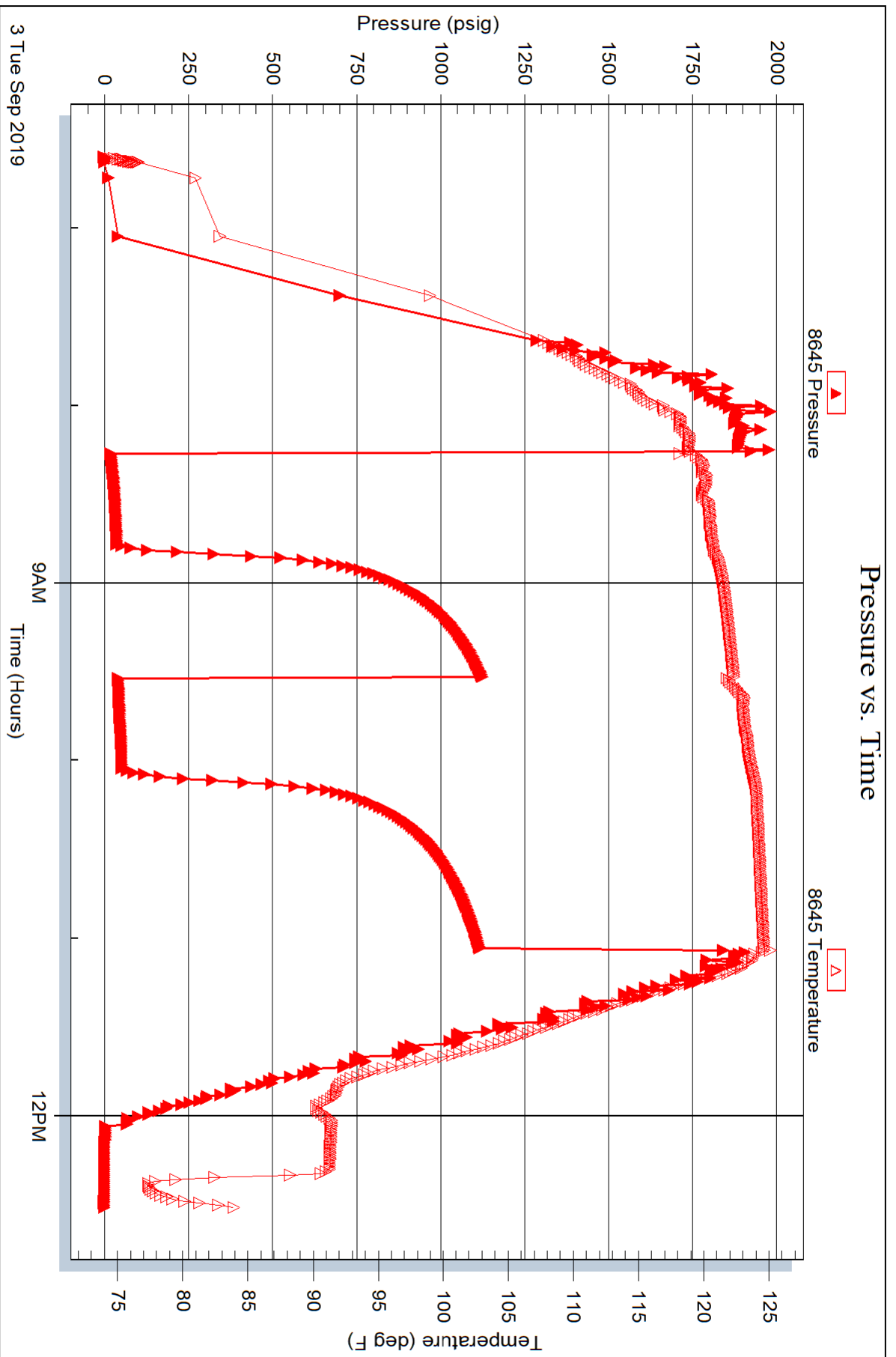
Serial #:

Laboratory Name:

Laboratory Location:

Recovery Comments:







TRILOBITE TESTING, INC.

DRILL STEM TEST REPORT

Val Energy Inc
 125 N Market St STE 1110 Wichita KS 67202
 ATTN: Wes Hansen

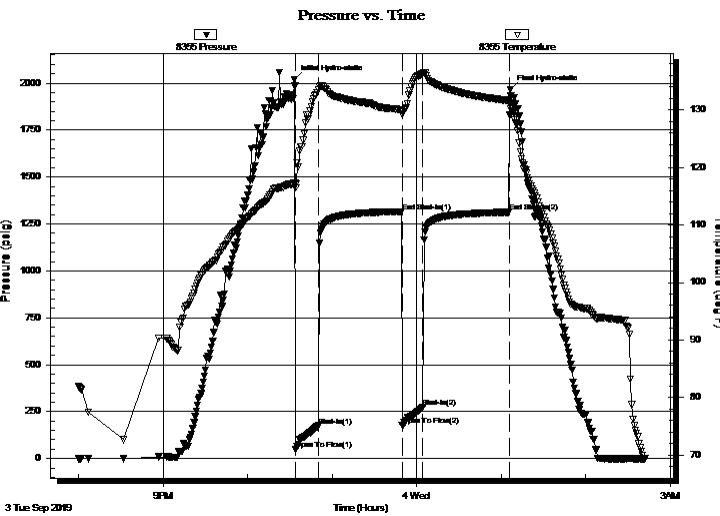
23/4s/32w Rawlins KS
Schmaderer #1-23
 Job Ticket: 66031 **DST#: 2**
 Test Start: 2019.09.03 @ 20:00:00

GENERAL INFORMATION:

Formation: **Lansing F-G**
 Deviated: No Whipstock: ft (KB)
 Time Tool Opened: 22:34:10
 Time Test Ended: 02:41:50
 Interval: **3996.00 ft (KB) To 4050.00 ft (KB) (TVD)**
 Total Depth: 4050.00 ft (KB) (TVD)
 Hole Diameter: 7.88 inches Hole Condition: Fair
 Test Type: Conventional Bottom Hole (Reset)
 Tester: Shawn Wheelbarger
 Unit No: 76
 Reference Elevations: 2949.00 ft (KB)
 2944.00 ft (CF)
 KB to GR/CF: 5.00 ft

Serial #: 8355 Outside
 Press@RunDepth: 272.39 psig @ 3997.00 ft (KB) Capacity: 8000.00 psig
 Start Date: 2019.09.03 End Date: 2019.09.04 Last Calib.: 2019.09.04
 Start Time: 20:00:01 End Time: 02:41:50 Time On Btm: 2019.09.03 @ 22:33:10
 Time Off Btm: 2019.09.04 @ 01:06:30

TEST COMMENT: 15-IF-1" Blow @ open BOB in 7 mins built to 24 1/4"
 60-ISI-No blow back
 15-FF-BOB in 7 mins 45 secs blow built to 19 1/2"
 60-FSI-No blow



PRESSURE SUMMARY

Time (Min.)	Pressure (psig)	Temp (deg F)	Annotation
0	2018.26	117.24	Initial Hydro-static
1	49.05	116.48	Open To Flow (1)
17	174.70	133.40	Shut-In(1)
77	1314.91	129.88	End Shut-In(1)
77	177.62	129.24	Open To Flow (2)
92	272.39	136.25	Shut-In(2)
153	1312.36	131.56	End Shut-In(2)
154	1964.86	130.09	Final Hydro-static

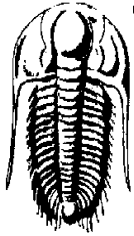
Recovery

Length (ft)	Description	Volume (bbl)
376.00	SMCW, 91%W, 9%M	4.16
172.00	HWCM 30%W, 70%M	2.41

* Recovery from multiple tests

Gas Rates

	Choke (inches)	Pressure (psig)	Gas Rate (Mcf/d)



TRILOBITE TESTING, INC.

DRILL STEM TEST REPORT

Val Energy Inc
 125 N Market St STE 1110 Wichita KS 67202
 ATTN: Wes Hansen

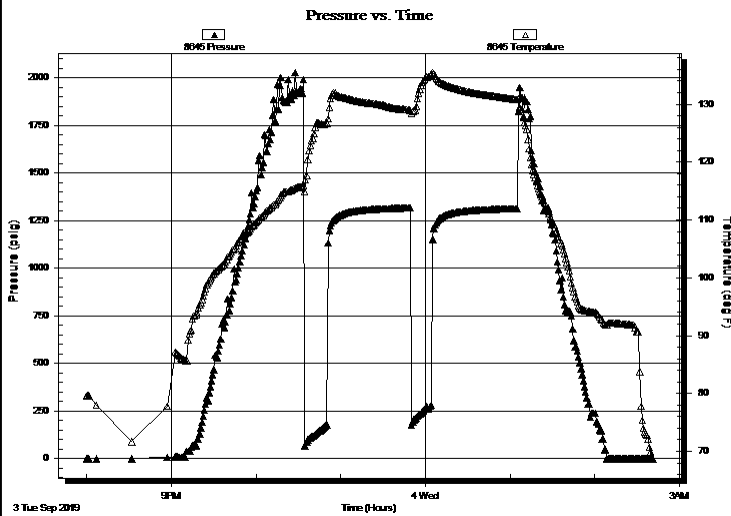
23/4s/32w Rawlins KS
Schmaderer #1-23
 Job Ticket: 66031 **DST#: 2**
 Test Start: 2019.09.03 @ 20:00:00

GENERAL INFORMATION:

Formation: **Lansing F-G**
 Deviated: No Whipstock: ft (KB)
 Time Tool Opened: 22:34:10
 Time Test Ended: 02:41:50
 Interval: **3996.00 ft (KB) To 4050.00 ft (KB) (TVD)**
 Total Depth: 4050.00 ft (KB) (TVD)
 Hole Diameter: 7.88 inches Hole Condition: Fair
 Test Type: Conventional Bottom Hole (Reset)
 Tester: Shawn Wheelbarger
 Unit No: 76
 Reference Elevations: 2949.00 ft (KB)
 2944.00 ft (CF)
 KB to GR/CF: 5.00 ft

Serial #: 8645 Inside
 Press@RunDepth: psig @ 3997.00 ft (KB) Capacity: 8000.00 psig
 Start Date: 2019.09.03 End Date: 2019.09.04 Last Calib.: 2019.09.04
 Start Time: 20:00:01 End Time: 02:41:30 Time On Btm:
 Time Off Btm:

TEST COMMENT: 15-IF-1" Blow @ open BOB in 7 mins built to 24 1/4"
 60-ISI-No blow back
 15-FF-BOB in 7 mins 45 secs blow built to 19 1/2"
 60-FSI-No blow



PRESSURE SUMMARY

Time (Min.)	Pressure (psig)	Temp (deg F)	Annotation

Recovery

Length (ft)	Description	Volume (bbl)
376.00	SMCW, 91%W, 9%M	4.16
172.00	HWCM 30%W, 70%M	2.41

Gas Rates

Choke (inches)	Pressure (psig)	Gas Rate (Mcf/d)

* Recovery from multiple tests



**TRILOBITE
TESTING, INC.**

DRILL STEM TEST REPORT

FLUID SUMMARY

Val Energy Inc

23/4s/32w Rawlins KS

125 N Market St STE 1110 Wichita KS 67202

Schmaderer #1-23

Job Ticket: 66031

DST#: 2

ATTN: Wes Hansen

Test Start: 2019.09.03 @ 20:00:00

Mud and Cushion Information

Mud Type: Gel Chem

Cushion Type:

Oil API:

deg API

Mud Weight: 9.00 lb/gal

Cushion Length:

ft

Water Salinity:

23000 ppm

Viscosity: 58.00 sec/qt

Cushion Volume:

bbbl

Water Loss: 7.99 in³

Gas Cushion Type:

Resistivity: ohm.m

Gas Cushion Pressure:

psig

Salinity: 1000.00 ppm

Filter Cake: 1.00 inches

Recovery Information

Recovery Table

Length ft	Description	Volume bbbl
376.00	SMCW, 91%W, 9%M	4.163
172.00	HWCM 30%W, 70%M	2.413

Total Length: 548.00 ft Total Volume: 6.576 bbl

Num Fluid Samples: 0

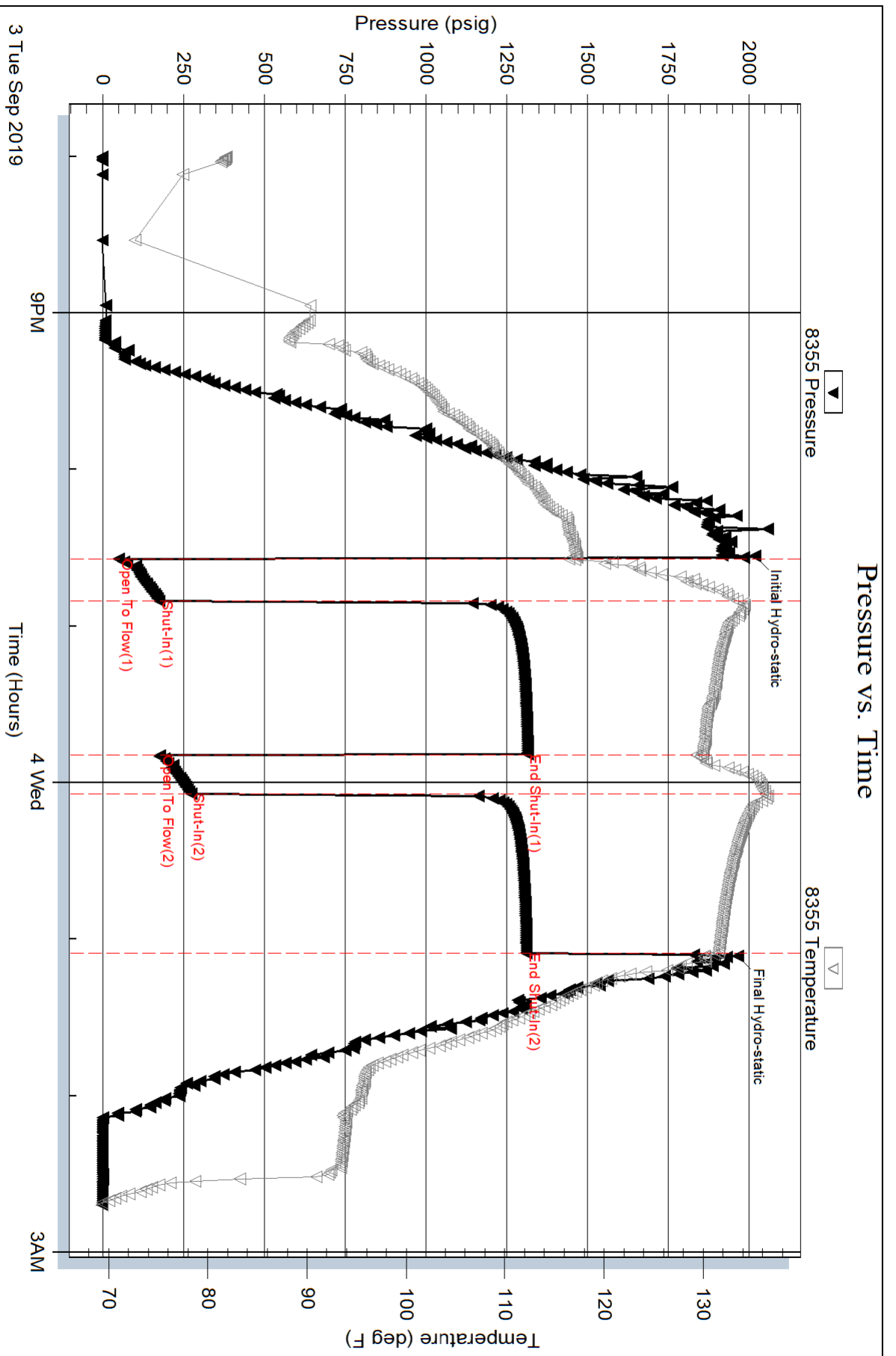
Num Gas Bombs: 0

Serial #:

Laboratory Name:

Laboratory Location:

Recovery Comments: RW .369@ 63 DEG F



Serial #: 8645

Inside

Val Energy Inc

Schmaderer #1-23

DST Test Number: 2

