

Randall Kilian Corporation

Geologist



**Certified Petroleum
Geologist #3351
License #224**

3951 Eveningglow Way

Castle Rock, CO 80104

Phone: 720-733-0420

Cell: 785-635-1349

E-mail: rkgeo53@hotmail.com

GEOLOGIST'S WELL REPORT

105
65

COMPANY JAMES P WILLIAMS ENTERPRISES, INC (35220)

WELL Paul H Williams #2 (OWWO)

FIELD Williams

LOCATION (legal) W $\frac{1}{2}$ NE NW NW

(footages) 330' FNL & 925' FWL

Section 9 TWP 10S RGE 18W

(Map) 2 mi W & 2 mi S of Plainville, Ks

COUNTY Rooks STATE Kansas

ELEVATION: 2193' K.B., 2185' G.L.

Depths measured from Kelly Bushing

A. P. I. NUMBER 15-163-23748-00-01

GEOLOGY BY Randall Kilian

PERTINENT WELL DATA

CONTRACTOR Discovery Drilling (31548)

RIG #4 HYDRAULICS D-375 6x14x54
(Galen Gaschler TP)

DRILL PIPE 4 1/2" X-H COLLARS 6 1/2" 15 (462')

CASING: SURFACE 8 5/8" @ 238' ^{original drill} cemented with 175 sxs
3866' _{Common}

PRODUCTION 4 1/2" @ 3874' w/ 250 sx Common
DV @ 2150' w/ 400 sx QMBC

DRILLING FLUID. COMPANY Andy's Mud & Chemical Co.
(Aaron Blew)

TYPE: Chemical-Pac

REMARKS: Full service, high LCM

DRILL STEM TESTS: COMPANY _____

NUMBER OF TESTS _____

ELECTIC LOGS: COMPANY Gemini Wireline, LLC

DETAIL (5") 3100' - RTD

TYPE DI, Comp N-D

DRILLING TIME FROM 3100' TO RTD

SAMPLE TIME FROM 3100' TO RTD

SUPERVISION FROM 3100' TO RTD

VERTICAL DEVIATION 3/4°@ 1702', 1°@ 3174'

PLUGGING REPORT 30 sx Rat, 15 sx Mouse

RESERVE PIT 500 bbls., Chl. 68,000 Ca. 560

DRILL STEM TESTS

NO	INTERVAL	IFP/TIME	ISIP/TIME	FFP/TIME	FSIP/TIME	IHP/FHP	RECOVERY
1							
2							
3							
4							
5							
6							
7							
8							

hole

MUD RECORD

CHK	DEPTH	WT	VIS	FIL	CHL	YP
1	3017'					
2	3019'	8.6	70	8.0	4.5k	16
3	3220'	8.6	50			
4	3429'	8.8	54	8.8	5k	9
5	3510'	8.8	47			
6	3610'	9.0	51			
7	3740'	9.0	50			
8	3875'	8.9	52	8.8	5k	10
9						
10						
11						

Displaced
LCM 6#

LCM 4#

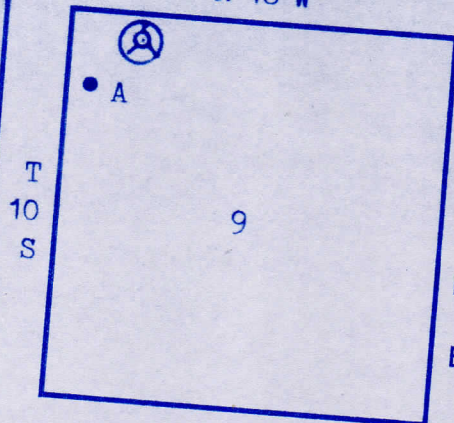
LCM 4½#

BIT RECORD

NO	SIZE	MAKE	TYPE	DEPTHOUT	FEET	HOURS
1	7 7/8"	Varel	Rock	1540'	1540'	33
2	7 7/8"	HTCo	GX20C	3174'	1634'	49 ½
3	7 7/8"	HTCo	GX20C	3875'	701'	32 ½
4						
5						
6						

FORMATION TOPS & STRUCTURAL GEOLOGY

R 18 W



REFERRED TO:

A: PETROLEUM MANAGEMENT, INC
H. Williams #1 SW NW NW 9

B: _____

C: _____

D: _____

E: _____

STRATIGRAPHIC

SUBJECT WELL

STRUCTURAL POSITION

MARKERS

SAMPLES

E. LOGS

DATUM

A

B

C

D

Anhydrite		1580'	+ 613		
Topeka	3154'	3154'	- 967	- 967	
Heeb. Sh.	3372'	3370'	-1177	-1177	
Toronto	3391'	3388'	-1195	-1195	
Lansing	3414'	3412'	--1219	-1219	
BKc.	3638'	3636' →	-1443	-1444	
Arbuckle	3761'	3755' →	-1562	-1561	
TD	3875'	3875' →	-1682	-1568	

*Structural position of subject well as compared to referred

7

8

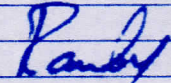
SUMMARY

The Paul H. Williams #2 well was drilled with D
Drilling tools rig #4 beginning 8-16-2019 and d
was completed 8-22-2019.

The well is an OWWO to be deepened for a SWDW.
drilled out of the old hole @ 1702' and new hol
then drilled to TD and casing set and cemented.

The Arbuckle will be open holed to a new TD and
to make a high quality SWDW.

Respectfully,



Randall Kilian

Randall Kilian examined sample cutting from the
hole.

ON

E

d well.

Discovery
rilling.

The well
e was

acidized

new

REMARKS

LITHOLOGY (LAGGED)

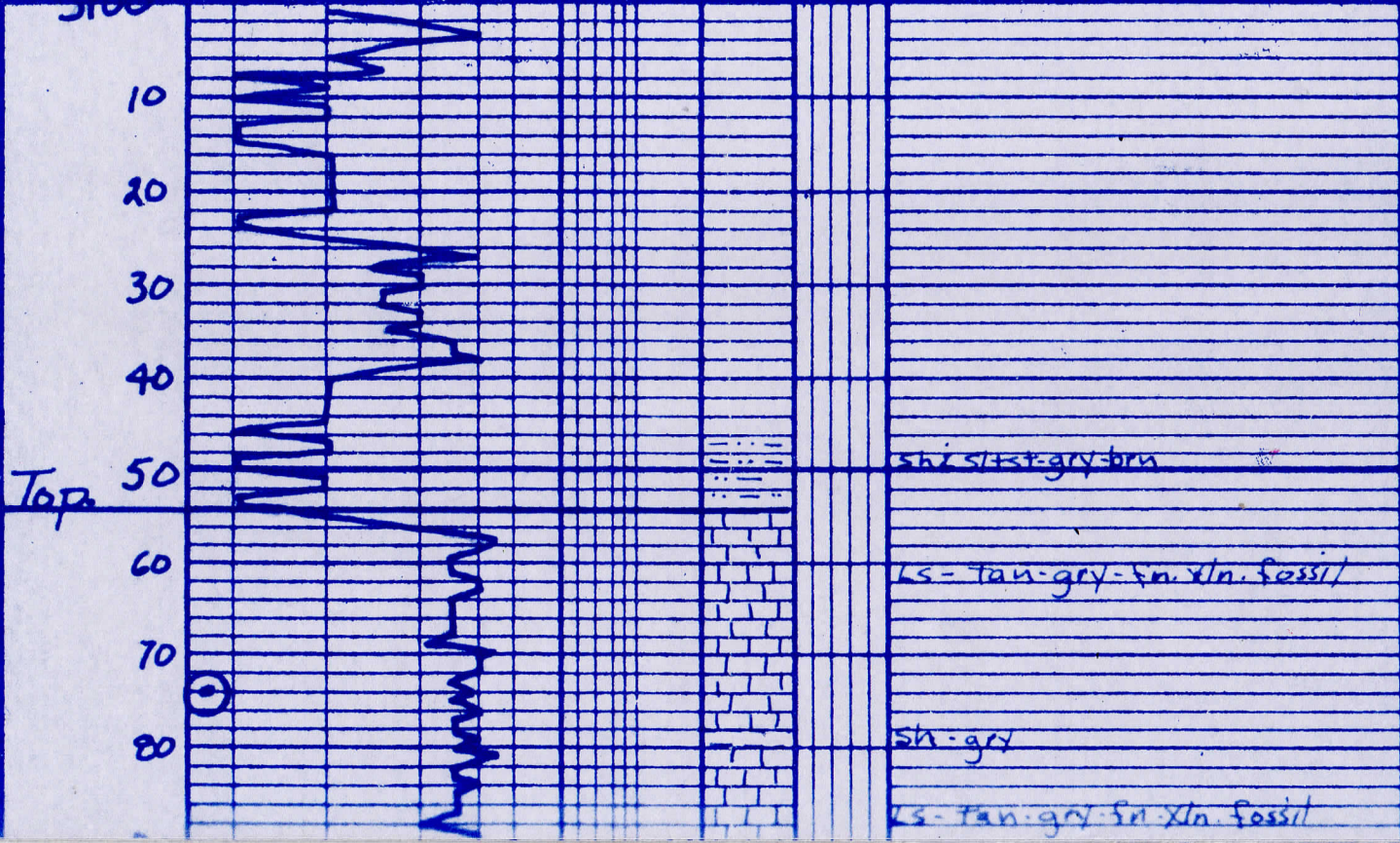
SHOWS
POOR
FAIR
GOOD
DST

DRILLING TIME (min/ft)

1/2 1 2 3 4 5 6 7 8 9 10

3100

7111 000



Mud
Vis. - 70 YP - 16
wt. - 86 CHI - 45K
WV - 80 XCM - 6#

Top

BIT TRIP
dev 1°
Strop .94' long.

sh. siltst. gry-brn

ls. tan-gry. fm. Xln. fossil

sh. gry

ls. tan-gry. fm. Xln. fossil

40 300 10 20 30 40 50 60 70 80 90 3300 10

sh. dark gry

stst - gry-brn.

ls - tan-gry-fn. xln. fossil.

ls. alk

ls - tan-fn. pool & com w/ good
20M of st. or st. in p.

sh - blk. fissile

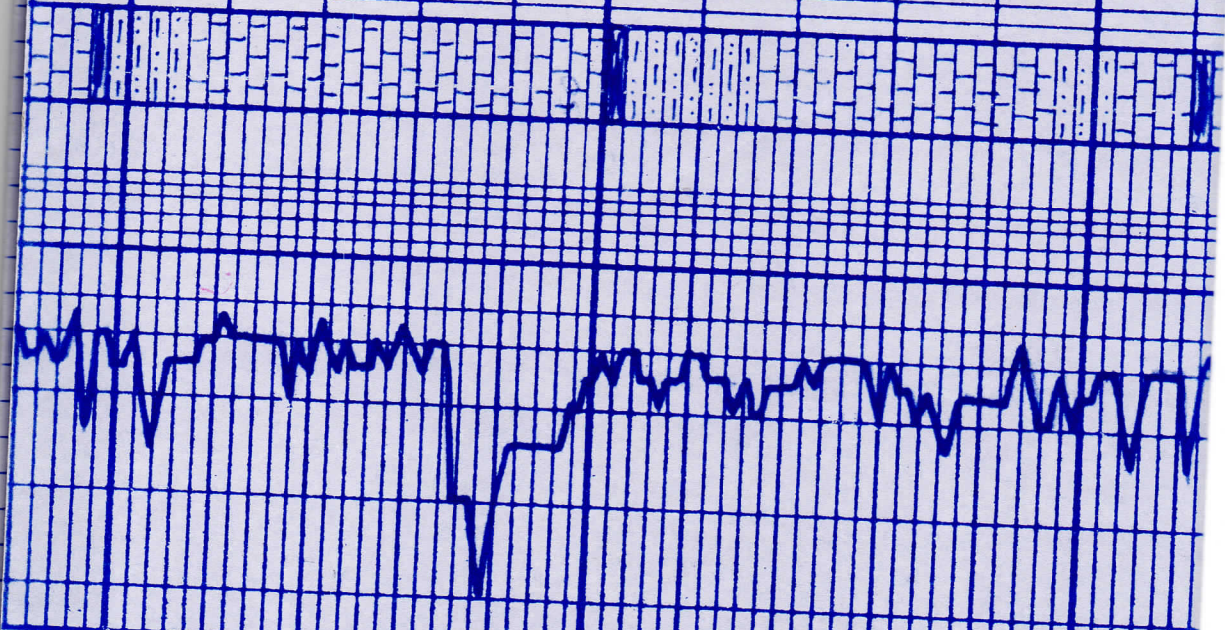
sh. stst - gry-brn.

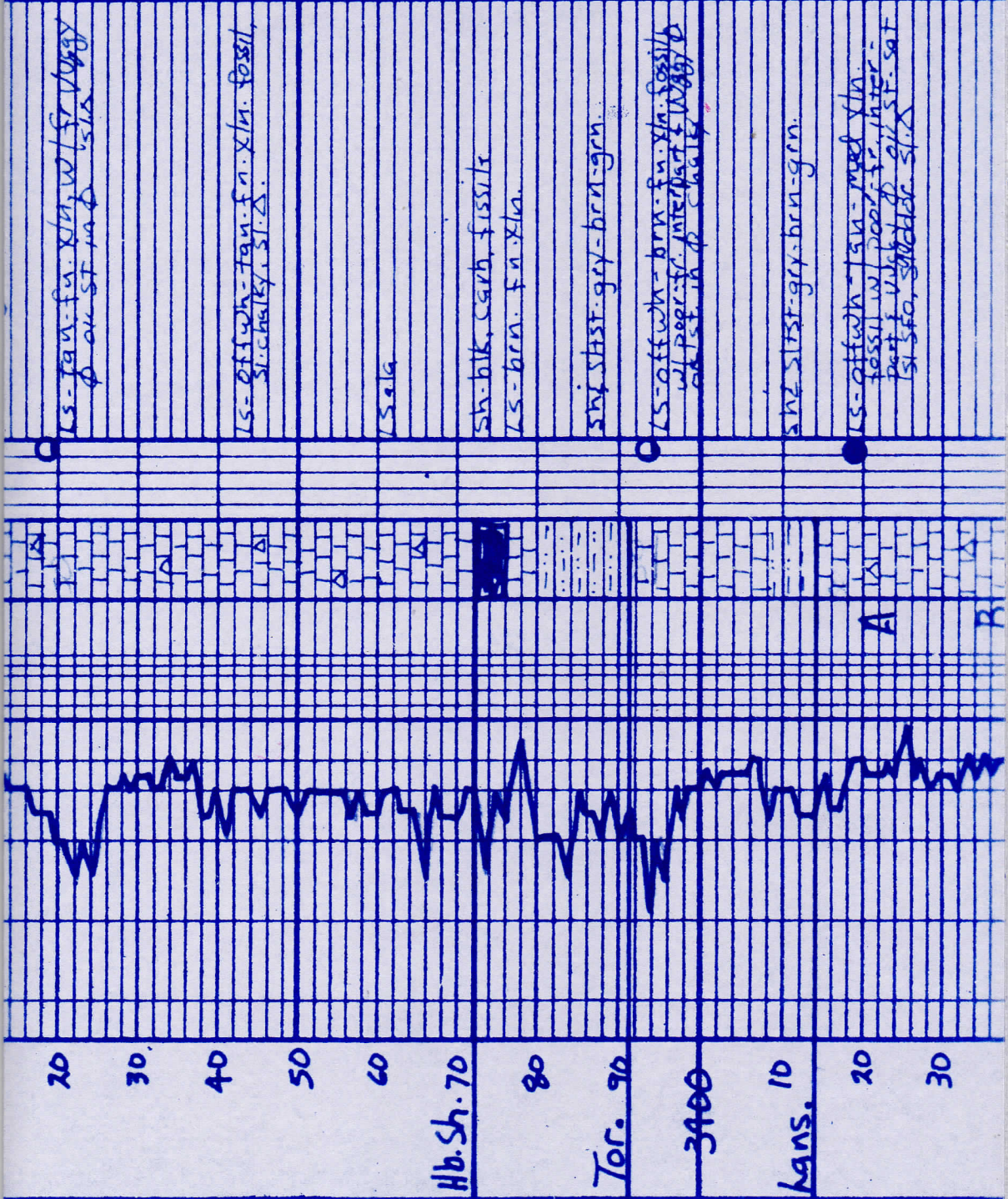
ls - o. blk - tan fn. xln.
fossil. sl. chalky

stst - gry

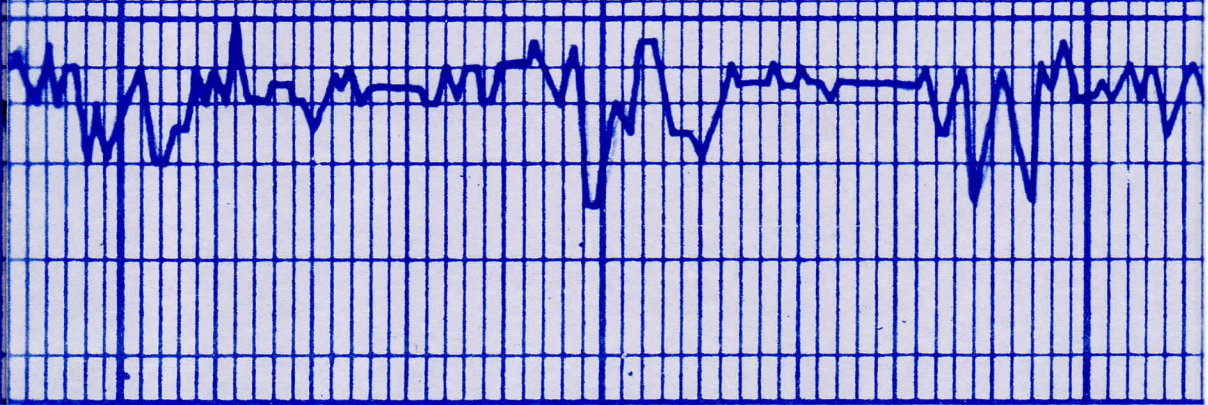
sh. dark gry

M. 2d
V. 15. - 50
wt. 8.6





40 50 60 70 80 90 3500 10 20 30 40 50 60



C D E F G H

Sh-dark gry
SIST-gry-grn.

LS-st dolo = offwh-bkn-fn.
No fossil. ool wt popr-fr.
interact ool st. la p.
St. in p. TLE st.
sh-dark gry.

SIST-gry-brn-grn.

LS-dolo-fn. Xln fossil
w/ poor interact p. st.
St. in p. TLE st.
sh-dark gry.

LS-st dolo-fn. Xln. ool wt
poor interact p. eis st. sat.
Shodor.

ShSIST-gry-brn-grn.

LS-offwh-fn. Xln. ool wt
poor oom p. N.S

LS-offwh-fn. Xln. TLE gry.
fn. Xln. ool. SIA gry.

Sh-blk

ShSIST-gry-brn-grn.

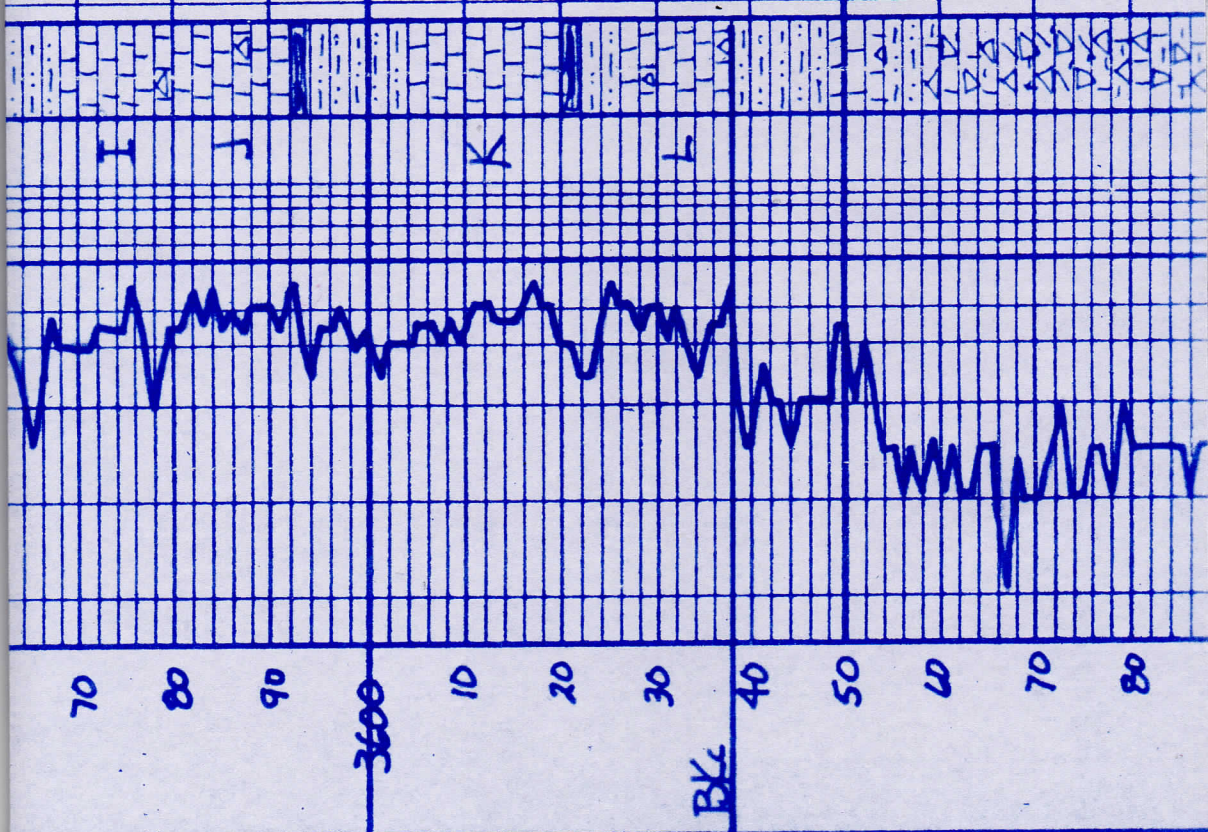
LS-fn-fn. Xln. fossil wt
poor fr. interact p. ool st.
SIF. Shodor.

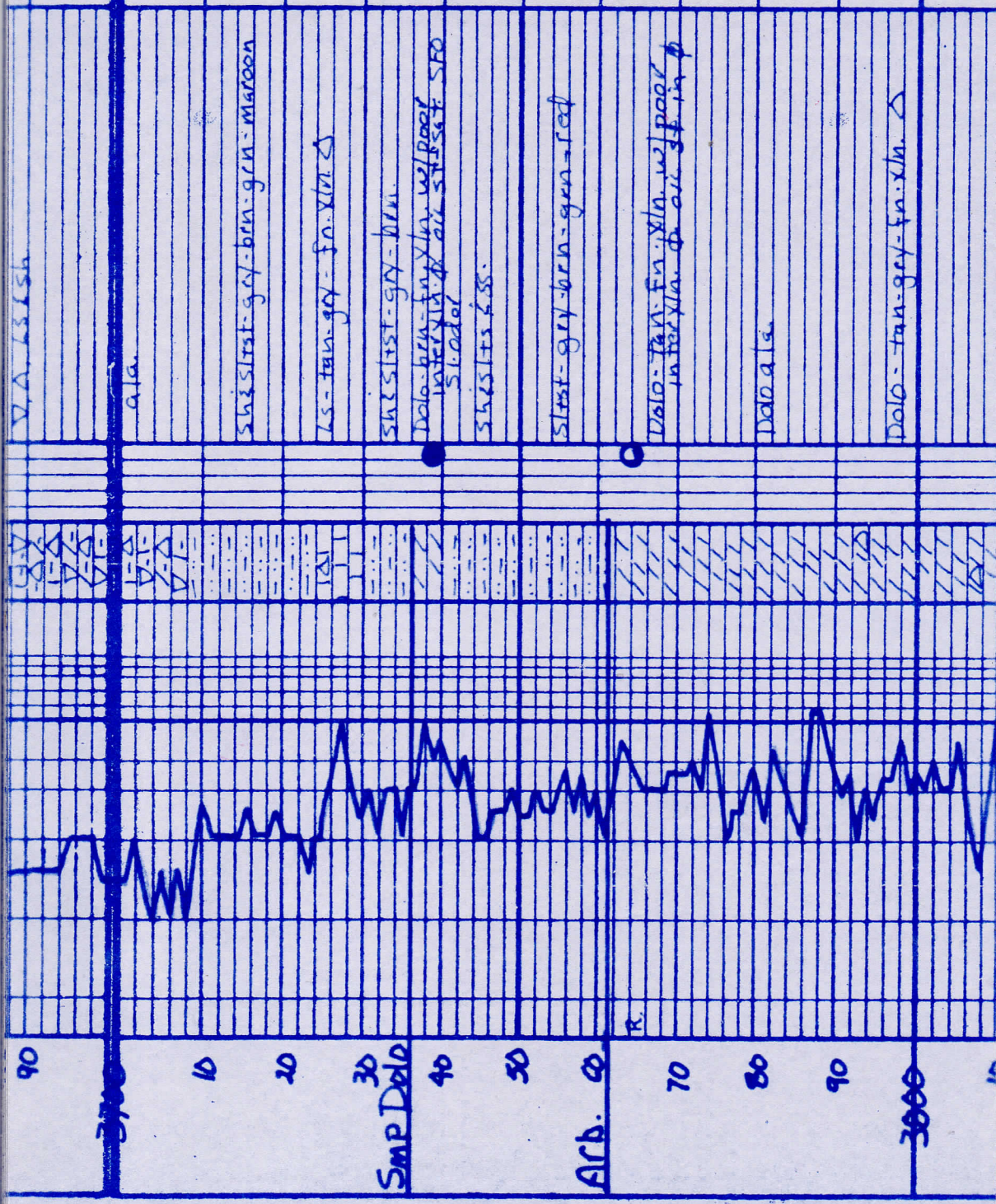
Mud
Vis. 47
wt: 8.8

sh-siltst-gry-brn-grn.
 ls-orthoh-fan-grn-sh-xln.
 ls-orthoh-fan-grn-sh-xln. odd fossil w/ for interpart of o/s st. in sli. odor.
 sh-blk. carb.
 sh-siltst-gry-brn-grn.
 ls-orthoh-fan. fine fossil w/ piece inter fossil & v. m. sh. o/s st. sli. odor
 sh-blk. fissile
 ls-orthoh-fan-sh-xln. sli. s.
 sh-siltst-gry-brn-grn. maroon
 ls-brn-sh-xln. Δ
 Δ, V, w/ ls & dol. fragments & v. m. sh.
 a la w/ sli. st. in V, sli. odor

Mud
 Vis. - 51
 wt. - 9.0

wash nod





Mud
Vis. 50
WT. 9.0

V.A. L.S. Lsh

Data

Sh. Stst - grey-brn-grn - maroon

Ls - tan-grey - fn. xln. Δ

Sh. Stst - grey-brn

Dolo - brn - fn. xln. w/ pool interxln. & air stst. SFO S. odor

Sh. Stst. S.S.

Stst - grey-brn-grn - red

Dolo - tan - fn. xln. w/ pool interxln. & air stst. in φ

Data

Dolo - tan-grey-fn. xln. Δ

90

3700

10

20

30

SMP Dolo

40

50

Arb. 60

R.

70

80

90

3000

Dato 9/9

Dato - Ton - Hg - Fr - In - Δ

Dato 9/9

Mud
Vis: 64
WT: 90
KCM: 6 #

Mud
Vis: 52 Y.P. - 10
WT: 89 C.M. - 5K #
WL: 8.8 KCM. 4 1/2

