



Scale 1:240 (5"=100') Imperial
Measured Depth Log

Well Name: Stanberry #1
API: API: 15-135-26070
Location: 35-19S-22W
License Number:
Spud Date: 06/28/19
Surface Coordinates: 1060' FSL, 650' FEL
Region: Ness Co., KS
Drilling Completed: 07/06/19
Bottom Hole
Coordinates:
Ground Elevation (ft): 2280
Logged Interval (ft): 3700 To: 4500
Formation: Mississippi
Type of Drilling Fluid: Chemical
K.B. Elevation (ft): 2287
Total Depth (ft): 4500

Printed by MUD.LOG from WellSight Systems 1-800-447-1534 www.WellSight.com

OPERATOR

Company: White Exploration, Inc.
Address: 1635 N Waterfront Pkwy, Ste. 100
Wichita, KS 67206

GEOLOGIST

Name: Andrew White
Company: White Exploration, Inc.
Address:

Remarks

Due to DST results and structural position, casing was run on the Stanberry #1 to test the Mississippi.

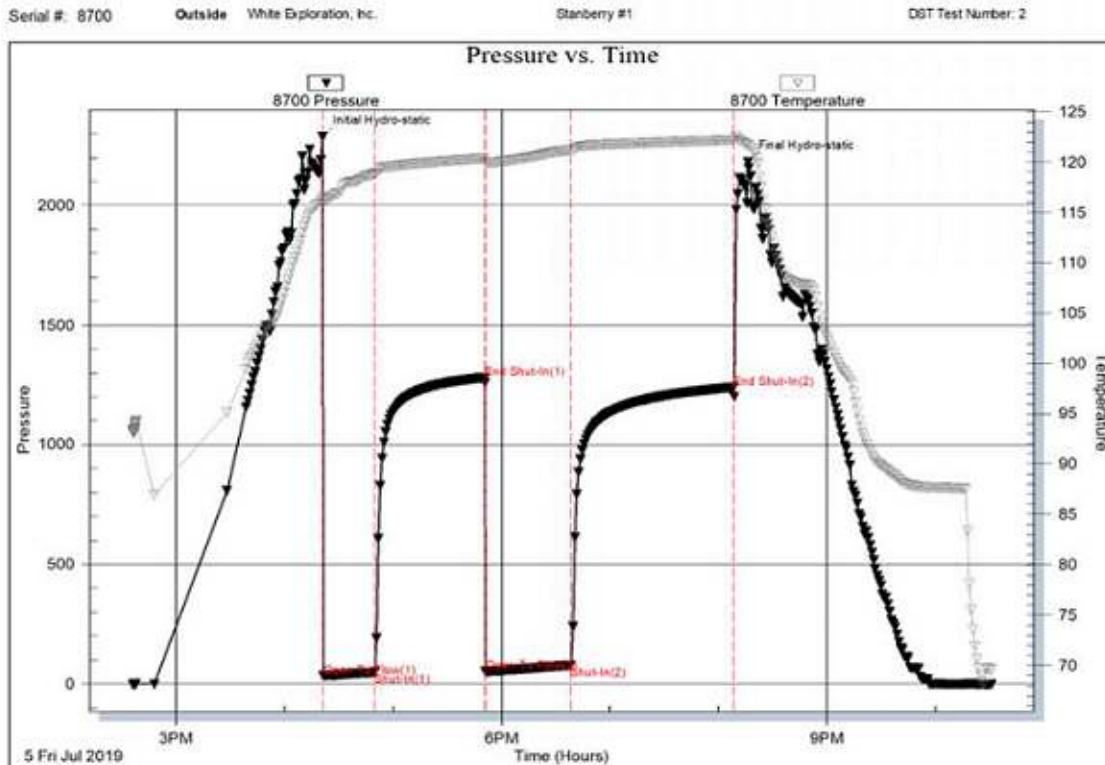
General Info

Drilling Contractor: Pickrell Drilling, Rig #10
Logs: ELI Wireline Services
Compensated Density/Neutron, Dual, Micro, Sonic
Drilling Mud: Mudco/Service Mud, Inc.
DST: Trilobite
Surveys: 265'-.75, 4086'-.5, 4420'- 1, 4500'-1

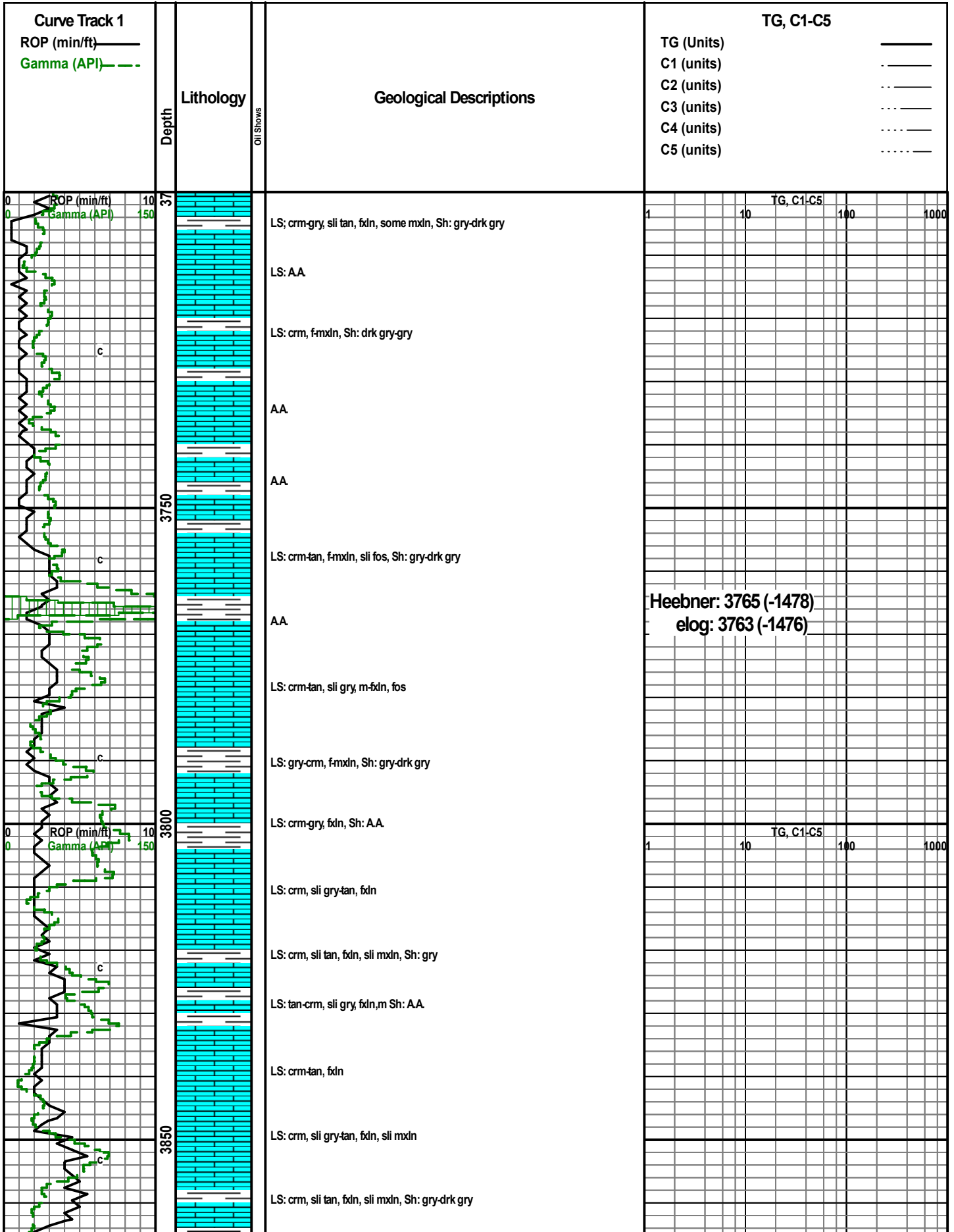
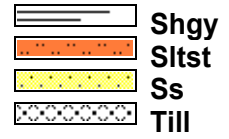
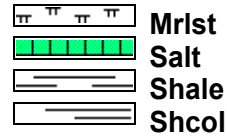
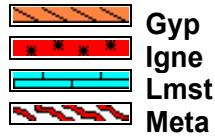
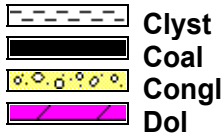
Daily Status

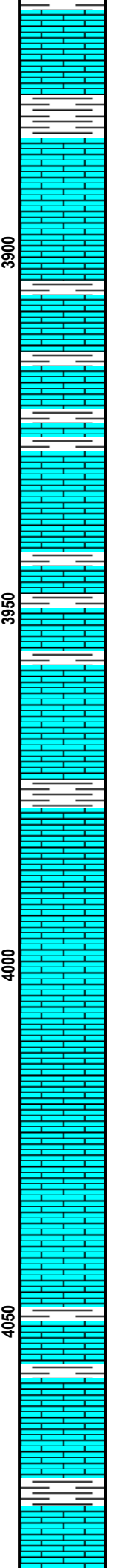
06/28/19: Spud Well @12:00 P.M. Drill to 265, run 6 joints new 8-5/8" surface casing set @ 255, cemented with 170 sacks of 60/40 Poz mix, 3%CC, 2% gel.
06/29/19: Drilling out from under Surface
06/30/19: Drilling ahead @ 1761'
07/01/19: Drilling ahead @ 2703'
07/02/19: Drilling ahead @ 3337'
07/03/19: Drilling ahead @ 3885'
07/04/19: TIH with bit #2
07/05/19: TOH for DST #1
07/06/19: Circulating hole @ 4500'

White Ex				The Reach Group		Tom Kat, Inc.		Sinclair		Mustang	
Stanberry				Moore #1		Ficken #1		Anna Williams#4		Miller Mossburgh	
35-19S-22W				35-19S-22W		35-19S-22W		36-19S-22W		34-19S-22W	
1060' FSL, 650' FEL				C SW SE		C SE NE		CNW SW		1120' FSL, 190' FEL	
KB: 2287				KB: 2285		KB: 2282		KB: 2267		KB: 2287	
Sample	Log	Datum		Relationship		Relationship		Relationship		Relationship	
Stone Corral	1512	1514	773	+4		-1		-4		+13	
B. Stone	1554	1550	737	+4		-3		-6		-4	
Heebner	3765	3763	-1476	0		-6		+3		0	
Stark	4072	4065	-1778	+12		-2		-5		+2	
BKC	4128	4126	-1839	+3		+4		-4		-1	
Cherokee	4343	4338	-2051	+14		+1		+8		+3	
Mississippi	4417	4417	-2130	+17		+2		-4		0	



ROCK TYPES





LS: crm, sli gry, fxdn, sli mxln, Sh: gry

Sh: gry-drk gry, LS: crm, m-foxn, sli fos

AA

LS: crm, sli gry, mcr-foxn, sli fos, Sh: gry

LS: crm, sli tan, mcr-foxn, sli fos, sli chalk, Sh: gry-ft gry

LS: crm, sli tan, fxdn, sli mcr, sli fos, sli chalky, Sh: gry-drk gry

LS: AA

LS: crm, sli tan, fxdn, sli mcr, sli fos, sli chalk

AA with Sh: gry-drk gry-grm, sli ft gry slit

LS: crm, sli tan, mcrxln, chalky, Sh: AA

AA

LS: crm-gry, mcrxln, sli fos, Sh: gry-drk gry

LS: AA

LS: crm-gry, mcrxln, sli chalk

LS: gry-crm, mcrxln, sli fos

LS: AA some Sh: gry-ft gry

LS: crm, mcr-foxn, some ool, chalky

LS: AA

LS: crm-gry, sli tan, mcrxln, some fxdn, ool, sli chalky, Sh: gry

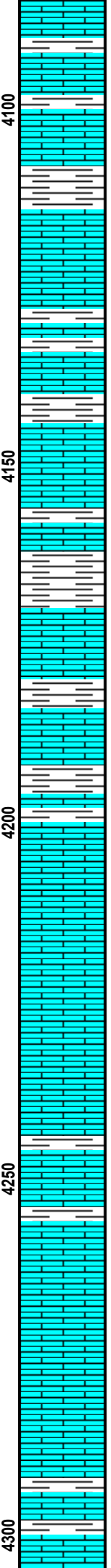
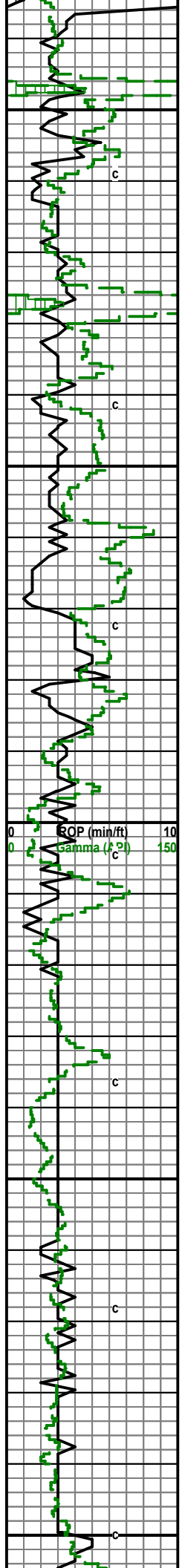
LS: crm-gry, sli tan, mcrxln, cherty, ool, Sh: gry-drk gry

Mudco mdchk
 Wt: 9.15 Vis: 45
 pH: 10.5 Fil: 9.6
 LCM: 1#

TG, C1-C5

1 10 100 1000

Stark Shale: 4072 (-1785)
elog: 4065 (-1778)



LS: crm-gry, sli tan, mcrxn, sli fxdn, sli fos, sli chalky, Sh: gry-lt gry, some grn

LS: crm-gry, mcrxn, sli chalky,

LS: AA

LS: crm-gry, mcrxn, sli chalky, Sh: gry-drk gry

LS: crm-tan, mcrxn, chalky, sli fos

LS: gry-crm, mcrxn, chalky, Sh: gry-lt gry, sli drk gry

LS: crm-gry, mcrxn, sli fxdn, sli cherty, sli chalky, Sh: gry

LS: gry-crm, mcrxn, some fxdn, chalky, Sh: gry-drk gry

LS: AA with Sh: gry-lt gry,

LS: gry, sli crm, mcrxn, Sh: gry-lt gry, sli drk gry

LS: gry-crm, sli tan/brwn, mcrxn some fxdn, sli fos, sli chalky, Sh: gry-lt gry

LS: crm-gry, sli tan, mcrxn, few fxdn, couple pieces sandy,

LS: crm-gry, mcrxn, sli cherty

LS: AA sli chalky

LS: gry-crm, mcrxn, sli cherty, sli chalky, some Sh: gry-lt gry,

LS: gry/crm, mcrxn

LS: gry-crm, mcrxn, chalky

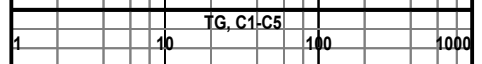
Sh: gry-drk gry, some lt gry, LS: AA

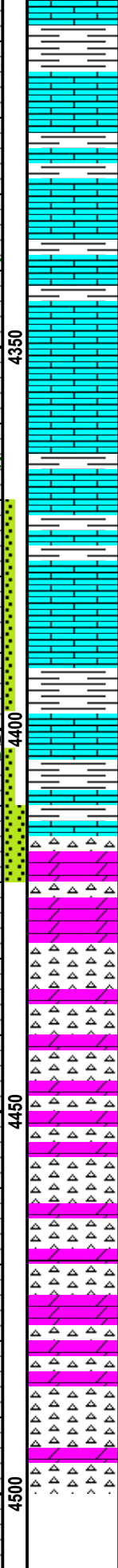
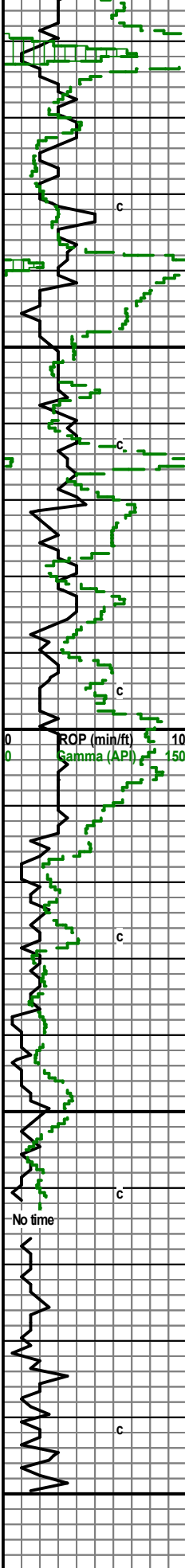
BKC: 4128 (-1841)
elog: 4126 (-1839)

elog Marmaton: 4170 (-1883)

elog Pawnee: 4235 (-1948)

Mudco mdchk
Wt: 9.2 Vis: 56
pH: 9.5 Fil: 8.8
LCM: 1#





Sh: gry-drk gry-blck some LS: crm-tan, fxl, sli sandy, pos dead oil, pos sli odor, no fluor

Sh: blck-drk gry-gry

LS: crm-tan, mcrxln, chert, pr vis por, vssFO, sli odor, sli dull fluor, show dead oil

LS: crm-gry, mcrxln, sli cherty,

LS: AA

LS: crm-gry, sli tan, mcrxln, few fxl, sli fos, Sh: gry-drk gry

LS: gry-crm, mcrxln

LS: crm, mcrxln, sli cherty, Sh: gry-lt gry-gm

LS: crm-gry, mcrxln, Chert yellow

LS: crm, sli tan, mcrxln, some fmxln, cherty, Sh: gry-lt gry-gm/blue

Dolo: crm, fxl, dense, fair odor, fair stain, SFO, dull yellow fluor, fair vis pp por,

Chert: crm, vit, dense. and Dolo: crm, fxl fair stain, SFO, yellow fluor, fair vis pp por

Mostly Chert: some Dolo: AA.

Chert: white/crm

Chert: AA some Dolo: crm, fxl, sli limey

Chert: crm, Dolo: crm, sli tan, fxl, sli chalky

RTD 4500

LTD 4500

Cherokee Shale: 4343 (-2056)
e log: 4338 (-2051)

Mississippian: 4417 (-2130)
e log: 4417 (-2130)

Mudco mdchk
 Wt: 9.35 Vis: 61
 pH: 10.5 Fil: 8.0
 LCM: 1#

DST #1 4410-4420
 Misrun

CFS 60 min

DST #2 4370-4420
 30-60-45-90

CFS IF: built to 8"
 FF: built to 13"
 Rec: 90' GIP, 90' CGO, 70' GHMCO (10%G, 40%M, 50%O)
 IFP: 32-49 ISIP: 1281
 FFP: 52-77 FSIP: 1240