

KEVIN L. KESSLER

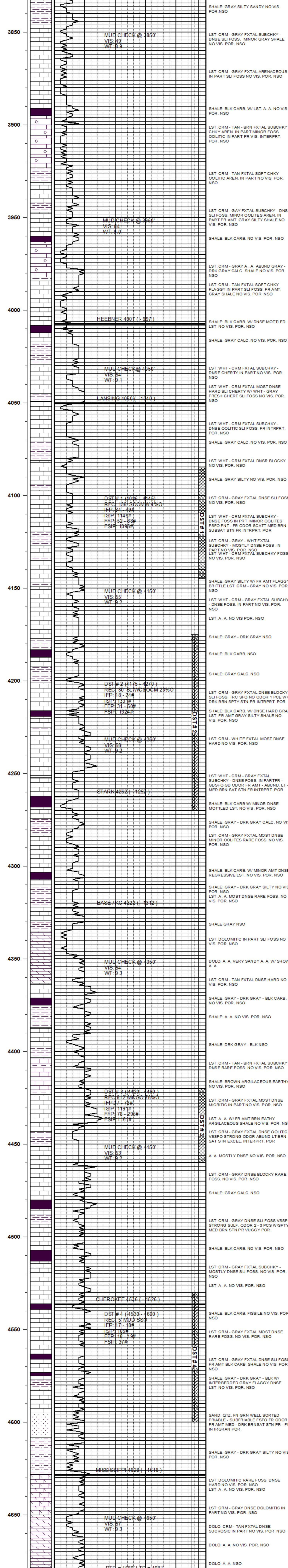
CONSULTING PETROLEUM GEOLOGIST

(316) 522 - 7338

OPERATOR : MULL DRILLING CO. INC.		ELEVATION	
LEASE : SCHIPPERS	WELL # : 1 - 33	KB: 3010'	
LOCATION : 1243' FSL & 1732' FWL		GL: 3005'	
SEC : 33	TWP : 10 S	RGE : 31 W	MEASUREMENTS FROM:
COUNTY : THOMAS	STATE : KANSAS		KB
CONTRACTOR: W W RIG # 8		CASING RECORD:	
COMM: 06 - 12 - 2019	COMP: 06 - 21 - 2019	SURFACE:	
RTD: 4680'	LTD: 4681'	8 5/8" @ 287'	
GEOLOGICAL SUPERVISION FROM: 3800'		PRODUCTION:	
SAMPLES SAVED FROM: 3800'		5 1/2" @ 4680'	

FORMATION:	TOP	LOG DATUM	TOP	SAMPLE DATUM	COMP.
HEEBNER	4007	- 997	4007	-997	+ 05
LANSING	4050	- 1040	4050	- 1040	+ 06
STARK	4262	- 1252	4262	- 1252	+ 06
BASE/KC	4322	- 1312	4322	- 1312	+ 04
CHEROKEE	4536	- 1526	4536	- 1526	+ 14
MISSISSIPPI	4628	- 1618	4628	- 1618	+ 18

REFERENCE WELL FOR STRUCTURAL COMPARISON:
ABERCROMBIE #1 MILLER 33-10S-31W THOMAS CO KS



COMMENTS :

5 1/2" PRODUCTION CASING WAS RUN TO FURTHER TEST THE PRODUCTIVITY OF THIS WELL

KEVIN L. KESSLER