

LITHOLOGY STRIP LOG

WellSight Systems

Scale 1:240 (5"=100') Imperial
Measured Depth Log

Well Name: VINCENT OIL CORP. SMITH 3-8 UNIT
API: 15-057-21012-00-00
Location: NW NE NE NW SEC 8-T29S- R22W
License Number: Operator # 5004
Spud Date: 6/01/19
Surface Coordinates: 167' FNL, 2,270' FWL
Region: Kingsdown NW
Drilling Completed: 6/11/19

Bottom Hole
Coordinates:
Ground Elevation (ft): 2,509' K.B. Elevation (ft): 2,521'
Logged Interval (ft): 4,250' To: 5,335' Total Depth (ft): 5,335'
Formation: Mississippi
Type of Drilling Fluid: NATIVE MUD TO 3,794'. CHEMICAL GEL TO RTD

Printed by MUD.LOG from WellSight Systems 1-800-447-1534 www.WellSight.com

OPERATOR

Company: VINCENT OIL CORP.
Address: 200 W. DOUGLAS AVE #725
WICHITA, KANSAS 67202-3013
OFFICE; 316-262-3573

GEOLOGIST

Name: Jame R. Hall (Well Supervision)
Company: Black Gold Petroleum
Address: PO BOX 66
VALLEY CENTER, KANSAS 67147-0066
316-217-1223

Comments

Drilling contractor: Duke Drilling, Rig #1, Tool Pusher: Mike Godfery.

Surface Casing: 8 5/8" 23# set at 691' with 275 sxs, cement, did circulate.

Daily Activity: @07:00 hrs.

6/1/19: Move on and spud with 12 1/4" bit.

6/2/19: 691'. Drilled surface hole to 691', ready to run cement.

6/3/19: 1,493' drilling. Wait on cement 8hrs. prior to drilling out and drilling ahead.

6/4/19: 2,720' drilling with native mud.

6/5/19: 3,410' drilling with native mud.

6/6/19: 4,005' drilling with chem gel mud.

6/7/19; 4,640' drilling.

6/8/19; 5,020' drilling.

6/9/19; 5,255' drilling, cir Pawnee @ 5108', cir B/Penn @ 5,229', cir Chert @ 5,246'.

6/10/19; 5,303' cir Miss., cir Miss @ 5,260', cir Miss @ 5,278', DST 1 Miss 5,253' - 5,278'.

6/11/19; 5,335' open hole logs. cir Miss @ 5,303', DST 2 Miss 5,281 - 5,303, pipe strap 3.13' short to the board, drilled to RTD (5,335') conditioned hole trip out to run open hole logs.

Deviation Surveys: 0.5 deg. @ 691', 0.75 deg. @ 1,204', 1.0 deg. @ 1,573', 0.75 deg. @ 2,125', 1.0 deg. @ 2,630', 0.75 deg. @ 3,153', 1.0 deg. @ 5,278',

Bit Record:

#1 12 1/4" RR out @ 691'.

#2 7 7/8" BD526 in @ 691' out @ 5,278'

#3 7 7/8". HE28 in @ 5,278' out @ 5,335'

Drilling time commenced: @ 4,200'. Maximum 10' wet and dry samples commenced: @ 4,250' to RTD. Samples delivered to Kansas Geological Sample Library at Wichita, Kansas.

Gas Detector: Blue Stem unit #5154. Digital Unit, commenced @ 4,200'.

Mud System: Mud-Co/Service Mud. Chemical Gel system @ 3,794', Mud Engineer: Matt smith, Jason Whiting, and Justin Whiting (Dodge City Office).

Open Hole Testing; Trilobite Testing, Chris Hagman.

Open Hole Logs: ELI Logging, Hays Kansas,

Logging Engineer: xxxxxxxx.

DIL, CDL/CNL/PE, MEL/SON.

Sample tops are placed on this Plotted Geo. Report, with the reference wells "A" & "B" . E-log tops datum differences shown.

This log must be shifted by x' to x' for correlation purposes with the open hole E-logs. RTD is x,xxx', open hole E-log depth is x,xxx'.

DSTs

DST #1 Miss. 5,253-5,278' (25'), 30-60-60-120, IH 2674, IF 55-68; BOB 2min, building to 243", ISI; 488; no blow, FF; 59-136; BOB ASAO, GTS 35min, 40min 12.28Mcf, 50min 13.9Mcf, 60min 15Mcf, FSI; 489: blow in 3min build to 2.1", FH 2604, Rec: 220' wrty, mdy, gsy oil (50% gas, 35% oil, 5% water, 10% mud), BHT 121 F. Oil gravity 29.

DST #2 Miss. 5,281-5,303' (22'), 30-60-60-120, IH 2673, IF 20-29; BOB 25min, building to 13.2", ISI; 477; no blow, FF; 25-36; BOB 10min, building to 40", FSI; 483: no blow, FH 2589, Rec: 30' oily watery mud (40% oil, 10% water, 50% mud), BHT 115 F.

Qualifiers

CARBONATE CLASSIFICATION:

AFTER DUNHAM: GRAIN; any fossil, fossil fragment, sand grain, or other rock fragment within the rock.

MUDSTONE; muddy carbonate rocks containing less than 10% grains. **WACKSTONE;** mud supported

carbonate rocks with more than 10% grains. **PACKSTONE;** grain supported muddy carbonate rocks.

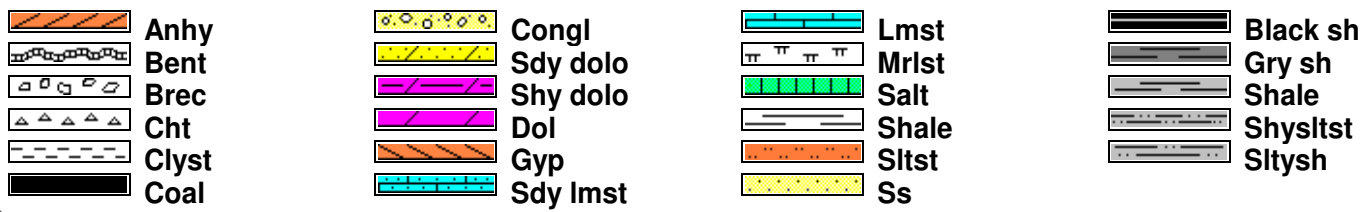
GRAINSTONE; mud free carbonate rock, grain supported. **BOUNDSTONE;** carbonate rock bound together at

deposition (coral, etc.). **CRYSTALLINE CARBONATE;** carbonate rock retaining to little of their depositional

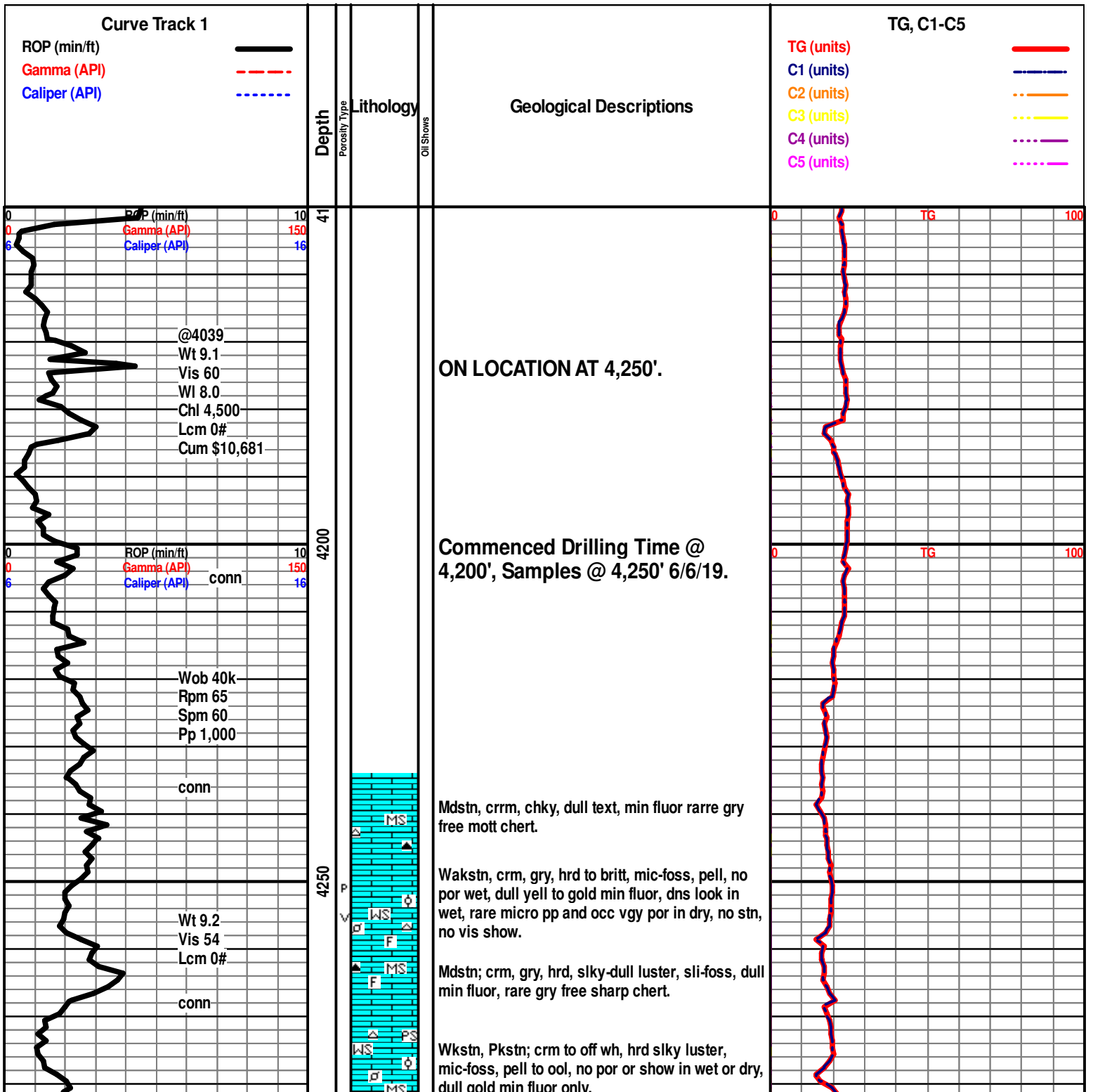
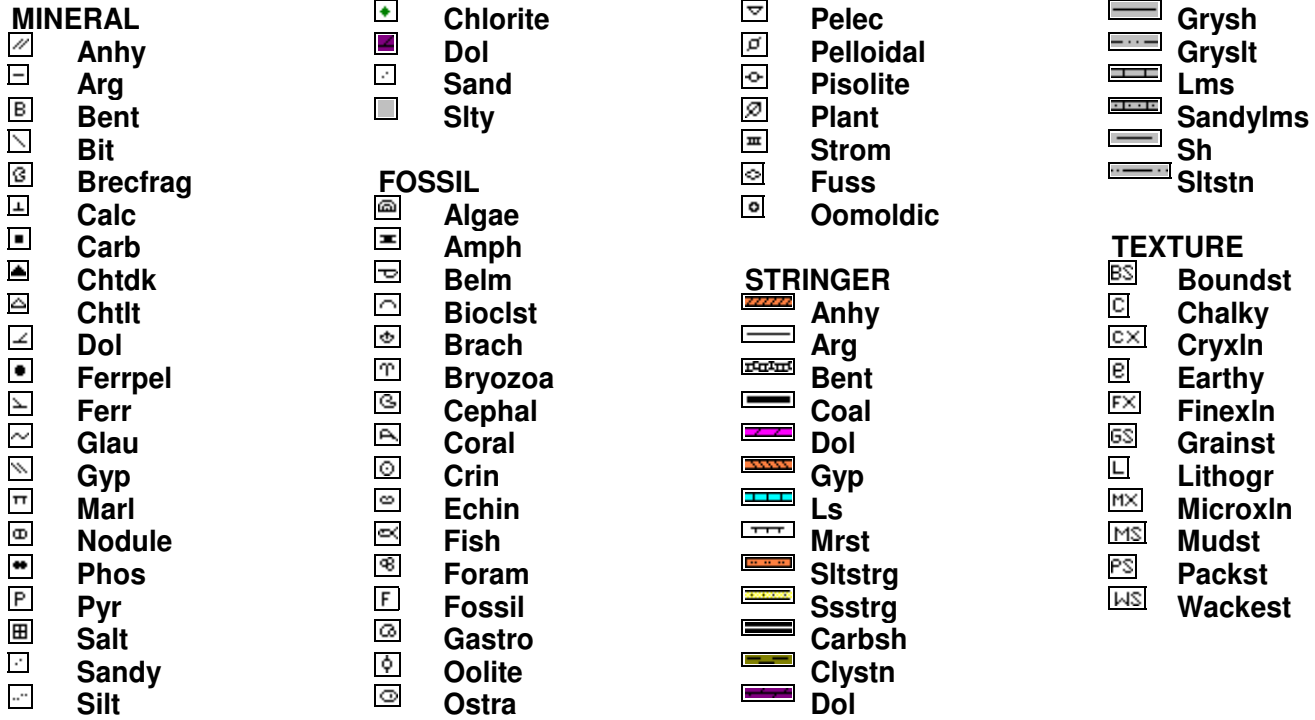
texture to be classified.

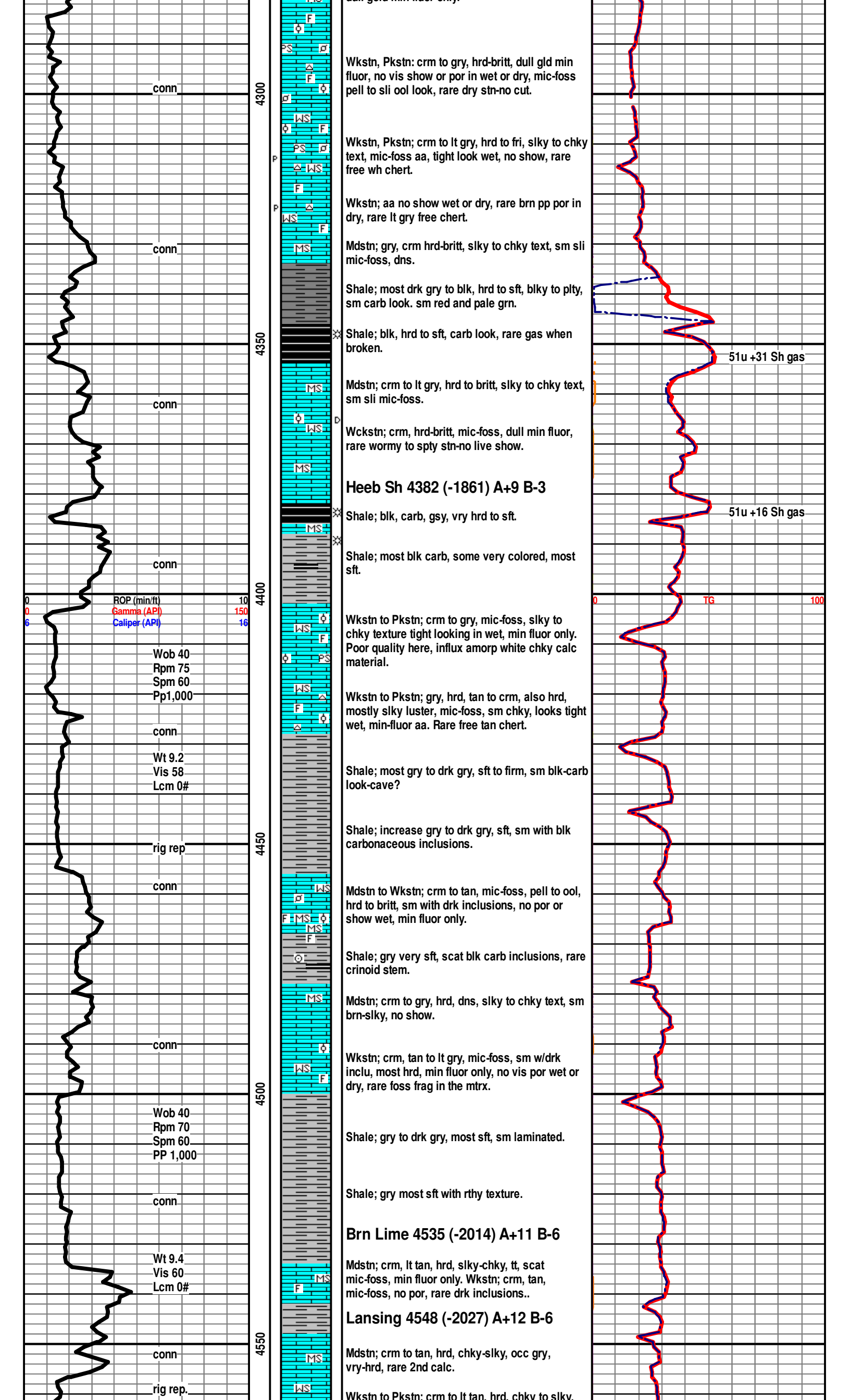
Qualifiers; (Fossils, Minerals, Shows, Porosity, etc.) Rare = less than 1% of sample total, Trace = less than 5% of sample total, Greater than 5% an estimate of total percentage.

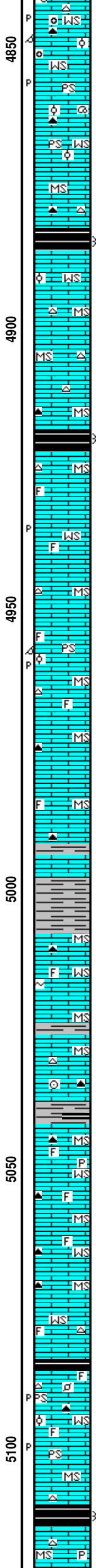
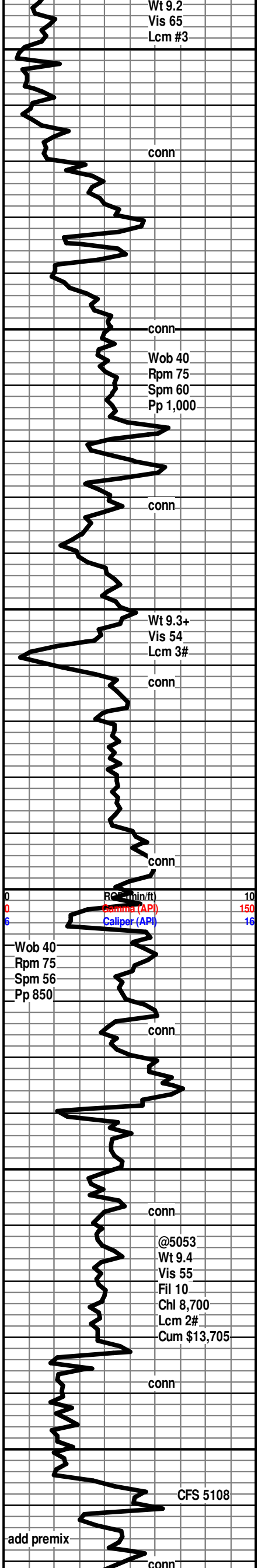
ROCK TYPES



ACCESSORIES







Wkstn to Pkstn; aa, no show when broken, rare med size ool and oom in a gry mtrx, friable, no show.

Wkstn to Pkstn; aa, dull min fluor only, no show wet or dry sample, Chert aa lt to drk, rare free gastro.

Mdstn; crm to tan hrd-britt, some off wh chky-sft, influx brn vhrd, silky, dns.

Stark Sh 4884 (-2363) A+7 B-7

Shale; blk-carb, no visable gas when broken.

Wkstn; off wh-chky, mic-ool, sft, dull gold min fluor only, no show.

Mdstn; crm to tan, gry, silky to chky, sm mic-foss, brn-silky vhrd, scatt off wh very sft chky.

Mdstn; brn to tan, hrd to britt, off wh-chky and sft, Wkstn; scatt, sm brn hrd silky, mic-foss, tt, dull gold min fluor only

Hush Sh 4919 (-2398) A+8 B+3

Mdstn; influx brn, silky, vhrd, dns.

Wkstn; scatt in sample, off wh, chky, sft to britt, mic-foss, no show, dull gold min fluor only, rare pp por in dry-no stn.

Mdstn; crm to tan, sm gry, chky to silky text, most hrd, free chert, wh to opq.

Pkstn; brn to tan, mic-foss, vf-ool and pell, most in hrd silky dns mtrx, dns looking, rare brn pp & oom por, NS.

Mdstn; crm to tan, hrd frm, silky to chky text, dns, occ mic-foss, dull min fluor, free rare lt gry chert.

Mdstn; crm to tan, off wh-chky-sft, brn-silky vhrd, rare drk gry to brn free chert, Shale: 10%, gry drk gry, sm blk-carb, cave?

Mdstn; inc in brn, vhrd, silky dns, blkly to tabular in shape, sm mic-foss. Shale aa.

Shale; gry to drk gry, pale grn, sm gry w/carb mat,

Marmaton 5008 (-2487) A+12 B+8

Mdstn; crm-tan, chky, gry chky-silky, most hrd to frm. Wkstn / Pkstn: rare off wh, w/foss frag in tt mtrx, rare glauc, spty dk stn no cut.

Shale; slt increase here, gry, brn, plty, frm. free chert off wh, rare foss and spic in the mtrix.

Mdstn; crm-tan, off wh chky, brn, silky, dns, occ mic-foss in tt mtrx, free off wh to blk chert.

Mdstn: aa, Wkstn: small influx crm to off wh, mic-foss in tt chky mtrx, no show, free blk-bilky chert.

Wkstn; mic-foss, in tt chky to xln mtrx, dull min fluor only, rare free foss fragmt in tray, rare free pyr and drk chert.

Mdstn; crm to tan, most chky, britt to sft, min fluor only. Wkstn; crm, m-foss in tt chky mtrx, no show.

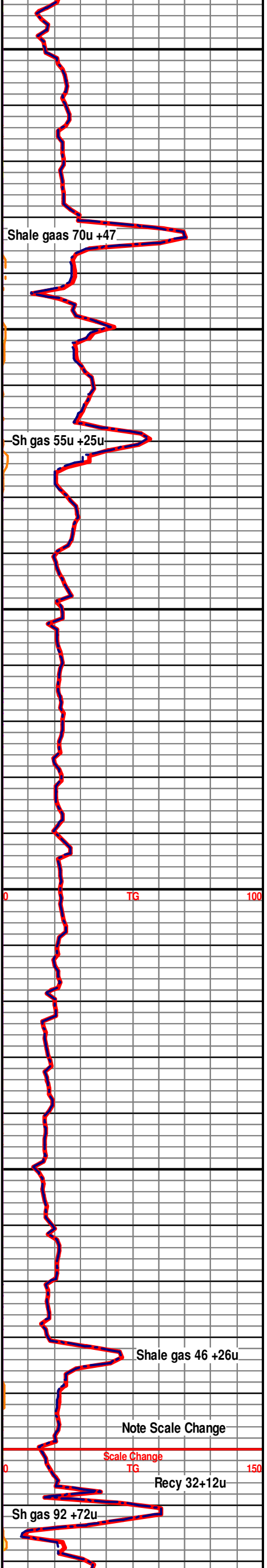
Pawnee 5085 (-2564) A+12 B even

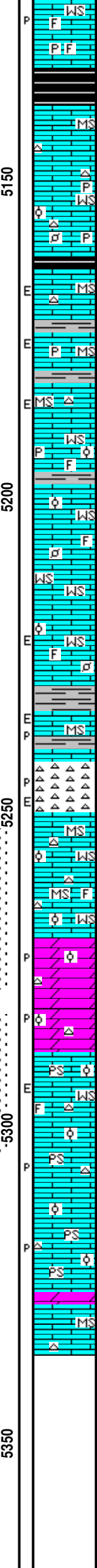
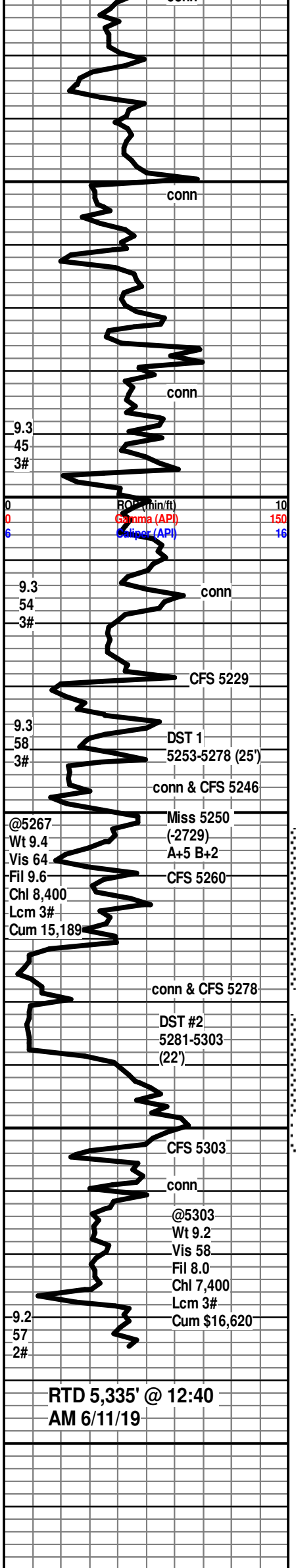
Shale; blk-carb, no gas when broken

Pkstn; off wh, frm to britt, mic-foss to mic-ool in chky mtrx, sm med to vf-ool in the tt looking mtrx, occ vis pell, no vis por in wet or dry, no show when broken. Most of sample is tan Wkstn; chky mtrx, mic-ool to pell, no show, rare brn pp por in dry.

Lab. Sh 5111 (-2590) A+12 B even

Mdstn; crm to tan most chky, brn-dns silky-xln mtrx, sample very poor after short trip.





Wkstn; brn to tan, hrd, silky text, mic-foss in tight xln mtrx, rare free pyr and chert. Rare brn pp por in dry, no stn.

CKE Sh 5133 (-2612) A+12 B-1

Mdstn; crm-tan, hrd-sft, most chky, sm xln hrd, sm vhrd gry with 2nd calc, rare free lt gry foss chert, flood carb shale here.

Wkstn; crm to gry, chky-sft to fcrm, silky-xln hrd to vhrd, mic-foss, ool-pell, tt mtrx, no show, dull gold to yell min fluor.

Mdstn; crm tan, chky to silky-xln, rare (4pcs) vry hrd dolo Mdstn with spty brn stn on wthrd edges, brt yell cut, no odor.

Mdstn; crm, chky to tan, rare samples aa with wthrd edges and scatt pp por, spty brn stn-inst cut, no odor, no free oil.

Mdstn; aa, rare show aa, influx brn silky-xln vhrd and dns, sm w/foss frag in the mtrx.

Most Mdstn aa, inc Wkstn, crm to gry, chky to xln, sm dns, mic-foss ool, tt looking mtrx, no show, rare pyr inclusions.

Wkstn; gry to crm and off wh, occ tan and brn, most with chky mtrx, mic-foss ool & pell, no show or vis por wet or dry.

Most aa; small influx pale grn sft shales.

Wkstn; crm to tan chky mtrx, mic-foss tt look, sm off wh with fine size ool, spty blk stn yell cut, sm tan chky with spty stn on edge and inst cut, no odor. Mdstn tan crm aa, most chky. Shale; blk, gry, occ pale grn aprox 10-15% in 60min sample.

Shale; vry colored, red, grn yell and gry.

Chert: bone white, opq, grn, sm with foss inclu, most fresh, trace with wthrd edges, 2 pcs with inst cut, sm vis por, no odor, no free oil.

Mdstn; crm to tan, chky most britt, Wkstn to Pkstn; crm to tan chky to silky, mic-foss, rare wh chky vf-ool in chky mtrx, rare glauc, no show. Chert aa, spty show, most fresh. Shale inc in vry colored - Cave?

Dolo: off wh to tan, friable, vvsuc, some have vfool look, some w/even lt brn stn-inst cut, some baren, stn sapmls have rainbow and odor when broken, no vis oil in tray, faint to fair odor in the samples.

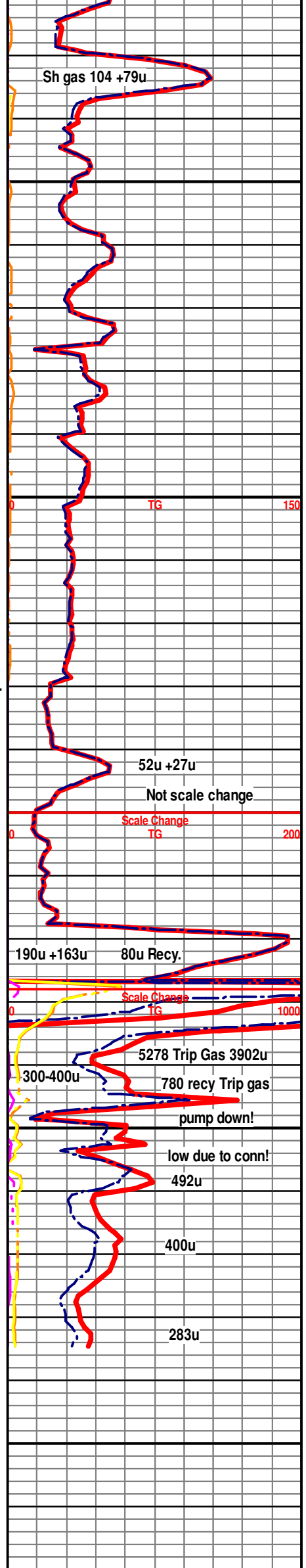
Dolo: 5279-5288 buff; frm-fri, slit inc suc xl size, sl ool, sm w/ even stn w/ bleed gas & oil inst cut, sm spty stn, slo mlky cut, sm no stn no cut, sm residual ring cut, rare por in the dry with no stn-wet?

Pkstn; crm-tan to off wh, sft-britt, chky to silky xln mtrx, vf-med ool in tt mtrx, rare pp por in dry, 1pc faint odor wh broken, no vis oil or gas, resid ring cut, no cut on sel pcs.

Pkstn; crm to off wh, chky to silky-xln looking mtrx, vf-med ool in tt looking mtrx, no show on sel pcs, rare pp por dry.

Dolo: small influx, lt tan, hrd vf-suc, min fluor only-no cut.

Mdstn; sl inc crm-tan chky mtrx, sm rare mic-foss, tt.



RTD 5,335' @ 12:40 AM 6/11/19