



# Musgrove

**PETROLEUM CORPORATION**  
Claflin, Kansas

## GEOLOGIST'S REPORT

### DRILLING TIME AND SAMPLE LOG

COMPANY K&N Petroleum, Inc  
 LEASE Ogle # 4  
 FIELD Finger  
 LOCATION SW-SE-NE-NE 1190'FNL & 430' FEL  
 SEC 12 TWSP 17S RGE 13W  
 COUNTY Barton STATE Kansas

#### ELEVATIONS

KB 1926'  
 DF \_\_\_\_\_  
 GL 1916'  
 Measurements Are All From KB

CONTRACTOR Southwind Drilling co. (Rig #8)  
 SPUD 08/07/2019 COMP 08/13/2019  
 RTD 3455' LTD 3454'  
 MUD UP 2606' TYPE MUD Chemical

CASING  
 SURFACE 8 5/8"@385'  
 PRODUCTION 5 1/2"@3453'

#### ELECTRICAL SURVEYS

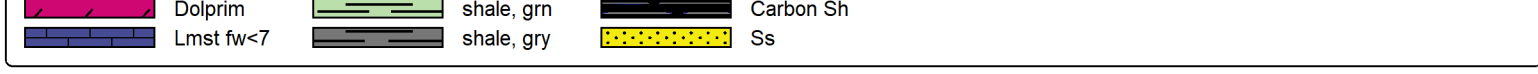
ELI Wireline  
 DUCP, MEL, DIL, CDL/CNL

SAMPLES SAVED FROM 2700' TO RTD  
 DRILLING TIME KEPT FROM 2700' TO RTD  
 SAMPLES EXAMINED FROM 2900 TO RTD  
 GEOLOGICAL SUPERVISION FROM 2900' TO RTD  
 GEOLOGIST ON WELL Jim Musgrove

FORMATION TOPS	LOG	SAMPLES
Anhydrite	810 +1116	
B. Anhydrite	838 +1088	
Heebner	3047 -1121	
Toronto	3063 -1137	
Douglas	3076 -1150	
Brown Lime	3136 -1298	
Lansing	3151 -1225	
BKC	3388 -1290	
Arbuckle	3396 -1470	
RTD	3455 -1529	

			X
	12		

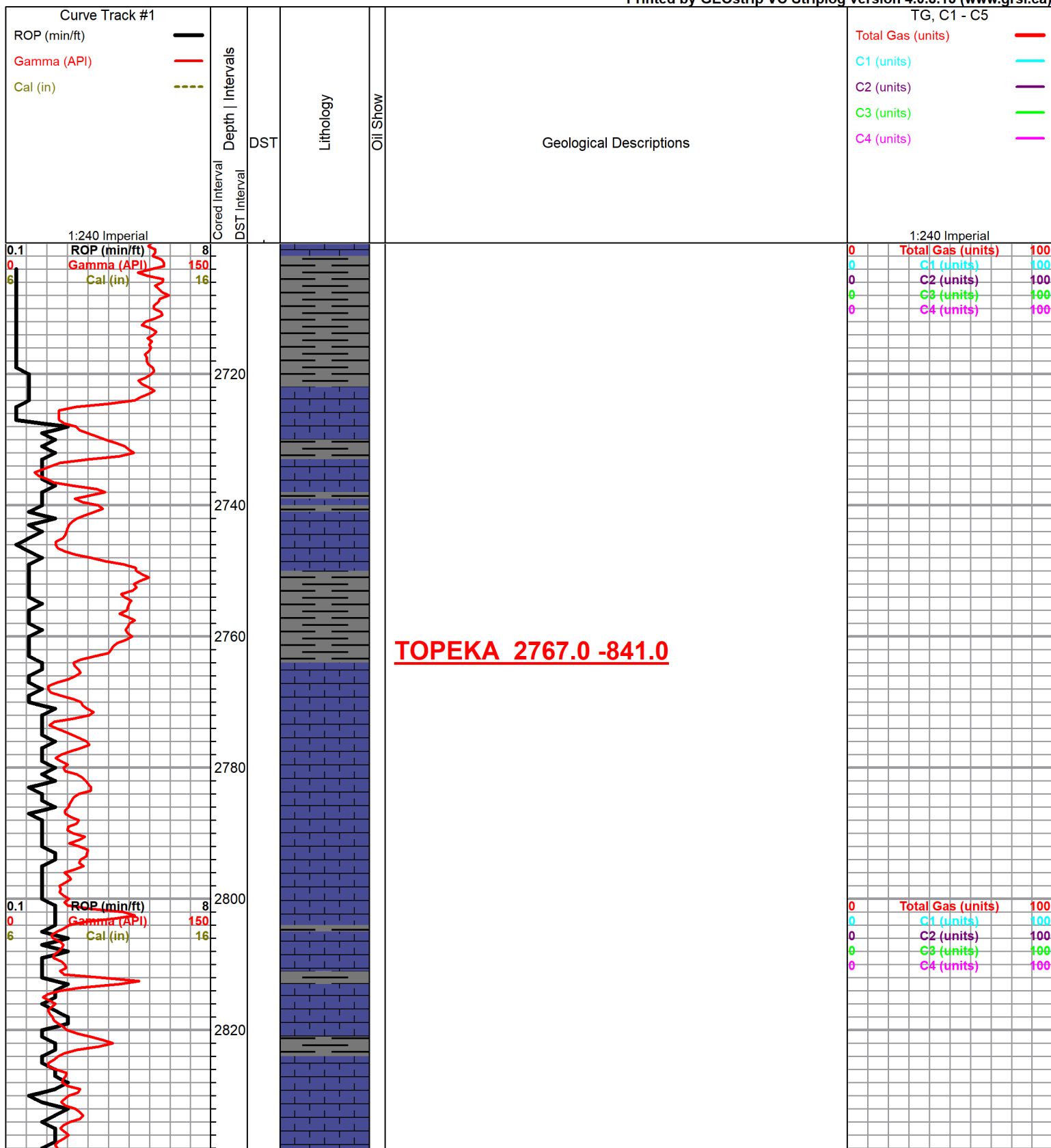
#### ROCK TYPES

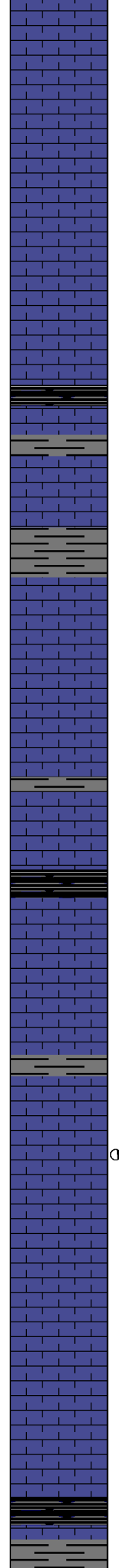
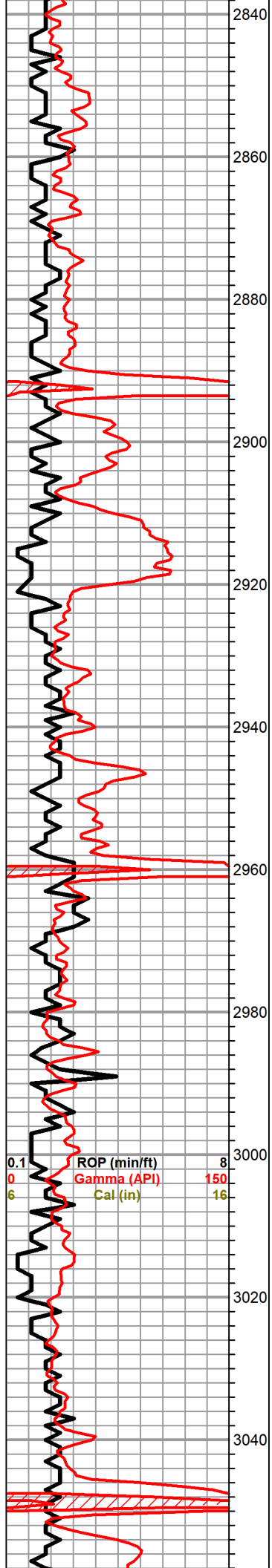


### OTHER SYMBOLS

- Oil Show**
- Good Show
  - Fair Show
  - Poor Show
  - Spotted or Trace
  - Questionable Stn
  - D Dead Oil Stn
  - Fluorescence
  - \* Gas
- DST**
- DST Int
  - DST alt
  - Core
  - tail pipe

Printed by GEOstrip VC Striplog version 4.0.8.15 (www.grsi.ca)





Sh, black carb

LS, white/ gry, fxl, foss in pt, poor vis. poro.

LS, tan, brn fxl, foss in pt, few sub oom, chalky, tr. brown stain, nsfo, no odor

LS, gry, white, fxl, slightly chalky, few gran,

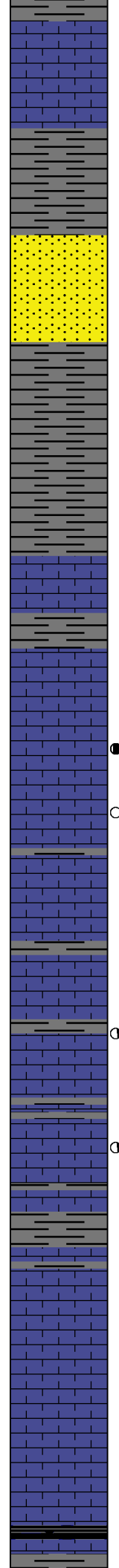
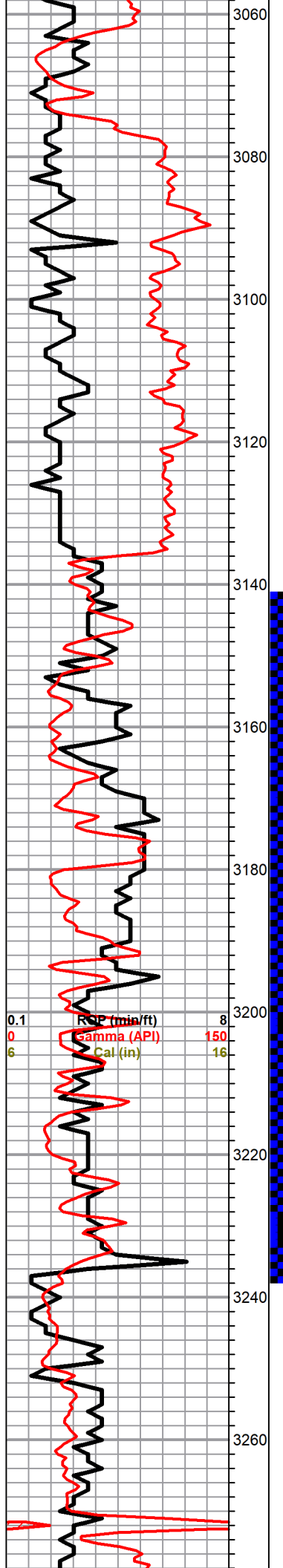
a/a,+ white/ gry chert

**HEEBNER 3049.0 -1123.0**

Sh, black carb

0	Total Gas (units)	100
0	C1 (units)	100
0	C2 (units)	100
0	C3 (units)	100
0	C4 (units)	100

ROP (min/ft) 8  
 Gamma (API) 150  
 Cal (in) 16



**TORONTO 3067.0 -1141.0**

LS, white, gry, fxl, chalky, tr. blk/ gry stain , nsfo, no odor

**DOUGLAS 3078.0 -1152.0**

Sh, gry, greenish

Sd, gry, gryish, green, vfg, mica, few friable, scatt IG (barren)

Sh, gry, griish green rusty brown silty sh

**BROWN LIME 3138.0 -1218.0**

LS, tan/ brn fxl, slightly cherty

**LANSING 3150.0 -1228.0**

● LS, tan,gry sub oom, chalky, fr. stain/sat, fr-sfo, good odor

○ LS, gry, white, chalky, poor vis porosity

LS, white, cream, fxl, chalky poorly developed vis porosity. no shows

○ LS, cream, tan, ool, slightly chalky, brn . stain, sfo, ft. odor

○ LS, white, gry, ool, chalky, poor vis. porosity, poor stain, wk sfo, no odor

Sh, gry, silty soft

LS, cream, tan, ool, oom, fair oom porosity (barren)

LS, tan, slightly cherty (dense)

Tr. gry/ blk sh.

DST #1 3143-3233

Misrun - hit bridge  
 -30'

DST#2 3143-3233

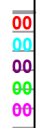
30-30-45-60

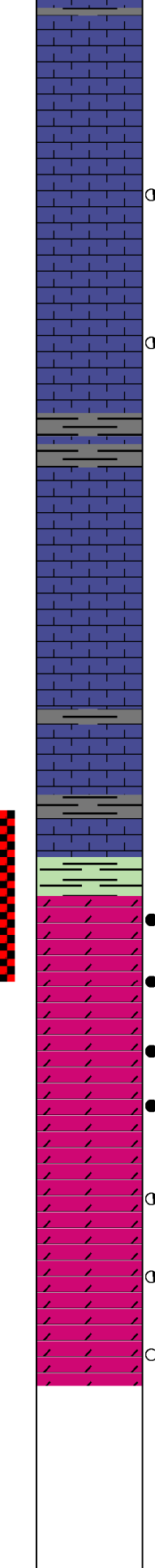
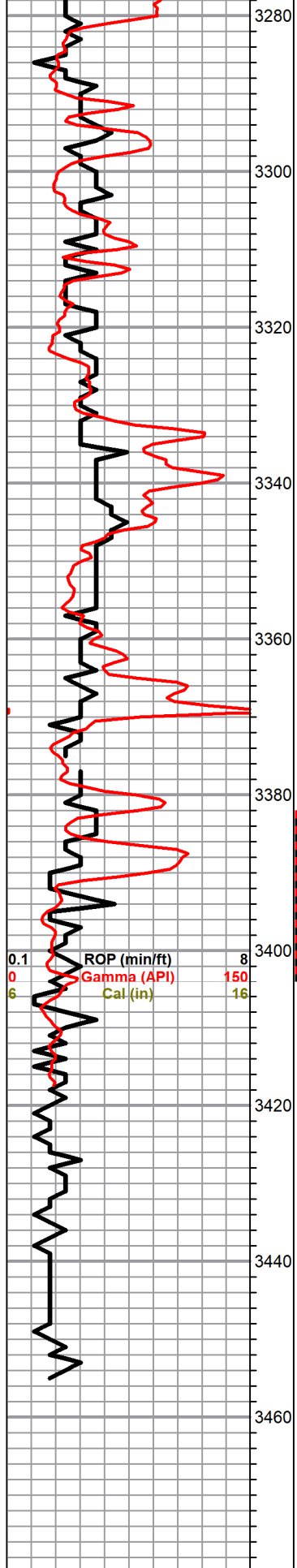
1st Open:  
 weak

2nd Open:  
 Weak .75"

Recovery:  
 35' Mud

Pressures:  
 ISIP 634 psi  
 FSIP 29 psi  
 IFP 14-21 psi  
 FFP 22-24 psi  
 HSH 1482-1468 psi





LS, white, sub oom, chalky poor vis. porosity, (barren)

LS, white ool, chalky, scattered porosity, tr. brn stain , tr. fo, no odor

LS, white, gry sub oom, chalky, tr. brn spty stain, nsfo, no odor

Sh, gry, silty, soft

LS, white, tan, gry fxl, slightly foss, chalky , no shows

Sh, gry gryish soft

LS, tan, highly ool, slightly cherty poor vis porosity, no shows

**BKC 3388.0 -1462.0**

**ARBUCKLE 3396.0 -1470.0**

Dol. white/ cream, fxl, suc. slightly cherty, tr. brn stain,

Dol. white, tan, suc. fair stain/sat., sfo, ft. odor

A/a+ white, cream, f-med xln, dol. fair inxln porosity, brn stain , sfo, ft. odor

Dol, white, cream, gry, f-med xln , fair inxln porosity, brn stain, sfo

Dol. a/a , tr. poor stain, tr. fo,

Dol white, cream, gry, fx-med xln, fr. inxln porosity, brn, blk stain , tr. fo, ??? odor

Dol, white, cream, med/ coarse xln, good inxln porosity, blk stain, nsfo ,

**RTD 3454.0 -1528.0**

**DST#3 3382-3404**  
 30-30-30-45

1st Open:  
 BOB 30sec.

2nd Open:  
 BOB 1.5 mins.

Recovery:  
 1338' Clean Oil

189' Muddy Gassy Oil

Pressures  
 ISIP 668 psi  
 FSIP 723 psi  
 IFP 344-542 psi  
 FFP 559-624 psi  
 HSH 1625-1610 psi

10  
 10  
 10  
 10  
 10



