



Musgrove

Petroleum Geology
212 Main Street, Claflin KS

GEOLOGIST'S REPORT

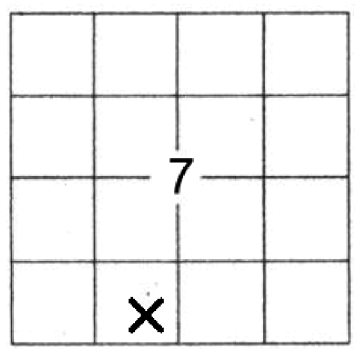
DRILLING TIME AND SAMPLE LOG

COMPANY K&N Petroleum, Inc
 LEASE Schlessiger #6
 FIELD Finger
 LOCATION SW-SE-NE-NE (385'FSL & 1535' FWL)
 SEC 7 TWSP 17S RGE 12W
 COUNTY Barton STATE Kansas
 CONTRACTOR Southwind Drilling co. (Rig #8)
 SPUD 08/14/2019 COMP 08/19/2019
 RTD 3450' LTD 3447'
 MUD UP 2609' TYPE MUD Chemical

ELEVATIONS
 KB 1897'
 DF _____
 GL 1887'
 Measurements Are All From KB
 CASING
 SURFACE 8 5/8"@393'
 PRODUCTION 5 1/2"@3449'
 ELECTRICAL SURVEYS
 ELI Wireline
 DUCP, MEL, DIL, CDL/CNL
 & SONIC

SAMPLES SAVED FROM 2700' TO RTD
 DRILLING TIME KEPT FROM 2700' TO RTD
 SAMPLES EXAMINED FROM 2700' TO RTD
 GEOLOGICAL SUPERVISION FROM 2850' TO RTD
 GEOLOGIST ON WELL Jim Musgrove

FORMATION TOPS	LOG	SAMPLES
Anhydrite	777 +1120	
B. Anhydrite	803 +1094	
Heebner	3014 -1117	
Toronto	3031 -1134	
Douglas	3043 -1146	
Brown lime	3105 -1208	
Lansing	3121 -1224	
BKC	3361 -146.4	
Arbuckle	3366 -146.9	
RTD	3450 -1553	
LTD	3447 -1550	



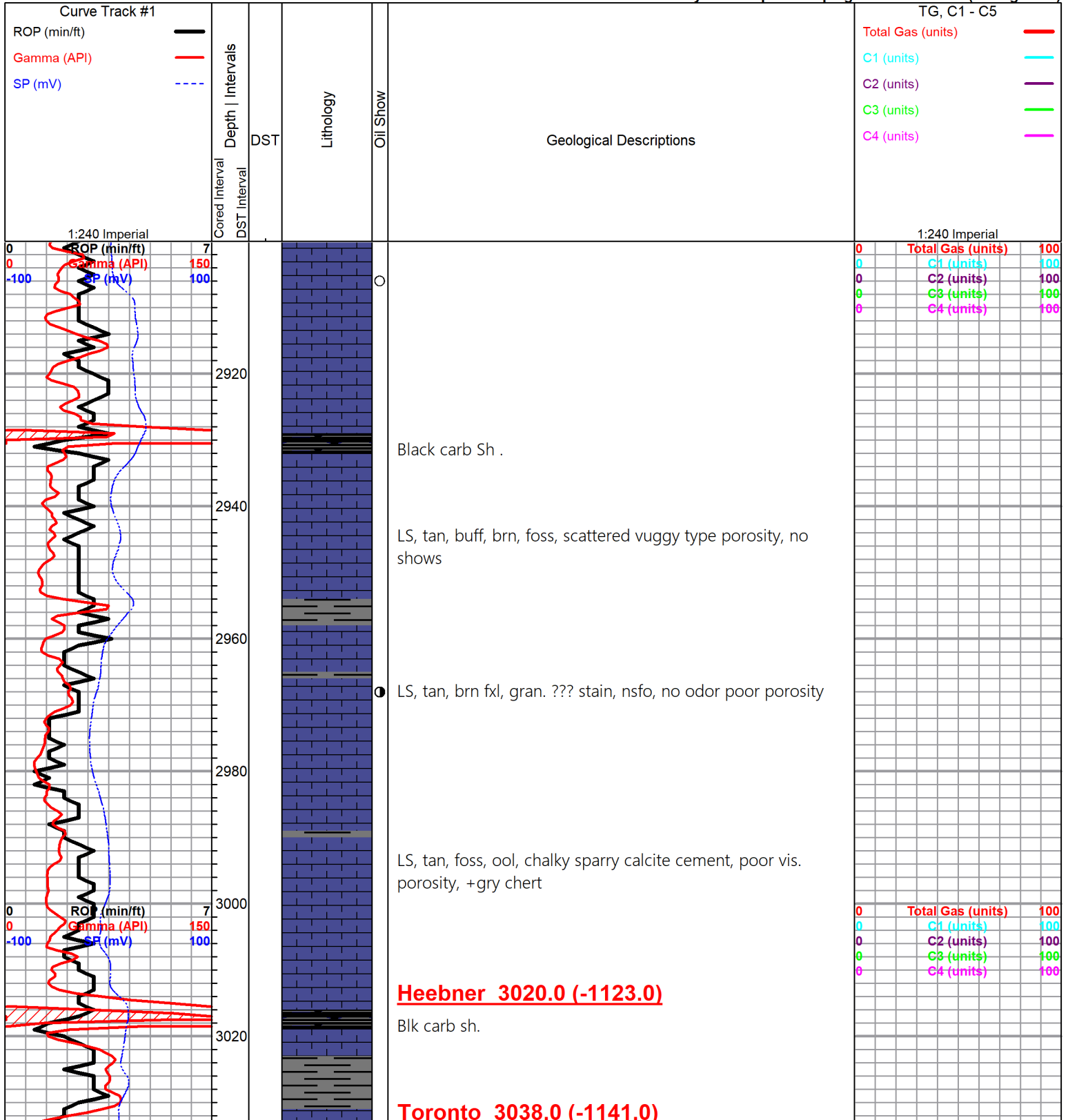
ROCK TYPES

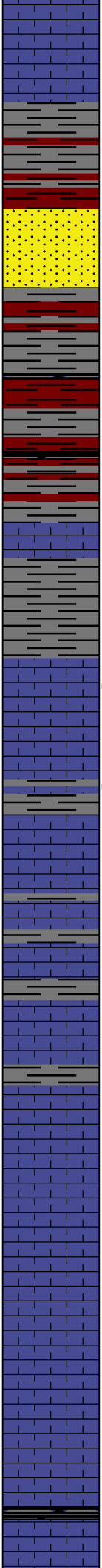
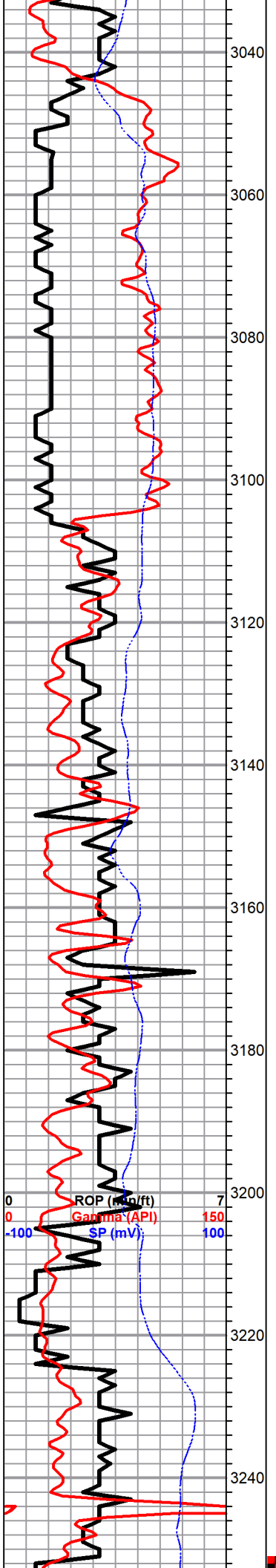


OTHER SYMBOLS

- Oil Show**
- Good Show
 - Fair Show
 - Poor Show
 - Spotted or Trace
 - Questionable Stn
 - D Dead Oil Stn
 - Fluorescence
 - * Gas
- DST**
- DST Int
 - DST alt
 - Core
 - tail pipe

Printed by GEOstrip VC Striplog version 4.0.8.15 (www.grsi.ca)





LS, white/ crm , chalky, poor vis. porosity

Douglas 3049.0 (-1152.0)

Sh, gry, rusty, brn, maroon

Sd., white, lime , green, vfg, mica, scattered porosity, no shows

Sh, & sand, a/a

Brown Lime 3110.0 (-1213.0)

LS, tan, gry, chalky, cherty (dense)

Sh, gry, silty soft

Lansing 3124.0 (-1227.0)

○ LS, white, cream, foss/ slightly ool, chalky, poor porosity, tr. blk stain , nsfo, no odor

○ LS, white, cream, foss, chalky, tr. poor brown spty stain , nsfo , no odor

LS, white, cream, gry, f- med xln , chalky, few foss, poor vis. porosity, no shows

LS, a/a no show

LS, tan, gry, foss, sl. cherty poor vis. porosity, no shows

LS, white, tan, oom, good oom, vuggy porosity, no shows

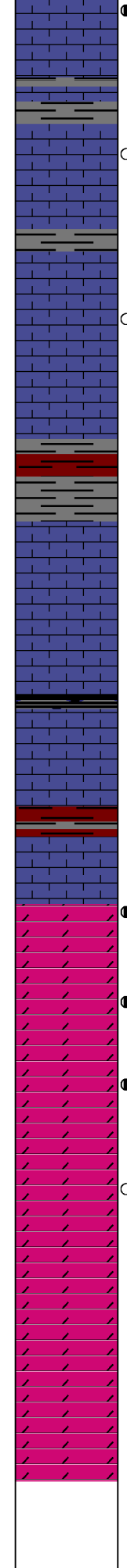
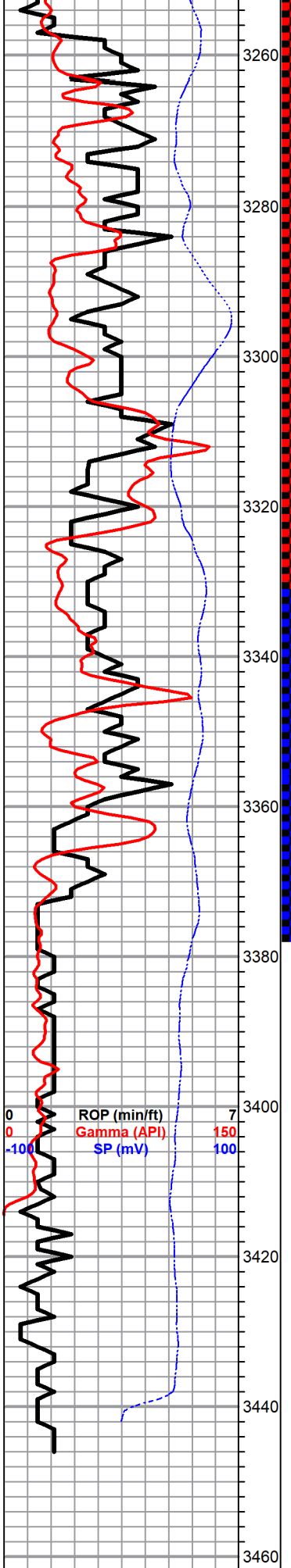
LS, white, gry, fxl, chalky, no shows

Sh, black carb

0	Total Gas (units)	100
0	C1 (units)	100
0	C2 (units)	100
0	C3 (units)	100
0	C4 (units)	100

DST #1 3251-3330
45-30-45-45

1st Open:



LS, white, cream, ool, oom, scattered porosity, brn stain, sfo, faint odor

LS, white, gry, ool, scattered porosity, tr. brn stain, wk sfo, ??? odor

LS, gry, white, oolitic, sub oomoldic, cherty, tr. stain, tr. free oil, no odor

Sh, maroon, rusty, brn

LS, white, cream, chalky, dense

Tr. blk shale.

LS, gry, white, chalky in pt, dense.

BKC 3365.0 (-1466.0)

Slug maroon shale

Arbuckle 3371.0 (-1474.0)

Dol. white, crm, fxl, slightly suc. scattered fine vuggy / p.p. type porosity, golden brn stain, sfo, faint odor

Dol, white/ cream, med xln, good inxln por., fair stain/ sat. fair sfo, ft. odor

Dol. a/a, fair - good inxln por., brn / gry stain, sfo, ft. odor

Dol, white/ cream, med / coarse xln, good inxln / vuggy type por., gluc. in pt. tr. blk tarry stain, nsfo, no odor, +white chalk

Dol, white, cream, med / coarse- xln, good in -xln por,

Dol, a/a, good inxln por. + white chalk, tr., gry white chert, tr. pyrite, nsfo, no odor

RTD 3450.0 (-1553.0)

LTD 3447.0 (-1550.0)

Blow, fair (5.25 '')

2nd Open :
 Blow, Fair (7'')

Recovery:
 153' GIP
 1' Clean oil
 35' Heavily oil & gas cut mud
 (25%G, 35%O, 40 % M)

Pressures:
 ISIP 662 psi
 FSIP 931 psi
 IFP 9-16 psi
 FFP 17-25 psi
 HSH 1590-1589 psi

DST# 2 3251-3330
 45-30-45-45

1st Open:
 Fair (6.5'' blow)

2nd Open :
 Fair (5'' blow)

Recovery:
 25' GIP
 310 ' Clean Oil
 63' Muddy Oil
 (5%G, 50%O, 45% M)

Pressures:
 ISIP 1088 psi
 FSIP 1084 psi
 IFP 11-84 psi
 FFP 87-150 psi
 HSH 1614-1614 psi

