

KANSAS CORPORATION COMMISSION
OIL & GAS CONSERVATION DIVISION

Form must be Typed
Form must be signed

TEMPORARY ABANDONMENT WELL APPLICATION

All blanks must be complete

OPERATOR: License#
Name:
Address 1:
Address 2:
City: State: Zip:
Contact Person:
Phone:
Contact Person Email:
Field Contact Person:
Field Contact Person Phone:

API No. 15-
Spot Description:
Sec. Twp. S. R.
feet from N / S Line of Section
feet from E / W Line of Section
GPS Location: Lat: , Long:
Datum: NAD27 NAD83 WGS84
County: Elevation: GL KB
Lease Name: Well #:
Well Type: Oil Gas OG WSW Other:
SWD Permit #: ENHR Permit #:
Gas Storage Permit #:
Spud Date: Date Shut-In:

Table with 7 columns: Conductor, Surface, Production, Intermediate, Liner, Tubing. Rows include Size, Setting Depth, Amount of Cement, Top of Cement, Bottom of Cement.

Casing Fluid Level from Surface: How Determined? Date:
Casing Squeeze(s): to w / sacks of cement, to w / sacks of cement. Date:
Do you have a valid Oil & Gas Lease? Yes No
Depth and Type: Junk in Hole at Tools in Hole at Casing Leaks: Yes No Depth of casing leak(s):
Type Completion: ALT. I ALT. II Depth of: DV Tool: w / sacks of cement Port Collar: w / sack of cement
Packer Type: Size: Inch Set at: Feet
Total Depth: Plug Back Depth: Plug Back Method:

Geological Data:

Table with 4 columns: Formation Name, Formation Top, Formation Base, Completion Information. Rows 1 and 2.

UNDER PENALTY OF PERJURY I HEREBY ATTEST THAT THE INFORMATION CONTAINED HEREIN IS TRUE AND CORRECT TO THE BEST OF MY KNOWLEDGE

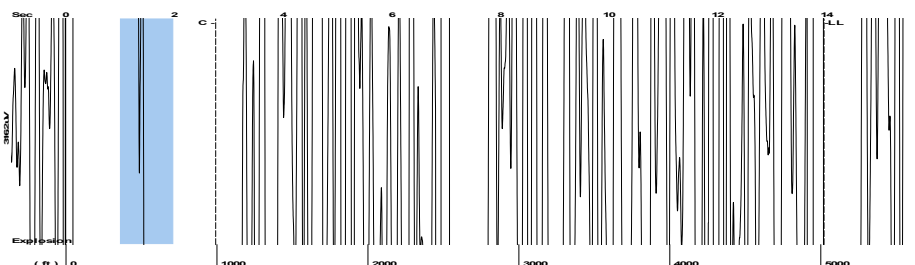
Submitted Electronically

Do NOT Write in This Space - KCC USE ONLY
Date Tested: Results: Date Plugged: Date Repaired: Date Put Back in Service:
Review Completed by: Comments:
TA Approved: Yes Denied Date:

Mail to the Appropriate KCC Conservation Office:

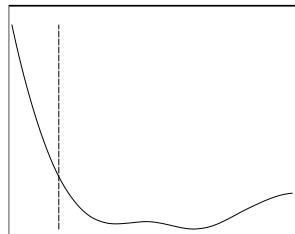
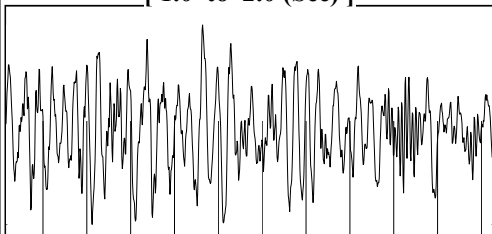
Table with 3 columns: District Office #, Address, Phone. Includes map of Kansas with numbered districts 1-4.

Group: Examples Well: BLEESS-MCFADDIN #7-1 (acquired on: 08/30/21 13:22:33)



Filter Type High Pass Automatic Collar Count Yes Time 13.941 sec
 Manual Acoustic Veloc 703.663 ft/s Manual JTS/sec 11.0988 Joints 158.42 Jts
 Depth 5021.93 ft

[1.0 to 2.0 (Sec)]



Analysis Method: Automatic

Group: Examples Well: BLEESS-MCFADDIN #7-1 (acquired on: 08/30/21 13:22:33)

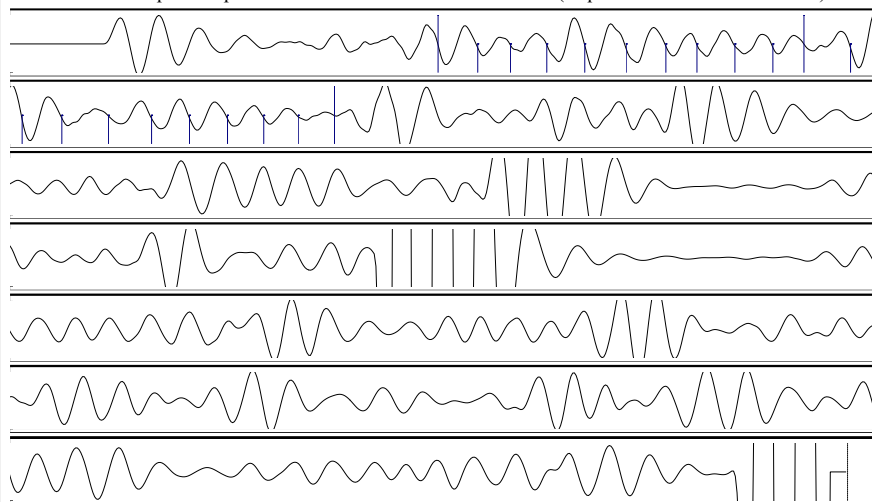
NO PRESSURE DATA AVAILABLE

Change in Pressure 0.00 psi PT18514
 Range 0 - ? psi
 Change in Time 0.00 min

Group: Examples Well: BLEESS-MCFADDIN #7-1 (acquired on: 08/30/21 13:22:33)

Production					
Current	Potential	Casing Pressure		Producing	
Oil - * -	- * - BBL/D	307.9 psi (g)		Annular	
Water - * -	- * - BBL/D	Casing Pressure Buildup		Gas Flow	
Gas - * -	- * - Mscf/D	- * - psi		- * - Mscf/D	
		- * - min		% Liquid	
IPR Method	Vogel	Gas/Liquid Interface Pressure		100 %	
PBHP/SBHP	- * -	- * - psi (g)			
Production Efficiency	0.0				
		Liquid Level Depth			
Oil 40 deg.API		5021.93 ft			
Water 1.05 Sp.Gr.H2O		Pump Intake Depth			
Gas 1.16 Sp.Gr.AIR		- * - ft			
Acoustic Velocity	720.455 ft/s	Formation Depth			
		6500.00 ft			
Formation Submergence				Pump Intake	
Total Gaseous Liquid Column HT (TVD)		- * - ft		- * - psi (g)	
Equivalent Gas Free Liquid HT (TVD)		- * - ft		Producing BHP	
				- * - psi (g)	
Acoustic Test				Static BHP	
				- * - psi (g)	

Group: Examples Well: BLEESS-MCFADDIN #7-1 (acquired on: 08/30/21 13:22:33)



Acoustic Velocity 720.455 ft/s Joints counted 20
 Joints Per Second 11.3636 jts/sec Joints to liquid level 158.42
 Depth to liquid level 5021.93 ft Filter Width 9.09878 13.0988
 Automatic Collar Count Yes Time to 1st Collar 0.992 2.752

September 02, 2021

Jose Reyes
Palmer Oil, Inc.
3118 N. CUMMINGS RD.
PO BOX 399
GARDEN CITY, KS 67846-0399

Re: Temporary Abandonment
API 15-129-21852-00-00
BLEESS-MCFADDIN 7 #1
NW/4 Sec.07-33S-39W
Morton County, Kansas

Dear Jose Reyes:

"Your temporary abandonment (TA) application for the well listed above has been approved. In accordance with K.A.R. 82-3-111 the TA status of this well will expire 09/02/2022.

- * If you return this well to service or plug it, please notify the District Office.
- * If you sell this well you are required to file a Transfer of Operator form, T-1.
- * If the well will remain temporarily abandoned, you must submit a new TA application, CP-111, before 09/02/2022.

You may contact me at the number above if you have questions.

Very truly yours,

Michael Maier"