

KANSAS CORPORATION COMMISSION
OIL & GAS CONSERVATION DIVISION

Form must be Typed
Form must be signed

TEMPORARY ABANDONMENT WELL APPLICATION

All blanks must be complete

OPERATOR: License#
Name:
Address 1:
Address 2:
City: State: Zip:
Contact Person:
Phone:
Contact Person Email:
Field Contact Person:
Field Contact Person Phone:

API No. 15-
Spot Description:
Sec. Twp. S. R.
feet from N / S Line of Section
feet from E / W Line of Section
GPS Location: Lat: , Long:
Datum: NAD27 NAD83 WGS84
County: Elevation: GL KB
Lease Name: Well #:
Well Type: (check one) Oil Gas OG WSW Other:
SWD Permit #: ENHR Permit #:
Gas Storage Permit #:
Spud Date: Date Shut-In:

Table with 7 columns: Conductor, Surface, Production, Intermediate, Liner, Tubing. Rows include Size, Setting Depth, Amount of Cement, Top of Cement, Bottom of Cement.

Casing Fluid Level from Surface: How Determined? Date:
Casing Squeeze(s): to w / sacks of cement, to w / sacks of cement. Date:
Do you have a valid Oil & Gas Lease? Yes No
Depth and Type: Junk in Hole at Tools in Hole at Casing Leaks: Yes No Depth of casing leak(s):
Type Completion: ALT. I ALT. II Depth of: DV Tool: w / sacks of cement Port Collar: w / sack of cement
Packer Type: Size: Inch Set at: Feet
Total Depth: Plug Back Depth: Plug Back Method:

Geological Data:

Table with 4 columns: Formation Name, Formation Top, Formation Base, Completion Information. Rows 1 and 2.

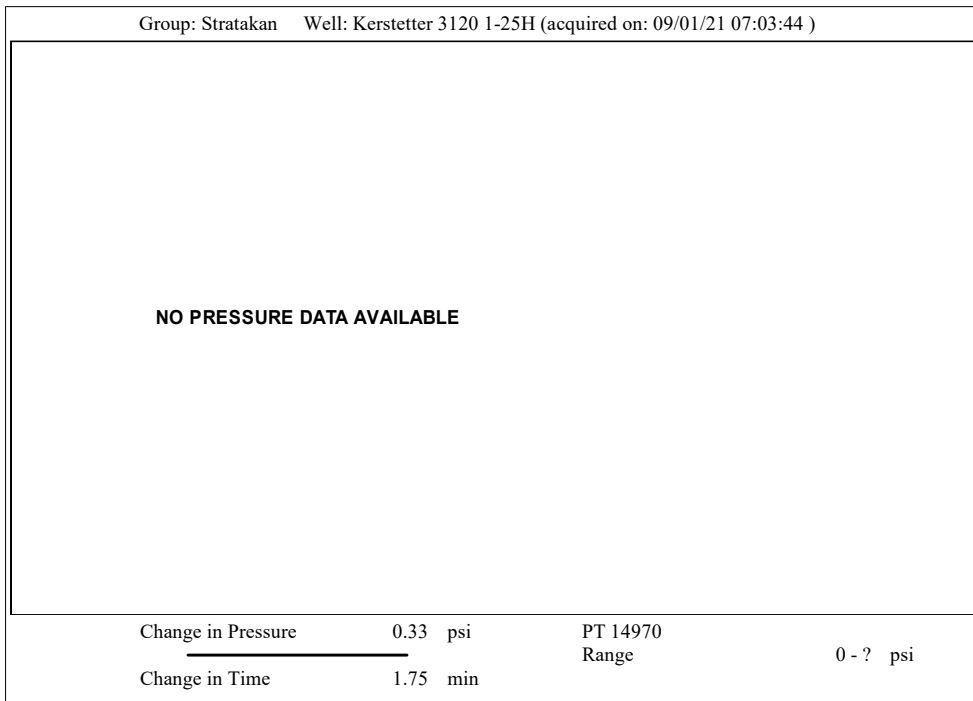
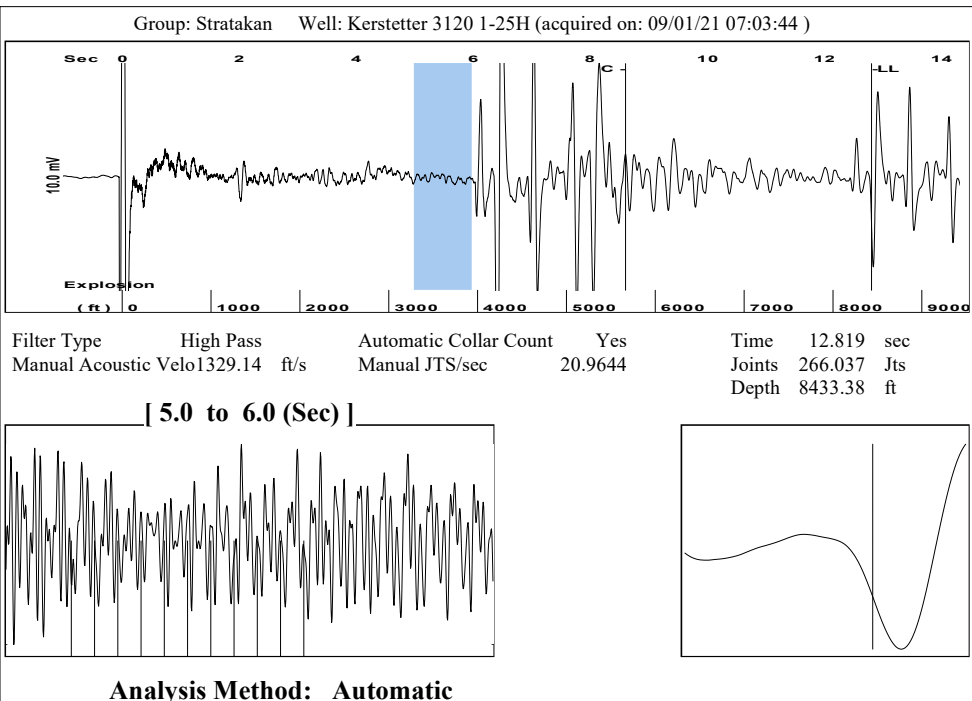
UNDER PENALTY OF PERJURY I HEREBY ATTEST THAT THE INFORMATION CONTAINED HEREIN IS TRUE AND CORRECT TO THE BEST OF MY KNOWLEDGE

Submitted Electronically

Do NOT Write in This Space - KCC USE ONLY
Date Tested: Results: Date Plugged: Date Repaired: Date Put Back in Service:
Review Completed by: Comments:
TA Approved: Yes Denied Date:

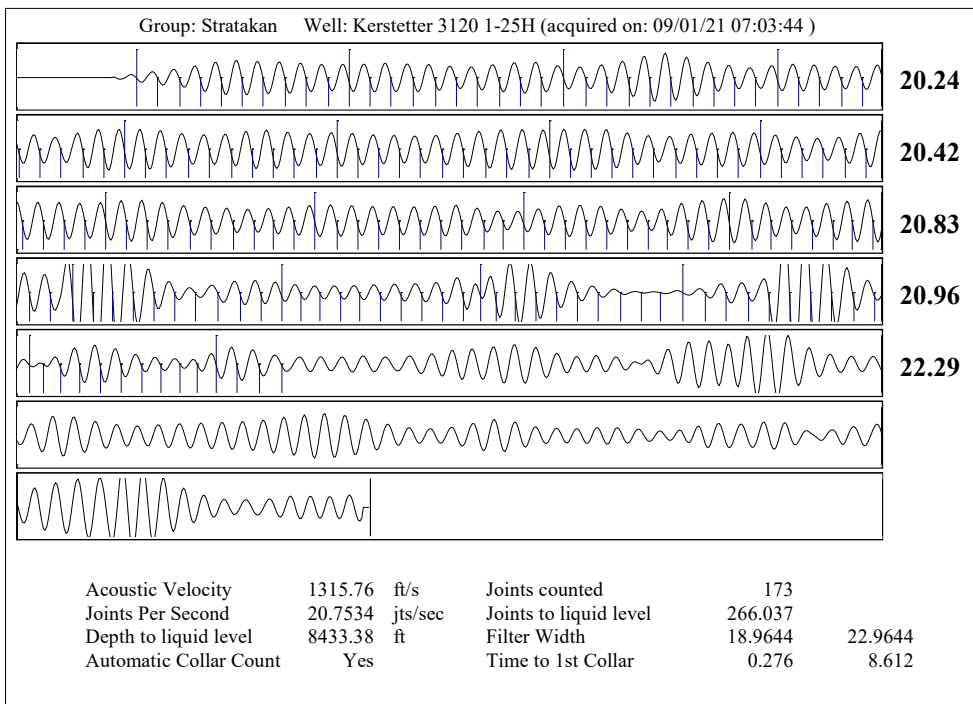
Mail to the Appropriate KCC Conservation Office:

Table with 3 columns: District Office #, Address, Phone. Rows 1-4.



Group: Stratakan Well: Kerstetter 3120 1-25H (acquired on: 09/01/21 07:03:44)

Production				
Current	Potential	Casing Pressure	Producing	
Oil - *-	- *- BBL/D	618.0 psi (g)		
Water - *-	- *- BBL/D	Casing Pressure Buildup	Annular	
Gas - *-	- *- Mscf/D	0.3 psi	Gas Flow	
		1.75 min	10 Mscf/D	
IPR Method	Vogel	Gas/Liquid Interface Pressure	% Liquid	
PBHP/SBHP	- *-	755.5 psi (g)	100 %	
Production Efficiency	0.0			
		Liquid Level Depth		
Oil 40 deg.API		8433.38 ft		
Water 1.05 Sp.Gr.H2O		Pump Intake Depth		
Gas 0.67 Sp.Gr.AIR		4750.00 ft		
Acoustic Velocity	1315.76 ft/s	Formation Depth		
		5186.00 ft		
			Pump Intake	
Formation Submergence			696.9 psi (g)	
Total Gaseous Liquid Column HT (TVD)	- *- ft		Producing BHP	
Equivalent Gas Free Liquid HT (TVD)	- *- ft		703.9 psi (g)	
			Static BHP	
Acoustic Test			700.3 psi (g)	



Conservation Division
District Office No. 1
210 E. Frontview, Suite A
Dodge City, KS 67801



Phone: 620-682-7933
<http://kcc.ks.gov/>

Andrew J. French, Chairperson
Dwight D. Keen, Commissioner
Susan K. Duffy, Commissioner

Laura Kelly, Governor

September 09, 2021

Justin Prater
StrataKan Exploration, LLC
100 S MAIN ST
PLAINVILLE, KS 67663-2234

Re: Temporary Abandonment
API 15-033-21581-01-00
KERSTETTER 3120 1-25H
SW/4 Sec.25-31S-20W
Comanche County, Kansas

Dear Justin Prater:

"Your temporary abandonment (TA) application for the well listed above has been approved. In accordance with K.A.R. 82-3-111 the TA status of this well will expire 09/09/2022.

- * If you return this well to service or plug it, please notify the District Office.
- * If you sell this well you are required to file a Transfer of Operator form, T-1.
- * If the well will remain temporarily abandoned, you must submit a new TA application, CP-111, before 09/09/2022.

You may contact me at the number above if you have questions.

Very truly yours,

Michael Maier"