

KANSAS CORPORATION COMMISSION
OIL & GAS CONSERVATION DIVISION

TEMPORARY ABANDONMENT WELL APPLICATION

OPERATOR: License#
Name:
Address 1:
Address 2:
City: State: Zip:
Contact Person:
Phone:
Contact Person Email:
Field Contact Person:
Field Contact Person Phone:

API No. 15-
Spot Description:
Sec. Twp. S. R.
GPS Location: Lat: Long:
Datum: NAD27 NAD83 WGS84
County: Elevation:
Lease Name: Well #:
Well Type: Oil Gas OG WSW Other:
SWD Permit #: ENHR Permit #:
Gas Storage Permit #:
Spud Date: Date Shut-In:

Table with 7 columns: Conductor, Surface, Production, Intermediate, Liner, Tubing. Rows include Size, Setting Depth, Amount of Cement, Top of Cement, Bottom of Cement.

Casing Fluid Level from Surface: How Determined? Date:
Casing Squeeze(s): to w / sacks of cement, to w / sacks of cement. Date:
Do you have a valid Oil & Gas Lease? Yes No
Depth and Type: Junk in Hole at Tools in Hole at Casing Leaks: Yes No Depth of casing leak(s):
Type Completion: ALT. I ALT. II Depth of: DV Tool: w / sacks of cement Port Collar: w / sack of cement
Packer Type: Size: Inch Set at: Feet
Total Depth: Plug Back Depth: Plug Back Method:

Geological Data:

Table with 4 columns: Formation Name, Formation Top, Formation Base, Completion Information. Rows 1 and 2.

UNDER PENALTY OF PERJURY I HEREBY ATTEST THAT THE INFORMATION CONTAINED HEREIN IS TRUE AND CORRECT TO THE BEST OF MY KNOWLEDGE

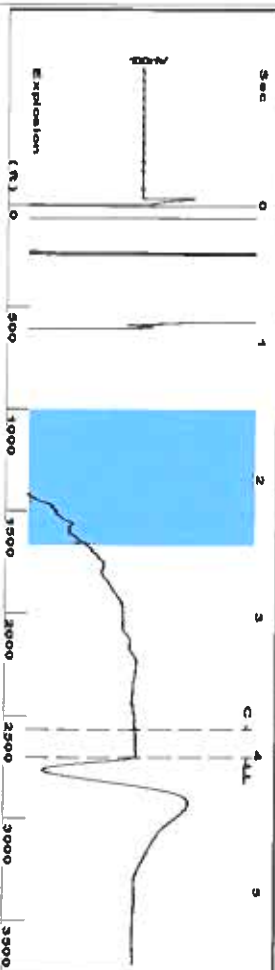
Submitted Electronically

Do NOT Write in This Space - KCC USE ONLY
Date Tested: Results: Date Plugged: Date Repaired: Date Put Back in Service:
Review Completed by: Comments:
TA Approved: Yes Denied Date:

Mail to the Appropriate KCC Conservation Office:

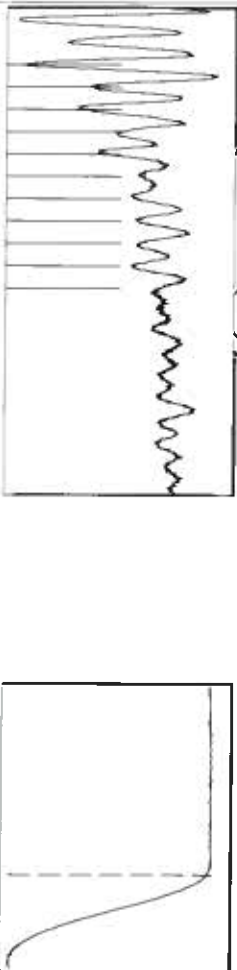
Table with 2 columns: Office Address, Phone. Rows for District Office #1, #2, #3, #4.

Group: TAD Well: English D-2 (acquired on 08/25/21 10:14:08)



Filter Type: High Pass  
 Manual Acoustic Veloc: 1373.04 ft/s  
 Automatic Collar Count: Yes  
 Manual JTS/Sec: 21.7391  
 Time: 4.023 sec  
 Joints: 85.523 Jts  
 Depth: 2700.82 ft

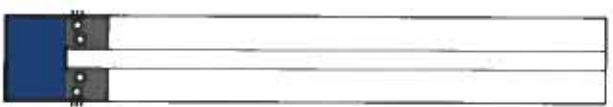
1.5 to 2.5 (Sec)



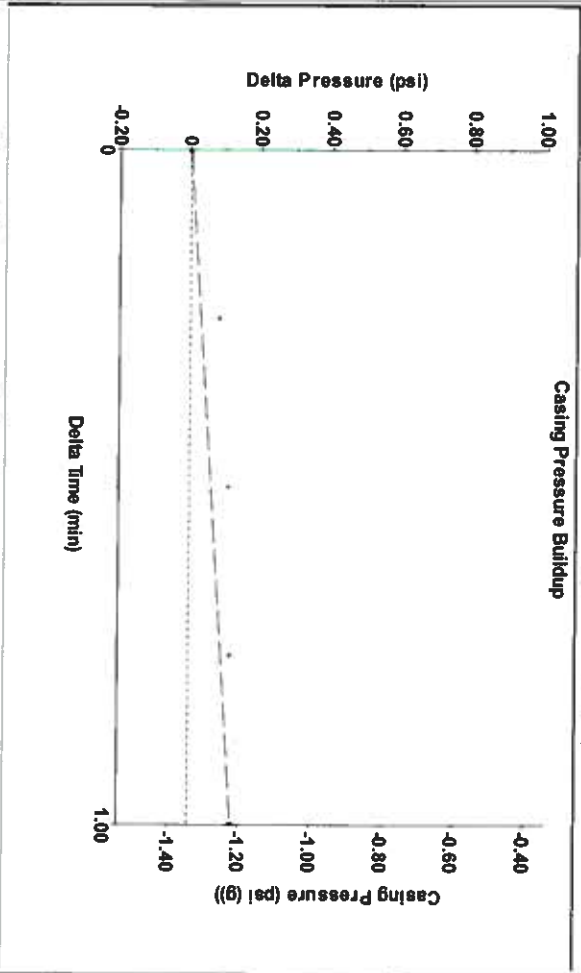
Analysis Method: Automatic

Group: TAD Well: English D-2 (acquired on 08/25/21 10:14:08)

Production	Potential	Casing Pressure	Producing
Oil: -*-	-*- BBL/D	-1.3 psi (g)	Annular Gas Flow
Water: -*-	-*- BBL/D	0.1 psi	2 Mscf/D
Gas: -*-	-*- Mscf/D	1.00 min	% Liquid: 87 %
IPR Method: PBHP/SBHP	Vogel: -*-	Gas/Liquid Interface Pressure: -0.5 psi (g)	
Production Efficiency: 0.0		Liquid Level Depth: 2700.82 ft	
Oil: 40 deg API		Pump Intake Depth: 2969.00 ft	
Water: 1.05 Sp Gr H2O		Formation Depth: 2903.00 ft	
Gas: 0.67 Sp Gr AIR			
Acoustic Velocity: 1342.69 ft/s			
Formation Submergence			
Total Gaseous Liquid Column HT (TVD): 268 ft			
Equivalent Gas Free Liquid HT (TVD): 242 ft			
Acoustic Test			

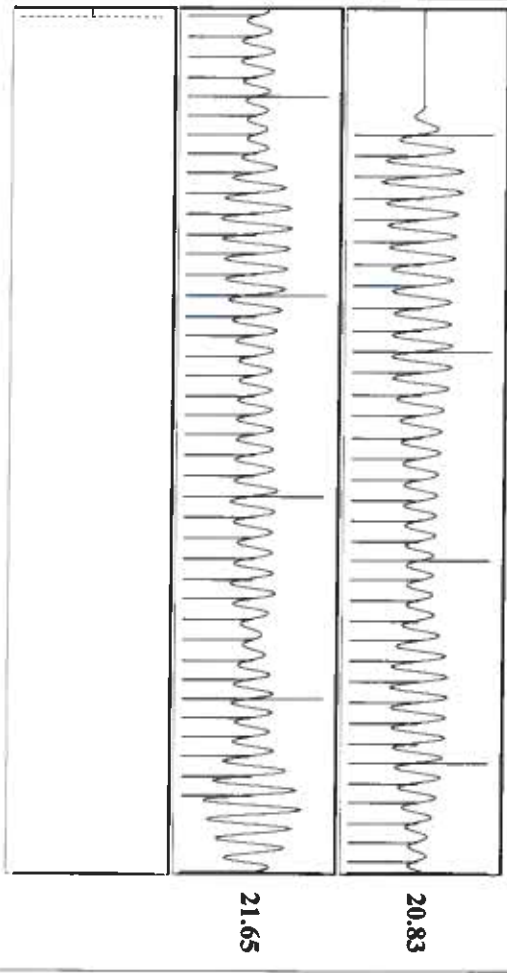


Group: TAD Well: English D-2 (acquired on 08/25/21 10:14:08)



Change in Pressure: 0.12 psi  
 Change in Time: 1.00 min  
 PT14654 Range  
 0 - 2 psi

Group: TAD Well: English D-2 (acquired on 08/25/21 10:14:08)



Acoustic Velocity: 1342.69 ft/s  
 Joints Per Second: 21.2585 Jts/sec  
 Depth to liquid level: 2700.82 ft  
 Automatic Collar Count: Yes

Joints counted: 75  
 Joints to liquid level: 85.523  
 Filter Width: 19.7391  
 Time to 1st Collar: 0.292

September 09, 2021

Katherine McClurkan  
Merit Energy Company, LLC  
13727 Noel Road, Suite 1200  
Dallas, TX 75240

Re: Temporary Abandonment  
API 15-067-20422-00-00  
English D 2  
NE/4 Sec.22-27S-35W  
Grant County, Kansas

Dear Katherine McClurkan:

"Your temporary abandonment (TA) application for the well listed above has been approved. In accordance with K.A.R. 82-3-111 the TA status of this well will expire 03/22/2022.

- \* If you return this well to service or plug it, please notify the District Office.
- \* If you sell this well you are required to file a Transfer of Operator form, T-1.
- \* If the well will remain temporarily abandoned, you must submit a new TA application, CP-111, before 03/22/2022.

You may contact me at the number above if you have questions.

Very truly yours,

Michael Maier"