

KANSAS CORPORATION COMMISSION
OIL & GAS CONSERVATION DIVISION

TEMPORARY ABANDONMENT WELL APPLICATION

OPERATOR: License#
Name:
Address 1:
Address 2:
City: State: Zip:
Contact Person:
Phone:
Contact Person Email:
Field Contact Person:
Field Contact Person Phone:

API No. 15-
Spot Description:
Sec. Twp. S. R.
GPS Location: Lat: Long:
Datum: NAD27 NAD83 WGS84
County: Elevation:
Lease Name: Well #:
Well Type: Oil Gas OG WSW Other:
SWD Permit #: ENHR Permit #:
Gas Storage Permit #:
Spud Date: Date Shut-In:

Table with 7 columns: Conductor, Surface, Production, Intermediate, Liner, Tubing. Rows include Size, Setting Depth, Amount of Cement, Top of Cement, Bottom of Cement.

Casing Fluid Level from Surface: How Determined? Date:
Casing Squeeze(s): to w / sacks of cement, to w / sacks of cement. Date:
Do you have a valid Oil & Gas Lease? Yes No
Depth and Type: Junk in Hole at Tools in Hole at Casing Leaks: Yes No Depth of casing leak(s):
Type Completion: ALT. I ALT. II Depth of: DV Tool: w / sacks of cement Port Collar: w / sack of cement
Packer Type: Size: Inch Set at: Feet
Total Depth: Plug Back Depth: Plug Back Method:

Geological Data:

Table with 4 columns: Formation Name, Formation Top, Formation Base, Completion Information. Rows 1 and 2.

UNDER PENALTY OF PERJURY I HEREBY ATTEST THAT THE INFORMATION CONTAINED HEREIN IS TRUE AND CORRECT TO THE BEST OF MY KNOWLEDGE

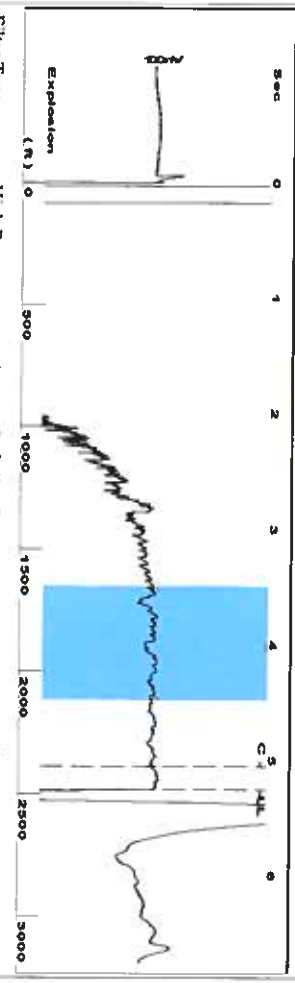
Submitted Electronically

Do NOT Write in This Space - KCC USE ONLY
Date Tested: Results: Date Plugged: Date Repaired: Date Put Back in Service:
Review Completed by: Comments:
TA Approved: Yes Denied Date:

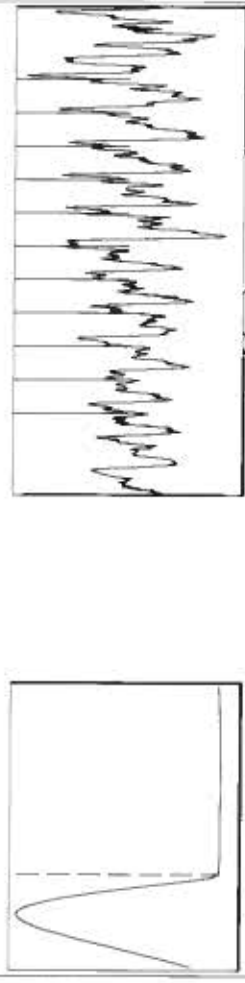
Mail to the Appropriate KCC Conservation Office:

Table with 2 columns: Office Address, Phone. Rows for District Office #1, #2, #3, #4.

Group: TAD Well: Wilson Unit 1 (acquired on 08/26/21 08:51:44)



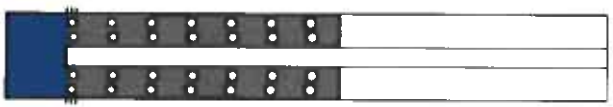
Filter Type: High Pass
 Manual Acoustic Velocity: 910.496 ft/s
 Automatic Collar Count: Yes
 Manual JTS/sec: 14.5773
 Time Joints: 5.256 sec
 Depth: 2482.86 ft



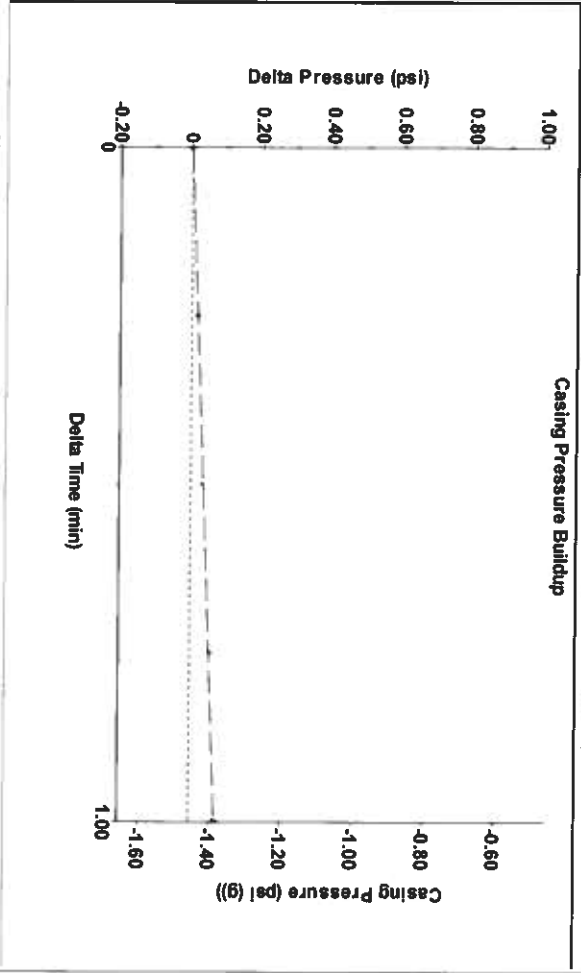
Analysis Method: Automatic

Group: TAD Well: Wilson Unit 1 (acquired on: 08/26/21 08:51:44)

Production	Potential	Casing Pressure	Producing
Oil: -*-	BBL/D: -*-	-1.5 psi (g)	Annular Gas Flow: 2 Mscf/D
Water: -*-	BBL/D: -*-	Casing Pressure Buildup: 0.072 psi	% Liquid: 92 %
Gas: -*-	Mscf/D: -*-	1.00 min	
IPR Method: PBHP/SBHP	Vogel: -*-	Gas/Liquid Interface Pressure: -0.2 psi (g)	
Production Efficiency: 0.0			
Oil: 40 deg API		Liquid Level Depth: 2482.86 ft	
Water: 1.05 Sp Gr H ₂ O		Pump Intake Depth: 5753.00 ft	
Gas: 1.02 Sp Gr AIR		Formation Depth: 5701.00 ft	
Acoustic Velocity: 944.773 ft/s			
Formation Submergence: 3270 ft			
Total Gaseous Liquid Column HT (TVL): 3015 ft			
Equivalent Gas Free Liquid HT (TVL): 3015 ft			
Acoustic Test			

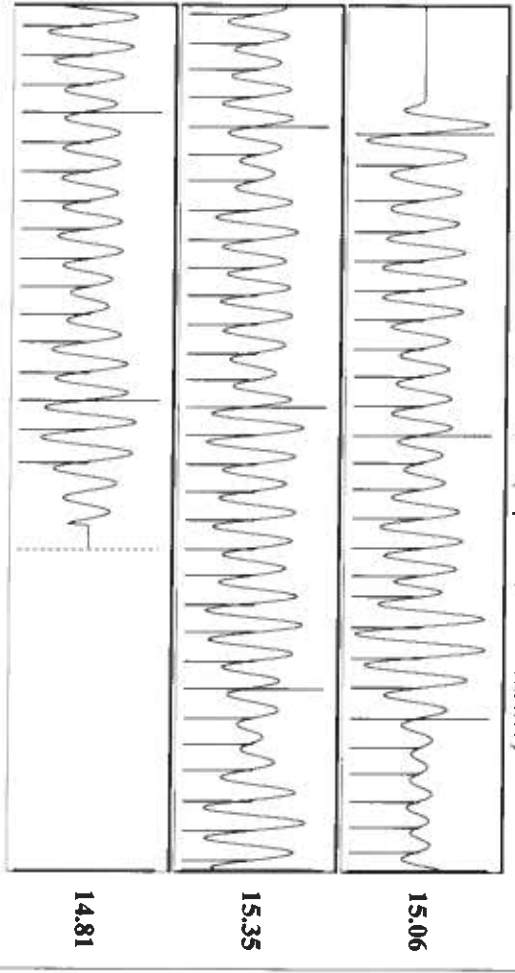


Group: TAD Well: Wilson Unit 1 (acquired on: 08/26/21 08:51:44)



Change in Pressure: 0.07 psi
 Change in Time: 1.00 min
 PT14654 Range
 0 - ? psi

Group: TAD Well: Wilson Unit 1 (acquired on: 08/26/21 08:51:44)



Acoustic Velocity: 944.773 ft/s
 Joints Per Second: 15.1261 ft/sec
 Depth to liquid level: 2482.86 ft
 Automatic Collar Count: Yes

Joints counted: 72
 Joints to liquid level: 12.5773
 Filter Width: 0.296
 Time to 1st Collar: 5.056

September 09, 2021

Katherine McClurkan
Merit Energy Company, LLC
13727 Noel Road, Suite 1200
Dallas, TX 75240-7362

Re: Temporary Abandonment
API 15-187-20469-00-00
Wilson Unit 1
NW/4 Sec.26-29S-39W
Stanton County, Kansas

Dear Katherine McClurkan:

"Your temporary abandonment (TA) application for the well listed above has been approved. In accordance with K.A.R. 82-3-111 the TA status of this well will expire 09/09/2022.

- * If you return this well to service or plug it, please notify the District Office.
- * If you sell this well you are required to file a Transfer of Operator form, T-1.
- * If the well will remain temporarily abandoned, you must submit a new TA application, CP-111, before 09/09/2022.

You may contact me at the number above if you have questions.

Very truly yours,

Michael Maier"