

KANSAS CORPORATION COMMISSION
OIL & GAS CONSERVATION DIVISION

TEMPORARY ABANDONMENT WELL APPLICATION

OPERATOR: License#
Name:
Address 1:
Address 2:
City: State: Zip:
Contact Person:
Phone:
Contact Person Email:
Field Contact Person:
Field Contact Person Phone:

API No. 15-
Spot Description:
Sec. Twp. S. R.
GPS Location: Lat: Long:
Datum: NAD27 NAD83 WGS84
County: Elevation:
Lease Name: Well #:
Well Type: Oil Gas OG WSW Other:
SWD Permit #: ENHR Permit #:
Gas Storage Permit #:
Spud Date: Date Shut-In:

Table with 7 columns: Conductor, Surface, Production, Intermediate, Liner, Tubing. Rows include Size, Setting Depth, Amount of Cement, Top of Cement, Bottom of Cement.

Casing Fluid Level from Surface: How Determined? Date:
Casing Squeeze(s): to w / sacks of cement, to w / sacks of cement. Date:
Do you have a valid Oil & Gas Lease? Yes No
Depth and Type: Junk in Hole at Tools in Hole at Casing Leaks: Yes No Depth of casing leak(s):
Type Completion: ALT. I ALT. II Depth of: DV Tool: w / sacks of cement Port Collar: w / sack of cement
Packer Type: Size: Inch Set at: Feet
Total Depth: Plug Back Depth: Plug Back Method:

Geological Data:

Table with 4 columns: Formation Name, Formation Top, Formation Base, Completion Information. Rows 1 and 2.

UNDER PENALTY OF PERJURY I HEREBY ATTEST THAT THE INFORMATION CONTAINED HEREIN IS TRUE AND CORRECT TO THE BEST OF MY KNOWLEDGE

Submitted Electronically

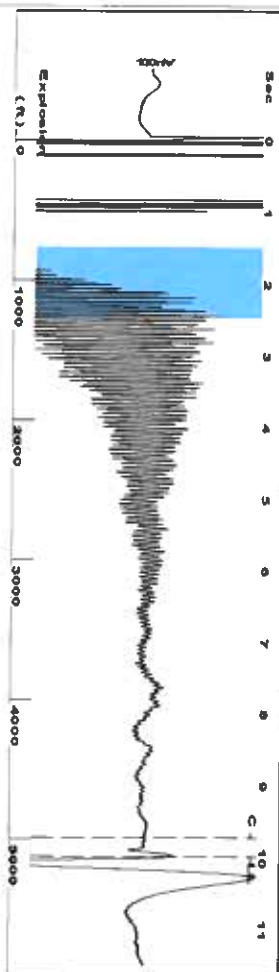
Do NOT Write in This Space - KCC USE ONLY
Date Tested: Results: Date Plugged: Date Repaired: Date Put Back in Service:
Review Completed by: Comments:
TA Approved: Yes Denied Date:

Mail to the Appropriate KCC Conservation Office:

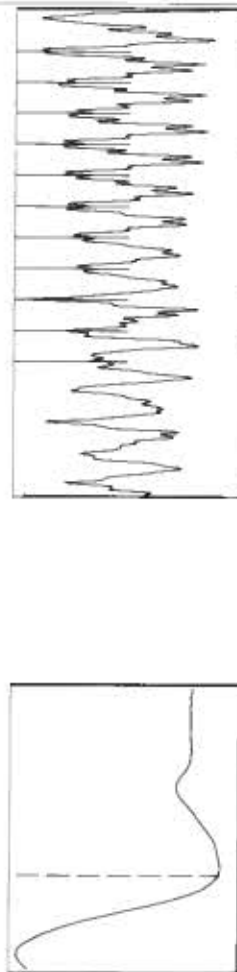
Table with 2 columns: Office Address, Phone. Rows for District Office #1, #2, #3, #4.



Group: LMLU Well: LMLU 601 (acquired on: 08/24/21 10:04:00)



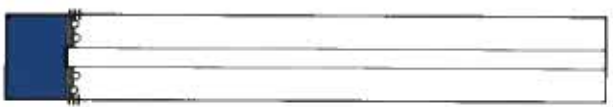
Filter Type: High Pass  
 Manual Acoustic Vel: 1018.24 ft/s  
 Automatic Collar Count: Yes  
 Manual JTS/sec: 15.7233  
 Time Joints: 9.999 sec  
 Depth: 5125.07 ft



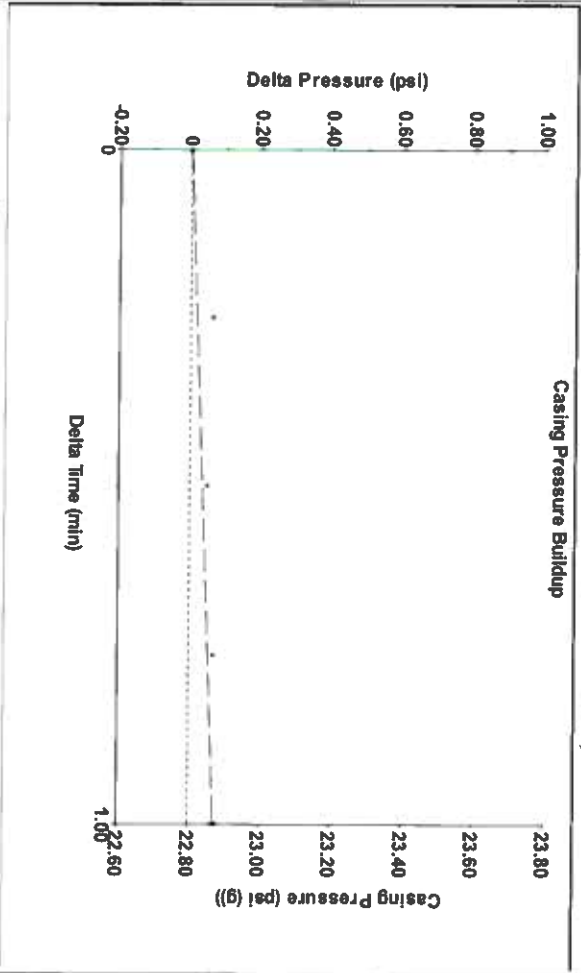
Analysis Method: Automatic

Group: LMLU Well: LMLU 601 (acquired on: 08/24/21 10:04:00)

<b>Production</b>	<b>Potential</b>	<b>Casing Pressure</b>	<b>Producing</b>
Oil - - -	- - - BBL/D	22.8 psi (g)	Annular
Water - - -	- - - BBL/D	Casing Pressure Buildup	Gas Flow
Gas - - -	- - - Mscf/D	0.072 psi	% Liquid
		1.00 min	3 Mscf/D
<b>IPR Method</b>	<b>Vogel</b>	<b>Gas/Liquid Interface Pressure</b>	
PBHP/SBHP	- - -	29.5 psi (g)	
Production Efficiency	0.0		
<b>Oil</b>	40 deg API	<b>Liquid Level Depth</b>	<b>Pump Intake</b>
<b>Water</b>	1.05 Sp.Gr:H2O	5125.07 ft	58.7 psi (g)
<b>Gas</b>	0.96 Sp.Gr:AIR	<b>Pump Intake Depth</b>	Producing BHP
		5212.00 ft	32.7 psi (g)
<b>Acoustic Velocity</b>	1025.12 ft/s	<b>Formation Depth</b>	Static BHP
		5136.00 ft	- - - psi (g)
<b>Formation Submergence</b>			
Total Gaseous Liquid Column HT (TVVD)			
Equivalent Gas Free Liquid HT (TVVD)			
Acoustic Test			

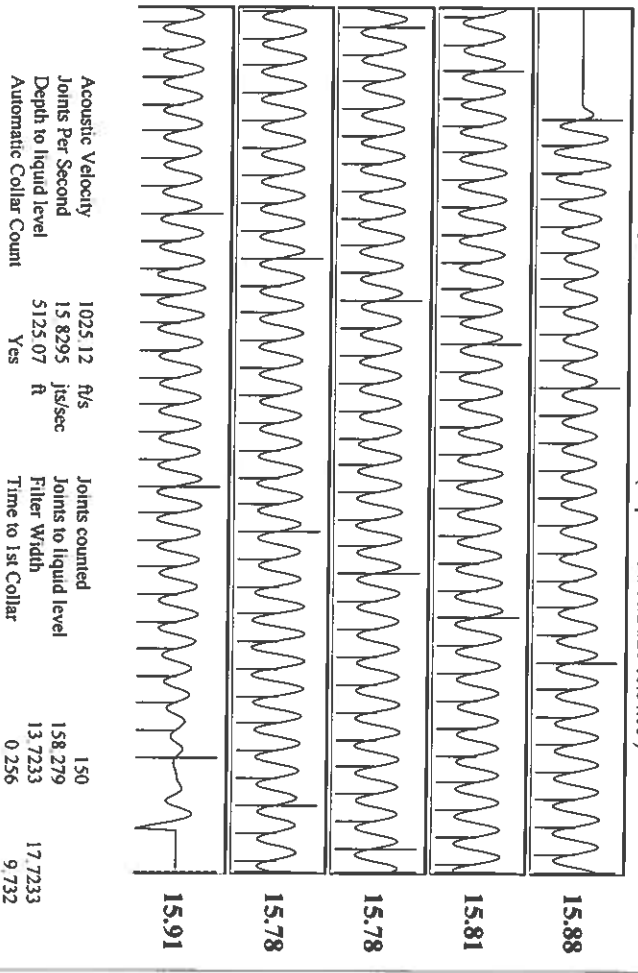


Group: LMLU Well: LMLU 601 (acquired on: 08/24/21 10:04:00)



Change in Pressure: 0.07 psi  
 Change in Time: 1.00 min  
 PT14654 Range  
 0 - ? psi

Group: LMLU Well: LMLU 601 (acquired on: 08/24/21 10:04:00)



Acoustic Velocity: 1025.12 ft/s  
 Joints Per Second: 15.8295 jts/sec  
 Depth to liquid level: 5125.07 ft  
 Automatic Collar Count: Yes

Joints counted: 150  
 Joints to liquid level: 158.279  
 Filter Width: 13.7233  
 Time to 1st Collar: 9.732

September 09, 2021

Katherine McClurkan  
Merit Energy Company, LLC  
13727 Noel Road, Suite 1200  
Dallas, TX 75240

Re: Temporary Abandonment  
API 15-067-21509-00-00  
Ladner Morrow Lime Unit 601  
NE/4 Sec.24-27S-35W  
Grant County, Kansas

Dear Katherine McClurkan:

"Your temporary abandonment (TA) application for the well listed above has been approved. In accordance with K.A.R. 82-3-111 the TA status of this well will expire 09/09/2022.

- \* If you return this well to service or plug it, please notify the District Office.
- \* If you sell this well you are required to file a Transfer of Operator form, T-1.
- \* If the well will remain temporarily abandoned, you must submit a new TA application, CP-111, before 09/09/2022.

You may contact me at the number above if you have questions.

Very truly yours,

Michael Maier"