

KANSAS CORPORATION COMMISSION  
OIL & GAS CONSERVATION DIVISION

TEMPORARY ABANDONMENT WELL APPLICATION

OPERATOR: License# \_\_\_\_\_  
 Name: \_\_\_\_\_  
 Address 1: \_\_\_\_\_  
 Address 2: \_\_\_\_\_  
 City: \_\_\_\_\_ State: \_\_\_\_\_ Zip: \_\_\_\_\_ + \_\_\_\_\_  
 Contact Person: \_\_\_\_\_  
 Phone: ( \_\_\_\_\_ ) \_\_\_\_\_  
 Contact Person Email: \_\_\_\_\_  
 Field Contact Person: \_\_\_\_\_  
 Field Contact Person Phone: ( \_\_\_\_\_ ) \_\_\_\_\_

API No. 15- \_\_\_\_\_  
 Spot Description: \_\_\_\_\_  
 \_\_\_\_\_ - \_\_\_\_\_ - \_\_\_\_\_ - \_\_\_\_\_ Sec. \_\_\_\_\_ Twp. \_\_\_\_\_ S. R. \_\_\_\_\_  E  W  
 \_\_\_\_\_ feet from  N /  S Line of Section  
 \_\_\_\_\_ feet from  E /  W Line of Section  
 GPS Location: Lat: \_\_\_\_\_, Long: \_\_\_\_\_  
(e.g. xx.xxxxx) (e.g. -xxx.xxxxx)  
 Datum:  NAD27  NAD83  WGS84  
 County: \_\_\_\_\_ Elevation: \_\_\_\_\_  GL  KB  
 Lease Name: \_\_\_\_\_ Well #: \_\_\_\_\_  
 Well Type: (check one)  Oil  Gas  OG  WSW  Other: \_\_\_\_\_  
 SWD Permit #: \_\_\_\_\_  ENHR Permit #: \_\_\_\_\_  
 Gas Storage Permit #: \_\_\_\_\_  
 Spud Date: \_\_\_\_\_ Date Shut-In: \_\_\_\_\_

	Conductor	Surface	Production	Intermediate	Liner	Tubing
Size						
Setting Depth						
Amount of Cement						
Top of Cement						
Bottom of Cement						

Casing Fluid Level from Surface: \_\_\_\_\_ How Determined? \_\_\_\_\_ Date: \_\_\_\_\_  
 Casing Squeeze(s): \_\_\_\_\_ to \_\_\_\_\_ w / \_\_\_\_\_ sacks of cement, \_\_\_\_\_ to \_\_\_\_\_ w / \_\_\_\_\_ sacks of cement. Date: \_\_\_\_\_  
(top) (bottom) (top) (bottom)  
 Do you have a valid Oil & Gas Lease?  Yes  No  
 Depth and Type:  Junk in Hole at \_\_\_\_\_  Tools in Hole at \_\_\_\_\_ Casing Leaks:  Yes  No Depth of casing leak(s): \_\_\_\_\_  
(depth) (depth)  
 Type Completion:  ALT. I  ALT. II Depth of:  DV Tool: \_\_\_\_\_ w / \_\_\_\_\_ sacks of cement  Port Collar: \_\_\_\_\_ w / \_\_\_\_\_ sack of cement  
(depth) (depth)  
 Packer Type: \_\_\_\_\_ Size: \_\_\_\_\_ Inch Set at: \_\_\_\_\_ Feet  
 Total Depth: \_\_\_\_\_ Plug Back Depth: \_\_\_\_\_ Plug Back Method: \_\_\_\_\_

**Geological Data:**

Formation Name	Formation Top	Formation Base	Completion Information
1. _____	At: _____	to _____ Feet	Perforation Interval _____ to _____ Feet or Open Hole Interval _____ to _____ Feet
2. _____	At: _____	to _____ Feet	Perforation Interval _____ to _____ Feet or Open Hole Interval _____ to _____ Feet

UNDER PENALTY OF PERJURY I HEREBY ATTEST THAT THE INFORMATION CONTAINED HEREIN IS TRUE AND CORRECT TO THE BEST OF MY KNOWLEDGE

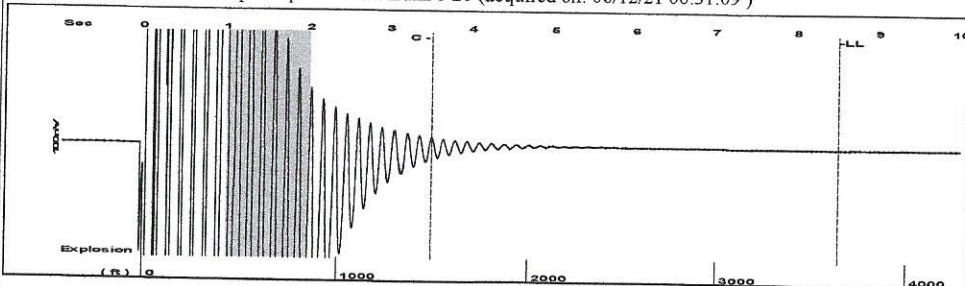
Submitted Electronically

<b>Do NOT Write in This Space - KCC USE ONLY</b>	Date Tested: _____	Results: _____	Date Plugged: _____	Date Repaired: _____	Date Put Back in Service: _____
	Review Completed by: _____ Comments: _____				
TA Approved: <input type="checkbox"/> Yes <input type="checkbox"/> Denied Date: _____					

Mail to the Appropriate KCC Conservation Office:

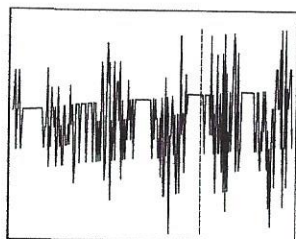
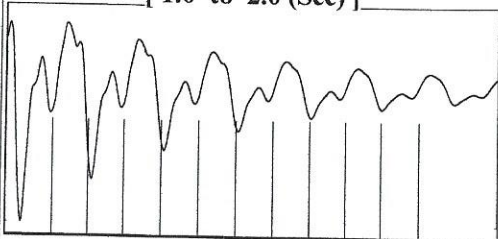
	KCC District Office #1 - 210 E. Frontview, Suite A, Dodge City, KS 67801	Phone 620.682.7933
	KCC District Office #2 - 3450 N. Rock Road, Building 600, Suite 601, Wichita, KS 67226	Phone 316.337.7400
	KCC District Office #3 - 137 E. 21st St., Chanute, KS 66720	Phone 620.902.6450
	KCC District Office #4 - 2301 E. 13th Street, Hays, KS 67601-2651	Phone 785.261.6250

Group: Belpre Well: Lunz 1-20 (acquired on: 08/12/21 06:31:09)



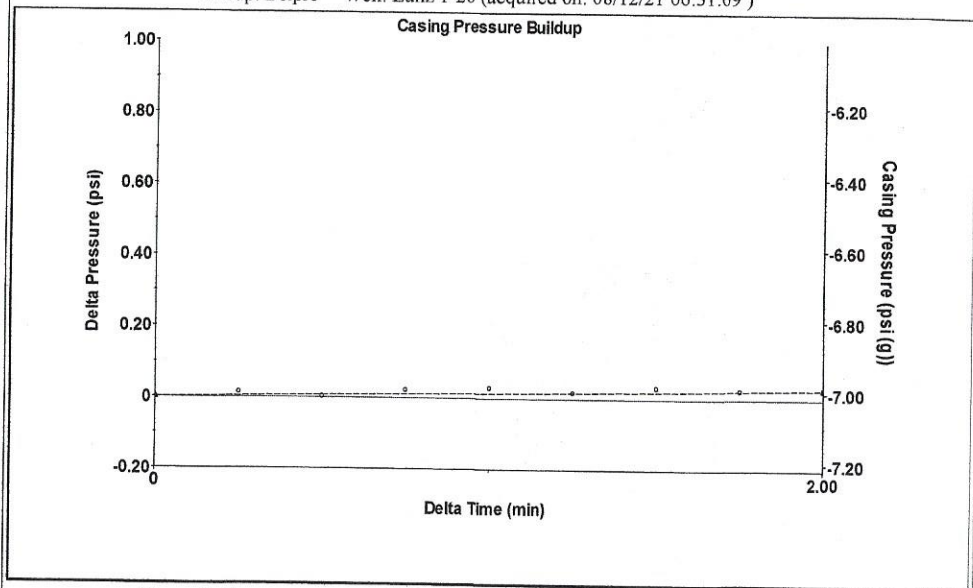
Filter Type High Pass Automatic Collar Count Yes Time 8.5 sec  
 Manual Acoustic Velo 846.154 ft/s Manual JTS/sec 13.4953 Joints 116.149 Jts  
 Depth 3641.27 ft

[ 1.0 to 2.0 (Sec) ]



Analysis Method: Automatic

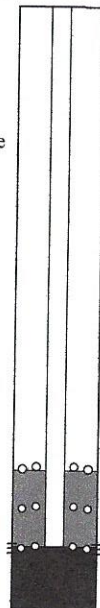
Group: Belpre Well: Lunz 1-20 (acquired on: 08/12/21 06:31:09)



Change in Pressure 0.03 psi PT13440  
 Range 0 - ? psi  
 Change in Time 2.00 min

Group: Belpre Well: Lunz 1-20 (acquired on: 08/12/21 06:31:09)

Production	Potential	Casing Pressure
Oil -*- BBL/D	-* - BBL/D	-7.0 psi (g)
Water -*- BBL/D	-* - BBL/D	Casing Pressure Buildup
Gas -*- Mscf/D	-* - Mscf/D	0.0 psi
		2.00 min
IPR Method Vogel	Gas/Liquid Interface Pressure	
PBHP/SBHP -*-	-5.9 psi (g)	
Production Efficiency 0.0		
Oil 40 deg.API	Liquid Level Depth	
Water 1.05 Sp.Gr.H2O	3641.27 ft	
Gas 1.12 Sp.Gr.AIR	Pump Intake Depth	
	4327.00 ft	
Acoustic Velocity 856.77 ft/s	Formation Depth	
	4342.00 ft	

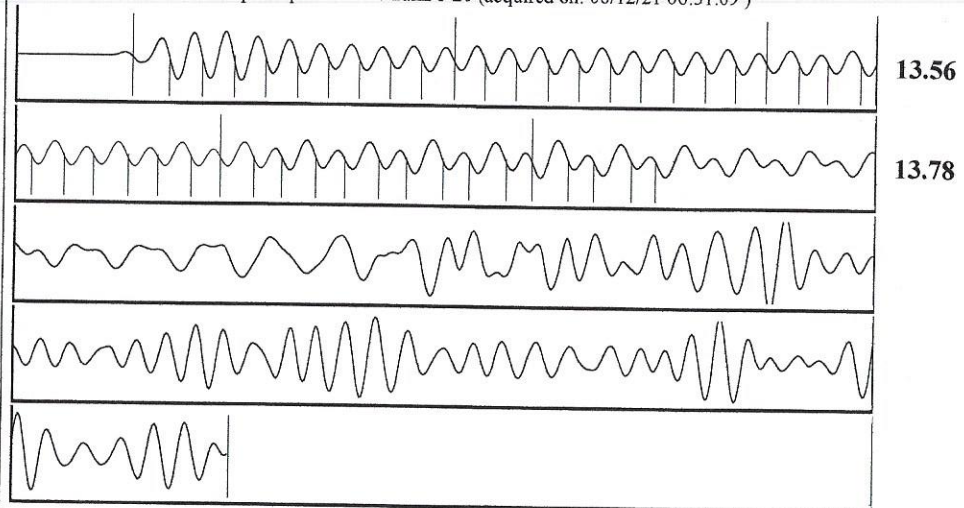


Producing	
Annular Gas Flow	0 Mscf/D
% Liquid	100 %
Pump Intake	228.7 psi (g)
Producing BHP	235.5 psi (g)
Static BHP	-* - psi (g)

Formation Submergence  
 Total Gaseous Liquid Column HT (TVD) 686 ft  
 Equivalent Gas Free Liquid HT (TVD) 686 ft

Acoustic Test

Group: Belpre Well: Lunz 1-20 (acquired on: 08/12/21 06:31:09)



Acoustic Velocity	856.77 ft/s	Joints counted	44
Joints Per Second	13.6646 jts/sec	Joints to liquid level	116.149
Depth to liquid level	3641.27 ft	Filter Width	11.4953 15.4953
Automatic Collar Count	Yes	Time to 1st Collar	0.268 3.488

September 09, 2021

Loveness Mpanje  
F. G. Holl Company L.L.C.  
9431 E CENTRAL STE 100  
WICHITA, KS 67206-2563

Re: Temporary Abandonment  
API 15-047-20533-00-00  
LUNZ 1-20  
SE/4 Sec.20-24S-16W  
Edwards County, Kansas

Dear Loveness Mpanje:

"Your temporary abandonment (TA) application for the well listed above has been approved. In accordance with K.A.R. 82-3-111 the TA status of this well will expire 04/17/2022.

- \* If you return this well to service or plug it, please notify the District Office.
- \* If you sell this well you are required to file a Transfer of Operator form, T-1.
- \* If the well will remain temporarily abandoned, you must submit a new TA application, CP-111, before 04/17/2022.

You may contact me at the number above if you have questions.

Very truly yours,

Michael Maier"